

Firmware Update

Two methods are available for updating firmware:

- Ethernet port with Download Tool
- USB printer port with Download Tool

Enabling Software Upgrades/ Download

Verify that Software Upgrades/ Download is Enabled (using the Control Panel and/or CWIS).

Notes:

- For updating firmware using the Ethernet port, Software Upgrades/ Download must be Enabled on both the Control Panel and in CWIS.
- For updating firmware using the USB printer port, only Software Download must be Enabled on the Control Panel.

Using the Control Panel

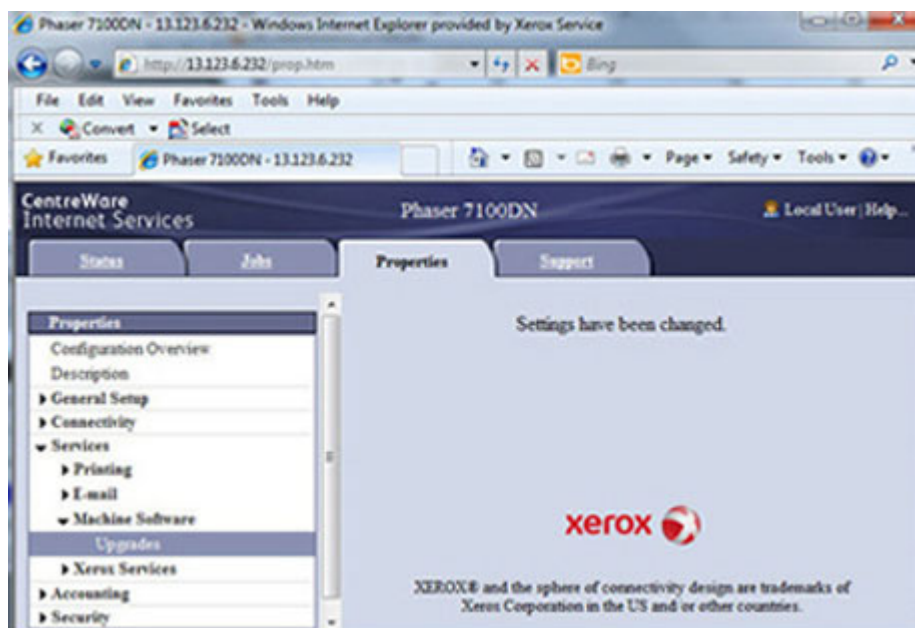
1. From the Control Panel menu, press the **Menu** button.
2. Navigate to [Admin Menu](#), and press the **OK** button.
3. Navigate to [System Settings](#), and press the **OK** button.
4. Navigate to [Software Download](#), and press the **OK** button.
5. Navigate to [Enabled](#), and press the **OK** button.
6. Verify that a “[dot](#)” is displayed in front of Enabled.

Using CWIS

1. Open a web browser.
2. Enter the printer's IP address.
3. From the top menu, click **Properties**.
4. On the left side, expand **Services** > **Machine Software** > **Upgrades**.
5. Under **Upgrades** window, select **Enabled** (if not selected)
6. Click **Apply**.



7. Verify that the settings have been changed.

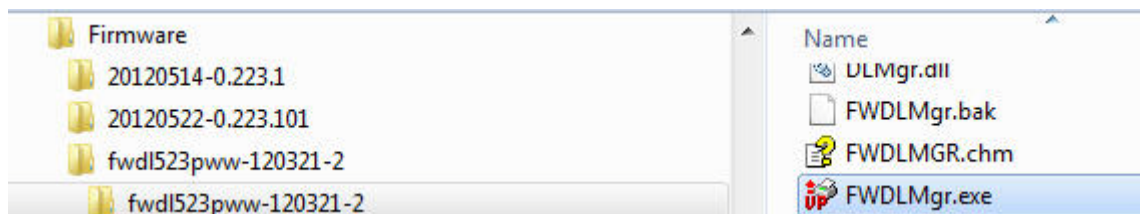


Ethernet Port with Download Tool

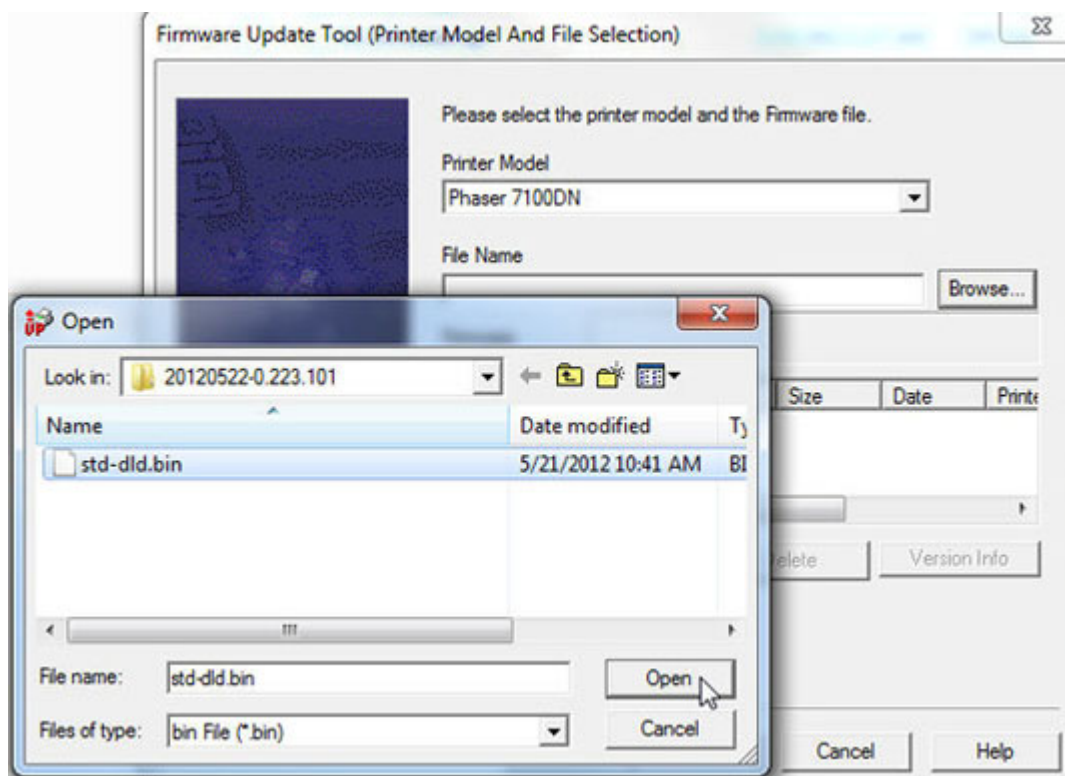
Note: Be sure to download the appropriate firmware file and Download tool from the Xerox support web site.

Note: Software Upgrades/ Download must be set to **Enabled** on the Control Panel and in CWIS in order to perform firmware update (refer to [Enabling Software Upgrades/ Download](#) on page 6-13).

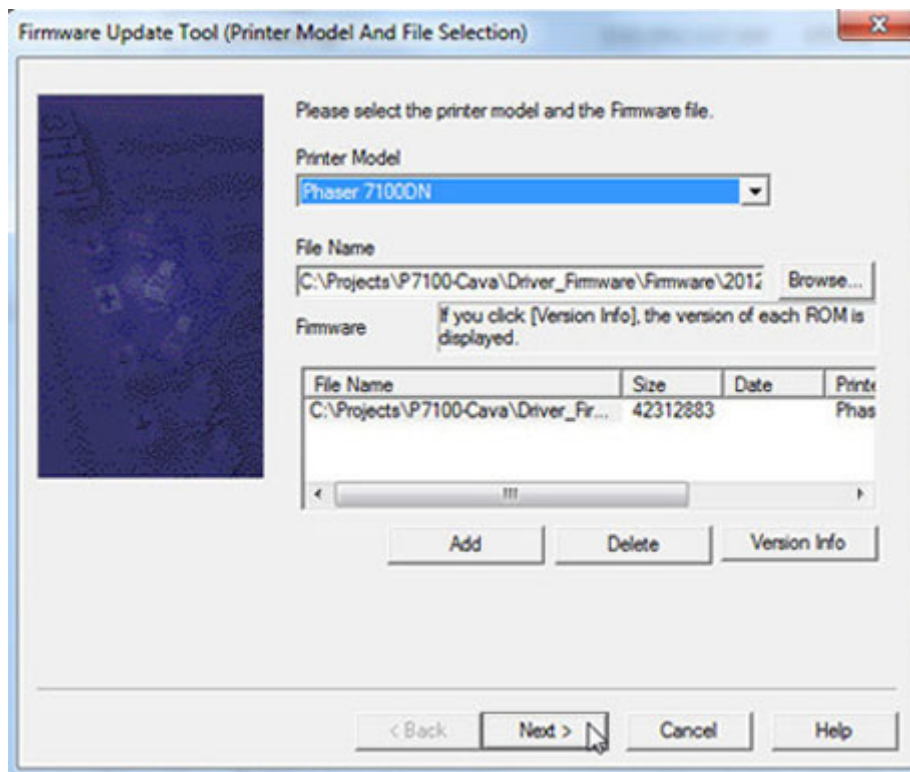
1. Locate the Download Tool application on the computer.
2. Double-click the **FWDLMgr.exe** file.



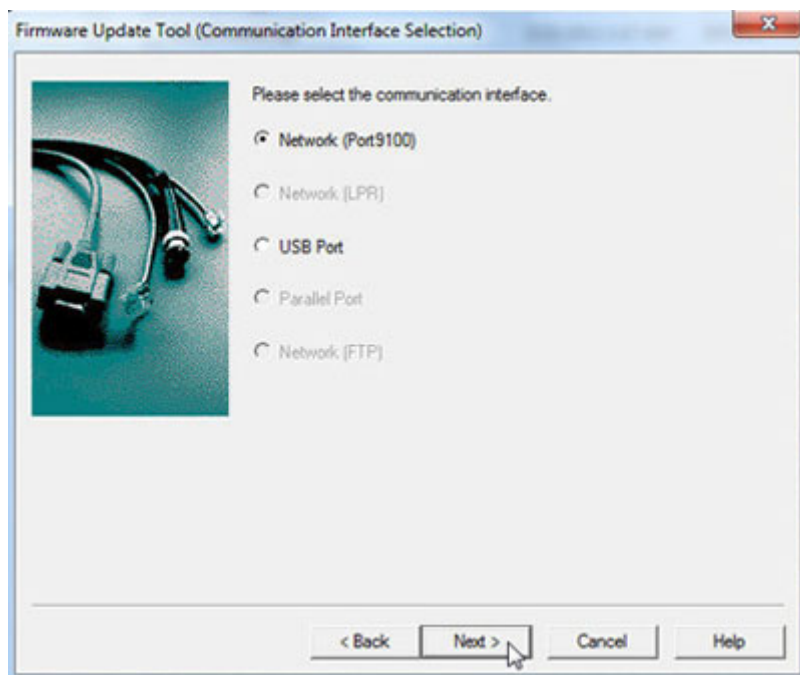
3. Click the **Agree** button.
4. The **Firmware Update Tool (Printer Model And File Selection)** window appears.
5. From the **Printer Model** list, select **Phaser 7100N** or **Phaser 7100DN**.
6. Click the **Browse** button and navigate the folders to locate the **std-dld.bin** file.
7. Select the **std-dld.bin** file.
8. Click the **Open** button.



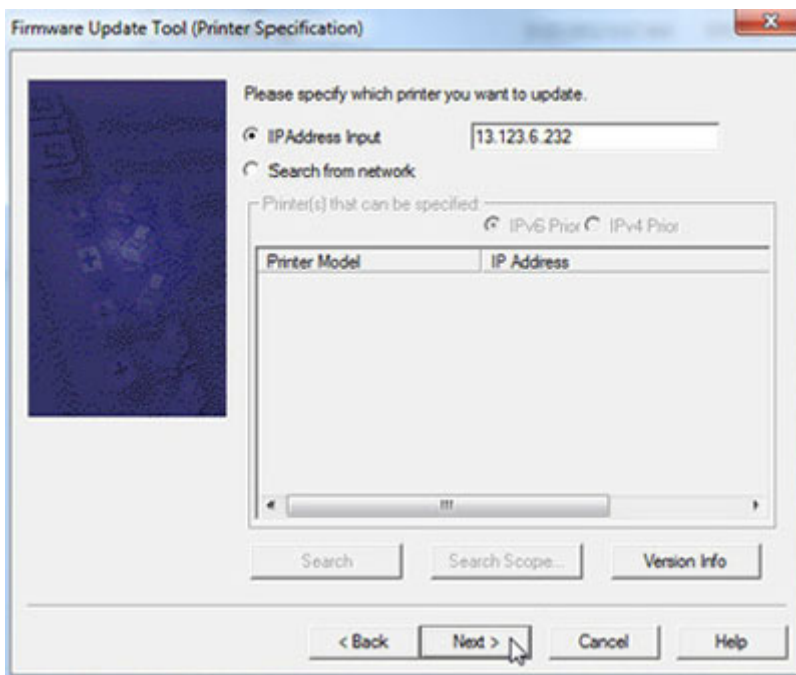
9. Click the **Add** button to add the file.
10. Click the **Next** button to continue.



11. Select **Network (Port9100)**.
12. Click the **Next** button to continue.



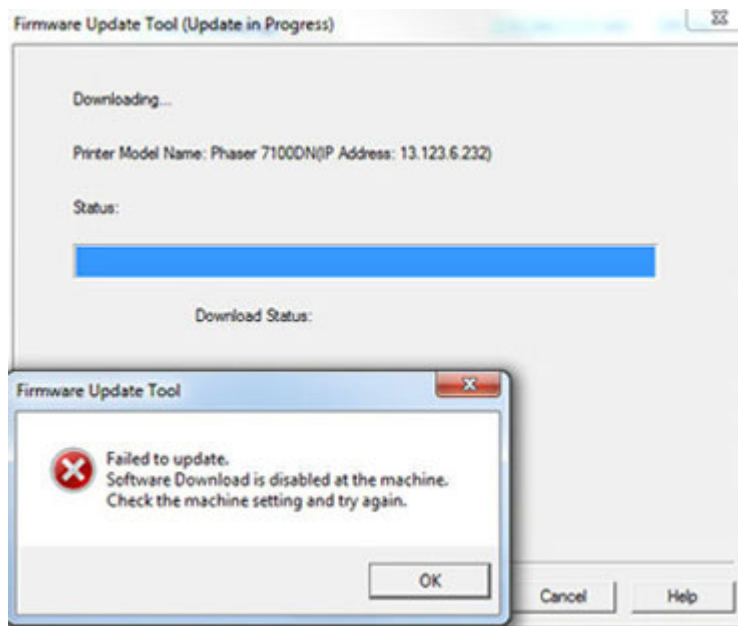
13. In the **IPAddress Input** field, enter the printer's IP address.
14. Click the **Next** button to continue.



15. The **Firmware Update Tool (Update in Progress)** window appears showing firmware download status.

Note: If a **Failed to update** message appears, Software Upgrades/ Download is not enabled (in CWIS and/or Control Panel), refer to [Enabling Software Upgrades/ Download](#) on page 6-13 to enable Software Upgrade. Click **OK**, **Finish**, and **Yes** to close the windows.

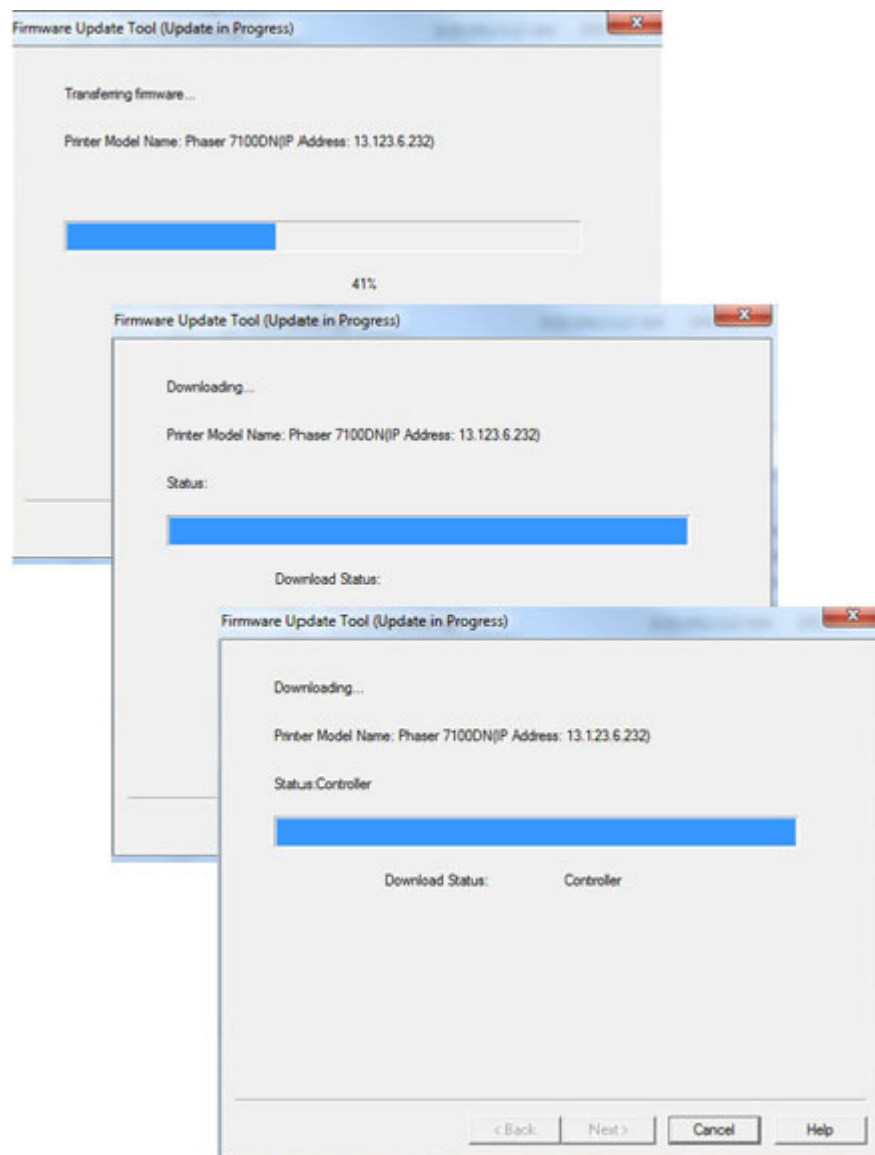
Firmware Update Failed Message



Control Panel Message

- Processing data...
- Completed with error 016-741 (Software Upgrade Enabled on CWIS, and Disabled on the Control Panel)
- Completed with error 017-755 (Software Upgrade Disabled on CWIS, and Enabled on the Control Panel)

Firmware Update Progress

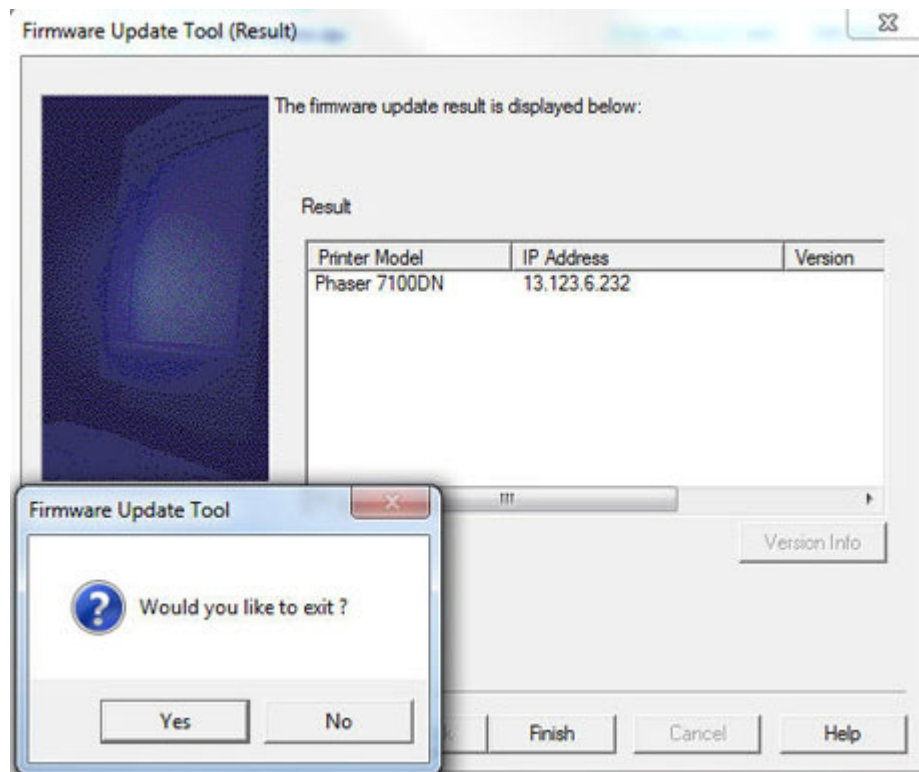


16. On the Control Panel, a [Download Mode](#) message appears.

Note: The firmware update process takes approximately 6 minutes to complete.

17. The printer reboots.
18. On the Control Panel, various messages appear [Xerox \(R\)](#) --> [Initializing Postscript](#) --> [Xerox \(R\) Toner Cartridge](#) --> [Ready to Print](#) until the process is completed.

19. On the computer, click **Finish** to continue.
20. Click **Yes** to close the window.



21. Print a Configuration page and verify the firmware version information.

USB Port with Download Tool

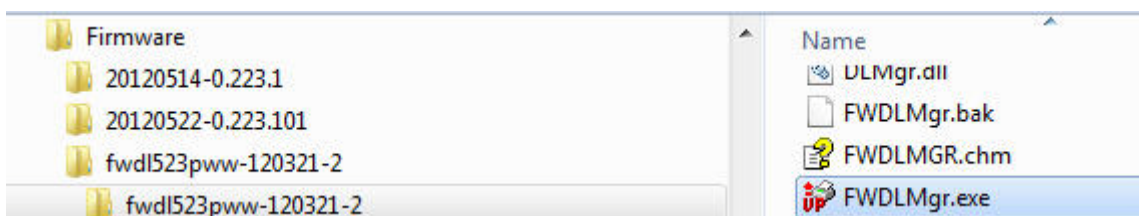
Note: Be sure to download the appropriate firmware file and Download tool from the Xerox support web site.

Note: Software Download must be set to **Enabled** on the Control Panel in order to perform firmware update (refer to [Enabling Software Upgrades/ Download](#) on page 6-13).

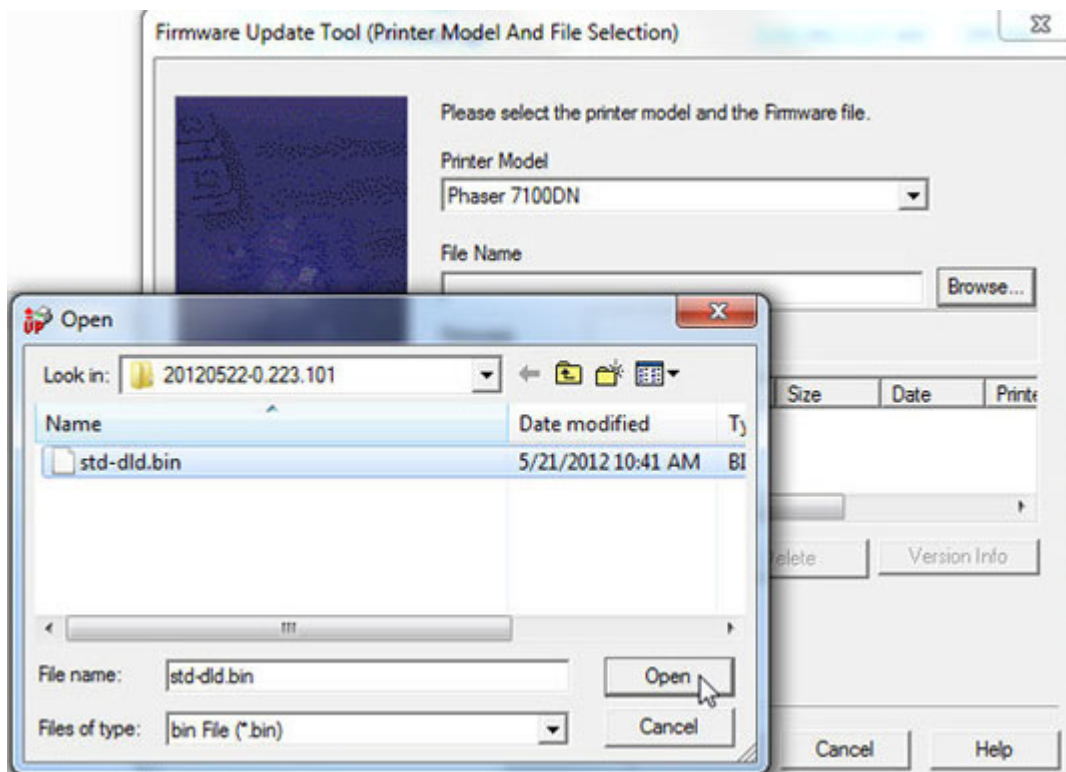
1. Connect the USB cable from the computer to the USB port on the printer.



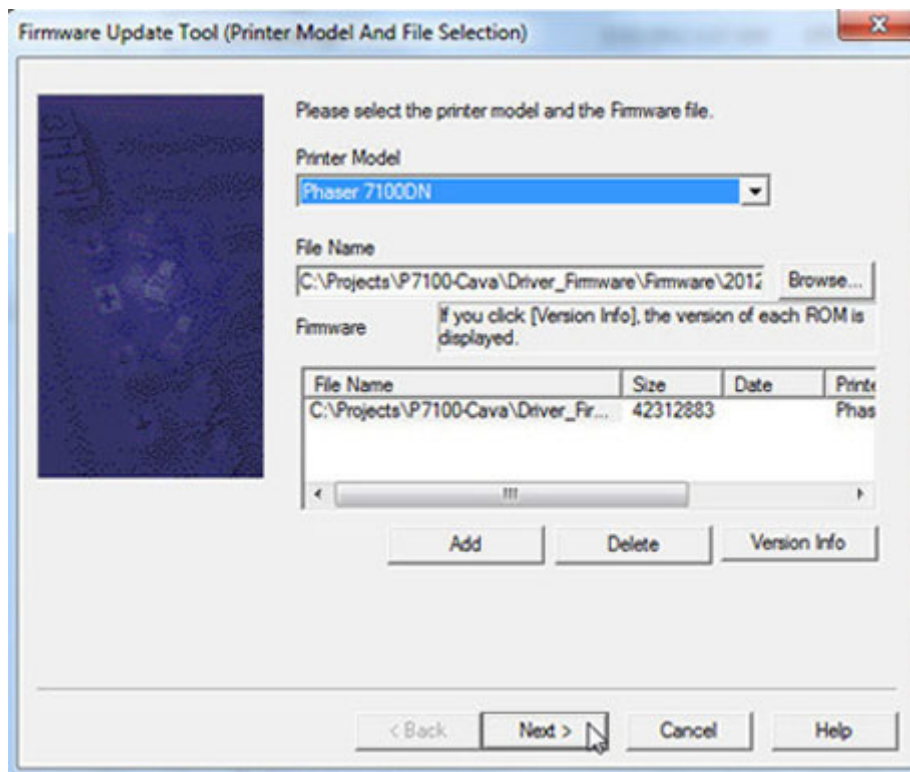
2. Locate the Download Tool application on the computer.
3. Double-click the **FWDLMgr.exe** file.



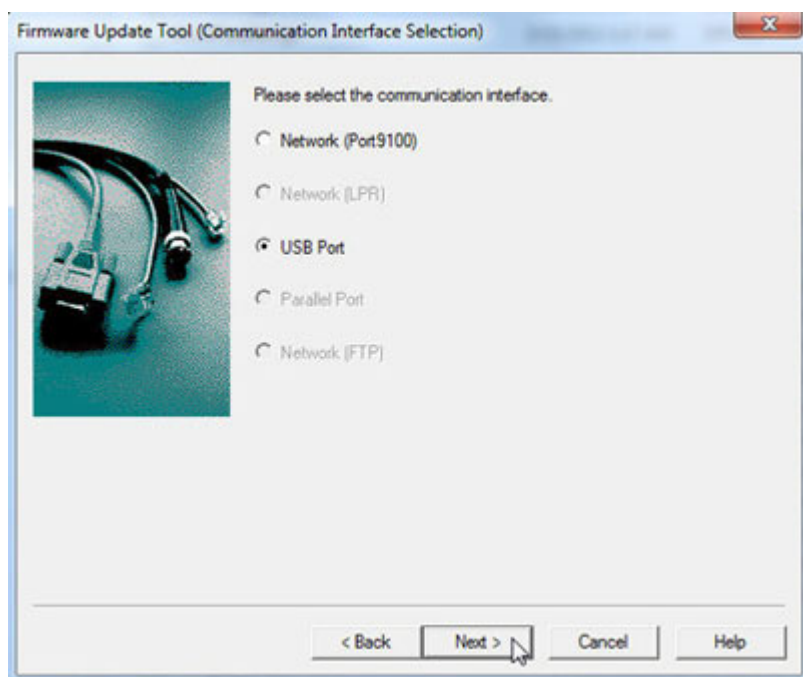
4. Click the **Agree** button.
5. The **Firmware Update Tool (Printer Model And File Selection)** window appears.
6. From the **Printer Model** list, select **Phaser 7100N** or **Phaser 7100DN**.
7. Click the **Browse** button and navigate to locate the **std-dld.bin** file.
8. Select the **std-dld.bin** file.
9. Click the **Open** button.



10. Click the **Add** button to add the file.
11. Click the **Next** button to continue.



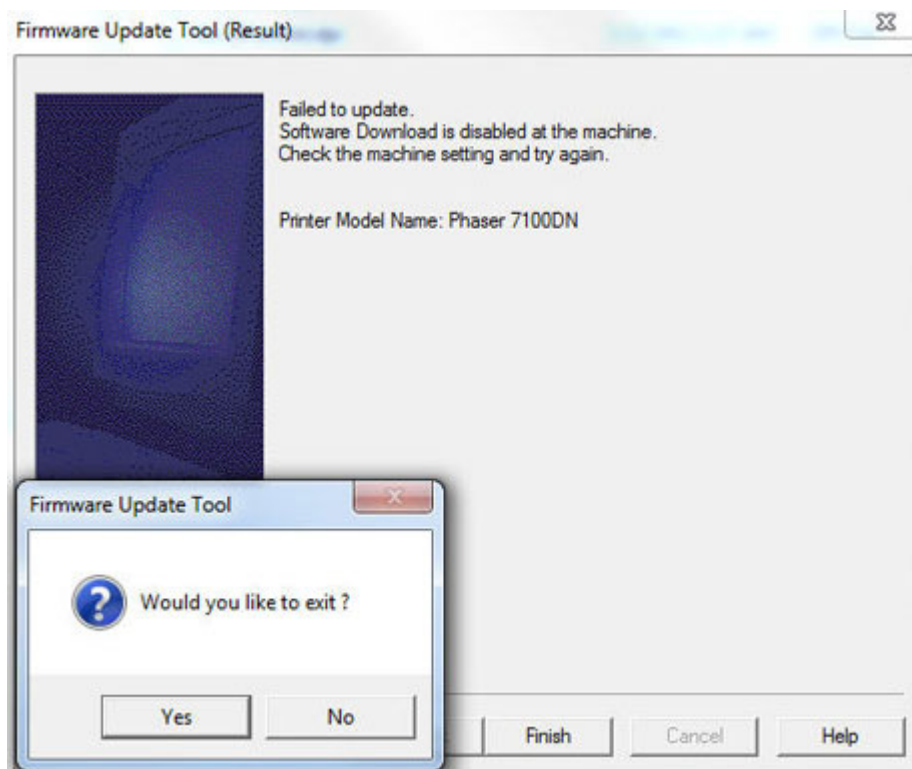
12. Select **USB Port**.
13. Click the **Next** button to continue.



14. The [Firmware Update Tool \(Update in Progress\)](#) window appears showing firmware download status.

Note: If a [Failed to update](#) message appears, Software Download is not enabled (on the Control Panel), refer to [Enabling Software Upgrades/ Download](#) on page 6-13 to enable Software Download. Click **Finish** and **Yes** to close the windows.

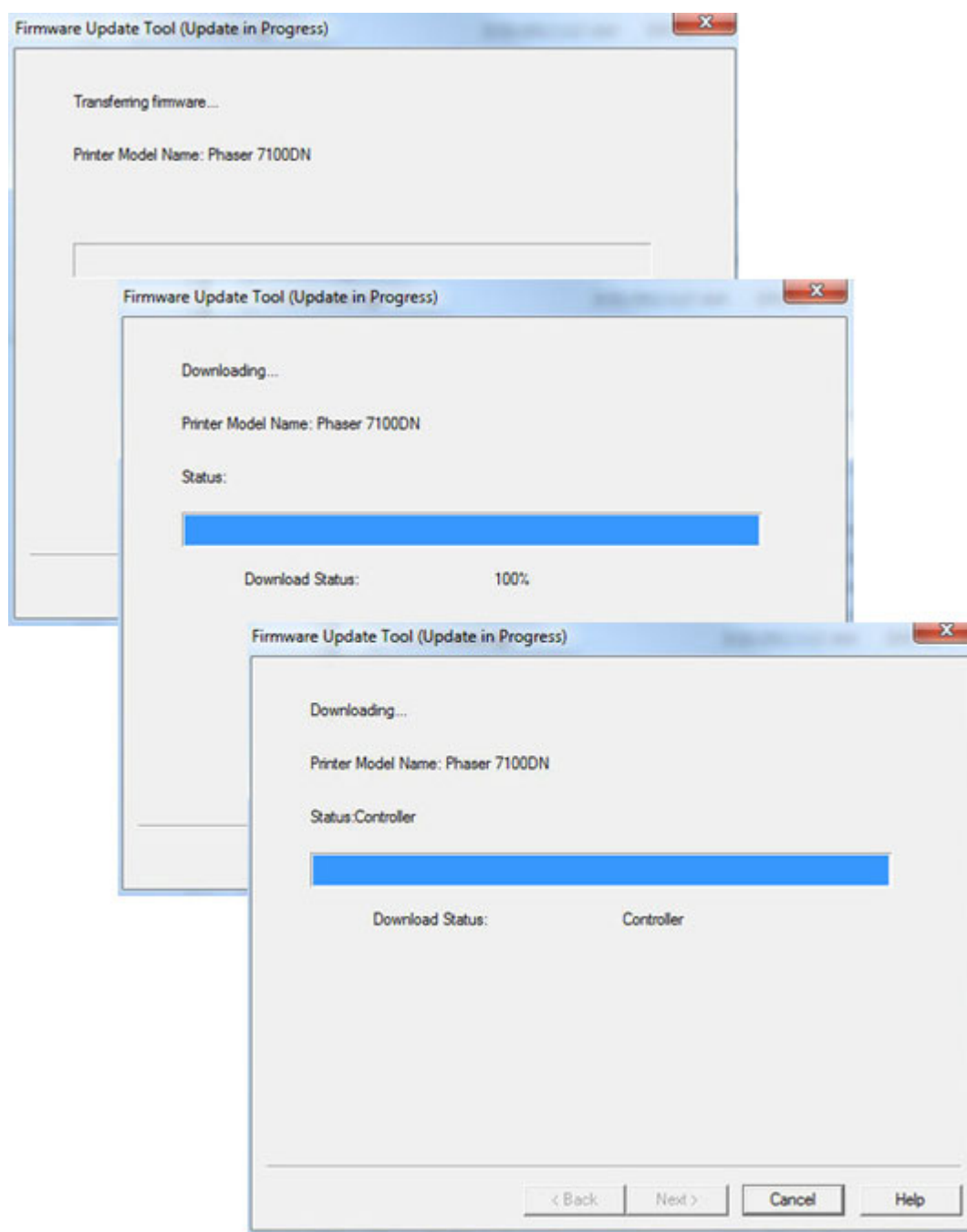
Firmware Update Failed Message



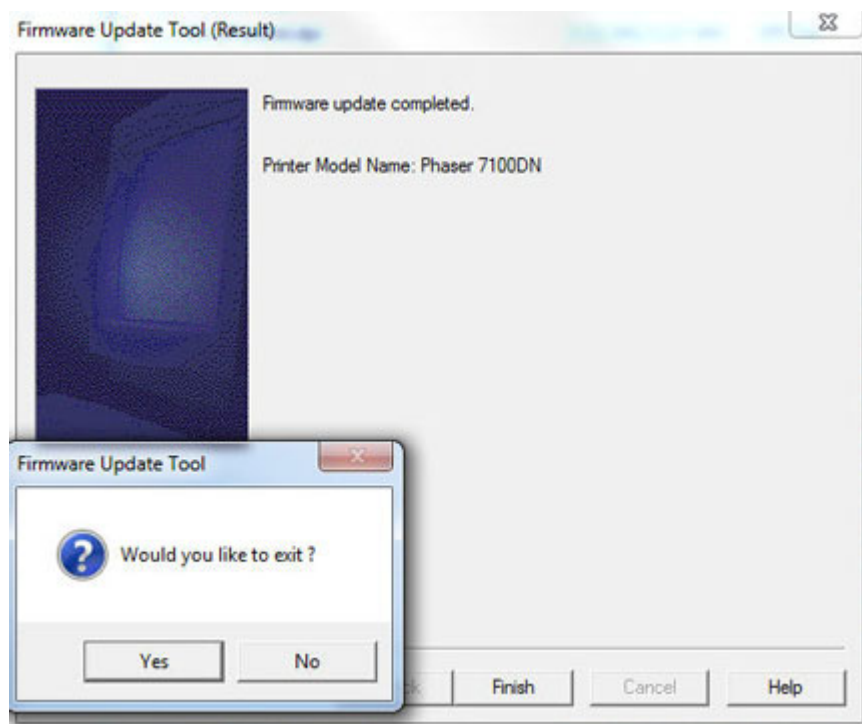
Control Panel Message

- Processing data...
- Completed with error 016-741 (Software Upgrade Enabled on CWIS, and Disabled on the Control Panel)

Firmware Update Progress



15. On the Control Panel, a [Download Mode](#) message appears.
Note: The firmware update process takes approximately 6 minutes to complete.
16. The printer reboots.
17. On the Control Panel, various messages appear [Xerox \(R\)](#) --> [Initializing Postscript](#) --> [Xerox \(R\) Toner Cartridge](#) --> [Ready to Print](#) until the process is completed.
18. Click **Finish** to continue.
19. Click **Yes** to close the window.



20. Print a Configuration page and verify the firmware version information.

