

Customer Release Notes

Phaser 6500

Firmware Release PL9



Release Date: December 2014

Software Release Details

Component	Version
Controller	201411101220
Network	95.47
PCL5	201303121104
PCL6	201303121104
PS	201103101130
HBPL	201004211313
PS	201306131043

Purpose

This firmware release contains the following enhancement:

- Changed the default Power Save Time setting from 30 minutes to 18 minutes (requires NVRAM reset for new default value to take effect)

This firmware release also includes the fixes from all previous firmware versions

The Firmware Release is located at:

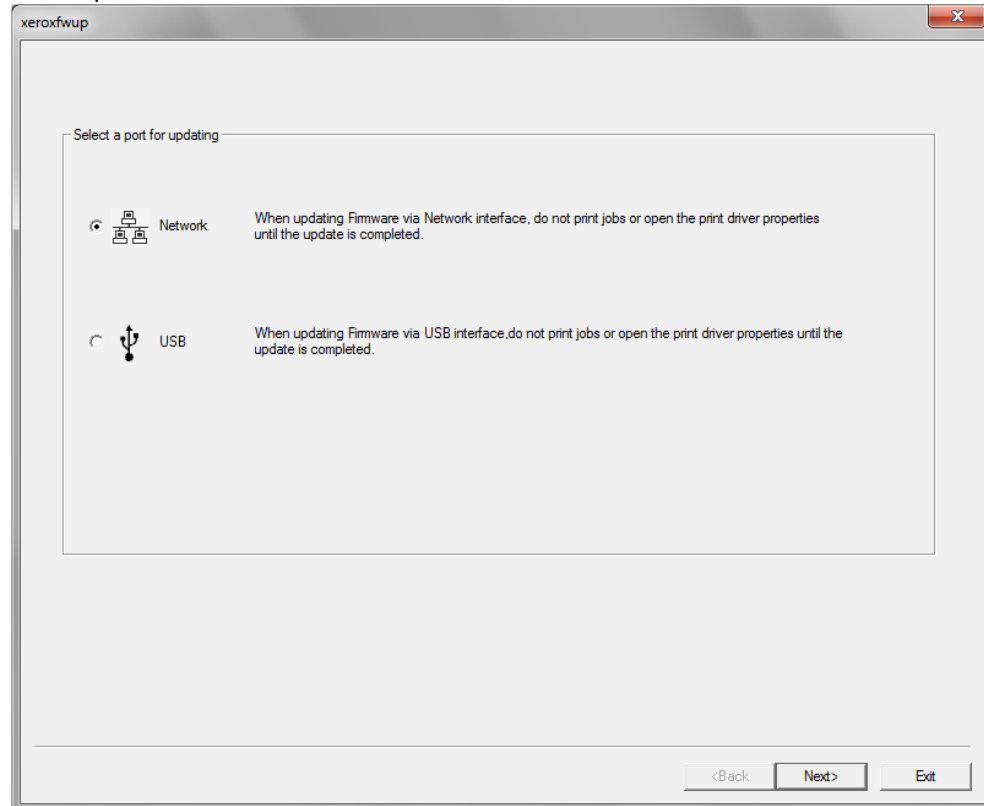
[Phaser 6500](#)

Firmware Upgrade Process

Windows Operating Systems

Caution: Do Not Reboot or Turn Off the printer during the firmware update process. The printer will automatically reboot when finished downloading the firmware.

1. Make sure the printer is powered on and connected over network or USB.
2. On the printer, print a Configuration Page or Printer Settings Report to document the current printer settings.
3. On the computer, double-click on the **xeroxfwup.exe** icon located in the firmware folder.
4. The **xeroxfwup** window with the connection options is displayed. Two connections are available for updating the firmware, Network and USB. When updating devices that only have USB connections, only the USB connection option will be displayed. Select your connection and press **Next**



- **For Network connection:**

- If your printer IP address is listed, check the checkbox next to your printer. Click the **Next** button.

xeroxfwup

Please select printers to update.
Update data will be sent to the printer when you click Next.

Module Name:Printer F/W(201104251224)

IPv6 Address	IPv4 Address	Printer Name	Printer F/W	Status
<input checked="" type="checkbox"/> -	13.123.12.184	Xerox WorkCentre 6505...	201104251224	Completed
<input type="checkbox"/> -	13.123.12.74	Xerox WorkCentre 6505...	201011091526	Not complete

Refresh

Add

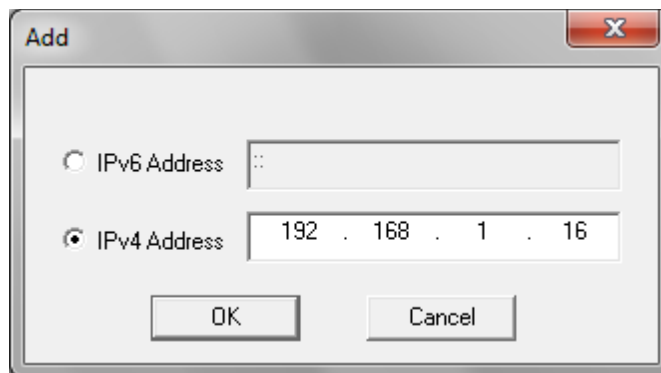
Community

<Back

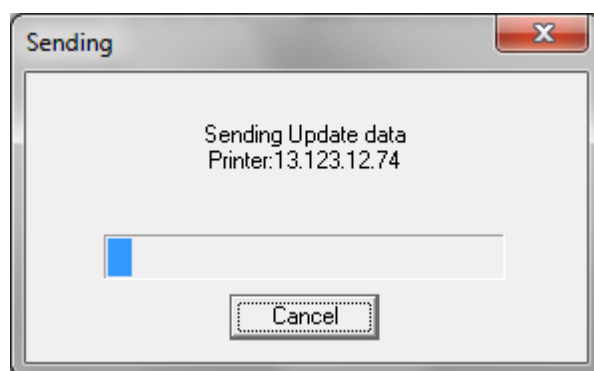
Next>

Exit

- If your printer IP address is not listed, click the **Add** button.
- Enter your printer IP address and click the **OK** button.



- Check the checkbox next to your printer IP address and click the **Next** button to send the firmware to your printer.



- The following messages will be displayed on your printer. These messages may vary slightly depending on the printer model, and whether you are upgrading the controller or engine firmware.

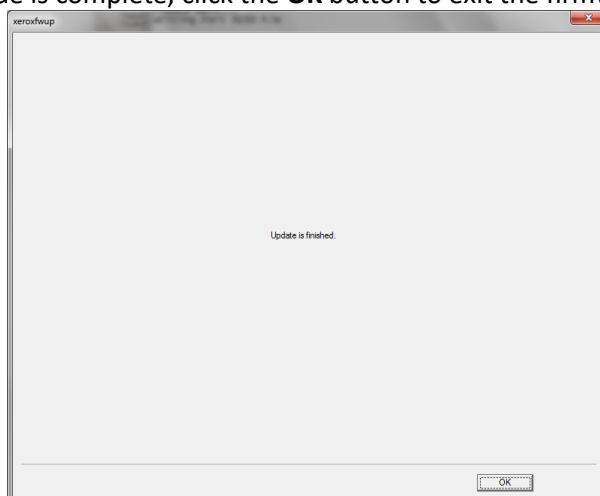
Receiving Data

Port 9100

Please Wait...

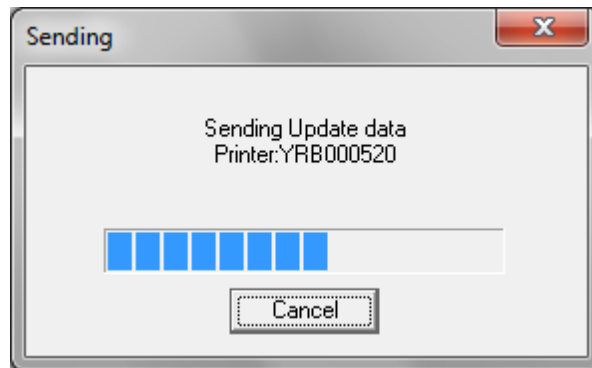
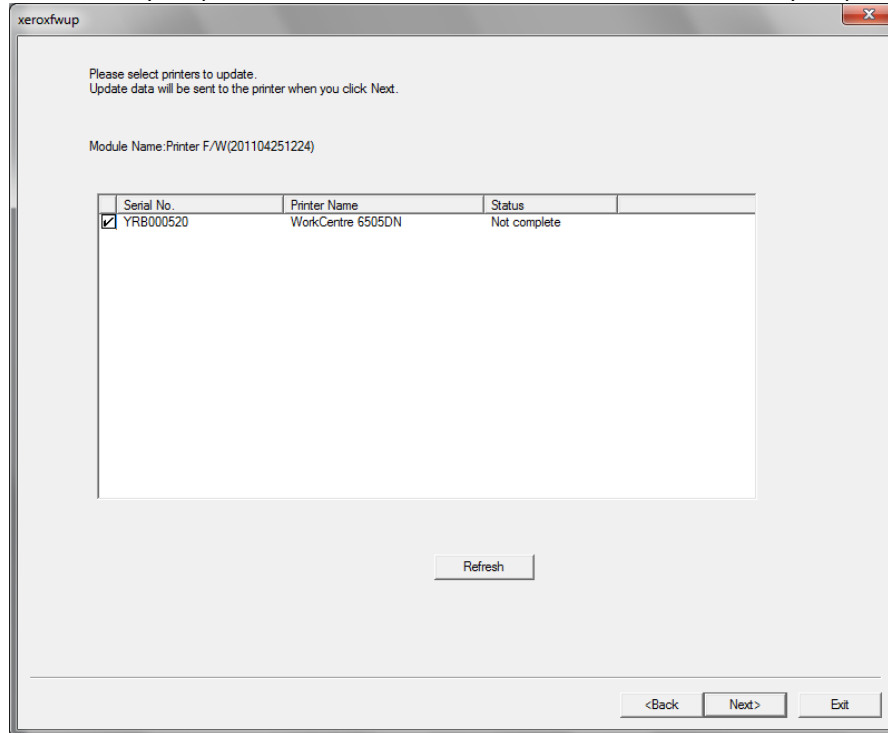
Writing Port 9100 F/W

- The printer will reboot after the firmware is updated. Print a Configuration Page or Printer Settings Report to verify the updated firmware version.
- After the firmware upgrade is complete, click the **OK** button to exit the firmware upgrade tool.



- **For USB connection:**

- Check the checkbox next to your printer. Click the **Next** button to send the firmware to your printer.



- The following messages will be displayed on your printer. These messages may vary slightly depending on the printer model, and whether you are upgrading the controller or engine firmware.
 - Receiving Data
 - USB
 - Please Wait...
 - Writing USB F/W
- The printer will reboot after the firmware is updated. Print a Configuration Page or Printer Settings Report to verify the updated firmware version.
- After the firmware upgrade is complete, click the **OK** button to exit the firmware upgrade tool.

