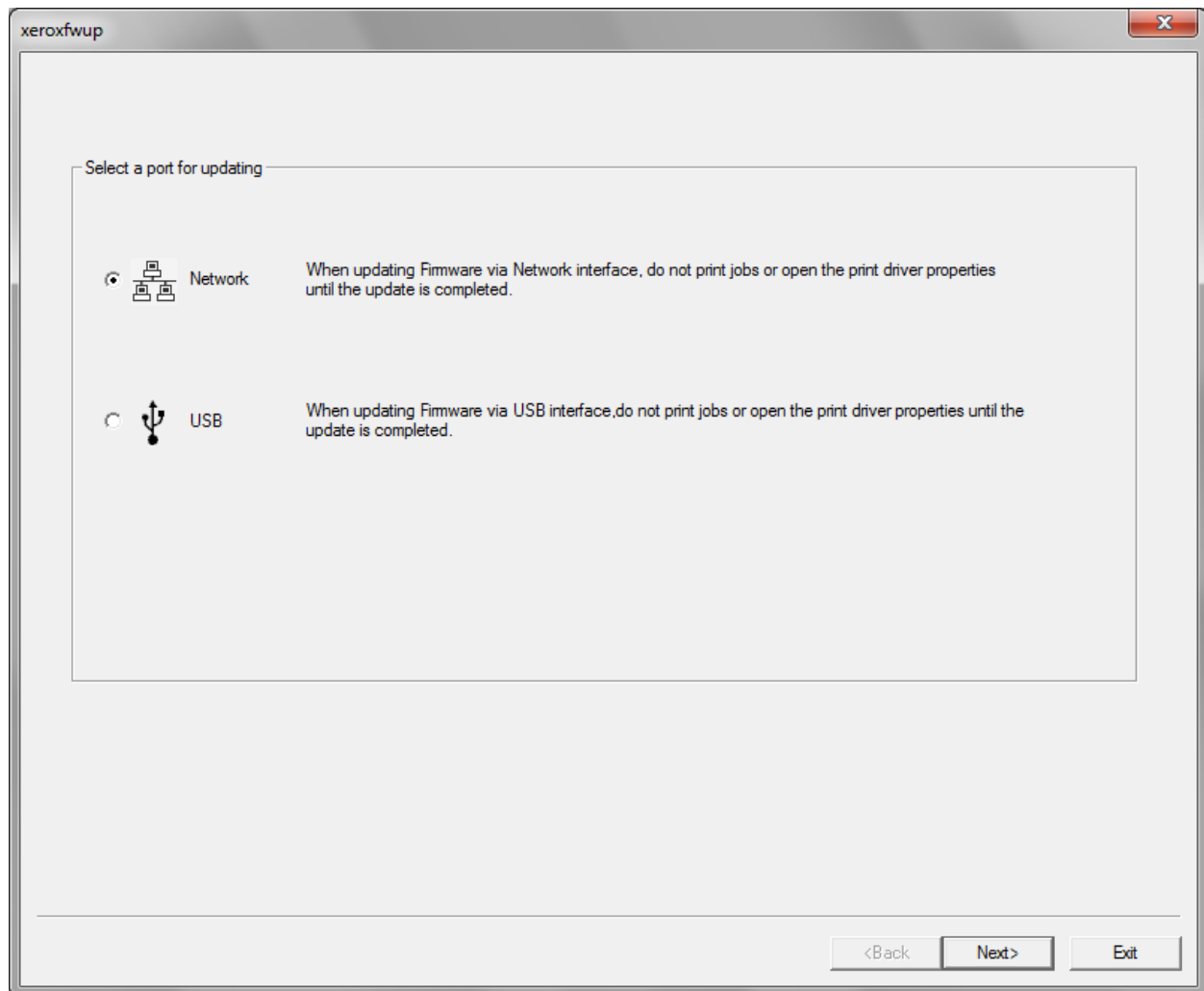




Windows Firmware Update Instructions

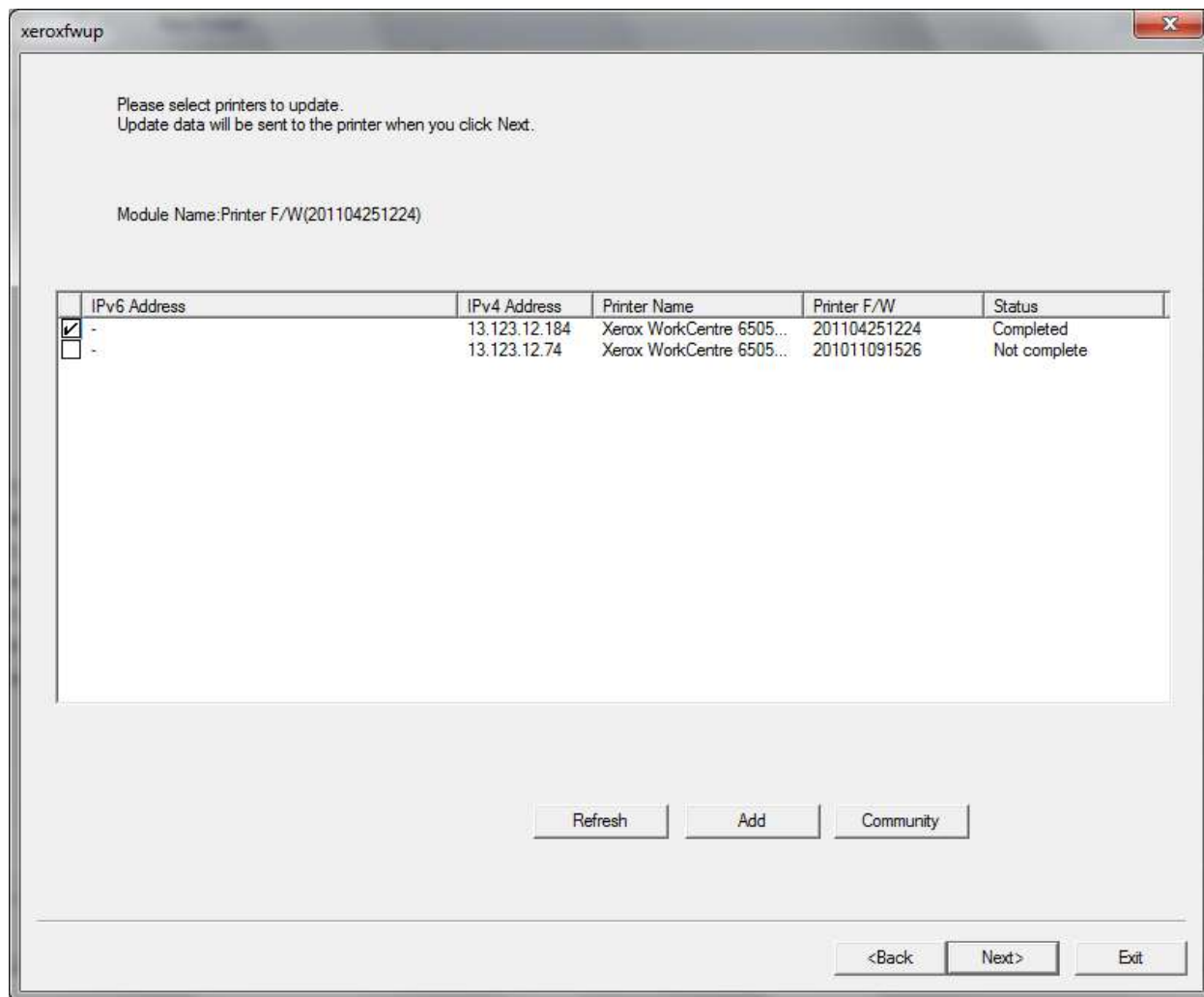
Caution: Do Not Reboot or Turn Off the printer during the firmware update process. The printer will automatically reboot when finished downloading the firmware.

1. Make sure the printer is powered on and connected over network or USB.
2. On the printer, print a Configuration Page or Printer Settings Report to document the current printer settings.
3. On the computer, double-click on the **xeroxfwup.exe** icon located in the firmware folder.
4. The **xeroxfwup** window with the connection options is displayed. Two connections are available for updating the firmware, Network and USB. When updating devices that only have USB connections, only the USB connection option will be displayed. Select your connection and press **Next**

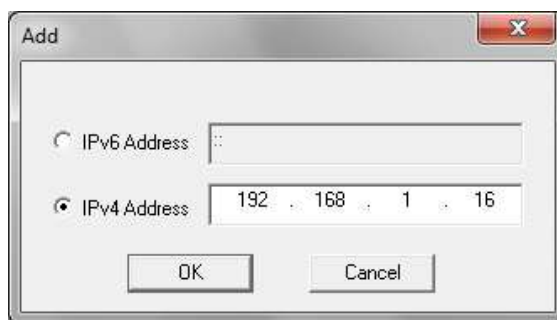


- **For Network connection:**

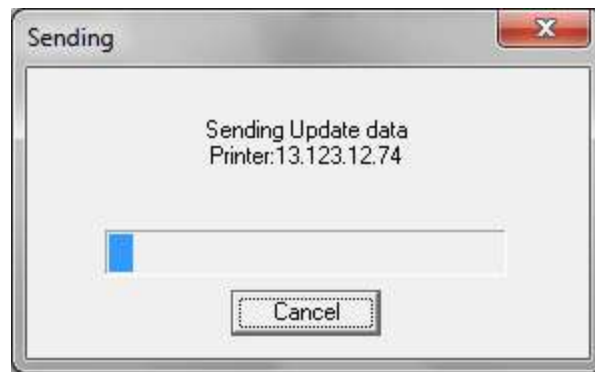
- If your printer IP address is listed, check the checkbox next to your printer. Click the **Next** button.



- If your printer IP address is not listed, click the **Add** button.
- Enter your printer IP address and click the **OK** button.



- Check the checkbox next to your printer IP address and click the **Next** button to send the firmware to your printer.



- The following messages will be displayed on your printer. These messages may vary slightly depending on the printer model, and whether you are upgrading the controller or engine firmware.

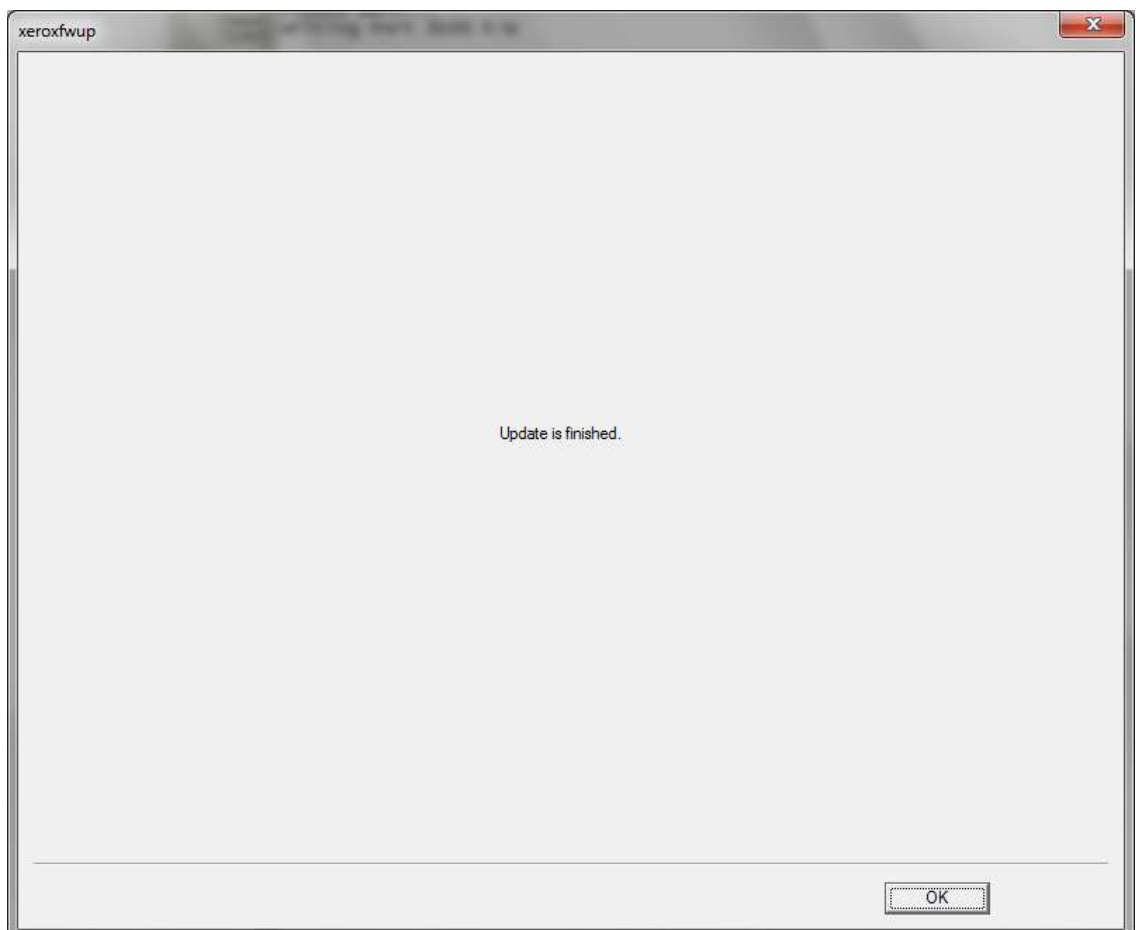
Receiving Data

Port 9100

Please Wait...

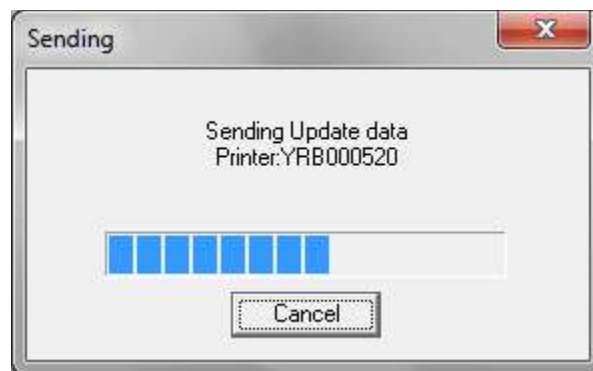
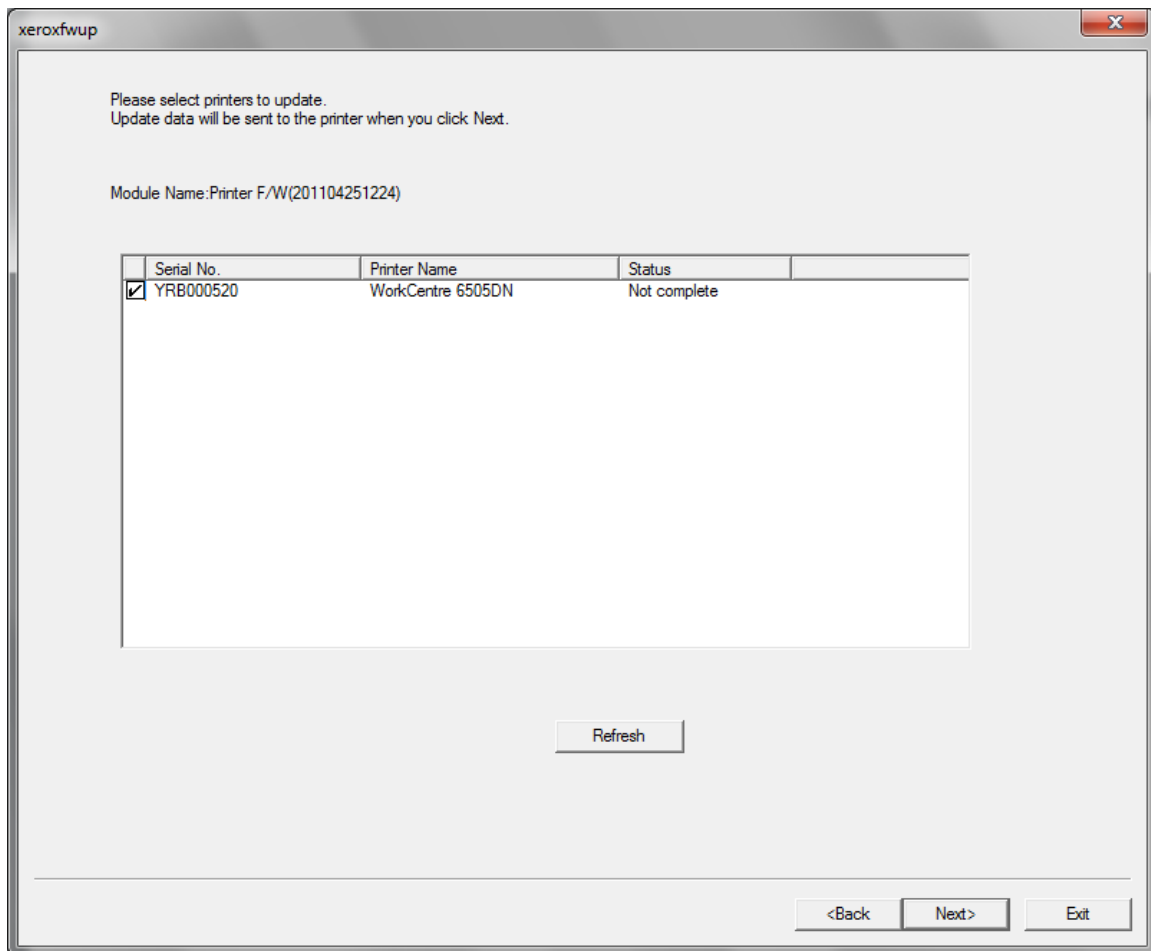
Writing Port 9100 F/W

- The printer will reboot after the firmware is updated. Print a Configuration Page or Printer Settings Report to verify the updated firmware version.
- After the firmware upgrade is complete, click the **OK** button to exit the firmware upgrade tool.



- **For USB connection:**

- Check the checkbox next to your printer. Click the **Next** button to send the firmware to your printer.



- The following messages will be displayed on your printer. These messages may vary slightly depending on the printer model, and whether you are upgrading the controller or engine firmware.

Receiving Data

USB

Please Wait...

Writing USB F/W

- The printer will reboot after the firmware is updated. Print a Configuration Page or Printer Settings Report to verify the updated firmware version.
- After the firmware upgrade is complete, click the **OK** button to exit the firmware upgrade tool.

