

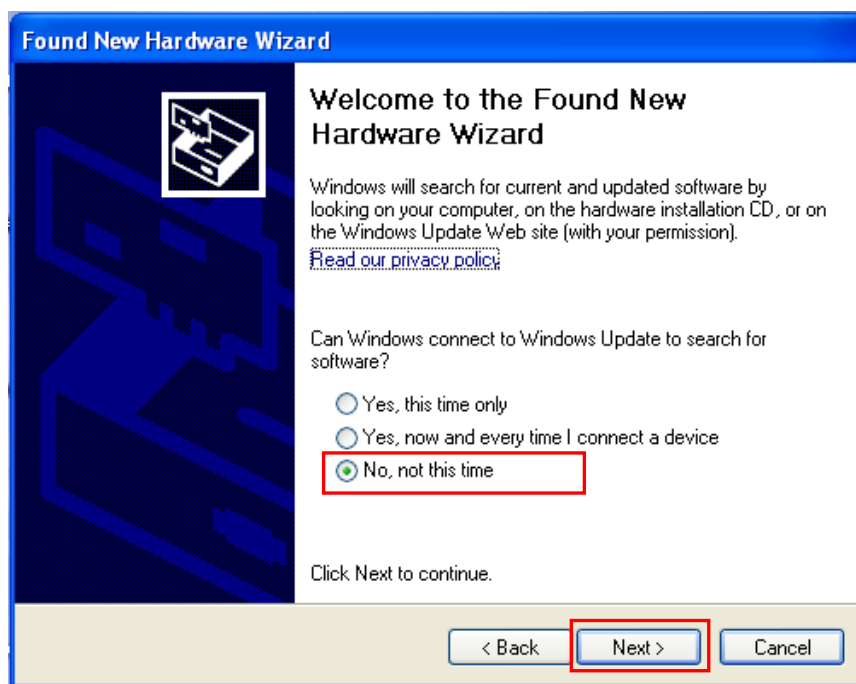
## Xerox Phaser 6115MFP 64-bit USB PnP Installation Instructions

Use the following procedure to install your Xerox Phaser 6115MFP 64-bit WIA scan driver, GDI print driver, and Multifunction Control Centre (MCC) over a Universal Serial Bus (USB) connection.

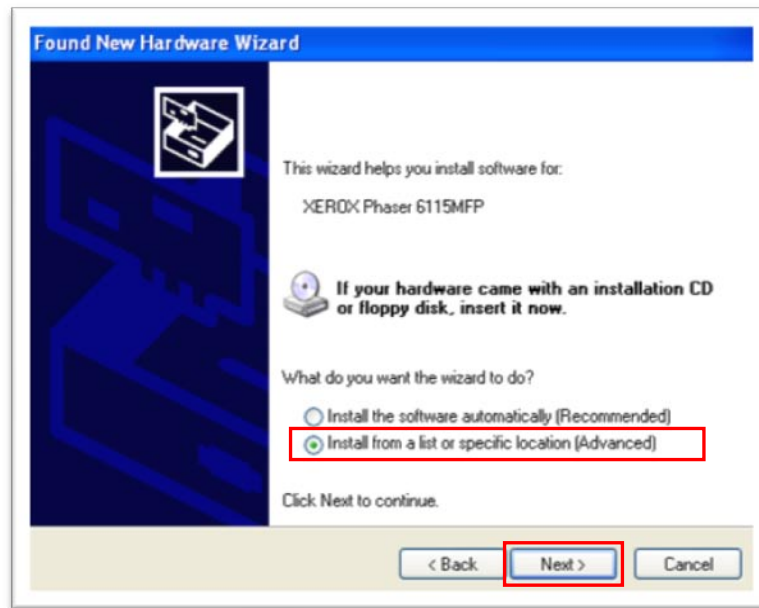
1. Double-click the p6115usb64.exe file to extract the USB print and scan drivers, and the Multifunction Control Center (MCC) utility to the C:\P6115MFPUSB64 folder.
2. Connect a USB 2.0 certified cable to available USB ports on the Phaser 6115MFP and your PC.
3. Turn the Phaser 6115MFP power switch to the On position.

### Scan Driver Installation

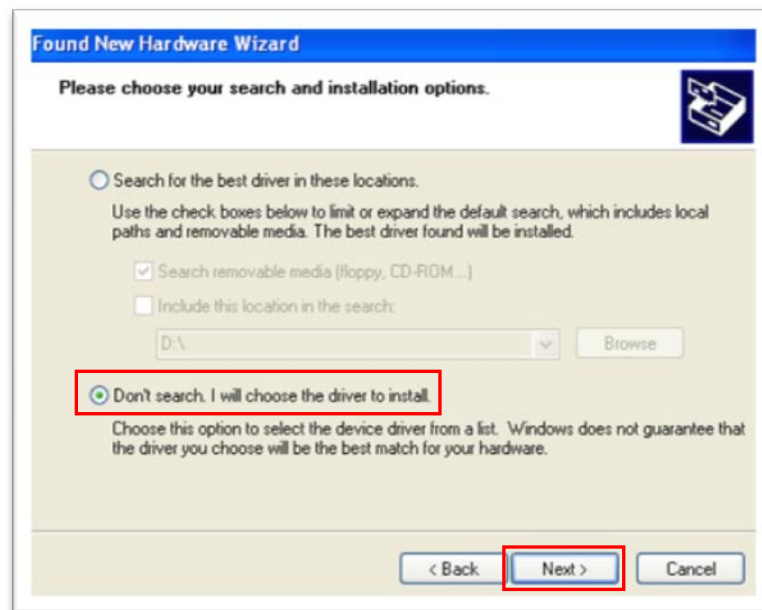
4. Windows will automatically detect the new device and launch the **Found New Hardware Wizard**, as depicted below.



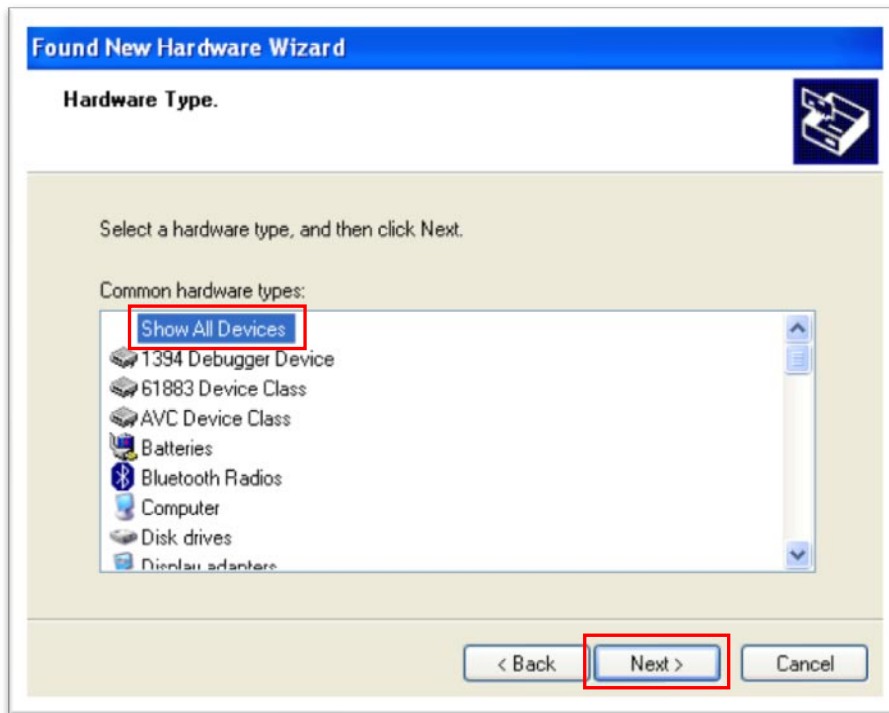
5. Click the *No, not this time* radio button, then click **Next**.



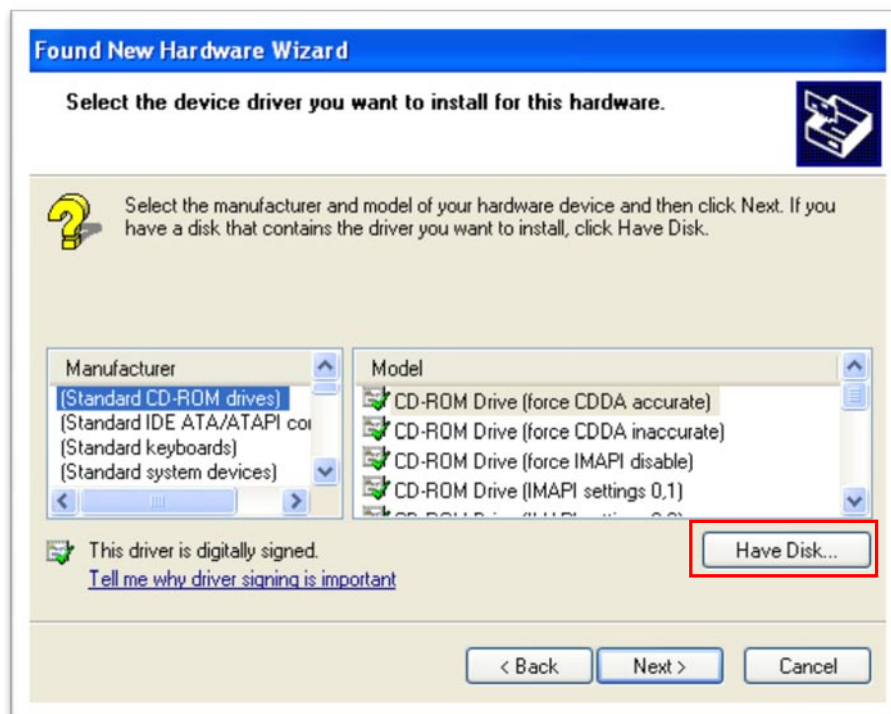
6. Click the *Install from a list or specific location (Advanced)* radio button, then click **Next**.



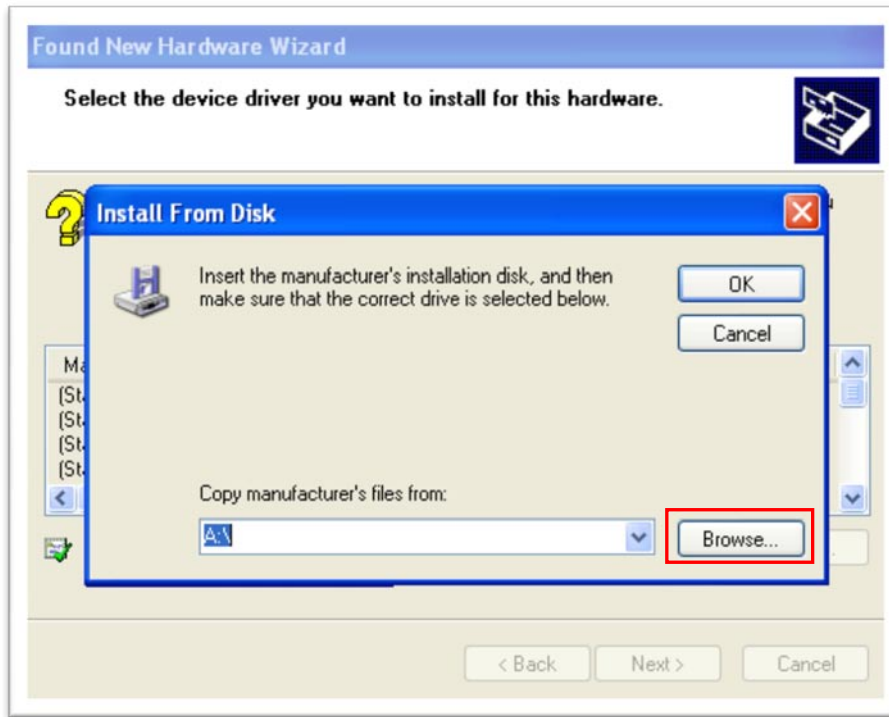
7. Click the *Don't search, I will choose the driver to install* radio button, then click **Next**.



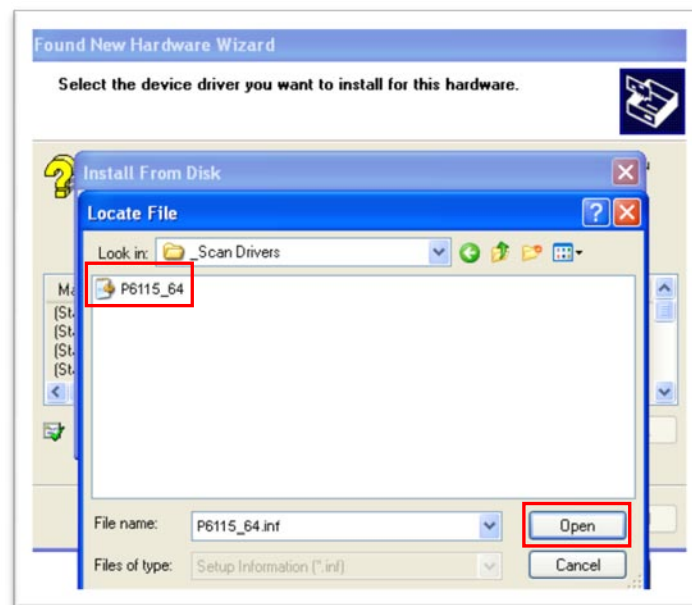
8. Verify that the *Show All Devices* option is selected, then click **Next**.



9. Click the **Have Disk...** button.



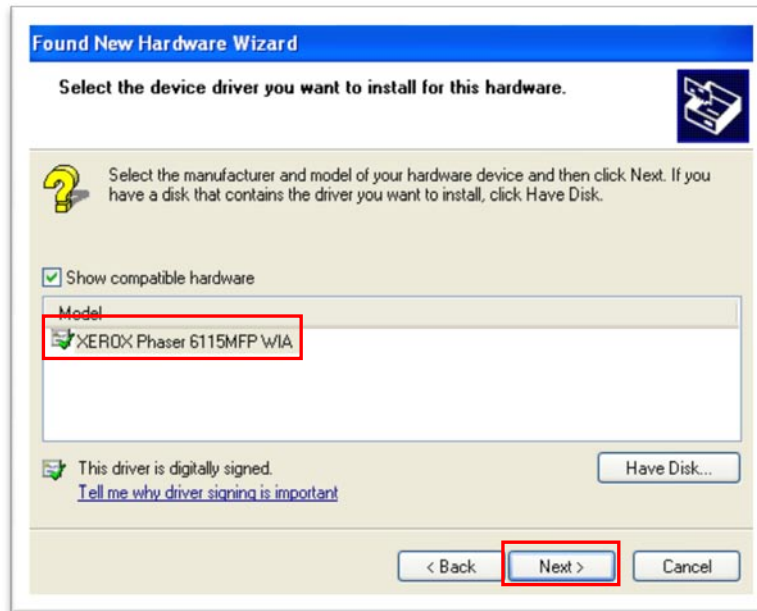
10. Click **Browse** to locate the scan driver.



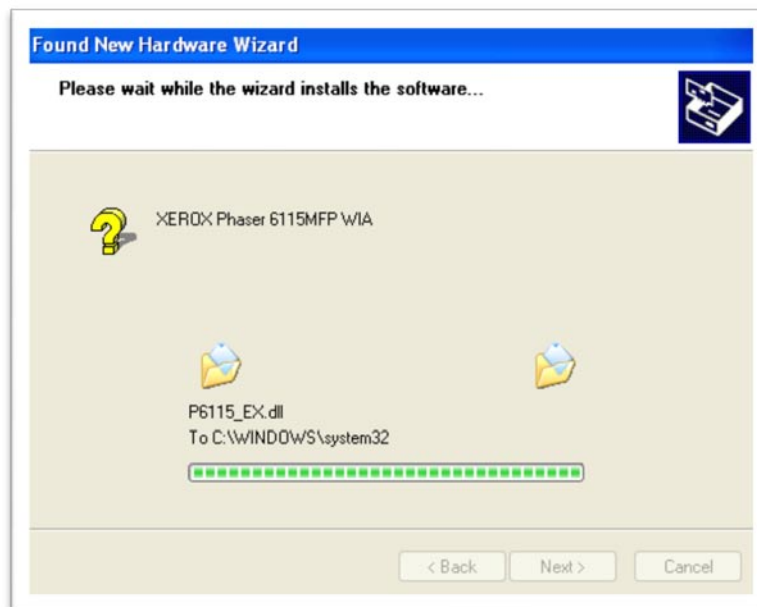
11. Browse to the **C:\P6115MFPUSB64\x64\_amd64\English\\_Scan Drivers** folder and select the **P6115\_64.inf** file, then click **Open**.



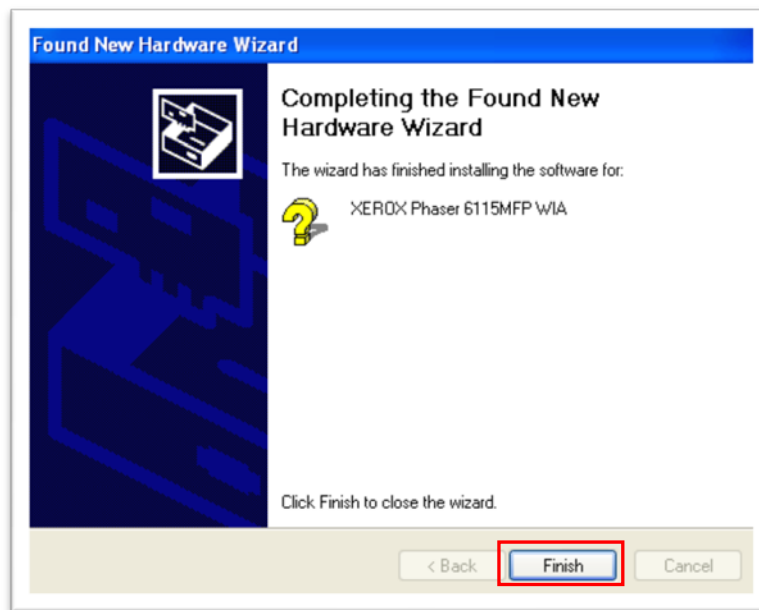
12. At the *Install From Disk* window, click **OK**.



13. Select **XEROX Phaser 6115MFP WIA**, then click **Next**.



14. The WIA scan driver files are copied to the computer.

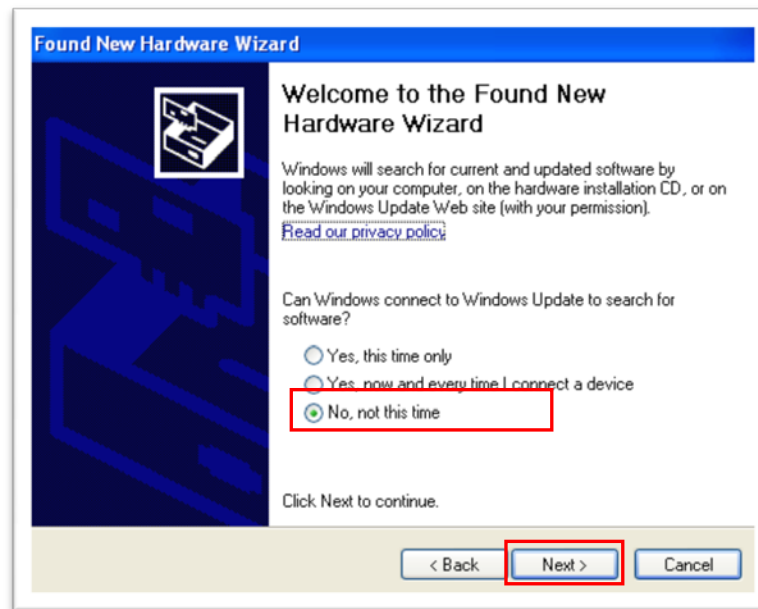


15. The WIA scan driver is now installed. Click **Finish** to continue.

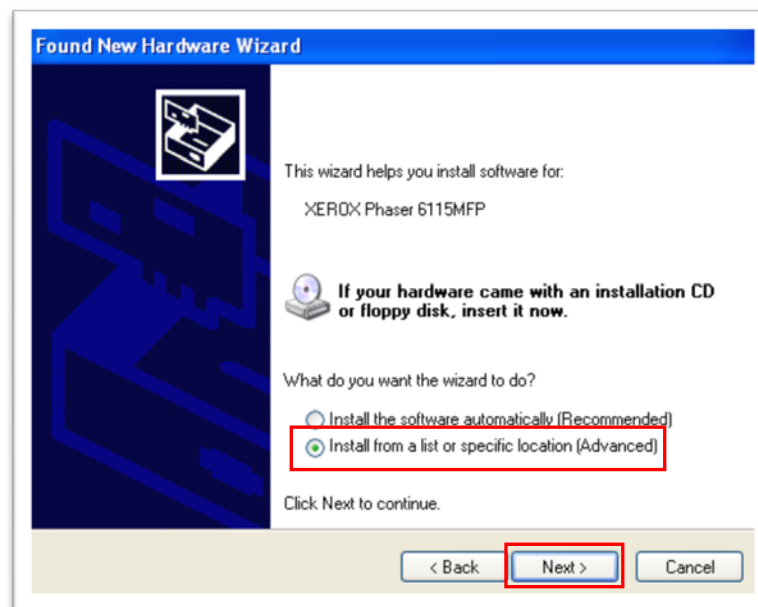
16. Next, the printer driver will be installed.

## Printer Driver Installation

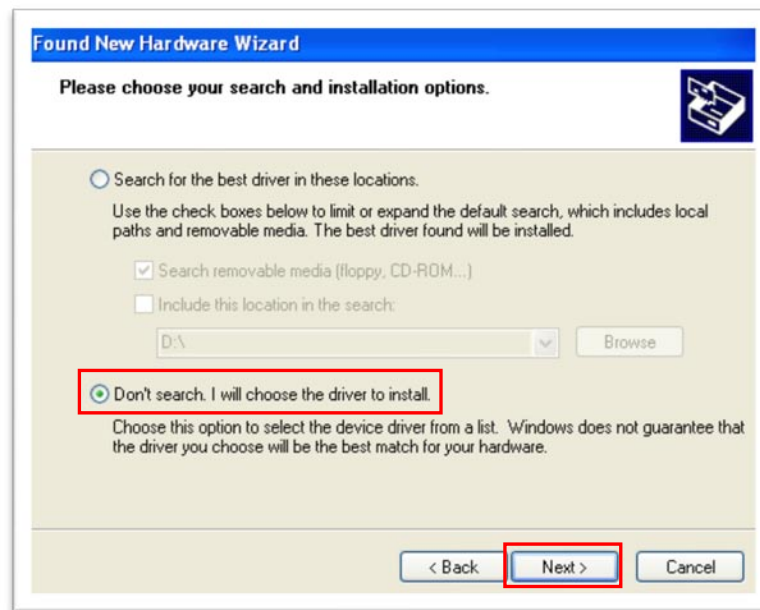
17. The **Found New Hardware Wizard** will launch a second time to install the printer driver.



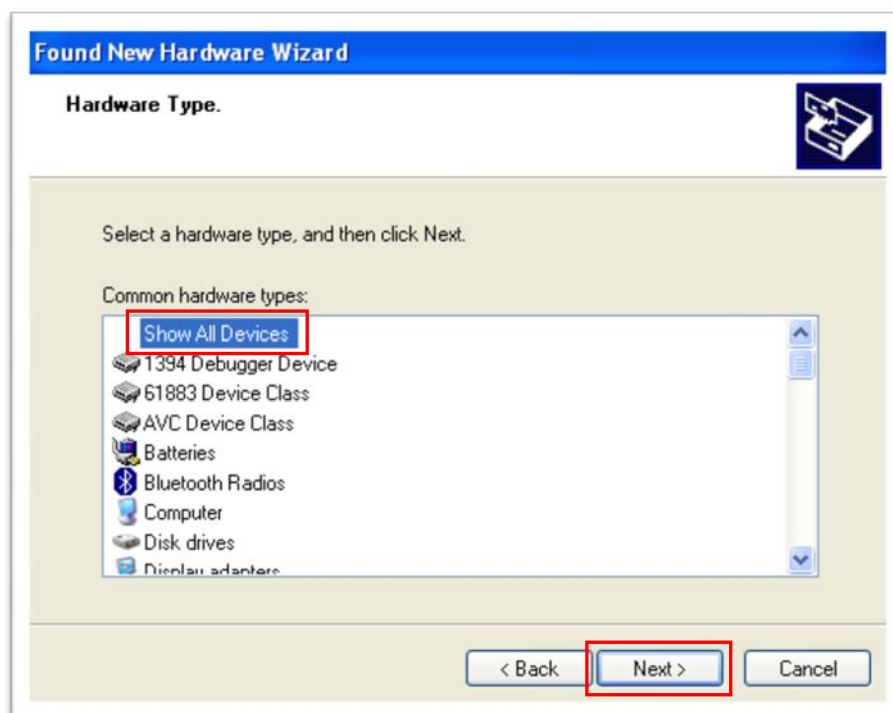
18. Click the *No, not this time* radio button, then click **Next**.



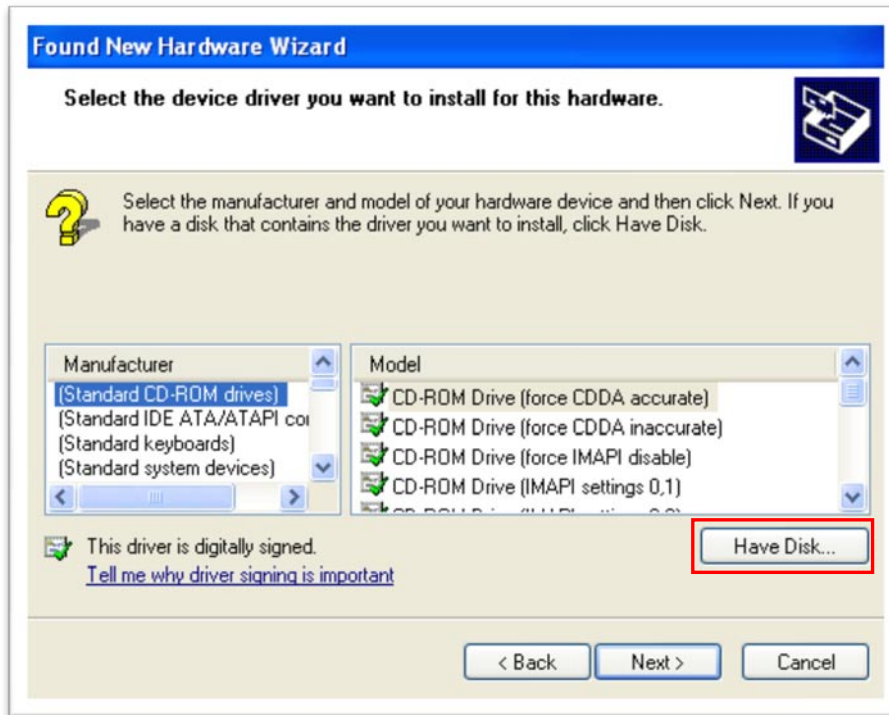
19. Click the *Install from a list or specific location (Advanced)* radio button, then click **Next**.



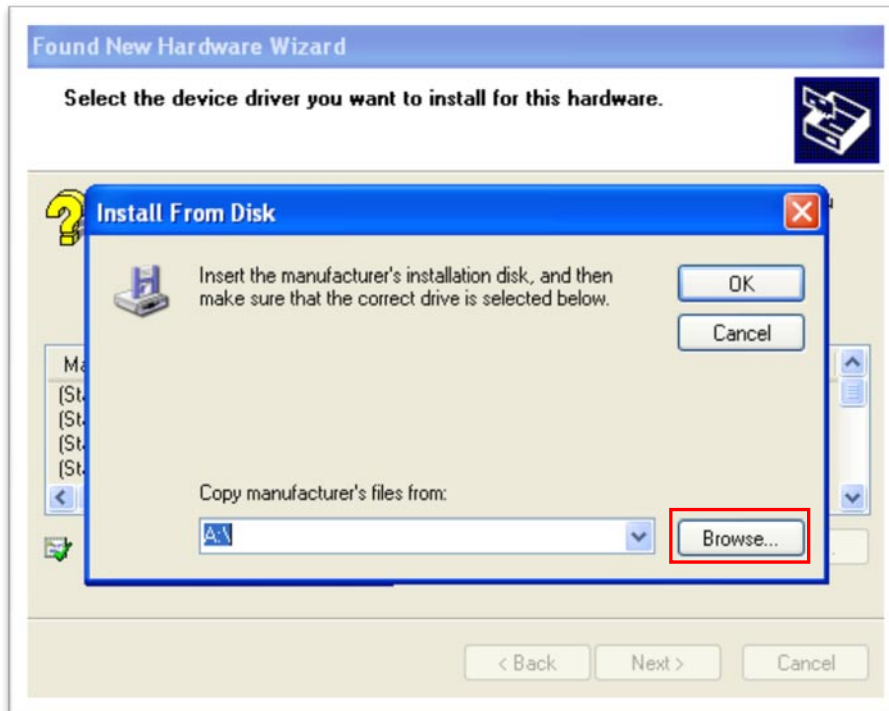
20. Click the *Don't search, I will choose the driver to install* radio button, then click **Next**.



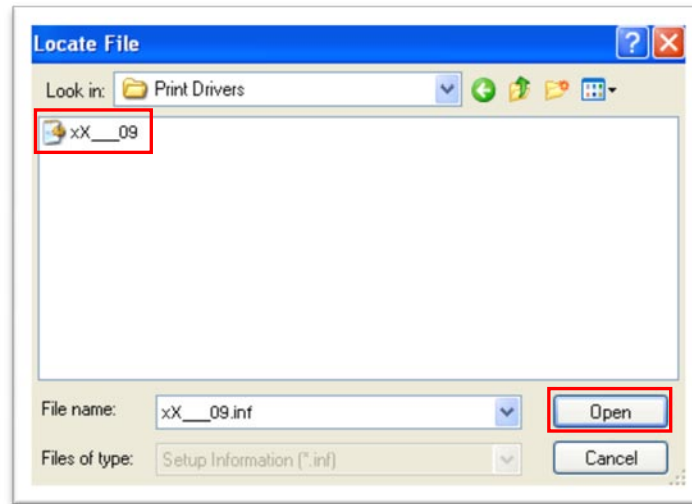
21. Verify that the *Show All Devices* option is selected, then click **Next**.



22. Click the **Have Disk...** button.



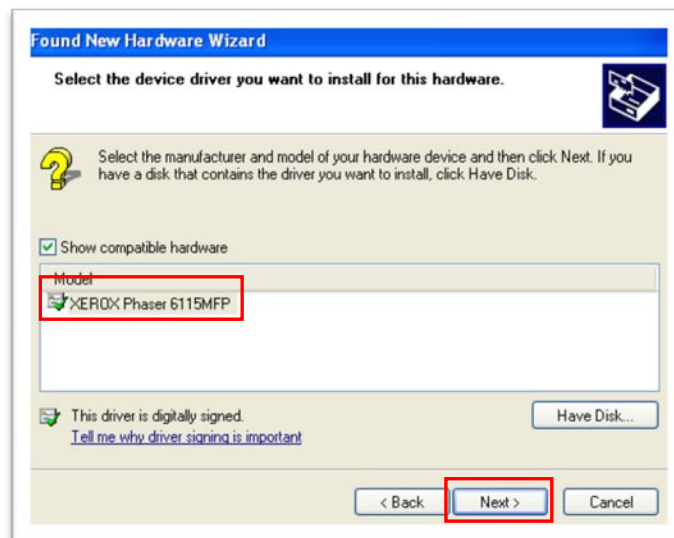
23. Click **Browse** to locate the printer driver.



24. Browse to the **C:\P6115MFPUSB64\x64\_amd64\English\Print Drivers** folder and select the **xX\_\_09.inf** file, then click **Open**.



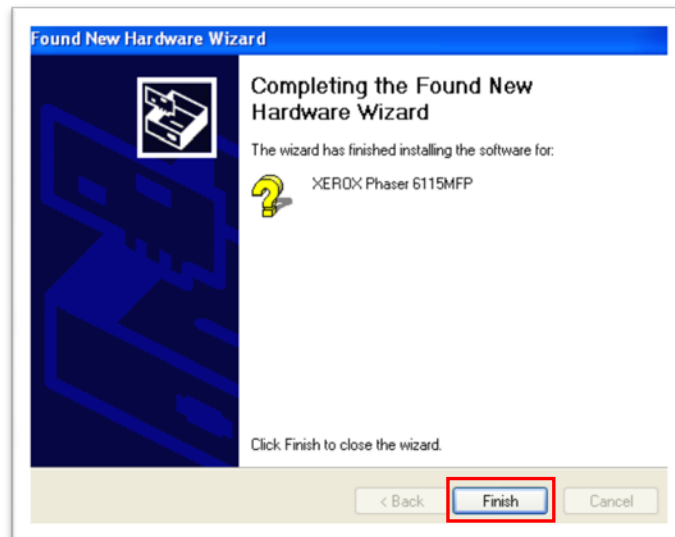
25. At the *Install From Disk* window, click **OK**.



26. Select **XEROX Phaser 6115MFP**, then click **Next**.



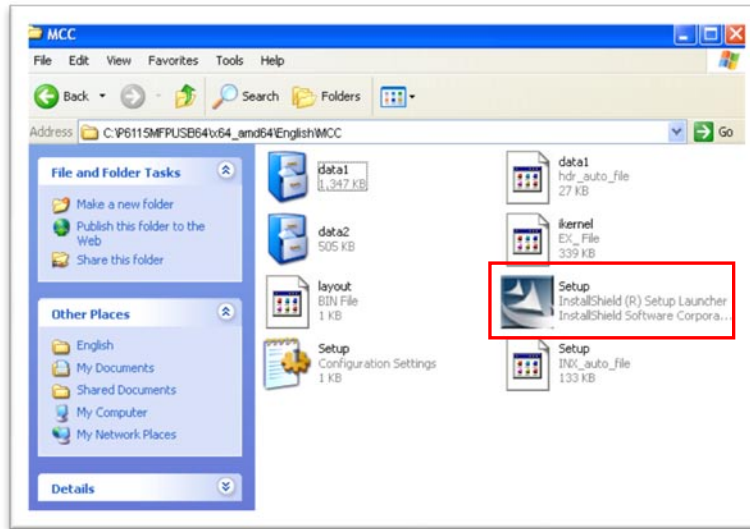
27. The printer driver files are copied to the computer.



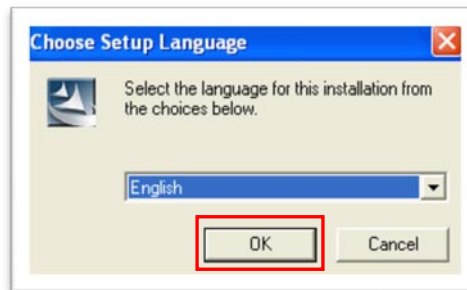
28. The printer driver is now installed. Click **Finish** to continue.

## Multifunction Control Centre Installation (Recommended)

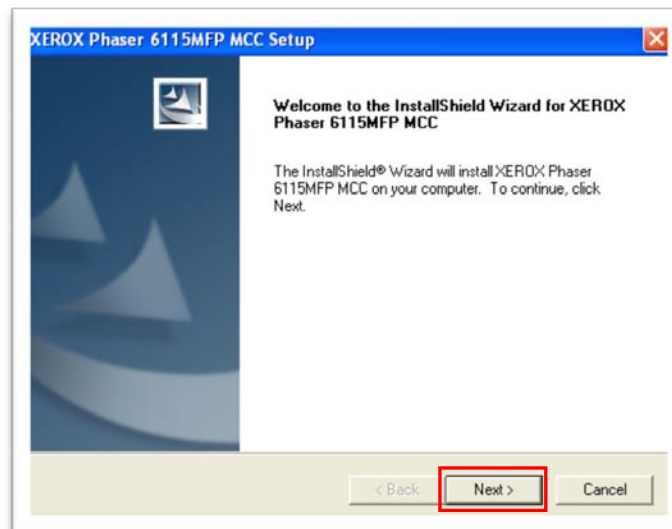
1. Browse to the **C:\P6115MFPUSB64\x64\_amd64\English\MCC** folder.



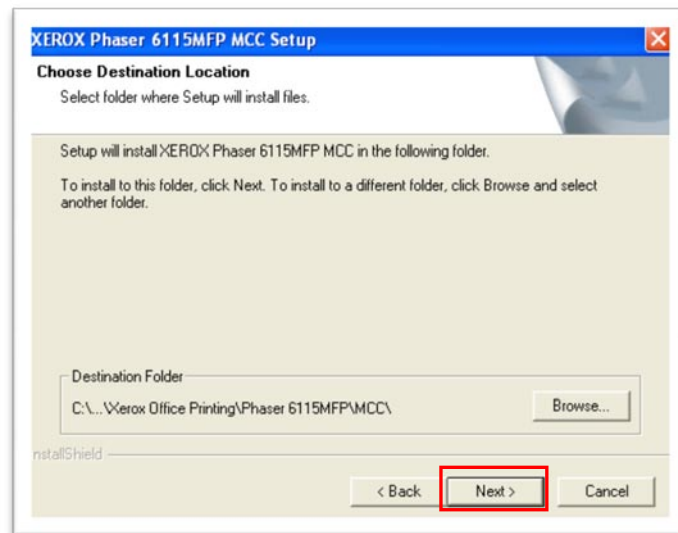
2. Double-click the **Setup.exe** icon to launch the installer.



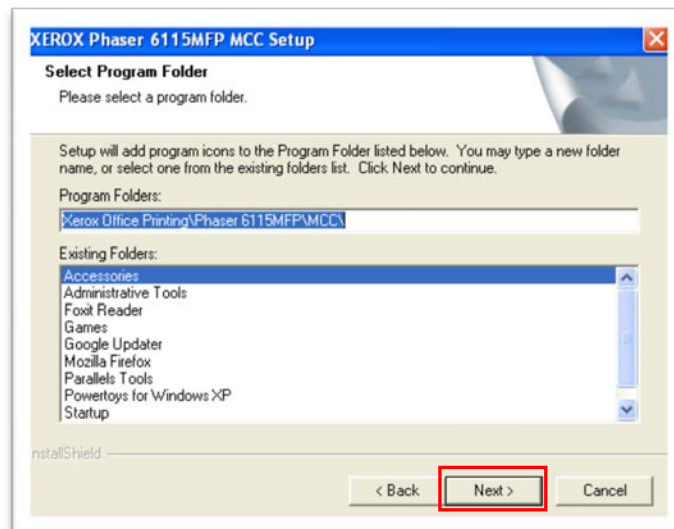
3. Select the desired language, then click **OK**.



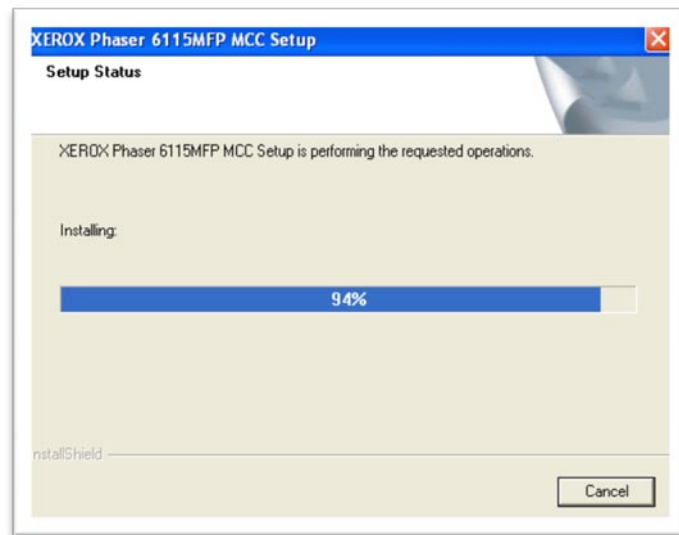
4. Click **Next** to continue.



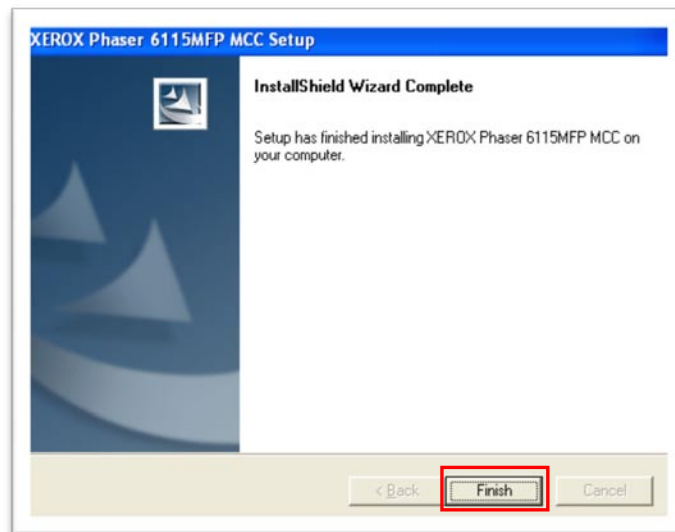
5. Click **Next** to accept the default destination location.



6. Click **Next** to accept the default program folder.



7. The required files are copied to the computer.



8. Click **Finish** to complete the installation.