

Phaser 4500 Firmware Release Notes and Installation Instructions

Xerox Phaser 4500 Firmware Release Notes for Version: OS 4.46 / PS 02.18 / Net 25.18.08.11.2005

Code changes in OS 4.46 / PS 02.18 / Net 25.18.08.11.2005

Network Fixes

- Printer fails to renew/register WINS name after power off
- DHCP: Printer will not boot until it has an IP
- NBNS does not start and the printer fails to register WINS name after NVRAM reset
- Ill configured SLP service causes printer to reboot.
- Job Accounting log password protected for FTP.
- SNMP is reporting incorrect black and total impression value

Embedded

- Implemented Meter Toner/PagePack feature set.
- PCL6: Blank sheet printed under some conditions.
- PCL6: Image shifted to the right
- PCL5e: Extra image inserted on duplex sheet
- PCL5e: Switching from duplex to simplex causes printing on wrong side of media.
- PCL: Blank letter page ejected when printing a multi-job Legal Duplex file
- Traversal Timeout isn't kicking in when confirm Tray prompt=ON and user have change either size/type & needs to change other item.
- PostScript: Test case prints Blank pages
- Job Types: changed order displayed on front panel to 'Secure, Proof, Saved'

Note: Firmware Version: OS 4.46 / PS 02.18 / Net 25.18.08.11.2005 also contains all of the fixes that went into previous releases of Phaser 4500 firmware.

Xerox Phaser 4500 Firmware Installation Instructions

Read this before beginning the firmware update

Caution: Some of the printer's settings may be changed from their present value back to the factory default values by the firmware update. It is recommended that customers save the configuration page and use it as a reference to restore the printer's settings after the firmware update is complete.

To print the configuration pages installed:

1. Use the arrow keys on the printer's front panel to select the "Information►" item, and press "Enter".
2. Press the down arrow key twice to scroll to the "Information Pages►" item, and press "Enter".
3. Press the down arrow key to scroll to the "Configuration Page" item, and press "Enter".
4. The printer prints two pages of configuration information.

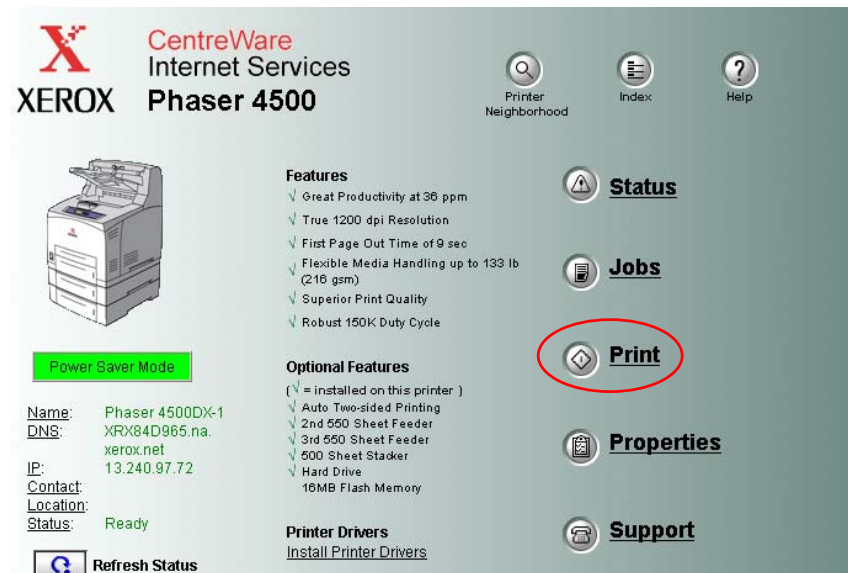
Note: The firmware versions currently installed are displayed on the eighth line of the left column on the first page, under the "General Information" heading:

I. Updating a Phaser 4500 using a TCP/IP Network Connection

Note: This is the preferred method for installing the firmware update for most environments.

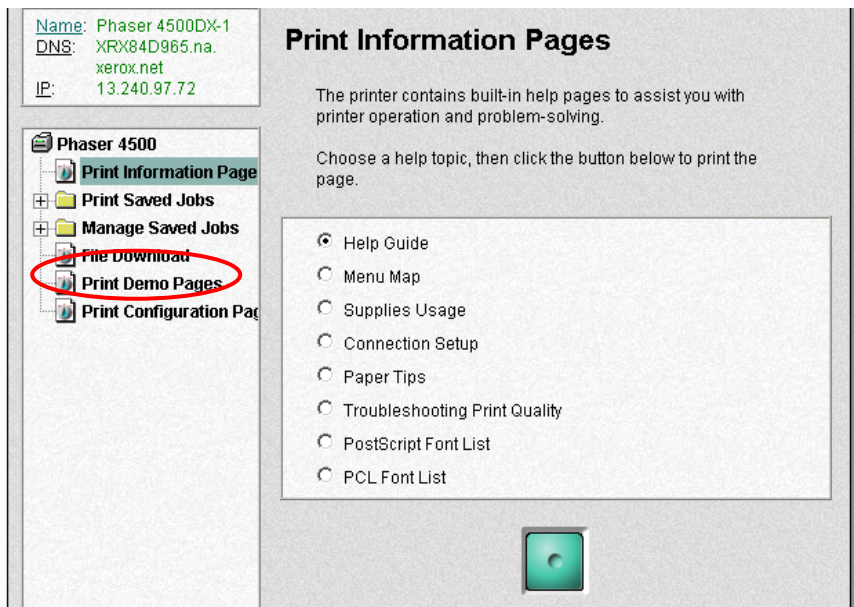
1. Launch your preferred web browser on your computer. Microsoft Internet Explorer, Netscape Navigator, Apple Safari, or most other web-browsers are supported.
2. Enter the TCP/IP address of the printer or its DNS network name in the web browser's address bar, and press Return or Enter to open the page. The address bar is typically at the top of a browser window.
3. Click on the "Print" button in the list of functions on the right side of the page.
Shown in the bottom-right red oval.

Figure 1: Enter the printer's address and select the "Print" item:



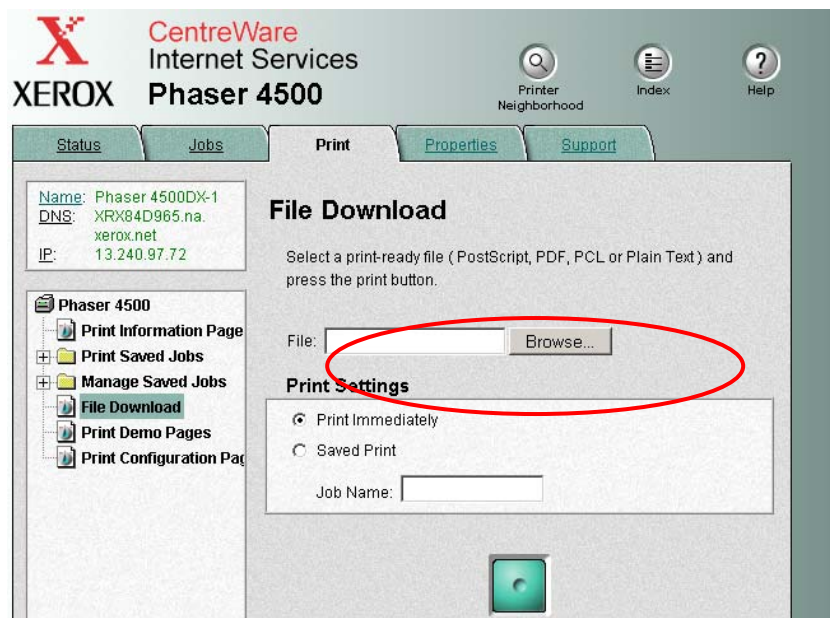
4. Click on the "File Download" link in the list of options on the left side of the page. *Shown in the red oval on the left side of the page.*

Figure 2: Select the "File Download" section



5. Click the “Browse” button. In the resulting file open window, select the firmware update file named “4500_G02.18.ps” that is provided as part of this package. *Shown in the red oval.*

Figure 3: Select the firmware update file and press the green button to send it.



6. Click the Blue button to transmit the firmware update to the printer.
7. The printer restarts automatically when the update process is complete.

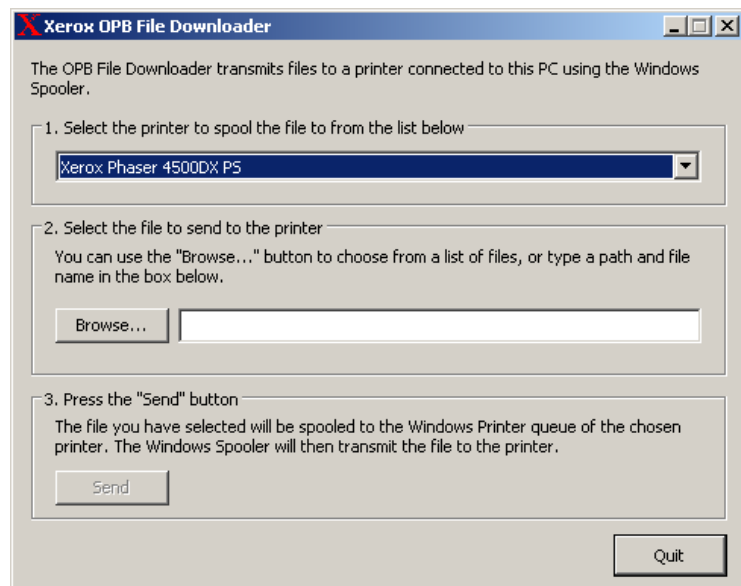
Caution: Do not attempt to cancel the firmware update process or turn off the printer power during the update. The printer might be left in an inoperable state that requires service. The printer automatically restarts after the firmware update process is complete.

8. Restore the printer’s settings to their previous values shown in the configuration page printed earlier. Settings may be changed at the printer’s front panel interface, or through CentreWare IS using a web browser.

II. Updating a Phaser 4500 from a computer with a Microsoft Windows operating system, connected by USB, Parallel, or Novell Connection

1. Start the “OPB File Downloader.exe” application located in the firmware package by double-clicking its icon.
2. Select the Phaser 4500 printer queue in the pull-down list of installed printer queues.
3. Use the “Browse...” button to select the firmware update file “4500_G02.18.ps”, and then press the “Send” button. The firmware update is sent to the printer using the Windows print spooler.

Figure 4: Sending the update with the Xerox File Downloader



4. The printer restarts automatically when the update process is complete.

Caution: Do not attempt to cancel the firmware update process or turn off the printer power during the update. The printer might be left in an inoperable state that requires service. The printer automatically restarts after the firmware update process is complete.

5. Restore the printer's settings to their previous values shown in the configuration page printed earlier. Settings may be changed at the printer's front panel interface, or through CentreWare IS using a web browser.