

## Phaser 3450 Firmware Update version 1.32

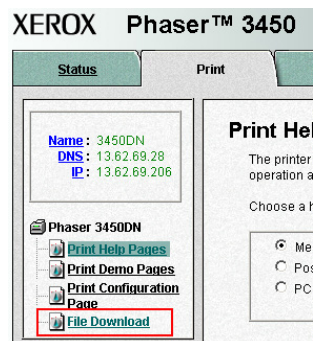
*This firmware update includes product improvements that have been implemented since the product's initial release. This firmware update is recommended for all customers.*

**To download the firmware update file to the printer when using an Ethernet (TCP/IP) connection, use CentreWare Internet Services (CWIS):**

1. From the workstation, open an Internet web browser.
2. Enter the IP Address of the printer in the browser's **Address** field, and then press [Enter] on the keyboard. The CWIS home page will be displayed.
3. Click on the [Print] button.



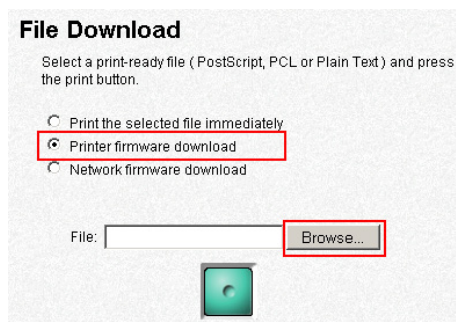
4. Click on the [File Download] link.



5. Click on the [Printer Firmware Download] radio button.

**WARNING: If the Printer Firmware Download radio button is not selected, the firmware update process will fail.**

6. Click on the [Browse] button, navigate to and double-click on the firmware update file. The firmware update file will be displayed in the **File:** field.



- Click on the green button to download the update file to the printer.

**WARNING: Do not interrupt the firmware update process. Interrupting the process may cause the printer to become inoperable.**

**File Download**

Select a print-ready file (PostScript, PCL or Plain Text) and press the print button.

☐ Print the selected file immediately

☒ Printer firmware download

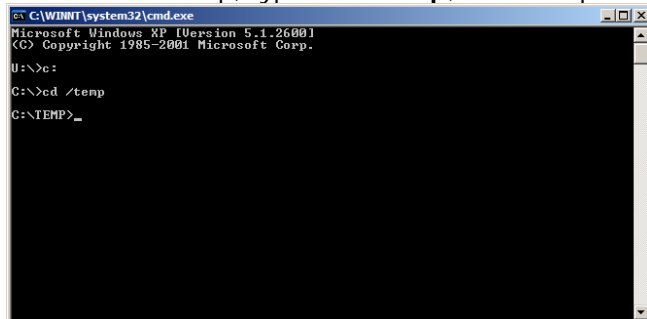
☐ Network firmware download

File:

- Wait until the printer displays 'Reset Printer' on the Display Screen.
- Power the printer OFF, wait 15 seconds, and then power the printer ON. The printer is now ready for use with the new firmware.

**To download the firmware update file to the printer when using a Parallel connection, use the *LPT1 copy* command:**

- Open an MS-DOS or Command Prompt window (Start/Programs/MS-DOS or Command Prompt).
- In the DOS or Command Prompt window, use the **cd** (Change Directory) command to navigate to the directory containing the firmware update. For example, if the file is located in C:/temp, type: **cd /temp**, and then press [Enter]

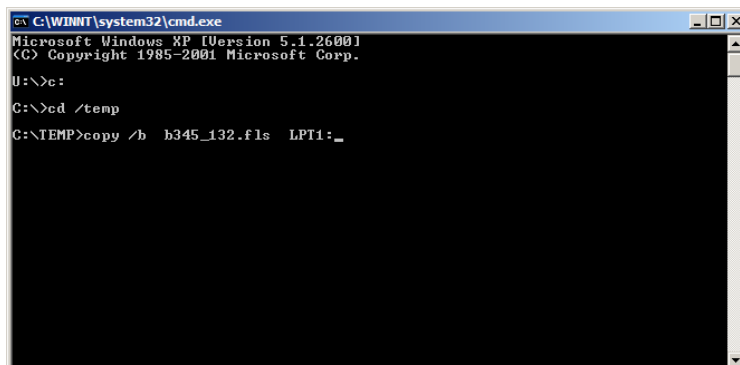


```
C:\WINNT\system32\cmd.exe
Microsoft Windows XP [Version 5.1.2600]
(C) Copyright 1985-2001 Microsoft Corp.

U:\>cd /temp
C:\TEMP>
```

- Use the **copy** command to copy the file to the LPT port on which the printer is located. For example, if the printer is located on LPT1 and the file to be downloaded to the printer is named RESET.ps, the command would be:

**copy /b b345\_132.fls LPT1:**



```
C:\WINNT\system32\cmd.exe
Microsoft Windows XP [Version 5.1.2600]
(C) Copyright 1985-2001 Microsoft Corp.

U:\>cd /temp
C:\TEMP>copy /b b345_132.fls LPT1: _
```

4. After the command has been typed, press the [Enter] button. The firmware update file will be downloaded to the printer.

**WARNING: Do not interrupt the firmware update process. Interrupting the process may cause the printer to become inoperable.**

5. Wait until the printer displays 'Reset Printer' on the Display Screen.
6. Power the printer OFF, wait 15 seconds, and then power the printer ON. The printer is now ready for use with the new firmware.

**NOTE:** The printer can be forced into a download mode if for some reason the download fails and the printer does not reboot or does not accept the download through the parallel port.

To put the printer into download and flash through the parallel port only, do the following.

- 1) Turn the printer off.
- 2) Depress the red cancel button and the up arrow button at the same time and power on the printer. "Download mode Press Online Key" is displayed on the front panel.
- 3) Release the two buttons and press the red cancel button again to confirm download mode. The display will then say "Wait Image".
- 4) Download the firmware from a MS-Dos window using the copy command in step 3 above to the parallel port.
- 5) Power cycle the printer when the front panel says to "Reset the Printer".