

**Speed**

**DocuColor 2240:** A4/210 x 297mm LEF  
• 22 ppm colour / 40 ppm black and white  
**DocuColor 1632:** A4/210 x 297mm LEF  
• 16 ppm colour / 32 ppm black and white

**Resolution****Copy**

• 600 x 600 dpi plus Photo Mode

**Print**

Three resolution selections:

• 1200 x 1200, 1200 x 600, or 600 x 600 dpi

**Scan**

Four resolution selections:

• 600 x 600, 400 x 400, 300 x 300, or 200 x 200 dpi

**Printing Screens**

• Text and Photo Modes

**Print Controller**

• Xerox Integrated  
• Power PC 750, 400 MHz  
• 512 MB printing memory  
• 10 GB hard disk (min.)  
• Genuine PostScript Level 3, PCL 5e and 6 (emulation)  
• 10/100 BaseT-standard

**Print Drivers**

• Windows 95/98/NT 4.x/2000/XP  
• Macintosh OS 9.x  
• Xerox Web User Interface

**Base Configuration**

• Print engine with controller  
• Scanner with stand  
• Duplexing Automatic Document Feeder (DADF): 50-sheet capacity  
• Trayless duplex  
• Electronic pre-collation  
• High-Capacity Tray: A4/210 x 297mm  
• Offsetting Catch Tray

**Special Copying Features**

• Multiple-up (also for printing)  
• Book Mode/Split Scan  
• Booklet Creation  
• Auto Rotation  
• Poster Mode  
• Program Ahead/Scan Ahead

**Scanback**

• Scan (TWAIN) support  
• Scan to mailbox  
• UI-initiated scanning  
• Scan from DADF

**Productivity and Document Management**

• RIP while receiving new data  
• RIP while printing  
• Print continuously  
• Document set printing  
• Reverse order printing  
• Electronic collation

**4 Paper Tray Capacity**

Assumes 90gsm bond

• Tray 1: 520 sheets  
• Tray 2: 520 sheets  
• Tray 3 + 4: 2,000 sheets (A4/210 x 297mm)  
• Tray 5 (bypass): 100-sheet capacity  
• Total = 3,140 sheets  
• Automatic tray switching  
• Load while printing

**Maximum Sheet Size**

• 305 x 483mm

**Maximum Image Sizes**

• 297mm x 478mm, guaranteed image integrity  
• A3/297 x 420mm, full bleed

**Supported Paper Weights**

• Tray 1: 64 to 105gsm  
• Trays 2-4: 64 to 105gsm  
• Tray 5 (bypass): 64 to 220gsm

**Speed by Media****DocuColor 2240**

Plain paper (A4/210 x 297mm LEF):

• Black and white: 40 ppm; colour: 22 ppm  
Transparency:  
• Black and white: 16 ppm; colour: 8 ppm  
Heavyweight 1 (106 to 169gsm):  
• Black and white: 16 ppm; colour: 11 ppm  
Heavyweight 2 (170 to 220gsm):  
• Black and white: 11 ppm; colour: 11 ppm

**DocuColor 1632**

Plain paper (A4/210 x 297mm LEF):

• Black and white: 32 ppm; colour: 16 ppm  
Transparency:  
• Black and white: 13 ppm; colour: 7 ppm  
Heavyweight 1 (106 to 169gsm):  
• Black and white: 13 ppm; colour: 8 ppm  
Heavyweight 2 (170 to 220gsm):  
• Black and white: 8 ppm; colour: 8 ppm

**Warm-up Time**

• Sleep Mode: 45 sec.  
• Low Power Mode: 30 sec.

**First-Print-Out Time (FPOT)****Colour Priority Settings**

• Black and white: 6.8 sec.; colour: 10.1 sec.

**Black-and-White Priority Settings**

• Black and white: 4.3 sec.; colour: 12.5 sec.

**Optional Accessories**

• Finisher: 1,000-sheet capacity  
• Token Ring connectivity  
• Foreign Interface

**Customer Replaceable Units**

• 4 Toners: cyan, magenta, yellow, black  
• 4 Drum Cartridges: CMYK  
• Waste Toner container

**Electrical Requirements**

• 15 Amp (115v), 10 Amp (220/240v)

**Dimensions (W x D x H)**

• 666 x 780 x 1145mm

# Colour means business everywhere



XEROX®, The Document Company®, the digital X®, DocuColor®, 2240 and 1632 are trademarks of or licensed to XEROX CORPORATION. Macintosh is a trademark or registered trademark of Apple Computer, Inc. PostScript is a registered trademark of Adobe Systems, Inc. Windows, Windows 95, Windows 98, Windows NT, Windows 2000, and Windows XP are trademarks of Microsoft Corporation. The Xerox Total Satisfaction Guarantee applies to equipment under a Xerox warranty or a Full Service Maintenance Agreement and is subject to certain conditions. Whilst this information is correct at the time of going to press, Xerox Europe reserves the right to change specifications of the equipment described herein without notice. 07/02





What you see. **Reality.**  
What you get.  
**No excuses colour.**

### The world works in colour.

*Colour offers advantages . . .*

It gets attention, makes an impact. Colour helps people learn faster and remember more.

### Now you can, too.

Affordable copy, print, and scanning, in black and white *and* colour, all in one device.

### Effortlessly.

DocuColor 2240/1632 makes colour printing easier than ever before. With simple drivers and an intuitive display, you will be an expert in no time at all.

**The speed you need** to improve workflow and efficiencies for your business. Fast, trayless duplex kicks your productivity up a notch. The intuitive touchscreen control panel puts the most-used functions at your fingertips and cuts training time.

**All the features you want . . .** built into one compact system. A huge paper supply (3,140 sheets!), special media tray, Duplexing Automatic Document Feeder, electronic pre-collation, and performance printing and copying capabilities are all standard.

**Innovative Xerox technology** produces bright, consistent colours plus superior image quality. A fully-embedded Xerox print controller cuts space requirements. Single-pass straight-line processing using fast Oilless Fusing and Intermediate Belt Transfer technology delivers high quality, economy, and performance.

**Bright, bold colour with emulsion aggregation (EA) toner.** Resolution of 1200 x 1200 dpi plus EA toner adds up to crisp images with outstanding fine line and shadow detail. EA toner is actually “grown”. That means we can control particle size and shape and insert the release agent. The result: razor sharp images, greater reliability, and no more service calls for oil streaks.

# introducing



### DocuColor does it all—any application, any format.

Easy-to-update newsletters using your desktop publishing software. Economical spreadsheets and powerful presentations. Professional-looking reports with interspersed colour and black-and-white pages produced quickly. Eye-popping annual reports from PDFs. DocuColor gives you the performance and flexibility you need to produce affordable documents that get the job done.

### Xerox DocuColor 2240 Xerox DocuColor 1632 Now colour means business.

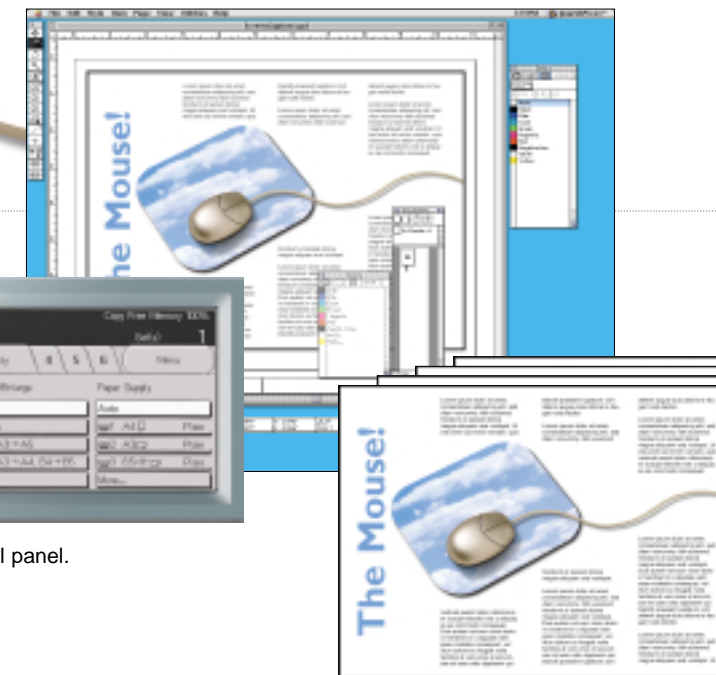
Xerox is committed to safeguarding our environment. All DocuColor systems are designed to conserve energy, use paper efficiently, and produce as little waste as possible.

With the use of the environmentally friendly emulsion aggregation toner, the DocuColor 2240/1632 is an ideal choice for environmentally conscious users.

**Total Satisfaction . . . guaranteed.** The exclusive Xerox Total Satisfaction Guarantee, recognised as the best in the industry, covers every Xerox DocuColor system. And you decide when you're satisfied.



Easy-to-use touchscreen control panel.  
Three print resolution choices.  
Four scan resolution choices.



# 2240 1632

## Xerox DocuColor® printer/copier



Create newsletters quickly and efficiently using your desktop publishing software.



Make presentations and spreadsheets—tools you use every day—look better.

Print your annual report from PDF files to circulate for review and signoff.

Produce black-and-white prints at 40 or 32 pages per minute.

Produce multiple sets effortlessly.