

Xerox® VersaLink® Product Enhancements Document

Firmware xx.51.51 PL6-R0-U2

Description of new features and enhancements to the products specified below.

Release Date: July 06,2021

dc21rn4027

Products (Click on product name to access software)	System	Controller ROM
Xerox®VersaLink®B400	37.51.51	1.57.11
Xerox®VersaLink®B405	38.51.51	1.57.11
Xerox®VersaLink®C400	67.51.51	1.57.11
Xerox®VersaLink®C405	68.51.51	1.57.11
Xerox®VersaLink®B600-B610	32.51.51	1.57.11
Xerox®VersaLink®B605-B615	33.51.51	1.57.11
Xerox®VersaLink®C500-C600	61.51.51	1.57.11
Xerox®VersaLink®C505-C605	62.51.51	1.57.11
Phaser6510 Windows Installer Mac Installer	64.51.51	1.57.11
WorkCentre6515 Windows Installer Mac Installer	65.51.51	1.57.11

Contents

Product Firmware Release xx.51.51	4
1. Hardware Reliability Fixes	4
Product Firmware Release xx.51.21	4
1. Device Install Wizard (DIW) initial install/setup improvements	4
Product Firmware Release xx.51.1	4
1. Remote Services Communication Fix	4
Product Firmware Release xx.50.61	4
1. USB Ports Power in Sleep Mode	4
2. Updates to comply with 2020 California Password law SB-327	5
3. Additional Language Support (Arabic)	5
4. Energy Star 3.0 Support	5
Product Firmware Release xx.45.61	5
1. Additional Audit Log Events	5
2. Keep USB Type A ports enabled in Sleep Mode	5
3. Ability to query LDAP server for user email address with Smartcard Authentication	6
4. SNMP / MIB Language	6
5. Other fixes in this release	7
Product Firmware Release xx.43.1	7
1. SNMP / MIB Language	7
2. ECDHE Cipher additions	7
3. Scan to email (Gmail)	8
4. Faxing of 8.5X11 LEF	8
5. IPsec enabled in Windows 10 Client	8
Product Firmware Release xx.42.1	8
1. Improved existing Audit Log Events	8
2. Remote Control Panel	8
3. Additional Language Support (Ukrainian and Croatian)	8
4. Server Fax	8
5. Secure Scanning Workflows	8
6. Show Supported Media Sizes	8
7. Device Alert Sounds	8
8. System Alert Notifications for Firmware Updates	8
9. Displaying the IPv4 Address on the Home Screen	9
Product Firmware Release xx.35.32	9

1. Enablement of Server Name Indication (SNI) on Versalink	9
2. Prompt at Device Control Panel	9
3. Print Configuration reports as Admin Under Smart Card Authentication	9
Product Firmware Release xx.35.1	10
1. Email addresses containing apostrophe in name	10
2. Fault 018-505 SMB-DOS Protocol error with Scan to Home & CAC.....	10
Product Firmware Release xx.34.1	10
1. Error message 016-404 displayed after 802.1x authentication renewal	10
2. XML Configuration Report translate into international languages.....	10
3. Changed Fax Forward setting when convenience authentication enabled.	10
4. Logged in user unable to delete their own jobs from LUI	10
Product Firmware Release xx.33.1	10
1. Google Cloud Print does not require a restart to freshen the jobs queue.....	10
2. Display performance on Local UI when searching the Address Book.....	10
3. Caveat: USB may not be recognized on Win7.x/8.x after upgrade.....	10
Product Firmware Release xx.31.81	11
1. USB Scanning added for Versalink A4 MFP devices.....	11
2. Cloning Webservice.....	11
3. XML Configuration Report.....	11
4. WPA2 - KRACK Vulnerability Addressed.....	11
Product Firmware Release xx.21.41	12
1. ThinPrint	12
2. Auto-populate the realm on walk-up UI	13
3. Eliminate thumbnail on fax confirmation sheet.....	14
4. Remove embedded web server support for 3DES cipher suite (Sweet32)	14
5. Default output tray setting for copy job	14
6. One-Touch Feature Enhancement.....	15
7. Personal Favorites	15
8. SNMPv3 FIPS 140-2 mode support.....	16
9. Simultaneous HTTP and HTTPS Support	16

Latest release information:

Product Firmware Release xx.51.51

1. Hardware Reliability Fixes

An important A4 device reliability improvement has been added to this version. The same improvement is already in versions xx.61.23 and higher.

Product Firmware Release xx.51.21

1. Device Install Wizard (DIW) initial install/setup improvements

This release improves the setup which is done for the initial install by improving the device install wizard.

Product Firmware Release xx.51.1

1. Remote Services Communication Fix

A software problem has been fixed that caused some devices to stop communicating to the Xerox Remote Servers if the feature was enabled. This service provides meter reads and supplies usage to automate replenishment and billing.

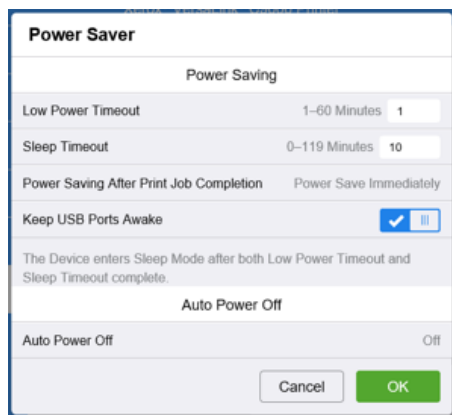
Product Firmware Release xx.50.61

1. USB Ports Power in Sleep Mode

This release completes the implementation across the remaining VersaLink products that allows the System Administrator the ability to keep the USB Type A ports awake while the device is in Sleep Mode. This allows USB accessories connected to the USB ports to function when the device goes to sleep such as:

- USB Smart Card readers can access and read the card, wake the device and login the user when a smart card is inserted.
- USB Proximity Card readers can read the card, wake the device and login the user when a Prox card is swiped.
- USB flash drive insertion can wake the device and display the “USB Drive detected” screen.

To activate: Login remotely to the device as System Administrator, navigate to System / Power Saver / Power Saving and select “Keep USB Ports Awake”, select “OK”.



Affected Products:

Model Name:
Xerox® VersaLink® B400 / B405
Xerox® VersaLink® B600 / B605 / B610 / B615

Xerox® VersaLink® B7025 /30/35
Xerox® VersaLink® C400 / C405
Xerox® VersaLink® C500 / C505 / C600 / C605
Xerox® VersaLink® C7000 / C7020 /25/30

2. Updates to comply with 2020 California Password law SB-327

This software release supports the California password law SB-327 effective January 1, 2020.

Upgrading existing devices to this release will have no impact on the default administrator password.

In the event a Reset to Factory Defaults operation is performed on a device after installing this release, the changes incorporated to support SB-327 will become effective, and the default administrator password for the device will be the device serial number.

This is a case sensitive password.

3. Additional Language Support (Arabic)

Arabic language is now supported on the Versalink devices.

4. Energy Star 3.0 Support

Energy Star -This software release ensures our products will continue to meet Energy Star. Energy Star 3.0 means more stringent power efficiency and conservation requirements and is going into effect October,2019. This software release provides the necessary updates to meet these new specifications.

Product Firmware Release xx.45.61

1. Additional Audit Log Events

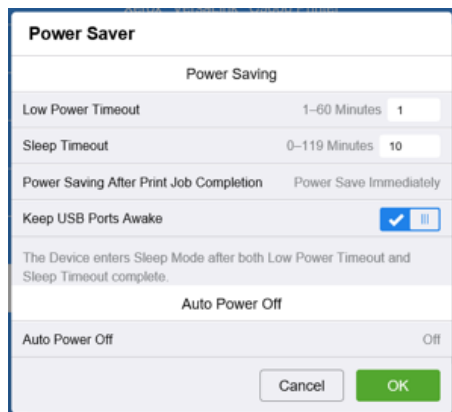
More events for security and other settings are available in the device's Audit Log.

2. Keep USB Type A ports enabled in Sleep Mode

This release allows the System Administrator the ability to keep the USB Type A ports awake while the device is in Sleep Mode. This allows USB accessories connected to the USB ports to function when the device goes to sleep such as:

- USB Smart Card readers can access and read the card, wake the device and login the user when a smart card is inserted.
- USB Proximity Card readers can read the card, wake the device and login the user when a Prox card is swiped.
- USB flash drive insertion can wake the device and display the "USB Drive detected" screen.

To activate: Login remotely to the device as System Administrator, navigate to System / Power Saver / Power Saving and select "Keep USB Ports Awake", select "OK".



Affected Products:

Model Name:
Xerox® VersaLink® B400 / B405

Xerox® VersaLink® B600 / B605 / B610 / B615	Availability in future release
Xerox® VersaLink® B7025 /30/35	
Xerox® VersaLink® C400 / C405	
Xerox® VersaLink® C500 / C505 / C600 / C605	Availability in future release
Xerox® VersaLink® C7000 / C7020 /25/30	

3. Ability to query LDAP server for user email address with Smartcard Authentication

Users were not receiving their scan to email because the email address was not valid.

There was a valid email address on the LDAP server, but the device could not be configured to query the server when using smartcard authentication.

The device obtains the user's email address from the Smartcard by default.

The device can now be configured to pull email address from the LDAP server instead of from the smartcard.

When the "Enablement Key" is applied, the device will obtain the user email address from LDAP server. The "Disablement Key" will restore the default condition.

Affected Products: All Xerox® VersaLink® Multifunction Device models.

Feature Enablement Instructions:

1. On the device's Embedded Web Server select System-> Security-> Feature Enablement
2. Enter correct enable/disable code from table below.

Requirements:

- LDAP contains the user's email address and the public key encipherment certificate contains the same email address.
Or
- LDAP contains the user's email address and the public key encipherment certificate contains a *blank* email address.

If the email address embedded in the public key encipherment certificate does *not match the user's email address on LDAP*, then the following will occur:

- Job will display on UI as complete with error code 027-708.
- The email body is blank.
- The email has no attachment.

The Feature keys are as follows: (include * character when entering)

Product Model	Enablement Key	Disablement Key
Xerox® VersaLink® B405	*3003461861	*3003461860
Xerox® VersaLink® B605 / B615	*3020461861	*3020461860
Xerox® VersaLink® B7025/30/35	*3004461861	*3004461860
Xerox® VersaLink® C405	*3002461861	*3002461860
Xerox® VersaLink® C505 / C605	*3016461861	*3016461860
Xerox® VersaLink® C7020/25/30/35	*3014461861	*3014461860
Xerox® Phaser® 6510 / WorkCentre 6515	*3005461861	*3005461860

4. SNMP / MIB Language

In software releases prior to xx.43.x1, the MIB language matched the language selected on the Local UI. This may cause issues for some remote management utilities when the device's local UI is set to a language other than English. In this release the MIB language setting is now independent of the Local UI language selection. The default language for the MIB is English and remains so regardless of the Local UI language selection.

The MIB language can be set independently if desired to a language other than English via the **prtGeneralCurrentLocalization.1** OID. As with the default setting, the MIB language set via the **prtGeneralCurrentLocalization** OID will remain independent of the Local UI language setting. The prtGeneralCurrentLocalization setting can be cloned when a clone file category "Defaults and Policies" is selected when creating the clone file.

5. Other fixes in this release

- Unable to log into printer webui as admin when connected with Google Chrome version 74.0.3729.131.
- When a DADF jam occurs during Twain scanning, the PC locks up.
- Unable to browse Webpage of VersaLink devices via DNS name if CSRF Protection feature is enabled.

Product Firmware Release xx.43.1

1. SNMP / MIB Language

In prior software releases the MIB language matches the language selected on the Local UI. Some issues have arisen in the field with XDM and XSM (Xerox Device Manager, Xerox Supplies Manager) software when a device's local UI is set to a language other than English. In this release the MIB language setting is independent of the Local UI language selection. The default language for the MIB is English and remains so regardless of the Local UI language selection. The MIB language can be set independently if desired to a language other than English via the **prtGeneralCurrentLocalization.1** OID. As with the default setting, the MIB language setting will remain independent of the Local UI language setting. The prtGeneralCurrentLocalization setting can be cloned when a clone file category "Defaults and Policies" is selected.

2. ECDHE Cipher additions

This release adds support for the following ECDHE ciphers:

TLS_ECDHE_RSA_WITH_AES_128_CBC_SHA

TLS_ECDHE_RSA_WITH_AES_256_CBC_SHA

TLS_ECDHE_RSA_WITH_AES_128_CBC_SHA256

TLS_ECDHE_RSA_WITH_AES_256_CBC_SHA384

TLS_ECDHE_RSA_WITH_AES_128_GCM_SHA256

TLS_ECDHE_RSA_WITH_AES_256_GCM_SHA384

These ciphers can be used by any TLS communication supported by the device including the embedded web server, EIP and the XCP Plugin server communications.

These ciphers are not available for use by the EWS or EIP until a Feature Enablement Key is entered.

These ciphers are available to the XCP Plugin server as soon as the XCP Plugin server feature is enabled regardless of Feature Enablement Key entry.

The key codes below enable these ciphers. When the "Enablement Key" is applied, the ciphers are available. The "Disablement Key" will restore the default condition, i.e. ciphers are not available.

Feature Key Instructions:

1. On the device's Embedded Web Server select System-> Security-> Feature Enablement
2. Enter correct enable/disable code (include the * character)

The Feature keys are as follows:

Product Model	Enablement Key	Disablement Key
Xerox® VersaLink™ C405	*3002452891	*3002452890
Xerox® VersaLink™ C400	*3006452891	*3006452890
Xerox® VersaLink™ B405	*3003452891	*3003452890
Xerox® VersaLink™ B400	*3007452891	*3007452890
Xerox® VersaLink™ C7020/C7025/C7030	*3014452891	*3014452890
Xerox® VersaLink C7000	*3015452891	*3015452890
Xerox® VersaLink C505/C605	*3016452891	*3016452890
Xerox® VersaLink C500/ C600	*3017452891	*3017452890
Xerox® VersaLink™ B605/B615	*3020452891	*3020452890
Xerox® VersaLink™ B600/B610	*3021452891	*3021452890
Xerox® WorkCentre 6515	*3005452891	*3005452890
Xerox® Phaser 6510	*3008452891	*3008452890
Xerox® VersaLink™ B7025 / B7030 / B7035	*3004452891	*3004452890
Xerox® C8000 / C9000	*3023452891	*3023452890

3. Scan to email (Gmail)

Addressed a scan to email (GMAIL) issue that could result in error 027-773 or 016-781 when the scan job consisted of multiple pages.

4. Faxing of 8.5X11 LEF

Fax send size detection issue where a LEF 8.5X11 sheet may be detected as 11X17 has been resolved.

5. IPsec enabled in Windows 10 Client

When IPsec is enabled, a Windows 10 client is now able to upgrade the printer.

Product Firmware Release xx.42.1

This is a General Release. For more information on other features, refer to the User Manuals and the System Administration Guides on Xerox.com.

1. Improved existing Audit Log Events

Information about security settings in the device's Audit Log have been improved to include the name of the logged in user who changed the setting, identify when a security setting has been enabled or disabled, and identify what the final setting of the feature is.

2. Remote Control Panel

The Remote Control Panel feature is a way to gain access remotely into the device's Local UI. This feature can help the administrator troubleshoot the device from their PC. The Remote Control Panel can also be used to train users or simply walk them through a workflow. The Remote Control Panel feature is accessed from the Embedded Web Services (EWS). Simply open the Embedded Web Services for the device on your computer by entering the device IP address in the address bar of your web browser and select [Enter]. By default, this feature is disabled. Please refer to the System Administrator Guide located on Xerox.com for instructions on how to enable the feature. If the Remote Control Panel icon is not immediately visible after upgrade, perform a browser hard refresh (refer to instructions for your specific browser)

Note: This feature is available on all products except Phaser 6510. More information can be found in the System Administrator Guide located on Xerox.com.

3. Additional Language Support (Ukrainian and Croatian)

Additional language support for Ukrainian and Croatian in the Walk-up UI and the WebUI

4. Server Fax

Server Fax is now supported. Server fax allows you to send a fax over a network to a fax server. The fax server sends the fax to a fax machine over a phone line. Server fax supports FTP, SFTP, SMB, SMTP for transport types.

5. Secure Scanning Workflows

Secure scanning and browsing is added using the Secure FTP (SFTP) protocol (also referred to as SSH (Secure Socket Shell) File Transfer Protocol). SFTP ensures that data is encrypted and transferred securely over the network. SFTP support is added to the Scan To App for Browsing, Scan using Address Book Contacts, Server Fax, and EIP Scan Templates/Tickets, Scan Template Pool Repository, and Scan File Repositories.

6. Show Supported Media Sizes

This release adds the ability to show and select from the available media sizes from tray 1, improved from the existing state of only allowing for Auto Select or Custom sizes.

7. Device Alert Sounds

This release adds support for remotely configuring and managing the device Alert sounds. This includes granular controls for enable/disable of sounds as well as various audible functions in the device such as mobile connections, job completion, UI touches, logins, errors, and fax processing and ring tones. Additional details can be found in the System Administrator Guide located on Xerox.com.

8. System Alert Notifications for Firmware Updates

This release improves the software update notification system in place on VersaLink devices, adding top level UI notifications when the device detects that a firmware update is available.

9. Displaying the IPv4 Address on the Home Screen

This release adds support for displaying the device's IPv4 address on the home screen of the local UI. Additional details can be found in the System Administrator Guide located on Xerox.com.

Product Firmware Release xx.35.32

1. Enablement of Server Name Indication (SNI) on Versalink

Enablement of Server Name Indication (SNI) on Versalink as required by connector applications (DropBox, OneDrive, Office365, Blackboard, @PBX APP, @PrintByXerox).

Note: Enabled by default, no user interface to enable/disable.

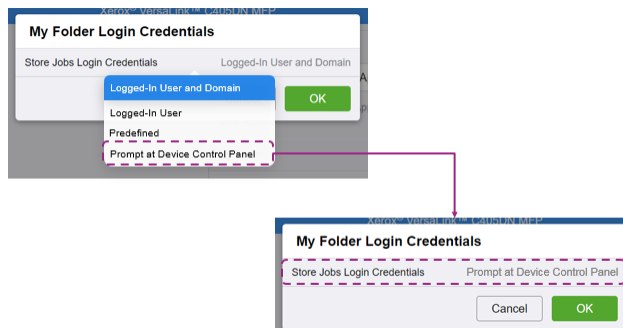
2. Prompt at Device Control Panel

Prompt at Device Control Panel feature is now available for a User to enter when scanning to their Home Folder (My Folder).

- Prompt at Device Control Panel Setup

Go to **Apps, Scan To, My Folder Login Credentials**

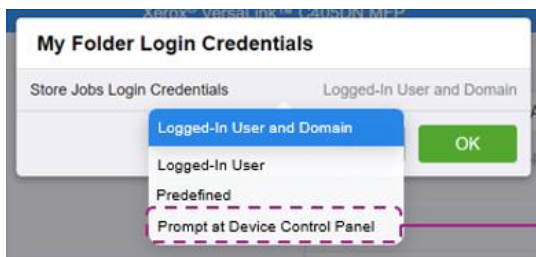
Select Prompt at Device Control Panel as shown below. Select OK.



- When a User now performs a **Scan To Home** or **My Folder job** they will be prompted for login credentials as shown below. Password must be input for every scan.



Note: All translations of the Prompt at Device Control panel feature are not 100% correct. However the Prompt at Device Control panel selection will always be the bottom selection in the My Folder Login Credentials pulldown menu as shown below.



3. Print Configuration reports as Admin Under Smart Card Authentication

From the VersaLink front panel, "admin" users are now able to print Information and Support reports even when smart card Authentication is enabled.

Product Firmware Release xx.35.1

1. Email addresses containing apostrophe in name

Fixed the issue to populate the email address in the 'To' field of users with an apostrophe in their name while using LDAP search at the printer control panel.

2. Fault 018-505 SMB-DOS Protocol error with Scan to Home & CAC

Scan to Home no longer fails with a 018-505 SMB-DOS Protocol Error when a DNS PTR Record does not exist for the destination Server that houses the CAC/Smartcard User's Home Directories.

Product Firmware Release xx.34.1

1. Error message 016-404 displayed after 802.1x authentication renewal

The problem causing this customers occurrence of fault 016-404 after 802.1x authentication renewal has been fixed.

2. XML Configuration Report translate into international languages.

When the device Local UI language is changed, the XML Configuration Report will mirror the Local UI language. The XML Configuration Report is accessible to System Administrators at the bottom of the Web UI Home screen page. The Configuration Report is in XML format that can be easily viewed using any XML viewer such as Microsoft XML Notepad, a direct Microsoft download at <https://www.microsoft.com/en-us/download/confirmation.aspx?id=7973>.

3. Changed Fax Forward setting when convenience authentication enabled.

When convenience authentication is enabled, Fax Forwarding settings can now be set and saved properly from the local user interface.

4. Logged in user unable to delete their own jobs from LUI

A user logged with a convenience authentication system can now delete their own jobs from LUI. Once the user logs in, navigates to the applications print screen and releases their job to the printer job queue, the delete button is now operational.

Product Firmware Release xx.33.1

1. Google Cloud Print does not require a restart to freshen the jobs queue

Once Google Cloud Print is installed and registered, printer remains online. Machine will print jobs as they are queued on the printer. No restart is required to continue refreshing the printer queue on device.

2. Display performance on Local UI when searching the Address Book

Address book will no longer display "search failed" as letters are entered when the device receives a large number of results.

3. Caveat: USB may not be recognized on Win7.x/8.x after upgrade

A device connected to a PC running Windows 7 or 8 with a USB cable may experience an issue of the device not being recognized by the PC. This issue is not expected to occur on PCs running Windows 10.

After upgrading to the release, the PC may need to update the USB driver and reassign it to the USB Composite Device driver.

Customers may check if this issue is being seen on their Windows 7.x/8.x workstations by following these steps:

1. Open [Control Panel] on the Windows 7.x/8.x Workstation
2. Customers can determine if their PC has this issue by checking the Universal Serial Bus controllers section of Device Manager
3. Depending on your version of Windows, Control Panel is usually available from the [Start Menu] or [Apps] Screen. Otherwise, follow the notes below depending upon the operating system used.

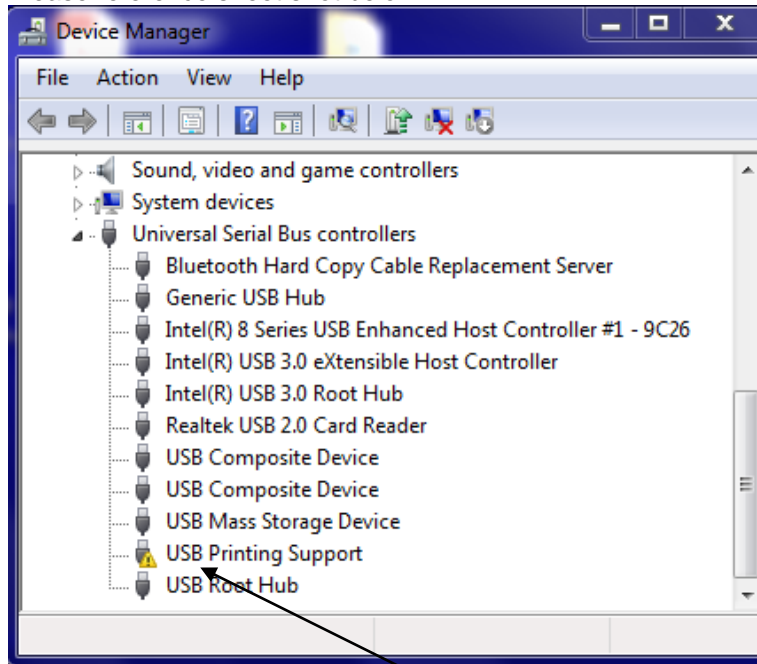
Note #1: Windows 8.x → In Windows 8, tap or click on the **Hardware and Sound** link. You could also jump right to Device Manager through the Power User Menu and not have to go through Control Panel.

Note #2: Windows 7.x → In Windows 7, look under [System]

4. Select the **[Hardware]** tab, and then click the **[Device Manager]** button.

With Device Manager now open, you can now view the list and select [Universal Serial Bus controllers] to identify if the problem is being seen on the Windows Workstation.

Please reference sheet shot below:



Note: Customers who have a **Yellow Warning!** next to the USB Printing Support will need to Right Click on the USB Printing Support line and select Update Driver Software.

Product Firmware Release xx.31.81

1. USB Scanning added for Versalink A4 MFP devices

This change allows users the ability to scan directly to a PC or Mac when connected to the device via USB cable. It requires the new scan drivers that are currently available here:

[Windows Scan driver](#)

[Mac Scan Driver](#)

2. Cloning Webservice

VersaLink devices will now accept clone files from CentreWare Web via a Cloning Webservice with Administrator credentials. This CWW functionality is available in the CWW release 6.0.6 or higher which can be downloaded from Xerox.com.

NOTE: This functionality should be used with CentreWare Web Release 6.0.6 or higher.

3. XML Configuration Report

VersaLink device Administrators will be able to download the Configuration Report in XML format. This capability is on the WebUI under Home, Download Configuration Report. NOTE: XML Notepad can be used for viewing the XML Configuration Report. A direct Microsoft download link is below:

<https://www.microsoft.com/en-us/download/confirmation.aspx?id=7973>

4. WPA2 - KRACK Vulnerability Addressed

The serious weaknesses in WPA2-supplement, a protocol that secures all modern protected Wi-Fi networks, has been identified and fixed in this release. No longer can an attacker exploit these weaknesses using key reinstallation attacks (KRACKs) to the Xerox Printers.

Product Firmware Release xx.21.41

1. ThinPrint

ThinPrint is a Third Party solution that saves network bandwidth by allowing print data to be compressed at the server and decompressed at the Print device before being printed out on a printer. The ThinPrint solution also supports print data encryption prior to sending to the print device. Xerox has added the ability to accept this compressed (and encrypted if configured) print data, process the Thin Print data, and print.

Note: Xerox devices must be equipped with a hard drive or solid-state drive to utilize the ThinPrint feature.

ThinPrint WebUI



Once the ThinPrint Protocol is enabled, the Admin has access to the settings below. The port must be enabled. The default port number for ThinPrint communication is 4000.

Note: Although a different port number can be configured. It is important not enter a port number that is already in use.

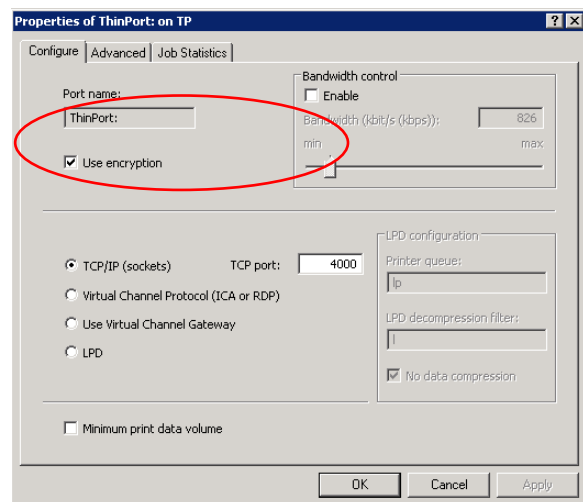
The screenshot shows the 'ThinPrint' configuration dialog box. It contains the following fields and controls:

- Port:** A dropdown menu with a checkmark icon and a list icon.
- Port Number:** A text input field with the value '4000' and a range indicator '1-65535'.
- TBCP Filter:** A toggle switch with a list icon.
- Connection Timeout:** A text input field with the value '300' and a range indicator '1-65,535 Seconds'.
- Packet Size:** A text input field with the value '64000' and a range indicator '200-64,000 Bytes'.
- AutoConnect:** A section header.
- Printer Class:** A text input field with the value 'versali'.
- Buttons:** 'Cancel' and 'OK' buttons.

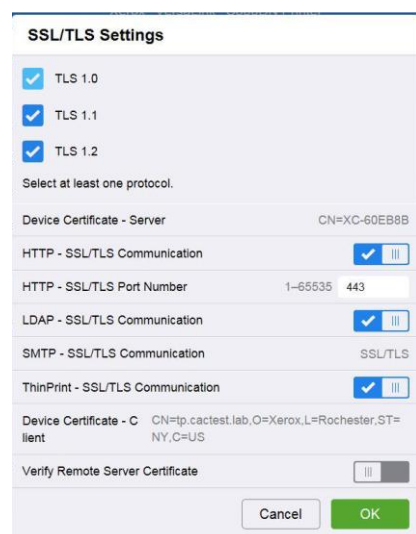
ThinPrint requires a certificate to be loaded on the device when running with TLS encryption. This is located in System Security SSL/TLS Settings

Note: The ThinPrint Engine/Server output queue and the Xerox device ThinPrint settings must both be set to TLS encryption for print jobs to be encrypted (see more below).

ThinPrint Server Settings



ThinPrint Device Settings



Caveats:

- Unencrypted print jobs from the server will not be accepted by ThinPrint protocol when TLS encryption is enabled on the print device.
- Cloning of the ThinPrint settings is not supported.
- Use of MIBS / OID string commands for ThinPrint settings is not supported.
- Audit Logging of the ThinPrint enablement / configuration is not supported.
- Thin Print may require the use of TLS 1.0 for encrypted job communication.
- Not applicable to Xerox® Phaser® 6510, Xerox® WorkCentre® 6515

2. Auto-populate the realm on walk-up UI

This release will automatically populate the default realm for walk-up users authenticating with Kerberos or SMB, allowing other pre-configured realms to be selected from a menu on the local user interface. The preconfigured menu will hold up to 50 Kerberos realm names or 5 SMB realm names which can be populated through the Authentication setup menu in the Embedded Web Server.

Note: An error message will appear on the walk-up UI if a user enters their fully qualified (username@realm) instead of just their username.

Not applicable to Xerox® Phaser® 6510, Xerox® WorkCentre® 6515

3. Eliminate thumbnail on fax confirmation sheet

The key codes below provide the ability to turn on/off the fax image that is printed on the fax confirmation sheet. The fax image is printed on the confirmation sheet by default. When the “Enablement Key” is applied, the faxed image will be suppressed. The “Disablement Key” will restore the default condition, displaying the fax image.

Feature Key Instructions:

1. On the device’s Embedded Web Server select System-> Security-> Feature Enablement
2. Enter correct enable/disable code (include the * character)

The Feature keys are as follows:

Product Model	Enablement Key	Disablement Key
Xerox® VersaLink® B405	*3002333081	*3002333080
Xerox® VersaLink® C405	*3003333081	*3003333080
Xerox® VersaLink® B7025/30/35	*3004333081	*3004333080
Xerox® VersaLink® C7020/25/30/35	*3014333081	*3014333080
Xerox® WorkCentre® 6515	*3005333081	*3005333080

4. Remove embedded web server support for 3DES cipher suite (Sweet32)

Sweet32 is the name of an attack that takes advantage of design weaknesses in a cipher known as 3DES, or Triple-DES. Fortunately, successfully carrying out the TLS variant of the Sweet32 attack requires a very particular set of capabilities on the part of the attacker. The attacker needs to keep the victim on the web page for days, in order to execute a practical attack; researchers found that up to 785 GB of data transfer is required.

Xerox has removed this cipher from the web server components of these products, removing the possibility of an attack via the embedded web interface.

5. Default output tray setting for copy job

This feature addresses an issue for devices with the optional Office Finisher LX installed. Copy jobs without finishing options selected were limited to output the job to the Center Output Tray where offsetting cannot be performed. A new Admin accessible setting is available on the Embedded Web Server (EWS) to default copy job output to the finisher tray. This provides the ability to offset the sets with or without finishing options selected.

To change the setting:

Open EWS of the device and log in as admin.

Select Apps > Copy

Select General Settings and Policies

Select Output Destination

Selections are “Center Output Tray” (default) or “Right-Side Output Tray” (finisher).

Figure 1: Output Destination shown when optional **Office Finisher LX** is installed.

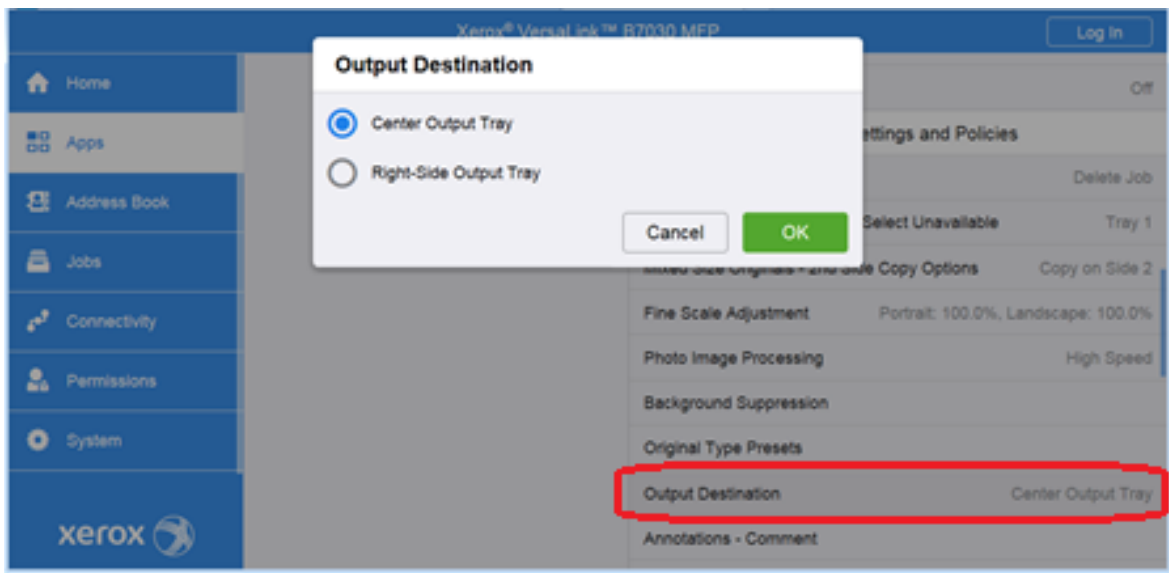
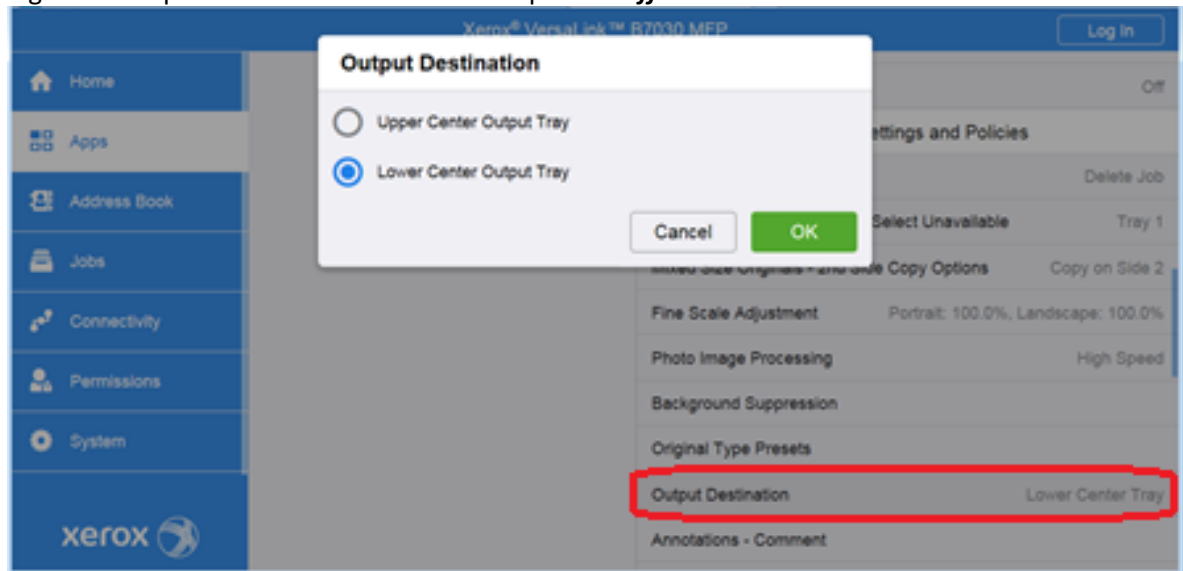


Figure 2: Output Destination shown when optional **Office Finisher LX** is not installed.



Not applicable to Xerox® Phaser® 6510, Xerox® WorkCentre® 6515

6. One-Touch Feature Enhancement

This update expands the capabilities of One Touch features, allowing users to create, edit, and share one-touch “apps” that save and simplify complicated or lengthy workflows that customers may need to do frequently. Once created this app will appear and behave similarly to native device apps and functions. Creation of one-touch apps is simple, with a new option presented within app menus that allow for settings and control for a function to be saved. Once saved, the new one-touch app appears at the LUI like other native functions, and can be edited later if desired. One-touch apps can be shown for all users, user groups, or just the creator of the one touch app. This app can be cloned and shared, and supports personalization and customization.

Not applicable to Xerox® Phaser® 6510, Xerox® WorkCentre® 6515

7. Personal Favorites

This update adds enhancements to the personalization and customization functions that allow users to customize and save individual application settings and contacts to individual user accounts. This allows users to streamline and customize their user experience by saving frequently used options, hiding unused featured and functions, and providing an overall more efficient streamlined user experience. Frequently used contacts and destinations can be prioritized and saved, specific to the individual user. With the addition of one touches, and the already present UI customization and personalization options, this provides a best in class user experience for these devices.

8. SNMPv3 FIPS 140-2 mode support

FIPS 140-2 approved security protocols have been added to SNMPv3 enabling its use in in FIPS 140-2 mode without an exception. This enhancement provides an overall improvement to device security and management compatibility within secure environments.

Not applicable to Xerox® Phaser® 6510, Xerox® WorkCentre® 6515

9. Simultaneous HTTP and HTTPS Support

HTTPS connectivity is now available, using default, self signed certificates without a user having to enable and configure HTTPS, similar to operation of AtlaLink devices. This will allow HTTPS connections, as well as services and functions that depend on and require HTTPS functionality to work seamlessly without the extra step of enabling HTTPS and configuring certificates. Devices will still have the ability to enforce HTTPS ONLY connections by disabling insecure HTTP.

© 2021 Xerox Corporation. All rights reserved. Xerox® and Xerox and Design® and VersaLink® are trademarks of Xerox Corporation in the United States and/or other countries. BR22773

Other company trademarks are also acknowledged.

Document Version: 1.0

