



**Fier® EXP6000/EXP5000 Color Server**  
SERVER & CONTROLLER SOLUTIONS



## Printing from Mac OS

© 2005 Electronics for Imaging, Inc. The information in this publication is covered under *Legal Notices* for this product.

45049032

15 March 2005

# CONTENTS

<b>INTRODUCTION</b>	5
Terminology and conventions	6
About this manual	7
User software	7
Using Fiery WebTools Installer	8
System requirements	8
<b>SETTING UP PRINTING ON MAC OS 9</b>	9
Installing Mac OS 9 printer drivers and printer description files	10
Setting Up the Fiery EXP6000/EXP5000 on Mac OS 9	11
<b>SETTING UP PRINTING ON MAC OS X</b>	13
Installing Mac OS X printer drivers and printer description files	14
Setting up the Fiery EXP6000/EXP5000 on Mac OS X	15

<b>PRINTING FROM MAC OS 9</b>	18
<b>Printing from applications with Mac OS 9</b>	19
Selecting the Fiery EXP6000/EXP5000 in the Chooser	19
Setting print options and printing from Mac OS 9	20
<b>Defining custom page sizes from Mac OS 9</b>	24
<b>PRINTING FROM MAC OS X</b>	26
<b>Printing from applications with Mac OS X</b>	27
Setting print options and printing from Mac OS X	27
<b>Defining custom page sizes from Mac OS X</b>	32
<b>Enabling Two-Way Communication</b>	34
<b>INDEX</b>	37





## INTRODUCTION

This manual describes how to install printer drivers and printer description files for the Fiery EXP6000/EXP5000 Color Server, and how to set up printing from Mac OS 9 and Mac OS X computers. It also describes how to print to the Fiery EXP6000/EXP5000. For information about setting up network servers and clients to use the Fiery EXP6000/EXP5000 Color Server, see *Configuration and Setup*. For general information about using the digital press, your computer, application software, or network, see the documentation that accompanies those products.

The Fiery EXP6000 supports the DocuColor 6060. The Fiery EXP5000 supports the DocuColor 5252/2060/2045.

## Terminology and conventions

This manual uses the following terminology and conventions.

Term or convention	Refers to
Aero	Fiery EXP6000/EXP5000 (in illustrations and examples)
Digital press	DocuColor 6060/5252/2060/2045
Fiery EXP6000/EXP5000	Fiery EXP6000/EXP5000 Color Server
Titles in <i>italics</i>	Other books in this documentation set
	Topics for which additional information is available by starting Help in the software
	Tips and information
	Important information
	Important information about issues that can result in physical harm to you or others

The Fiery EXP6000/EXP5000 includes support for Fiery WebTools, which allows you to download printer drivers and printer description files to your desktop for installation on your Apple Mac OS computer.

## About this manual

This manual covers the following topics:

- Installing printer files on Mac OS computers
- Setting up printing connections on Mac OS computers
- Printing from Mac OS computers

## User software

The User Software CDs provide the following Fiery EXP6000/EXP5000 user software.

Adobe PostScript Printer Driver	Allows you to print to the Fiery EXP6000/EXP5000 from Mac OS computers. The printer driver also supports Fiery EXP6000/EXP5000 and PostScript 3 features.
PostScript Printer Description (PPD/Plugin) file	For use with the PostScript printer driver that allows the Fiery EXP6000/EXP5000 to appear in the Print and Page Setup dialog boxes of popular applications. The Fiery EXP6000/EXP5000 PPDs provide information about the digital press to your application and printer driver.
PageMaker PPD files	Allows you to print to the Fiery EXP6000/EXP5000 from Adobe PageMaker. You must install the appropriate PPD in PageMaker. For instructions, see the documentation that accompanies PageMaker.
PostScript fonts	PostScript screen and printer fonts that correspond to the PostScript printer fonts installed on the Fiery EXP6000/EXP5000. For a complete list of PostScript fonts installed on the Fiery EXP6000/EXP5000, see the Fiery Downloader, described in <a href="#">Utilities</a> .

## Using Fiery WebTools Installer

You can install PostScript printer drivers and printer description files from the User Software CD or directly from the Fiery EXP6000/EXP5000 with the WebTools Installer.

---

### TO DOWNLOAD PRINTER DRIVERS WITH THE WEBTOOLS INSTALLER

- 1 **Start your Internet or intranet browser and enter the DNS name or IP address of the Fiery EXP6000/EXP5000.**

- 2 **Select a login level, type a password, if required, and then click OK.**

No password is required to log on as a guest. If the administrator has configured guest access, any user has full access to the WebTools Installer while logged in as a guest.

- 3 **Click Installer.**

- 4 **Click the link for the printer drivers that you want to install (Printer Files for Mac OS 9 or Printer Files for Mac OS X).**

A folder named Printer Driver is downloaded to your desktop in a BinHex-encoded, compressed format. If your Internet browser is equipped with an expander utility, such as StuffIt Expander, the folder decodes and decompresses automatically.

If the Printer Driver folder does not automatically decode and decompress, start the utility that performs that function.

- 5 **Install the appropriate printer driver for your operating system.**

<b>For instructions on installing the printer driver for</b>	<b>See</b>
Mac OS 9	<a href="#">“Installing Mac OS 9 printer drivers and printer description files” on page 10</a>
Mac OS X	<a href="#">“Installing Mac OS X printer drivers and printer description files” on page 14</a>

## System requirements

For detailed system requirements, see [Welcome](#), provided in your media pack.



## SETTING UP PRINTING ON MAC OS 9

To set up the Fiery EXP6000/EXP5000 as a PostScript printer on a Mac OS 9 computer, install the PostScript printer driver and the printer description file that corresponds to your digital press. The PostScript printer driver and printer description files are provided on the User Software CD. Printer drivers provide a way to communicate information about print jobs between your applications, the Fiery EXP6000/EXP5000, and any other PostScript printer connected to your computer.

Follow the procedure on [page 10](#) to install printer files from the User Software CD.

**NOTE:** The following PostScript printer drivers are provided for the DocuColor 6060/5252/2060/2045. When installing the printer driver, choose the appropriate printer driver for the digital press running in your networked environment. To print to the DocuColor 6060, select Fiery EXP6000. To print to the DocuColor 5252/2060/2045, select Fiery EXP5000.

## Installing Mac OS 9 printer drivers and printer description files

The following instructions are for Mac OS 9 and Mac OS X Classic. The term “Mac OS 9” refers to Mac OS 9 and Mac OS X Classic. For the supported versions, see the system requirements section of [Welcome](#).

The User Software CD (1 of 2) contains the following software for Mac OS 9 (see OS9:English:Printer Driver folder).

- **AdobePS Installer:** Installs the PostScript Printer Description files (PPDs) necessary to print from Mac OS 9.
- **Printer Descriptions:** Printer description files that are installed by the AdobePS Installer. You do not need to open these folders or install them manually on your computer. The appropriate files are installed by the AdobePS Installer. If you must install the files manually, copy them to System Folder:Extensions:Printer Descriptions.

---

### TO INSTALL THE ADOBE POSTSCRIPT PRINTER DRIVER AND PRINTER DESCRIPTION FILE FOR MAC OS 9

- 1 **Quit all open applications.**
- 2 **On the User Software CD, open the English:Printer Driver folder.**
- 3 **Double-click the AdobePS8.8.0 Installer icon.**
- 4 **Follow the on-screen instructions.**

The AdobePS Installer installs the Adobe PostScript printer driver and the printer description files that correspond to the Fiery EXP6000/EXP5000.

**NOTE:** If you operate the Fiery EXP6000/EXP5000 in a copy shop, quick print shop, or service bureau, provide your customers with copies of the printer driver, printer description files, ICC profiles for printing images, and any relevant documentation. This ensures that the jobs they create and print to files are properly formatted for printing to the Fiery EXP6000/EXP5000.

## Setting Up the Fiery EXP6000/EXP5000 on Mac OS 9

On Mac OS 9, set up the Fiery EXP6000/EXP5000 in the Chooser, using the AppleTalk protocol. This section describes how to set up the Fiery EXP6000/EXP5000 with the AdobePS printer driver.

You must also configure the Fiery EXP6000/EXP5000 for the options installed on the digital press to allow the Fiery EXP6000/EXP5000 to take advantage of the digital press options.

Installable option	Selections
GA Package	Not Installed, Fiery Graphic Arts Package, Fiery Graphic Arts Package, Premium Edition
Feeder	Not Installed, SFM (Fiery EXP6000), HCF (Fiery EXP5000)
Finishing Device Setup	Not Installed, HCS, HCSS, HCS Bypass, HCS - HCS, HCS - HCSS, HCS - HCS Bypass

**NOTE:** The Fiery Graphic Arts Package, Premium Edition is not supported in the Mac OS 9 printer driver. To use the features on Mac OS 9, you must send your job to the Hold queue and then override the job properties from EFI Command WorkStation. For more information, see [Utilities](#).

---

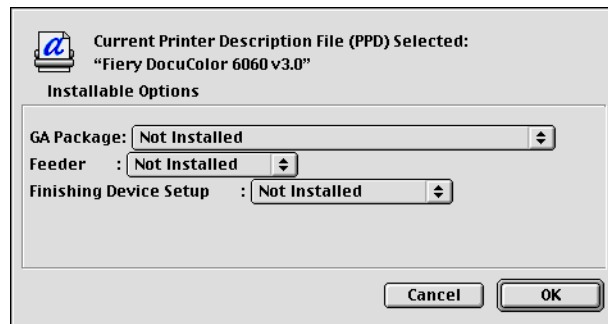
**TO SET UP THE FIERY EXP6000/EXP5000 IN THE CHOOSER**

- 1 Choose Chooser from the Apple menu.
- 2 Make sure AppleTalk is set to Active.
- 3 Click the AdobePS icon.
- 4 If your network is divided into zones, select the zone in which the Fiery EXP6000/EXP5000 is located.

The Fiery EXP6000/EXP5000 appears in the Select a PostScript Printer list in the form of <server name>\_<print connection>.

**NOTE:** Only the print connections that have been enabled in Setup (Print, Hold, and Direct) appear in the Chooser.

- 5 Select a Fiery EXP6000/EXP5000 connection from the Select a PostScript Printer list and click Create.
- 6 Select the correct printer description file for your printer and click Select.
- 7 In the Installable Options dialog box, choose the appropriate settings.



- 8 Click OK.

An icon (🖨️) appears to the left of the printer name, indicating that the printer has been matched with a PPD.

**NOTE:** Set up each print connection separately. Repeat the last two steps for all enabled connections.

- 9 Close the Chooser.

## SETTING UP PRINTING ON MAC OS X

To set up the Fiery EXP6000/EXP5000 as a PostScript printer on a Mac OS X computer, install the Adobe PostScript printer driver and the printer description files that correspond to your digital press. The PostScript printer driver and printer description files are provided on the User Software CD. Printer drivers provide a way to communicate information about print jobs between your applications, the Fiery EXP6000/EXP5000, and any other PostScript printer connected to your computer.

**NOTE:** The following PostScript printer drivers are provided for the DocuColor 6060/5252/2060/2045. When installing the printer driver, choose the appropriate printer driver according to the digital press running in your networked environment. To print to the DocuColor 6060, select Fiery EXP6000. To print to the DocuColor 5252/2060/2045, select Fiery EXP5000.

## Installing Mac OS X printer drivers and printer description files

The User Software CD (1 of 2) contains the following software for Mac OS X (see the OSX:Printer Driver folder):

- **OSX Installer:** Installs the PostScript Printer Description files (PPDs) and PPD plug-ins required to print from Mac OS X.
- **Language folders:** Printer description files that are installed by OSX Installer. You do not need to open these folders or install them manually on your computer. The appropriate files are installed by OSX Installer.

---

### TO INSTALL THE PRINTER DESCRIPTION FILES FOR MAC OS X

- 1 Quit all open applications.**
- 2 Make sure that the Printer Setup Utility (or Print Center), is not running on your computer.**

Printer Setup Utility (or Print Center) updates the list of available printers when it restarts. If a printer description file is added while Printer Setup Utility (or Print Center) is running, you cannot select the associated printer model until you restart.
- 3 Insert the User Software CD into the CD-ROM drive.**
- 4 Open the OSX:Printer Driver folder on the User Software CD.**
- 5 Double-click the OSX Installer icon to start installing the printer driver.**

**NOTE:** The PPD files are installed in the following locations:

**On an English system:** en.lproj under <Startup disk>:Library:Printers:PPDs:Contents:Resources

**On a non-English system:** de.lproj, es.lproj, fr.lproj, and it.lproj under <Startup disk>:Library:Printers:PPDs:Contents:Resources

If the PPD files are not successfully installed, manually copy the PPD files to the appropriate folder or folders.

- 6 Follow the on-screen instructions.**

The OSX Installer installs the printer driver files that correspond to the Fiery EXP6000/EXP5000.

- 7 When copying is complete, click Quit.**

## Setting up the Fiery EXP6000/EXP5000 on Mac OS X

After you install the printer driver files on Mac OS X, you must set up the Fiery EXP6000/EXP5000 in the Printer Setup Utility (or Print Center). This section describes how to set up the Fiery EXP6000/EXP5000.

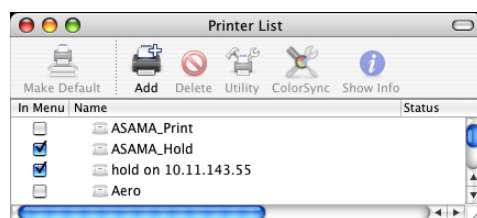
You must also configure the Fiery EXP6000/EXP5000 for the options installed on the digital press to allow the Fiery EXP6000/EXP5000 to take advantage of the digital press options. Configure the options manually, or for TCP/IP network connections, use the Two-Way Communication feature to configure the options automatically.

Installable option	Selections
GA Package	Not Installed, Fiery Graphic Arts Package, Fiery Graphic Arts Package, Premium Edition
Feeder	Not Installed, SFM (Fiery EXP6000), HCF (Fiery EXP5000)
Finishing Device Setup	Not Installed, HCS, HCSS, HCS Bypass, HCS - HCS, HCS - HCSS, HCS - HCS Bypass

### TO SET UP THE FIERY EXP6000/EXP5000 IN THE PRINTER SETUP UTILITY (OR PRINT CENTER)

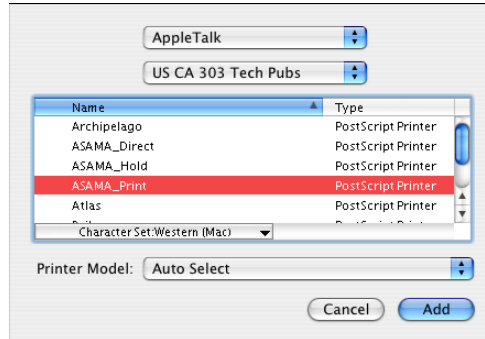
- 1 Choose Applications from the Go menu, open the Utilities folder, and start Printer Setup Utility (or Print Center).

The Printer List dialog box appears.

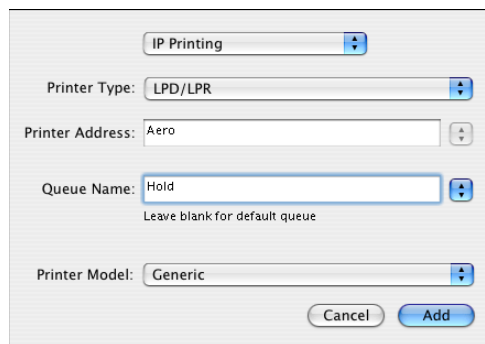


- 2 Click Add.
- 3 Choose AppleTalk or IP printing from the menu that appears.
- 4 For AppleTalk, choose the AppleTalk Zone and choose the name of the Fiery EXP6000/EXP5000.

If the zone is not listed as the Default Zone, or one of the Recent Zones, select AppleTalk Network, select the zone, and then click Choose. Proceed to [step 5](#).



For IP Printing, type the IP address or DNS name of the printer in the Printer Address field, and type the print connection (Print or Hold) in the Queue Name field.



- 5 For Printer Model, choose the appropriate manufacturer name or model, and then select the file for the Fiery EXP6000/EXP5000 PPD.**

If the manufacturer or model is not listed, choose Other and browse to the location of the PPD.

- 6 Click Add.**

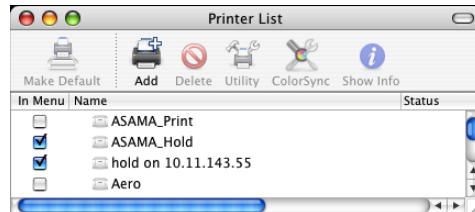
You are now ready to configure installable options for the Fiery EXP6000/EXP5000.



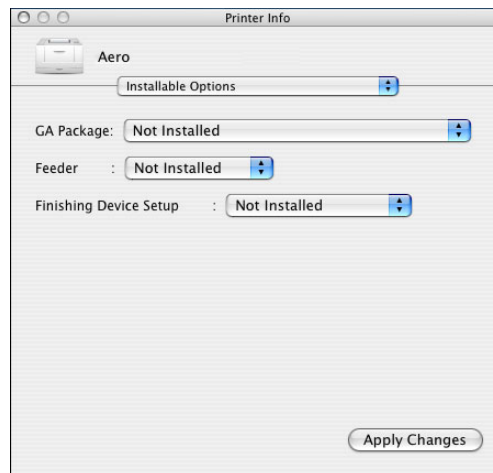
---

**TO CONFIGURE INSTALLABLE OPTIONS**

- 1 Choose Utilities from the Go menu, and start Printer Setup Utility (or Print Center).
- 2 Select your printer in the Printer List.



- 3 Choose Show Info from the Printers menu.
- 4 Choose Installable Options.



- 5 Select the appropriate settings.
- 6 Click Apply Changes.
- 7 Close the window.

## PRINTING FROM MAC OS 9

Print to the Fiery EXP6000/EXP5000 just as you would any other printer from any application. If you are using Mac OS 9 and later or Mac OS X Classic, select the Fiery EXP6000/EXP5000 as the current printer in the Chooser and print the file from within the application. In addition to this method, you can download files to the Fiery EXP6000/EXP5000 using Downloader (see [Utilities](#)), and print documents using Command WorkStation (see [Utilities](#)).

## Printing from applications with Mac OS 9

Before you print to the Fiery EXP6000/EXP5000 from applications, select the Fiery EXP6000/EXP5000 in the Chooser. Using the Adobe PostScript printer driver and the correct printer description file, you can control many Fiery EXP6000/EXP5000 printing features by specifying job settings from print dialog boxes.

To achieve optimal printing results from specific applications, see *Color Printing* and *Fiery Color Reference*.

### Selecting the Fiery EXP6000/EXP5000 in the Chooser

Before you print a job, select the Fiery EXP6000/EXP5000 as your printer.

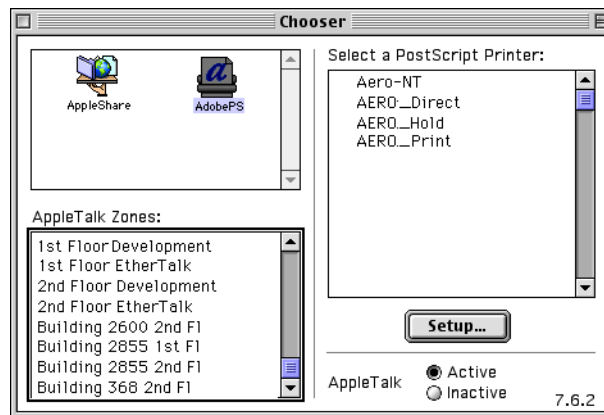
**NOTE:** For information about setting up the Fiery EXP6000/EXP5000 in the Chooser, see [page 12](#).

---

#### TO SELECT THE FIERY EXP6000/EXP5000 AS THE CURRENT PRINTER

- 1 Make sure the Fiery EXP6000/EXP5000 is connected to the network and turned on.
- 2 Choose Chooser from the Apple menu.
- 3 Make sure AppleTalk is set to Active.
- 4 Click the AdobePS icon.
- 5 If your network is divided into zones, select the zone in which the Fiery EXP6000/EXP5000 is located.

The names of all supported printers in the zone appear in the list on the right.



**NOTE:** If your system administrator has not enabled the connection to the Print queue or the Direct connection, the corresponding names do not appear in this list. For example, if an operator at your site controls the flow of print jobs from Command WorkStation, you may be able to print only to the Hold queue. For more information about enabling print connections, see *Configuration and Setup*.

- 6 Select the Fiery EXP6000/EXP5000 by <Server Name>\_<print connection> from the “Select a PostScript Printer” list.
- 7 Close the Chooser.

The Fiery EXP6000/EXP5000 remains selected as the current printer until you select a new printer in the Chooser.

## Setting print options and printing from Mac OS 9

In Mac OS applications, print options are set from both the Page Setup dialog box and the Print dialog box. For information about specific print options, see [Print Options](#).

**NOTE:** Some default print options are set by the administrator during Setup. For information about the current server default settings, contact the administrator or operator.

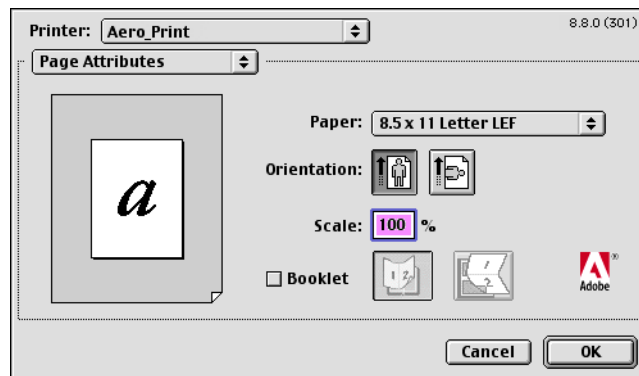
**NOTE:** Not all Fiery EXP6000/EXP5000 print options are supported in the Mac OS 9 printer driver. To use these features when printing from Mac OS 9, you must send your job to the Hold queue and then override the job properties from Command WorkStation. For more information, see [Utilities](#).

---

### TO SET PRINT OPTIONS AND PRINT FROM MAC OS 9

- 1 Open a file and choose Page Setup from the application’s File menu.
- 2 In the dialog box that appears, choose Page Attributes.

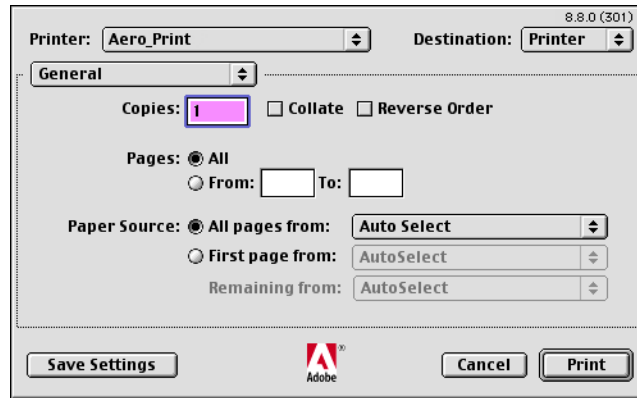
Select the Fiery EXP6000/EXP5000 as your printer.



**NOTE:** Page Setup dialog boxes vary across applications.

- 3 Select the Page settings for your print job.
- 4 Click OK.
- 5 Choose Print from the application’s File menu.

- 6 Choose the Fiery EXP6000/EXP5000 as your printer and specify settings for the print options displayed.



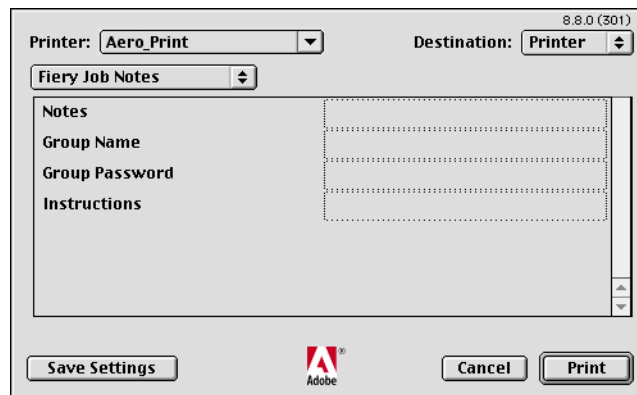
**NOTE:** Print dialog boxes vary across applications.

From the Paper Source menu, choose the paper tray for the job.

The Paper Source selection is valid for the current job only.

**NOTE:** If paper loaded in the selected tray is a different size, orientation, or media type than that of the job you are sending, the Fiery EXP6000/EXP5000 displays an error message and the job fails to print. Load the correct paper into the selected tray or cancel the job.

- 7 Choose Fiery Job Notes.



Type user and job identification information for managing purposes, or whatever information is required at your site.

- 8 Type an account name in the Group Name field.

The Group Name appears in the Job Log. The account name is defined by your administrator for managing purposes. Check with the administrator for the account name.

**9 Type a password in the Group Password field.**

The Group Password appears in the Job Log, but it is encrypted. The password is defined by your administrator for managing purposes. Consult your administrator for the password.

When the account name and password you entered match those defined by the administrator, your job is printed. Otherwise, an error is generated, and your job is placed in the Printed queue.

The administrator or operator can edit the Group Name and Group Password from the Command WorkStation Properties dialog box.

For more information about Command WorkStation, see [Utilities](#).

**NOTE:** Group Name and Group Password options are not available when printing to the Direct connection.

**10 Type information in the Notes field.**

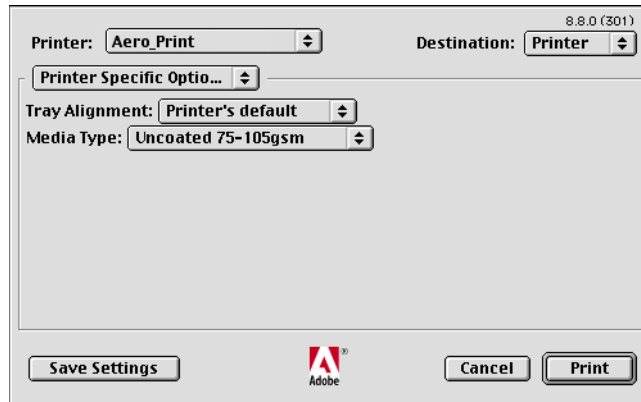
The information you type in the Notes field can be viewed by the operator in Command WorkStation and also appears in the Job Log. It cannot be edited or erased by the operator.

**11 In the Instructions field, type instructions to the operator about the job.**

These instructions can be displayed in Command WorkStation, but do not appear in the Job Log. These instructions *can* be edited by the operator.

**12 Choose a category from the drop-down list to set print settings for your job.**

- 13 For each selection in the drop-down list, specify settings and click Save Settings.



These print options are specific to the Fiery EXP6000/EXP5000 and the digital press. You may have to scroll to see all the options. They override settings in Fiery EXP6000/EXP5000 Printer Setup, but can be changed from Command WorkStation.

If you choose Printer's default, the job prints according to the settings specified in Setup.

For more information about these options and overrides, see [Print Options](#).

Some print options that are selectable from an application or Adobe PS printing features are similar to print options that are specific to the Fiery EXP6000/EXP5000 and the digital press. In these cases, use the print options specific to the Fiery EXP6000/EXP5000 and the digital press. These options appear in the windows that you select from the drop-down list, in the selections from Fiery Job Notes to Printer Specific Options. The application or Adobe PS printer driver may not set up the file properly for printing on the Fiery EXP6000/EXP5000, resulting in unexpected printing errors and longer processing time.

**NOTE:** If paper loaded in the selected tray is a different size, orientation, or media type than that of the job you are sending, the Fiery EXP6000/EXP5000 displays an error message and the job will not print. You should then load the correct paper in the selected tray or cancel the job.

If you specify incompatible print settings, a dialog box may appear. Follow the on-screen instructions to resolve the conflict.

- 14 Click Print.

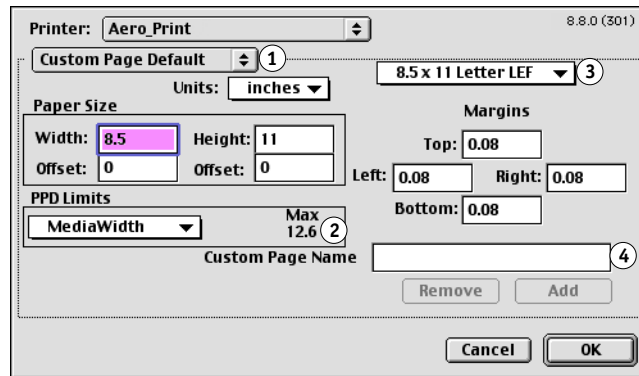
## Defining custom page sizes from Mac OS 9

With custom page sizes, you define page dimensions and margins. When you define a custom page size, you can use it from within an application without redefining it each time you print.

### TO DEFINE A CUSTOM PAGE SIZE

- 1 Choose Page Setup from the application's File menu.
- 2 For Paper, choose Custom.
- 3 Choose Custom Page Default from the drop-down list.
- 4 Type the page dimensions and margins.

- 1 Choose Custom Page Default
- 2 Limits for selected dimension
- 3 Custom page names
- 4 Type a custom page name



- 5 To view the minimum and maximum sizes, click the PPD Limits menu.

If you type invalid sizes, an error message appears. Click Cancel and type sizes specified within the PPD Limits.

- 6 To save this custom page size, type a name and click Add.

Saved custom page sizes appear in the menu of page sizes in the upper-right corner of the dialog box. To remove a saved custom page size, choose it from the menu and click Remove.

- 7 Click OK.



---

**TO EDIT A SAVED CUSTOM PAGE SIZE**

- 1 Choose Page Setup from the application's File menu.**
  - 2 Choose Custom Page Default.**
  - 3 Select the Custom Page Size name.**
  - 4 Edit the page dimensions and margins.**
  - 5 Click Add.**
  - 6 Replace the existing Custom Page name and click OK.**
- 

**TO PRINT A CUSTOM PAGE SIZE**

- 1 Choose Page Setup from the application's File menu.**
- 2 Choose Custom or the Custom Page Size name from the Paper menu.**
- 3 Click OK.**
- 4 Choose Print from the application's File menu.**

Specify your printing options.
- 5 Click Print.**

You can also define a new custom page size in the Custom Page Size dialog box when you print to the Fiery EXP6000/EXP5000. If you specify dimensions that match a particular regular page size, the Fiery EXP6000/EXP5000 processes the job as a regular page size job.

## PRINTING FROM MAC OS X

Print to the Fiery EXP6000/EXP5000 just as you would to any other printer from a Mac OS X application. Select a printer and print the file from within the application. In addition to this method, you can download files to the Fiery EXP6000/EXP5000 using Downloader (see [Utilities](#)), and print documents using Command WorkStation (see [Utilities](#)).

## Printing from applications with Mac OS X

Once you install the Fiery EXP6000/EXP5000 printer description files using the OSX Installer, you can print directly from most Mac OS X applications. For more information about installing printer description files with the OSX Installer, see [page 14](#).

To achieve optimal printing results from specific applications, see *Color Printing* and *Fiery Color Reference*.

## Setting print options and printing from Mac OS X

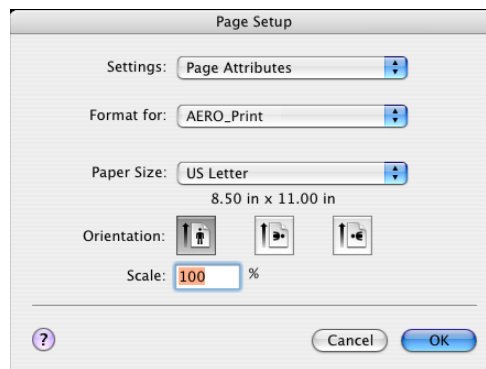
In Mac OS X applications, print options are set from the Page Setup dialog box and the Print dialog box. For information about specific print options, see *Print Options*.

**NOTE:** Some default print options are set by your administrator during Setup. For information about the current server default settings, contact your administrator or the operator.

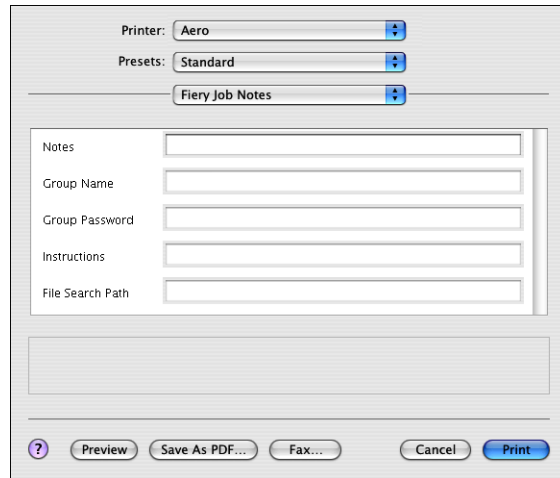
---

### TO SET PRINT OPTIONS AND PRINT FROM MAC OS X

- 1 Open a file and choose **Page Setup** from the application's **File** menu.
- 2 Choose **Page Attributes** for Settings and the **Fiery EXP6000/EXP5000** for Format for.



- 3 Select the **Page** settings for your print job.
- 4 Click **OK**.
- 5 Choose **Print** from the application's **File** menu.
- 6 Choose the **Fiery EXP6000/EXP5000** as your printer.

**7 Choose Fiery Job Notes. from the drop-down list.**

Type user and job identification information for managing purposes, or whatever information is required at your site.

**8 Type an account name in the Group Name field.**

The Group Name appears in the Job Log. The account name is defined by your administrator for managing purposes. Consult your administrator for the account name.

**9 Type a password in the Group Password field.**

The Group Password appears in the Job Log, but it is encrypted. The password is defined by your administrator for managing purposes. Consult your administrator for the password.

When the account name and password you entered match those defined by the administrator, your job is printed. Otherwise, an error is generated, and your job is placed in the Printed queue.

The administrator or operator can edit the Group Name and Group Password from the Command WorkStation Properties dialog box.

For more information about Command WorkStation, see [Utilities](#).

**NOTE:** Group Name and Group Password options are not available when printing to the Direct connection.

**10 Type information in the Notes field.**

The information you type in the Notes field can be viewed by the operator at Command WorkStation and also appears in the Job Log. It cannot be edited or erased by the operator.

**11 In the Instructions field, type instructions to the operator about the job.**

These instructions can be displayed in Command WorkStation, but do not appear in the Job Log. These instructions *can* be edited by the operator.

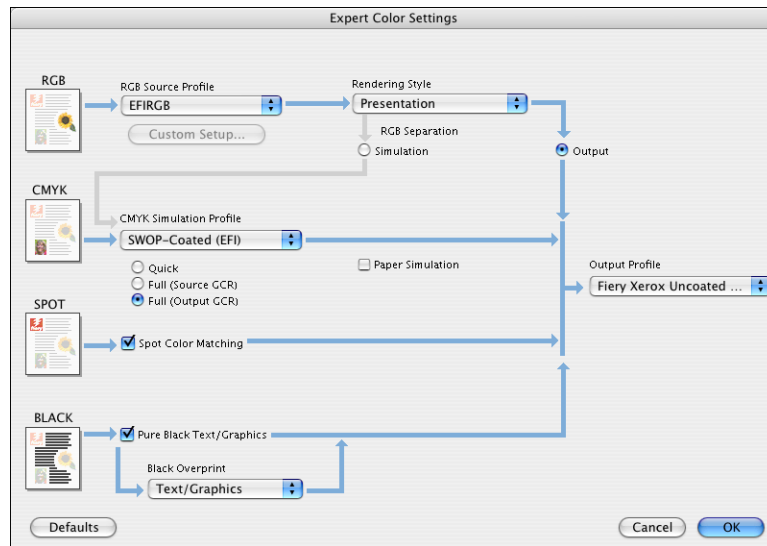
**12 Choose ColorWise from the drop-down list.****13 Specify color print options for the job.**

The screenshot shows a standard Mac OS X print dialog box. At the top, the 'Printer' is set to 'AERO\_Print' and 'Presets' is set to 'Standard'. Below these, a 'ColorWise' drop-down menu is visible. The 'Print Mode' section contains three radio buttons: 'Standard Color' (selected), 'Expert Color', and 'Grayscale'. To the right of these is an 'Expert Settings...' button. Below the radio buttons, there are two more settings: 'Substitute Colors' set to 'Off' and 'Combine Separations' set to 'Off'. Further down, the 'Two Way Communication' checkbox is checked, and the 'Printer Address' is '10.11.96.46', with a 'Configure...' button next to it. At the bottom of the dialog, there is a row of buttons: a help icon (?), 'Preview', 'Save As PDF...', 'Fax...', 'Cancel', and 'Print'.

**14 To use advanced color management features, such as Rendering Style, click Expert Settings.**

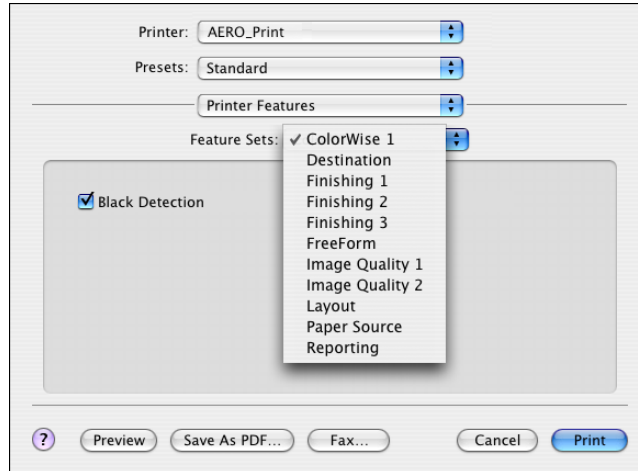
The Expert Color Settings dialog box appears.

**NOTE:** To display the EFI Fiery ColorWise settings from the Fiery EXP6000/EXP5000 in this dialog box, make sure that Two-Way Communication is enabled. To enable Two-Way Communication, see [page 34](#).



15 Specify the color settings for the print job and click OK.

- 16 Choose Printer Features to specify printer-specific options. Specify settings for each selection in the Feature Sets list.**



These print options are specific to the Fiery EXP6000/EXP5000 and the digital press. You must choose each Feature Set to see all the options. These options override settings in Fiery EXP6000/EXP5000 Printer Setup, but can be changed from Command WorkStation.

If you choose Printer's default, the job prints according to the settings specified in Setup.

For more information about these options and overrides, see [Print Options](#).

Some print options (including Soft Collate, Soft Reverse Order, and Manual Duplex) that are selectable from an application or the PostScript printer driver, are similar to the print options available in Printer Features. In these cases, specify the print option in Printer Features. The application or the PostScript printer driver may not set up the file properly for printing on the Fiery EXP6000/EXP5000, resulting in unexpected printing errors and longer processing time.

If you select an invalid setting or combination of settings when printing a document, no error message appears. For example, you may be able to select duplex printing on transparency media. Invalid settings and combinations are ignored by the Fiery EXP6000/EXP5000.

- 17 Click Print.**

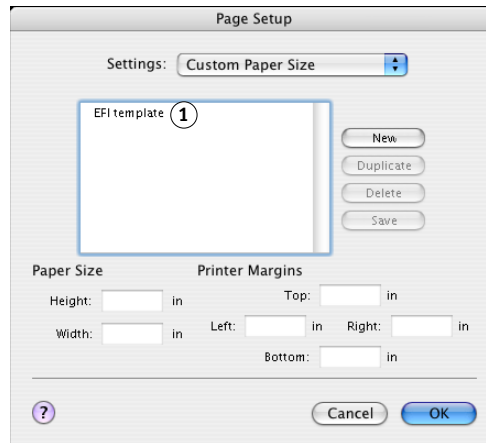
## Defining custom page sizes from Mac OS X

With custom page sizes, you define page dimensions and margins. After you define a custom page size, you can use it from within an application without redefining it each time you print.

### TO DEFINE A CUSTOM PAGE SIZE

- 1 Choose Page Setup from the application's File menu.
- 2 Choose Custom Paper Size from the Settings menu.

#### 1 Custom page names



- 3 Click New, type a name for the custom page size, and press Enter.
- 4 Type the page dimensions and margins.
- 5 Click Save.
- 6 Click OK to exit.

The custom page size you defined is added to the list of Paper Size selections in the Page Setup dialog box.



---

**TO EDIT A SAVED CUSTOM PAGE SIZE**

- 1 Choose Page Setup from the application's File menu.
- 2 Choose Custom Paper Size from the Settings menu.
- 3 Select the Custom Page Size name.
- 4 Edit the page dimensions and margins.
- 5 Replace the existing Custom Page name by clicking it.
- 6 Click Save.
- 7 Click OK to exit.

---

**TO DELETE A CUSTOM PAGE SIZE**

- 1 Choose Page Setup from the application's File menu.
- 2 Choose Custom Paper Size from the Settings menu.
- 3 Click the Custom Paper Size name.
- 4 Click Delete.
- 5 Click OK to exit.

---

**TO MAKE A COPY OF THE CUSTOM PAGE SIZE**

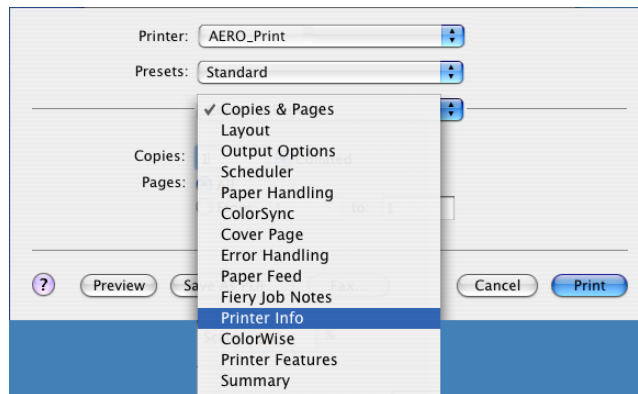
- 1 Choose Page Setup from the application's File menu.
- 2 Choose Custom Paper Size from the Settings menu.
- 3 Click the Custom Paper Size name.
- 4 Click Duplicate.
- 5 Click OK to exit.

## Enabling Two-Way Communication

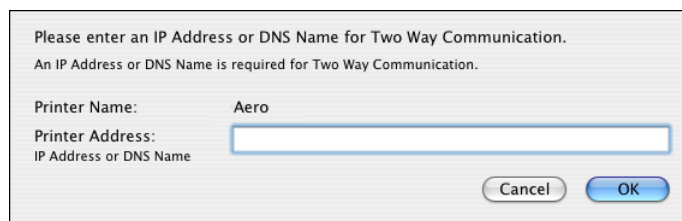
If you enabled a TCP/IP network, you can retrieve digital press status and ColorWise settings from the Fiery EXP6000/EXP5000 and display them in the printer driver using the Two-Way Communication feature. The digital press status includes the current paper and toner levels. The ColorWise settings can be set on the Fiery EXP6000/EXP5000 using EFI Fiery ColorWise Pro Tools. For more information about ColorWise print options, see [Color Printing](#).

### TO ENABLE TWO-WAY COMMUNICATION

- 1 Open a file and choose Print from the application's File menu.
- 2 Choose the Fiery EXP6000/EXP5000 as your printer.
- 3 Select Printer Info, or select ColorWise and select the Two-Way Communication option.



A dialog box appears requesting an IP address or DNS name.



- 4 Type the Fiery EXP6000/EXP5000 IP address or DNS name in the dialog box.

5 Click OK.

6 To update the digital press status in the Printer Info window, click Refresh.





# INDEX

## A

- Adobe PostScript printer driver,  
    *see* printer driver
- AdobePS Installer 10
- AppleTalk
  - connecting to Mac OS 9 11
  - connecting to Mac OS X 15
- AppleTalk connection, in Printer Setup  
    Utility (Print Center) 15

## C

- Chooser 11, 19
- ColorWise 29
- ColorWise options
  - updating automatically 34
- Command WorkStation
  - 18, 22, 26, 28
- custom page size
  - defining for Mac OS 9 24
  - defining for Mac OS X 32
  - printing with Mac OS 9 25

## D

- default print options 20, 27
- digital press status 34
- Direct connection 19

## E

- Expert Color Settings 29

## F

- Feature Sets 31
- Fiery Downloader 18, 26
- Fiery Job Notes 21, 28
- Fiery WebTools Installer 8

## G

- Group Name 21, 28
- Group Password 22, 28

## H

- Hold queue 19

## I

- installable options
  - specifying in Mac OS 9 12
  - specifying in Mac OS X 17
- Installer in Fiery WebTools 8
- installing
  - printer driver for Mac OS 9 10
  - printer driver for Mac OS X 14
- Instructions field 22, 29
- IP Printing, in Printer Setup Utility  
    (Print Center) 16

## M

- Mac OS 9
  - PPD 10
  - print options 20
  - printer driver installation 10
  - printer driver setup 11
- Mac OS X
  - PPD 27
  - print options 27
  - printer driver installation 14
  - printer driver setup 15
- Mac OS X Classic 10

## N

- Notes field 22, 28

## O

- OSX Installer 14, 27

## P

- Page Setup dialog box 20, 27
- Paper Source option 21
- PostScript fonts 7
- PostScript Printer Description file, *see* PPD
- PPD
  - Mac OS 9 10
  - Mac OS X 14, 27
  - overview 7
- Print Center 14, 15
- Print dialog box 20, 27

print options

Mac OS 9 20

Mac OS X 27

printer driver

downloading 8

installation, Mac OS 9 10

installation, Mac OS X 14

setup, Mac OS 9 11

setup, Mac OS X 15

Printer Features 31

Printer Setup Utility 14, 15

Printer's default 23, 31

## S

selecting a printer 19

## T

Two-Way Communication 34

## U

User Software CD 9, 13