



Fiery® EX4112/4127



Printing from Mac OS

© 2007 Electronics for Imaging, Inc. The information in this publication is covered under [Legal Notices](#) for this product.

45064019

17 August 2007

CONTENTS

INTRODUCTION	5
Terminology and conventions	5
About this document	6
User software	6
Downloading printer drivers using WebTools	7
Downloading printer drivers from the Fiery EX4112/4127	8
System requirements	8
SETTING UP PRINTING ON MAC OS X	9
Installing Mac OS X printer drivers and printer description files	9
Setting up the Fiery EX4112/4127 on Mac OS X	10
Configuring installable options	13
PRINTING UTILITIES	15
Printing from a USB device	15
Automatic printing	15
FTP printing	16
PRINTING FROM MAC OS X	17
Printing from applications with Mac OS X	17
Setting print options and printing from Mac OS X	17
Defining custom page sizes from Mac OS X	21
Enabling Two-Way Communication	23
INDEX	25

INTRODUCTION

This document describes how to install printer drivers and printer description files for the Fiery EX4112/4127, and how to set up printing from Mac OS X computers. It also describes how to print to the Fiery EX4112/4127. For information about setting up network servers and clients to use the Fiery EX4112/4127, see [Configuration and Setup](#). For general information about using the copier, your computer, application software, or network, see the documentation that accompanies those products.





The Fiery EX4112/4127 supports the Xerox 4112 and Xerox 4127.



For information about supported operating systems and system requirements, see [Welcome](#).

Terminology and conventions

This document uses the following terminology and conventions.

Term or convention	Refers to
Aero	Fiery EX4112/4127 (in illustrations and examples)
Copier	Xerox 4112 and Xerox 4127
Fiery EX4112/4127	Fiery EX4112/4127
Mac OS	Apple Mac OS X
Titles in <i>italics</i>	Other documents in this set
	Topics for which additional information is available by starting Help in the software
	Tips and information
	Important information
	Important information about issues that can result in physical harm to you or others

About this document

This document covers the following topics:

- Installing printer files on Mac OS computers
- Setting up printing connections on Mac OS computers
- Installing Fiery EX4112/4127 printing utilities
- Printing from Mac OS computers

User software

The following table lists the user software that is described in this document. This is the user software you need for setting up basic printing on the Fiery EX4112/4127. Other documents may describe other user software depending on what you are trying to accomplish.

User Software	Description
PostScript Printer Description (PPD/Plug-in) file	These files are used with the PostScript printer driver that allows the Fiery EX4112/4127 to appear in the Print and Page Setup dialog boxes of popular applications. The Fiery EX4112/4127 PPDs provide information about the copier to your application and printer driver.
PostScript screen fonts	These are the PostScript/TrueType screen fonts that correspond to the printer fonts installed on the Fiery EX4112/4127. For a complete list of PostScript/TrueType fonts installed on the Fiery EX4112/4127, print a Font List. For more information, see Command WorkStation Help.

Downloading printer drivers using WebTools

You can install printer drivers and printer description files from the User Software DVD or directly from the Fiery EX4112/4127 with WebTools.

For more information about setting up and starting WebTools, see [Utilities](#).

TO DOWNLOAD PRINTER DRIVERS WITH WEBTOOLS

- 1 Start your Internet or intranet browser and type the DNS name or IP address of the Fiery EX4112/4127.**
- 2 Click the Downloads tab.**
- 3 Click the link for the printer drivers that you want to install (Printer Files for Mac OS X).**

A file named OSX.dmg is downloaded to your desktop. The file contains a folder named Printer Driver in a BinHex-encoded, compressed format. If your Internet browser is equipped with an expander utility such as StuffIt Expander, the folder decodes and decompresses automatically.

If the Printer Driver folder does not automatically decode and decompress, double-click the file to start the utility that performs that function.

- 4 Install the appropriate printer driver for your operating system.**

For instructions on installing the printer driver for Mac OS X, see [“Installing Mac OS X printer drivers and printer description files”](#) on page 9.

Downloading printer drivers from the Fiery EX4112/4127

You can download printer drivers files to your computer directly from the Fiery EX4112/4127 over the network, and then install them following the procedures in [“Installing Mac OS X printer drivers and printer description files”](#) on page 9.

TO DOWNLOAD PRINTER DRIVER FILES FROM THE FIERY EX4112/4127

- 1 Click the Go menu and choose Connect to Server.
- 2 Enter SMB:// followed by the name of the Fiery EX4112/4127 or the IP address, and click Connect.

The enabled print connections are displayed along with a folder called Mac_User_SW.
If you cannot locate your Fiery EX4112/4127, contact your network administrator.
- 3 Open the Mac_User_SW folder.
- 4 Open the folder for your operating system and copy the Printer Driver folder to your desktop.
- 5 Install the appropriate printer driver for your operating system.

For instructions on installing the printer driver for Mac OS X, see [“Installing Mac OS X printer drivers and printer description files”](#) on page 9.

System requirements

For detailed system requirements, see [Welcome](#), provided in your media pack.

SETTING UP PRINTING ON MAC OS X

To set up the Fiery EX4112/4127 as a PostScript printer on a Mac OS X computer, install the printer driver files that correspond to your copier. The printer driver files are provided on the User Software DVD or can be downloaded from the Fiery EX4112/4127 over the network or using WebTools. Printer drivers provide a way to communicate information about print jobs between your applications, the Fiery EX4112/4127, and the copier.

Installing Mac OS X printer drivers and printer description files

The User Software DVD contains the following software for Mac OS X (in the OSX: Printer Driver folder):

- **OSX Installer:** Installs the PostScript Printer Description files (PPDs) and PPD plug-ins required to print from Mac OS X.
- **Language folders:** Printer description files that are installed by OSX Installer. You do not need to open these folders or install them manually on your computer. The appropriate files are installed by OSX Installer.

TO INSTALL THE PRINTER DESCRIPTION FILES FOR MAC OS X

- 1 Quit all open applications.**
- 2 Make sure that the Printer Setup Utility (or Print Center) is not running on your computer.**

Printer Setup Utility (or Print Center) updates the list of available printers when it starts. If a printer description file is added while Printer Setup Utility (or Print Center) is running, you cannot select the associated printer model until you restart.
- 3 Insert the User Software DVD into the DVD drive.**
- 4 Open the OSX folder and then the Fiery EX4112/4127 printer driver folder on the User Software DVD.**

If you are installing from the folder you downloaded from the Fiery EX4112/4127 over the network, browse to the Printer Driver folder on your desktop.

- 5 Double-click the OSX Installer icon to start installing the printer driver.**
- 6 Follow the on-screen instructions.**

The OSX Installer installs the printer driver files that correspond to the Fiery EX4112/4127.

- 7 When copying is complete, click Quit.**

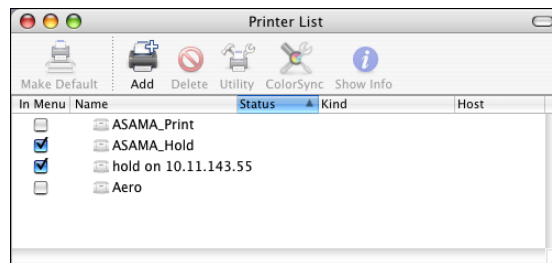
Setting up the Fiery EX4112/4127 on Mac OS X

After you install the printer driver files on Mac OS X, you must set up the Fiery EX4112/4127 in the Printer Setup Utility (or Print Center). This section describes how to set up your computer for printing to the Fiery EX4112/4127, including how to specify the options installed on the copier.

TO SET UP THE FIERY EX4112/4127 IN THE PRINTER SETUP UTILITY (FOR MAC OS X v10.4.x)

1 Choose Utilities from the Go menu, and start Printer Setup Utility.

The Printer List dialog box appears.

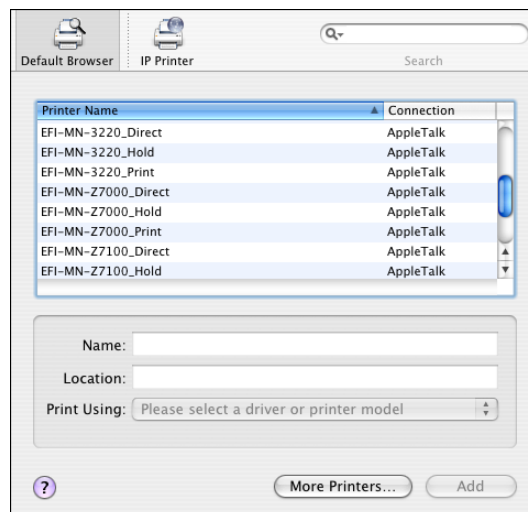


2 Click Add.

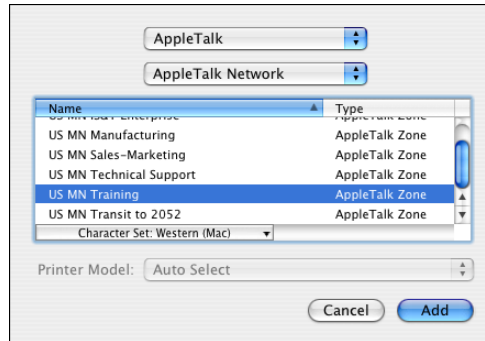
3 Choose the Default Browser tab or the IP Printer tab.

4 In the Default Browser, choose from the Printer Name list the Fiery EX4112/4127 with the AppleTalk connection type.

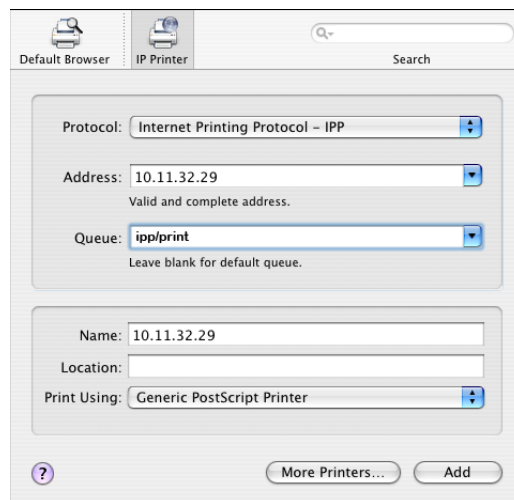
If the printer is not listed in the Printer Name list, click More Printers.



If the zone is not listed as the Default Zone, or one of the Recent Zones, select AppleTalk Network, select the zone, and then click Choose. Proceed to [step 5](#).



For IP Printing, choose Internet Printing Protocol - IPP, type the IP address or DNS name of the printer in the Address field. In the Queue field, type "ipp/" followed by the print connection (print, hold, or direct), all in lowercase letters. Proceed to [step 5](#).



- 5 For Printer Model or Print Using, choose the appropriate manufacturer name or model, and then select the file for the Fiery EX4112/4127 PPD.

If the manufacturer or model is not listed, choose Other and browse to the location of the PPD.

- 6 Click Add.

The Fiery EX4112/4127 is added to the list of printers.

- 7 If you want to create a desktop printer, select the Fiery EX4112/4127, choose **Printers > Create Desktop Printer**, specify a name and location for the icon, and click **Save**.

You can print a file to the Fiery EX4112/4127 by dragging the file to the Fiery EX4112/4127 Desktop Printer icon.

You are now ready to configure installable options for the Fiery EX4112/4127.

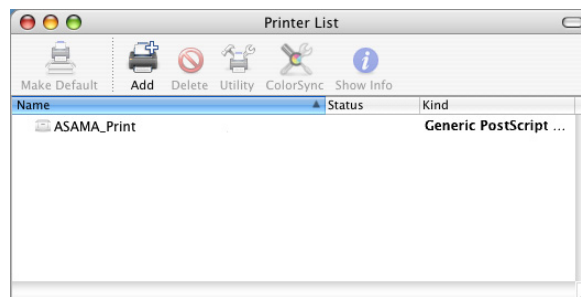
For information on configuring the installable options, see [“Configuring installable options”](#) on page 13.

TO SET UP THE FIERY EX4112/4127 WITH BONJOUR CONNECTION TYPE IN THE PRINTER SETUP UTILITY

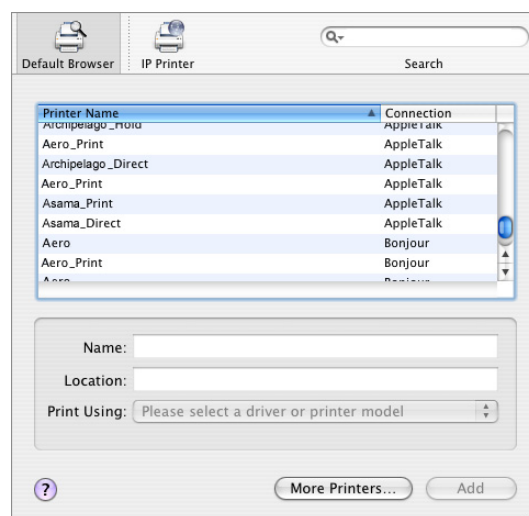
NOTE: Bonjour printers are available to Mac OS X v10.4.x computers only if Bonjour is enabled on the Fiery EX4112/4127.

- 1 **Choose Utilities from the Go menu, and start Printer Setup Utility.**

The Printer List dialog box appears.



- 2 **Click Add.**
3 **Click Default Browser.**



- 4 **Select the printer with the Bonjour connection type from the Printer Name list.**

- 5 For Print Using, choose the appropriate manufacturer name or model, and then select the file for the Fiery EX4112/4127 PPD.**

If the manufacturer or model is not listed, choose Other and browse to the location of the PPD.

- 6 Click Add.**

- 7 Choose the installable options and click Continue.**

The Fiery EX4112/4127 is added to the list of printers.

- 8 If you want to create a desktop printer, select the Fiery EX4112/4127, choose Printers > Create Desktop Printer, specify a name and location for the icon, and click Save.**

You can print a file to the Fiery EX4112/4127 by dragging the file to the Fiery EX4112/4127 Desktop Printer icon.

Configuring installable options

You must also choose the options installed on the copier so that you can take advantage of the options when you print.

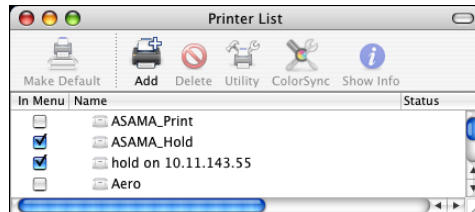
The Fiery EX4112/4127 installable options are:

Installable option	Selections
Booklet Tray Option	Not Installed, Booklet Tray
Finisher Option	None, D-Finisher
Folder Tray Option	Not Installed, Folder Tray
Interposer	Not Installed, Interposer
Optional Trays	Not Installed, Tray 6 (Oversized), Trays 6 and 7 (HCF)
Punch Option	Not Installed, 2/3 hole Punch, 2/4 hole Punch

NOTE: For more information about the print settings that use these options, see [Print Options](#).

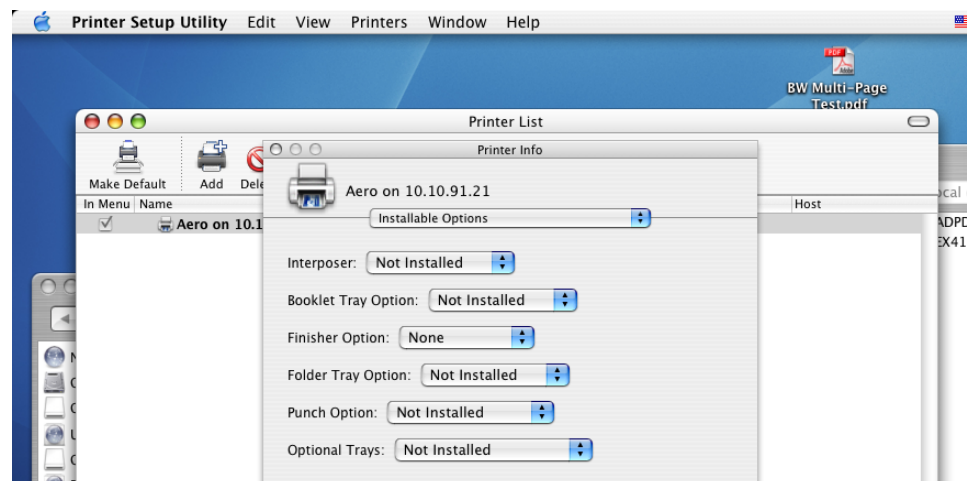
TO CONFIGURE INSTALLABLE OPTIONS

- 1 Choose Utilities from the Go menu, and start Printer Setup Utility (or Print Center).
- 2 Select your printer in the Printer List.



- 3 Choose Show Info from the Printers menu.
- 4 Choose Installable Options.

NOTE: Fiery EX4112/4127 installable options are shown in the dialog box.



- 5 Select the appropriate settings.
- 6 Click Apply Changes.
- 7 Close the window.

PRINTING UTILITIES

The following methods allow you to print to the Fiery EX4112/4127:

- USB device
- FTP printing

Printing from a USB device

You can print files from a USB device to the Fiery EX4112/4127. Files, including those that originated on a Mac computer, can be saved to a USB device and downloaded directly to the Fiery EX4112/4127.

You can print files automatically from a USB device to one of the standard print queues on the Fiery EX4112/4127 (print, hold, or direct) or to published virtual printers. Verify with your administrator that these connections are published in Setup. For more information about virtual printers, see [Utilities](#).

Before you print files from a USB device, ask your administrator to configure the appropriate options. For more information about configuring options, see [Configuration and Setup](#).

Automatic printing

To print automatically to Print, Hold, or Direct queues or to published virtual printers with the Print All setting, set up folders on your USB device with the names print, hold, and direct and the names of any published virtual printers. When you plug the USB device into a USB port on the Fiery EX4112/4127, the files in those folders are sent automatically to the corresponding queues.

TO PRINT FILES FROM THE USB DEVICE



- 1 Configure the USB printing options in Setup.**

For more information, see Configure Help.

- 2 Create folders at the top level (root level) of the USB device named print, hold, and direct.**

- 3 Save the files (PS, EPS, PCL, TIFF, and PDF) from the user's computer to the USB device.**

Files copied to the print, hold, and direct folders are downloaded to the corresponding print connection on the Fiery EX4112/4127 automatically when you connect the USB device to the Fiery EX4112/4127. Files copied to the root level of the USB device are downloaded to the Print queue.

- 4 **Remove the USB device from the computer and connect it to the USB connector on the Fiery EX4112/4127.**



Make sure that the USB device is properly stopped before you disconnect it from the computer.

For the location of the USB port, see [Configuration and Setup](#).

FTP printing



If FTP Services are enabled on the Fiery EX4112/4127, the Fiery EX4112/4127 is set up as an FTP server and you can send jobs to the Fiery EX4112/4127 using FTP printing.

For more information about configuring FTP Services, see [Configure Help](#).

You can use any FTP client software. Before you use FTP printing, the FTP client software requires the following information (consult your administrator):

- IP address or DNS name for the Fiery EX4112/4127
- Directory or path to send the job to, such as the Print queue, Hold queue or published virtual printers (if supported)

NOTE: You cannot print to the Direct connection using FTP printing.

- User name and password (if required)

You can send PostScript (PS), Printer Control Language (PCL), Tagged Image File Format (TIFF), and Portable Document Format (PDF) files to the Fiery EX4112/4127. Encapsulated PostScript (EPS) files are not supported for FTP printing.

TO PRINT FILES TO THE FIERY EX4112/4127 USING THE FTP PROTOCOL

- 1 **Connect to the Fiery EX4112/4127 with your FTP client software.**

Folders corresponding to the Print queue and Hold queue are displayed. Folders for any published virtual printer are also displayed.

NOTE: You cannot print to the Direct connection using FTP printing.

- 2 **Navigate to the folder representing the print connection or published virtual printer.**
- 3 **Upload your job to the desired folder.**

After the job is printed, it is deleted from the Fiery EX4112/4127.

PRINTING FROM MAC OS X

Print to the Fiery EX4112/4127 just as you would print to any other printer from a Mac OS X application. Select a printer and print the file from within the application. In addition to this method, you can download files to the Fiery EX4112/4127 using Hot Folders (see [Utilities](#)) and the Docs WebTool (see [Utilities](#)), and print documents using Command WorkStation (see [Utilities](#)).

Printing from applications with Mac OS X

After you install the Fiery EX4112/4127 printer description files using the OSX Installer, you can print directly from most Mac OS X applications. For more information about installing printer description files with the OSX Installer see [page 9](#).

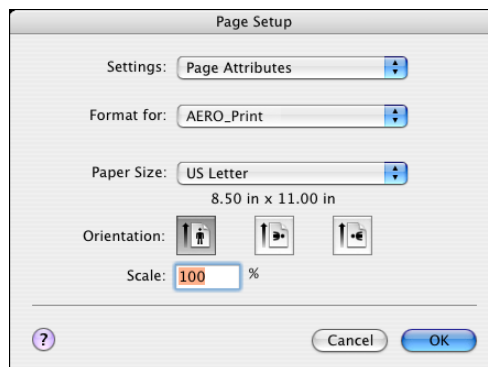
Setting print options and printing from Mac OS X

In Mac OS X applications, print options are set from the Page Setup dialog box and the Print dialog box. For information about specific print options, see [Print Options](#).

NOTE: Some default print options are set by your administrator during Setup. For information about the current server default settings, contact your administrator or the operator.

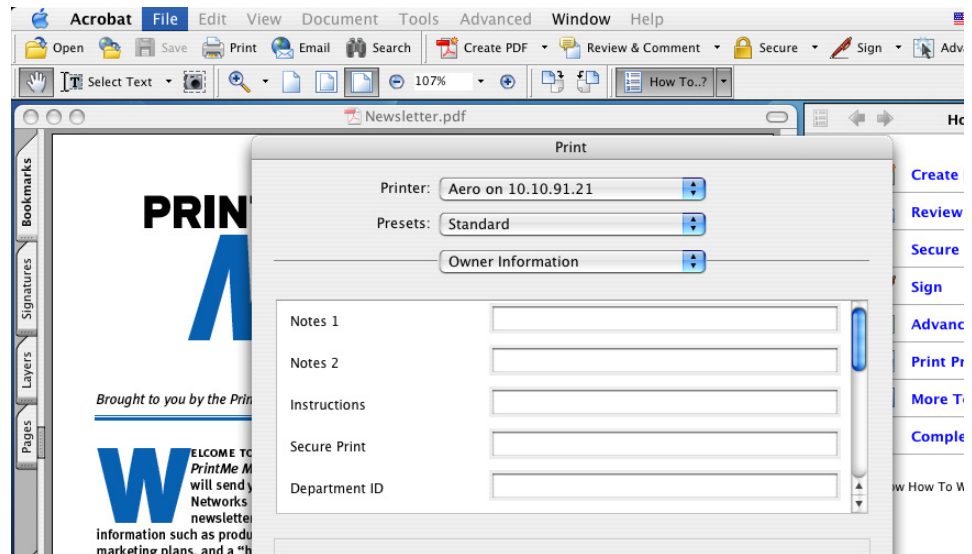
TO SET PRINT OPTIONS AND PRINT FROM MAC OS X

- 1 Open a file and choose Page Setup from the File menu in your application.
- 2 For Settings, choose Page Attributes. For Format for, choose the Fiery EX4112/4127.



- 3 Select the Page settings for your print job.
- 4 Click OK.

- 5 Choose Print from the application's File menu.
- 6 Choose the Fiery EX4112/4127 as your printer.
- 7 Choose Owner Information from the drop-down list.



- 8 Type information in the Notes 1 and Notes 2 fields.

Enter user and job identification information for managing purposes, or other information that is required at your site.

The information you type in the Notes field can be viewed and edited by the operator in Command WorkStation and also appears in the Job Log.

- 9 Type instructions to the operator about the job in the Instructions field.

These instructions can be displayed in Command WorkStation, but do not appear in the Job Log. These instructions *can* be edited by the operator.

- 10 Type the Department ID specified for your group (if necessary).

The Department ID is assigned at the copier touch panel display. For more information, see the documentation that accompanies your copier.

- 11 Type the password for your department (if necessary).

The Department password is assigned at the copier touch panel display. For more information, see the documentation that accompanies your copier.

- 12 Type a password in the Secure Print field if you are sending a secure print job.

For more information, see the documentation that accompanies your copier.

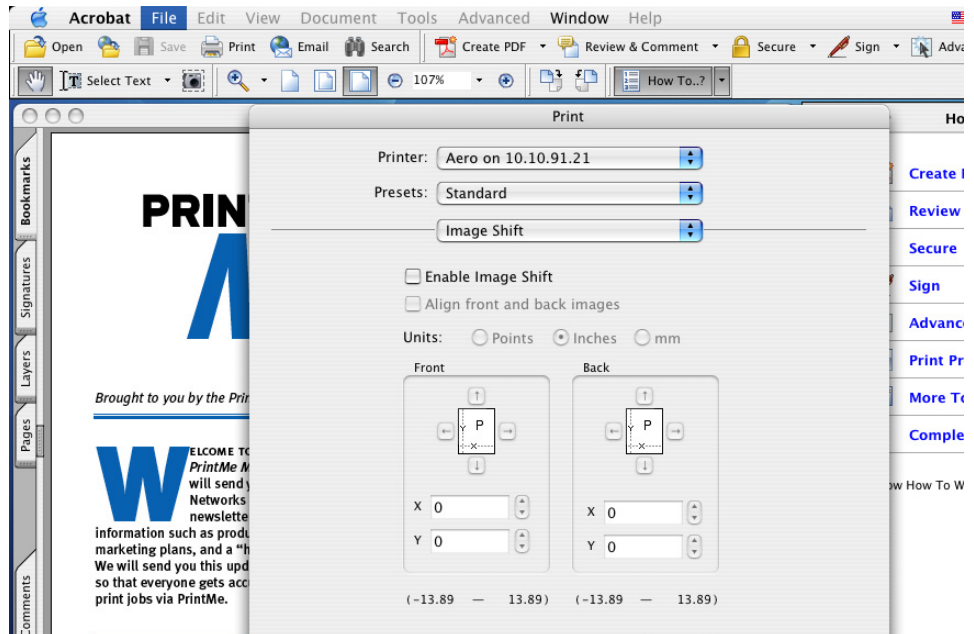
- 13 Type your user name or domain\user name in the User Name field if User Authentication is enabled on the Fiery EX4112/4127.

- 14 Type your local password or domain password in the Password field if User Authentication is enabled on the Fiery EX4112/4127.

- 15 Type values for the other fields as needed.

For information about these fields, see [Print Options](#).

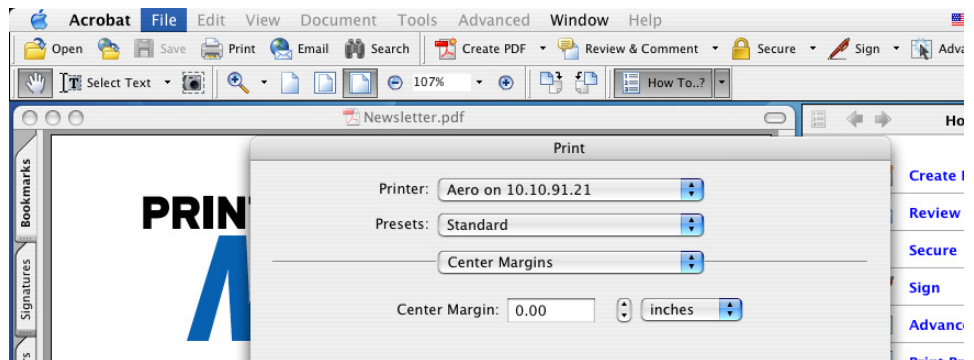
- 16 To shift the position of the print image on the page, choose Image Shift from the drop-down list and specify the shift distances.



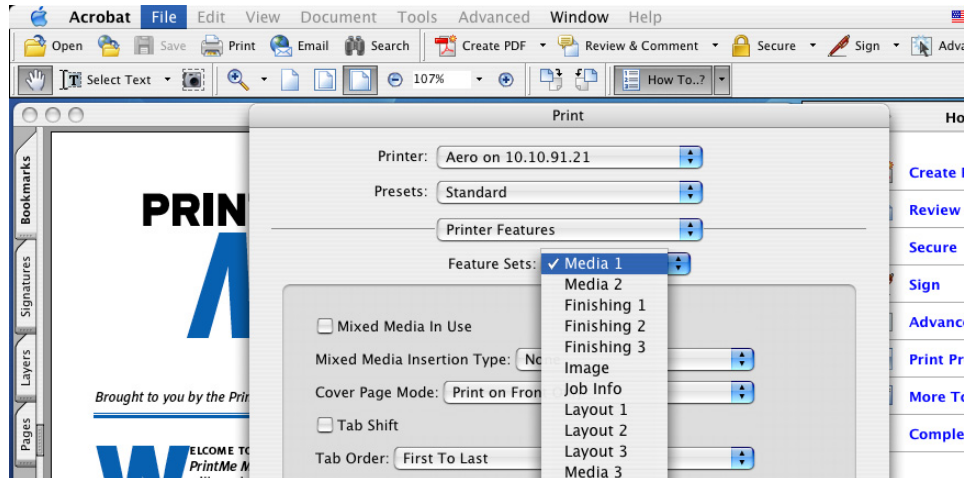
You might need to shift the print image to allow for binding, for example.

- 17 To specify a margin value (millimeters or inches) at the folding line for imposition printing, choose Center Margins from the drop-down list.

NOTE: Center Margins is only available with the Booklet Maker print option.



- 18 Choose Printer Features to specify printer-specific options. Specify settings for each selection in the Feature Sets list.**



These print options are specific to the Fiery EX4112/4127 and the copier. You must choose each Feature Set to see all the options. These options override settings in Fiery EX4112/4127 Printer Setup, but can be changed from Command WorkStation.

If you choose Printer's default, the job prints according to the settings specified in Setup.

For more information about these options and overrides, see [Print Options](#).

Some print options that are selectable from an application are similar to the print options that are specific to the Fiery EX4112/4127 and the copier. In these cases, use the print options specific to the Fiery EX4112/4127 and the copier that appear in the Printer Features menu. The application may not set up the file properly for printing on the Fiery EX4112/4127, resulting in unexpected finishing, printing errors, or longer processing time.

If you select an invalid setting or combination of settings when printing a document, no error message appears. For example, you may be able to select duplex printing on transparency media. Invalid settings and combinations are ignored by the Fiery EX4112/4127.

- 19 Click Print.**

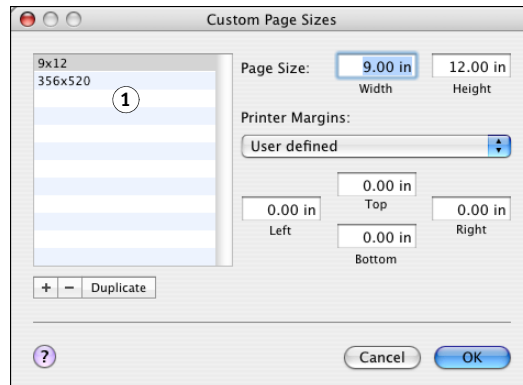
Defining custom page sizes from Mac OS X


With custom page sizes, you define page dimensions and margins. After you define a custom page size, you can use it from within an application without redefining it each time you print.

TO DEFINE A CUSTOM PAGE SIZE ON MAC OS X v10.4

- 1 Choose Page Setup from the application's File menu.
- 2 Choose Manage Custom Sizes from the Paper Size menu.

1 Custom page names




- 3 Click the plus sign () to add a new custom page size.
- 4 Double-click Untitled to type a name for the custom page size.
- 5 Enter the page dimensions and margins.
- 6 Click OK to exit.

The custom page size you defined is added to the list of Page Size selections in the Page Setup dialog box.

TO EDIT A SAVED CUSTOM PAGE SIZE ON MAC OS X v10.4

- 1 Choose Page Setup from the File menu in your application.
- 2 Choose Manage Custom Sizes from the Paper Size menu.
- 3 Select the Custom Page Size name.
- 4 Edit the page dimensions and margins.
- 5 Click OK to exit.

TO DELETE A CUSTOM PAGE SIZE ON MAC OS X v10.4

- 1 Choose Page Setup from the File menu in your application.
- 2 Choose Manage Custom Sizes from the Page Size menu.
- 3 Click the Custom Paper Size name.
- 4 Click the minus sign () to delete a custom page size.
- 5 Click OK to exit.

TO MAKE A COPY OF THE CUSTOM PAGE SIZE ON MAC OS X v10.4

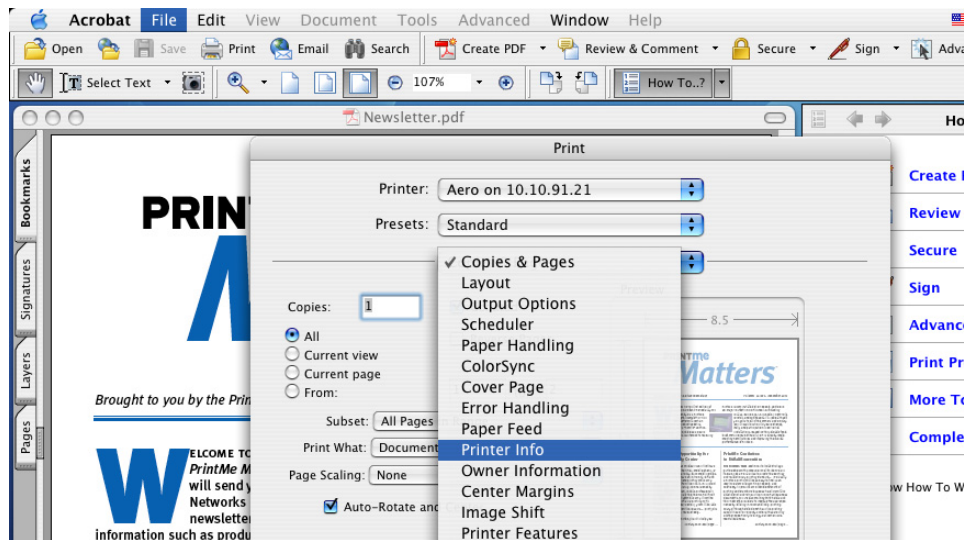
- 1 Choose Page Setup from the File menu in your application.
- 2 Choose Manage Custom Sizes from the Page Size menu.
- 3 Click the Custom Paper Size name.
- 4 Click Duplicate.
- 5 Click OK to exit.

Enabling Two-Way Communication

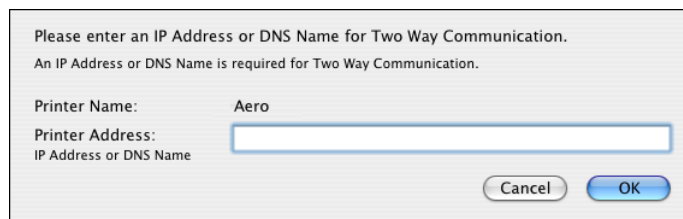
If you enabled a TCP/IP network, you can retrieve copier status from the Fiery EX4112/4127 and display them in the printer driver using the Two-Way Communication feature. The copier status includes the current paper and toner levels.

TO ENABLE TWO-WAY COMMUNICATION

- 1 Open a file and choose Print from the File menu in your application.
- 2 Choose the Fiery EX4112/4127 as your printer.
- 3 Choose the Printer Info tab and click Configure under Two-Way Communication.



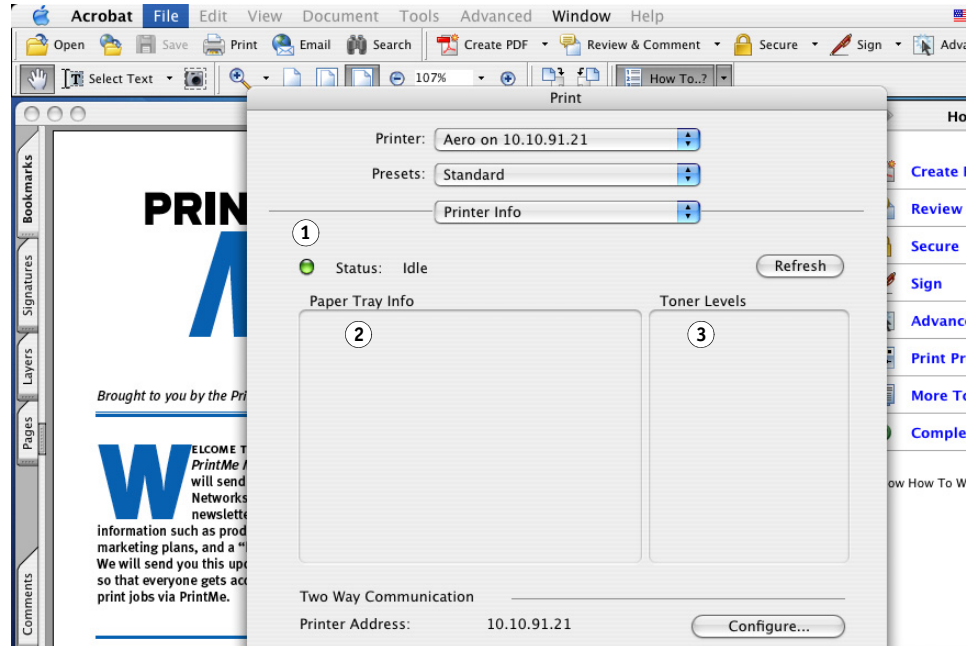
A dialog box appears requesting an IP address or DNS name.



- 4 Type the Fiery EX4112/4127 IP address or DNS name in the Printer Address field.
- 5 Click OK.

6 To update the copier status in the Printer Info window, click Refresh.

- 1 Status light
- 2 Paper Tray information
- 3 Toner levels



- **Status light:** Displays the copier status, such as idle or printing, or error conditions that can prevent you from printing.
- **Paper Tray Info:** Displays the tray name and the amount of paper remaining in the specified tray as a percentage.
- **Toner Levels:** Displays the amount of remaining toner as a percentage. The toner amount displayed is roughly calculated and may not match the exact amount of toner remaining.

INDEX

B

- Bonjour Connection Type in Printer Setup Utility 12
- Booklet Tray option 13

C

- Command WorkStation 17
- custom page size
 - defining for Mac OS X 21

D

- default print options 17
- Docs tab in WebTools 17
- Downloads tab in WebTools 7

F

- Feature Sets 20
- Finisher option 13
- Folder Tray option 13
- FTP Printing 16

H

- Hot Folders 17

I

- installable options, specifying in Mac OS X 14
- installing
 - printer driver for Mac OS X 9
 - printer drivers from server 8
- Instructions field 18
- Interposer option 13
- IP Printing, in Printer Setup Utility (Print Center) 11

M

- Mac OS X
 - PPD 17
 - print options 17
 - printer driver installation 9
 - printer driver setup 10

N

- Notes field 18

O

- Optional Trays 13
- OSX Installer 9, 17
- Owner Information 18

P

- Page Setup dialog box 17
- PostScript fonts 6
- PostScript Printer Description file, *see* PPD
- PPD
 - Mac OS X 17
 - overview 6
- Print Center 9, 10
- Print dialog box 17
- print options
 - Mac OS X 17
- printer driver
 - downloading 7
 - installation, Mac OS X 9
 - setup, Mac OS X 10
- Printer Features 20
- Printer Setup Utility 9, 10
 - Bonjour Connection Type 12
- Printer's default 20

S

- Secure Print field 18

T

- Tray 6 (Oversized) 13
- Trays 6 and 7 (HCF) 13

U

- USB device 15

W

- WebTools
 - Docs tab 17
 - Downloads tab 7

