

Printer Driver?

What is a Printer Driver? > > > > >

THE DOCUMENT COMPANY

XEROX®

What is a printer driver?

A printer driver is a program on your computer that controls a printer. Whenever you print a document, the printer driver converts text and graphics into commands the printer can understand, such as the page size, text and graphics formatting, margins, footers, and headers.

Where is the printer driver on my computer?

You must install CentreWare printer drivers on your computer. These printer drivers are provided on a CD with each WorkCentre Pro and may be installed on your network. Check with your systems administrator. You can also download updated drivers from the Xerox Web site (www.xerox.com). Once a printer driver is installed it is accessible in the Printers folder on your PC (Start > Settings > Printers).

When do I use a printer driver?

When your document is ready to print or anytime you want to change the default printer settings.

Why change printer driver settings?

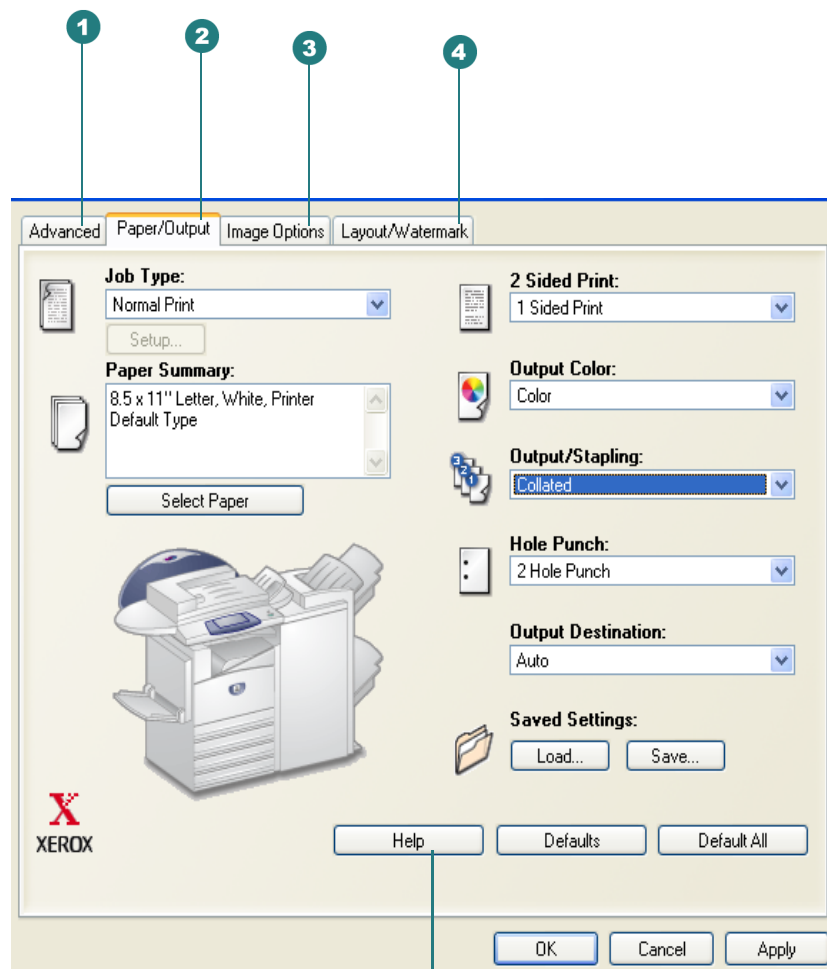
Once a printer driver is installed you could just use all the default settings, but by accessing the printer driver you have more control over the way your document will look and print, such as image orientation, two-sided printing, placing a watermark, reducing or enlarging the image on your page, and many more options. *See the next page for a list of selected printing features and where they are located on the printer driver.*

How do I change printer driver settings?

In your application choose File > Print. The print dialog appears. Select your printer from the drop down list. Choose Properties and the printer driver dialog appears. Driver setting changes from this dialog apply to the open document and application, and are temporary.

Or, choose Start > Settings > Printers. Right-click on a printer icon and select Document Defaults (NT) Printing Preferences (2000 / XP) from the menu. The printer driver dialog appears. Driver setting changes from this dialog become the default settings.

PCL 5c Printer Driver



For additional information about printer driver features click the **Help** button. Please note that the driver graphics are representative. Features may vary based on printer configuration and driver options selected. The background will vary slightly in Windows NT / 2000 / XP environments.

1 Advanced Tab

Advanced Printing Features
Print Optimizations
TrueType Font
TrueType Font Download Option
Custom Paper Size
Copies
Orientation
Banner Sheet
Request Set Offset
Color Correction
Rotate Image 180 Degrees
Override/Restore Defaults
Set Features to Default
Set All Features to Default

2 Paper/Output Tab

Job Type
• Normal Print, Secure Print
• Sample Set, Delayed Print
Select Paper
• Size, Color, Type
• Covers and Advanced...
Document Body, Covers,
Transparency Separators
2 Sided Print
Output Color
Output/Stapling*
• Uncollated
• Collated, "X" staples
Hole Punch*
Output Destination
Saved Settings

*NOTE: When the Professional Finisher is installed and configured in the driver, Output/Stapling and Hole Punch are replaced by Select Finishing. Select Finishing also provides access to the Booklet Creation dialog.

3 Image Options Tab

Reduce / Enlarge
Graphics Mode (Windows 2000 / XP)

4 Layout/Watermark Tab

N-Up*
Booklet Layout*
Booklet Finishing (available with Professional Finisher)*
Draw Outlines*
Fit to New Paper Size
Image Orientation*
Watermark
• Edit, New, Delete
• Watermark Editor
• First Page Only
• Print in Foreground

+Feature Not Available on Windows NT Drivers

To access the printer driver:

1. Choose File > Print in your application.
2. Choose Properties. Driver setting changes from this dialog apply to the open document and application, and are temporary.
—Or—
1. Choose Start > Settings > Printers.
2. Right-click on a printer icon and select Document Defaults (NT) or Printing Preferences (2000 / XP) from the menu. Driver setting changes from this dialog become the default settings.