



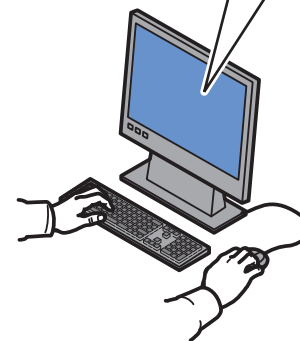
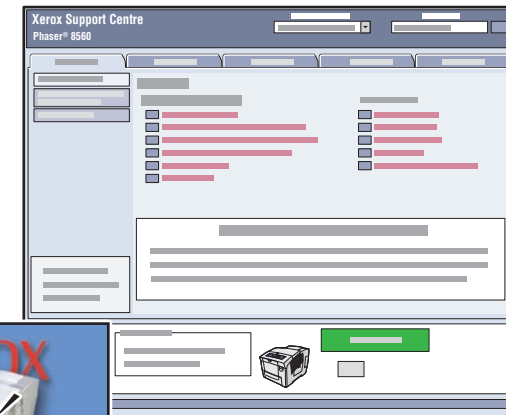
XEROX.

printer

Quick Use Guide



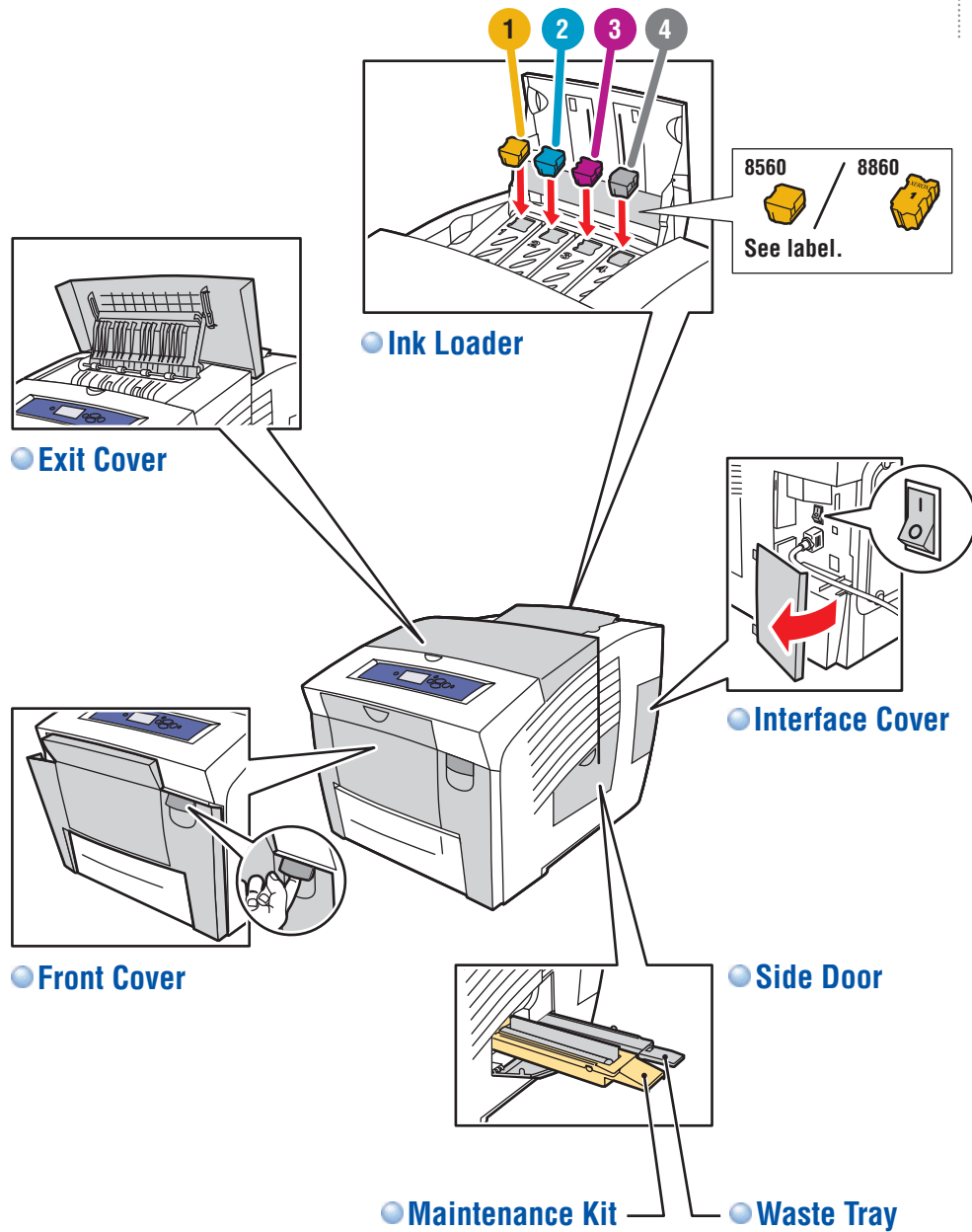
Xerox Support Centre



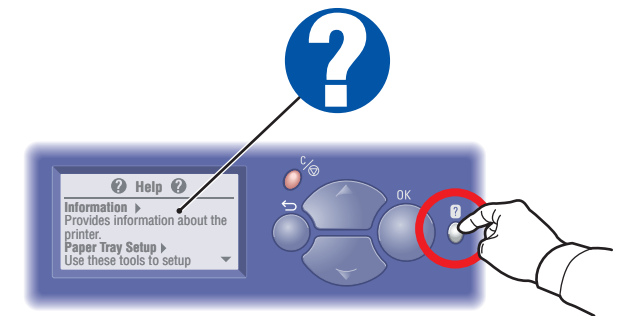
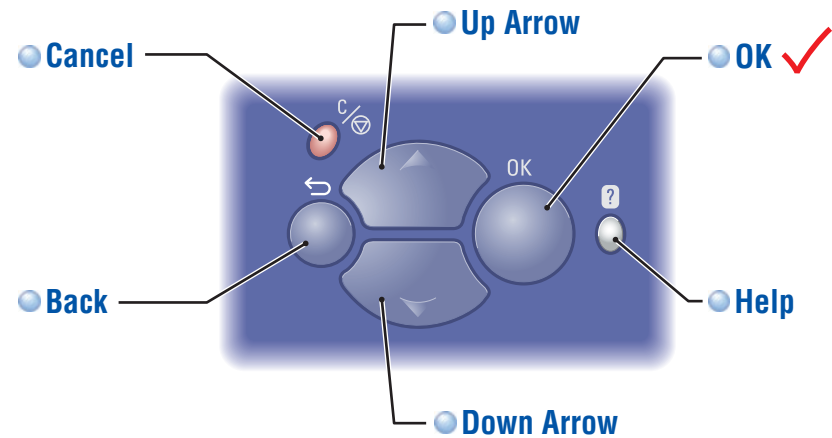
Utility installs with the printer driver, or go to www.xerox.com/support. Double-click the icon on the Windows desktop or Mac OS X dock.

-  **User manuals and video tutorials**
-  **Troubleshooting**
-  **Printer and supplies status**
-  **User safety**
-  **Material Safety Data Sheets**

Printer Tour

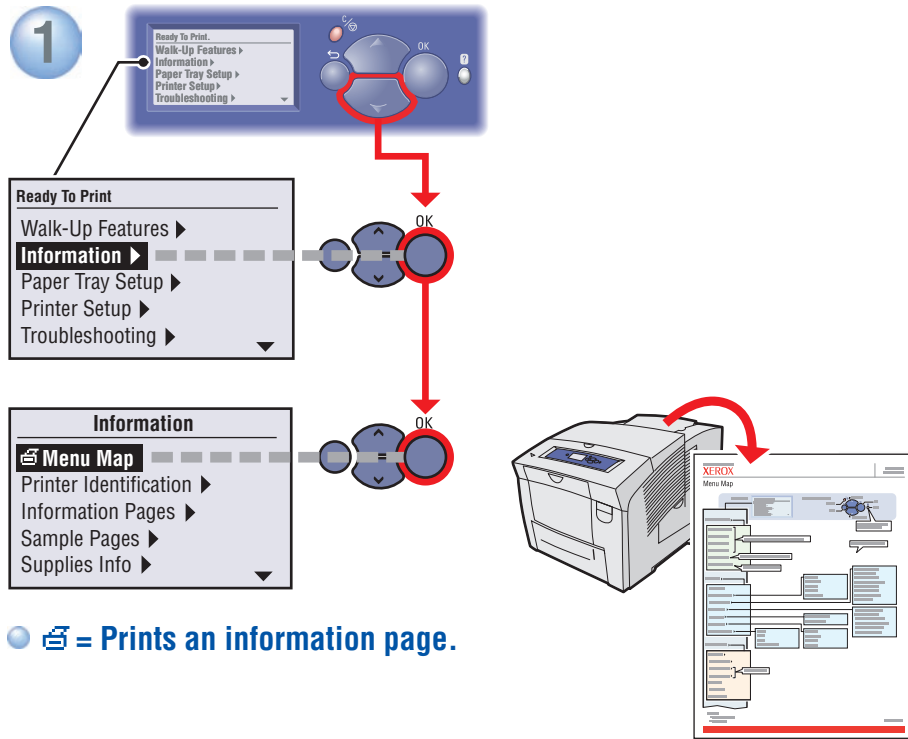


Control Panel Buttons

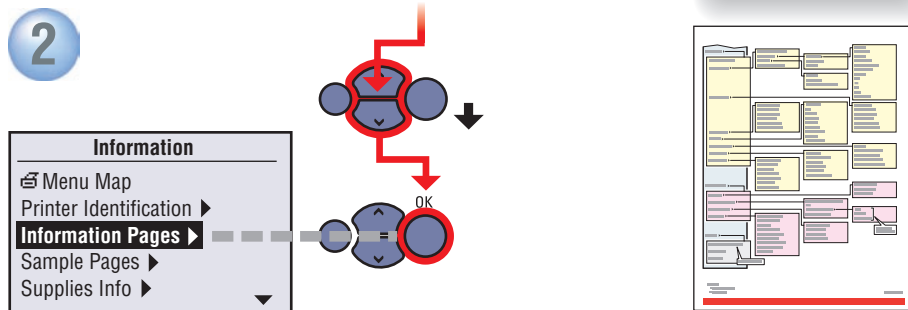


Help Button:
Press at any time to display additional information about the message or menu.

Information Pages



☞ = Prints an information page.



Supported Papers

Trays 1-4

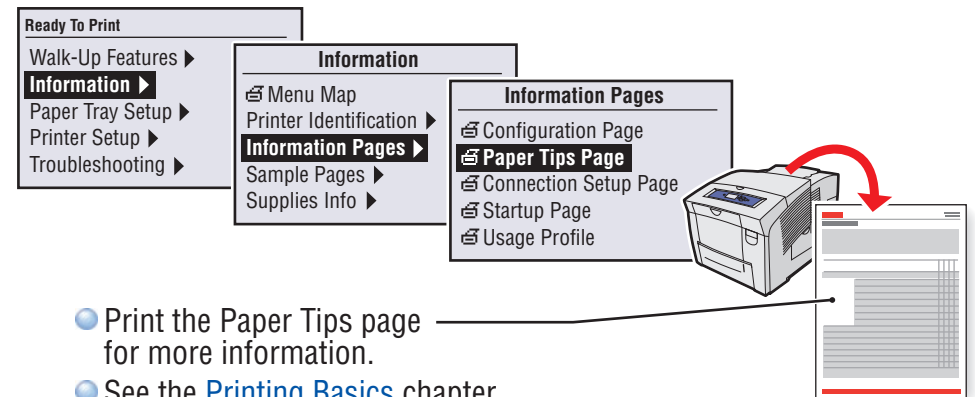
60 – 120 g/m²
(16 – 32 lb. Bond)

Statement	5.5 x 8.5 in.
Executive	7.25 x 10.5 in.
A/Letter	8.5 x 11.0 in.
US Folio	8.5 x 13.0 in.
Legal	8.5 x 14.0 in.
ISO B5	176 x 250 mm
B5 JIS	182 x 257 mm
A4	210 x 297 mm
#10 Commercial	4.12 x 9.5 in.
DL	110 x 220 mm
C5	162 x 229 mm

Tray 1

60 – 220 g/m²
(16 lb. Bond – 80 lb. Cover)

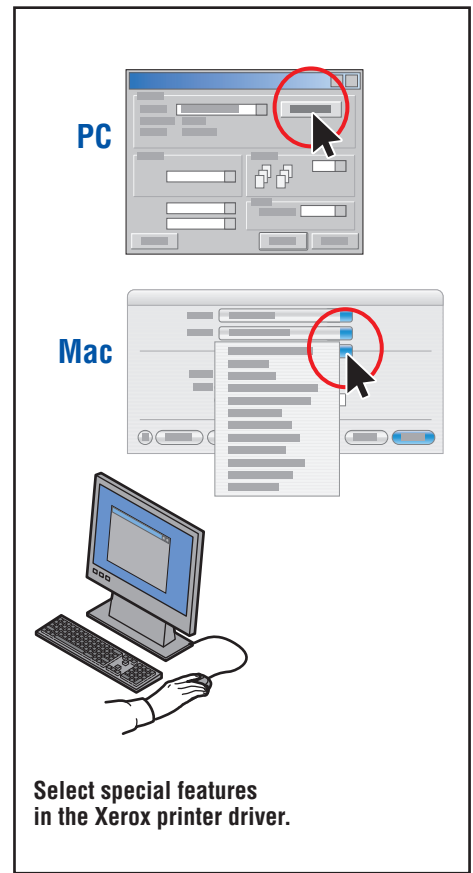
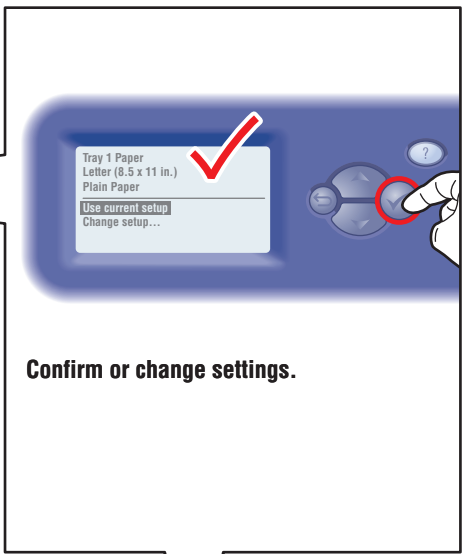
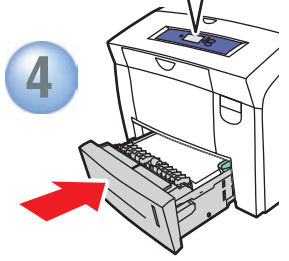
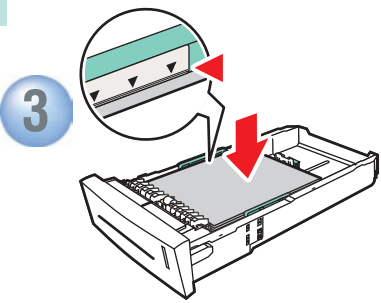
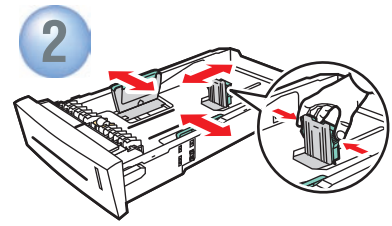
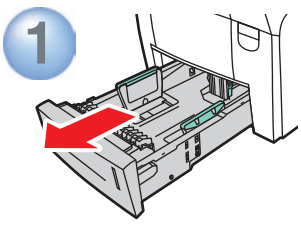
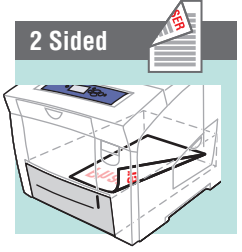
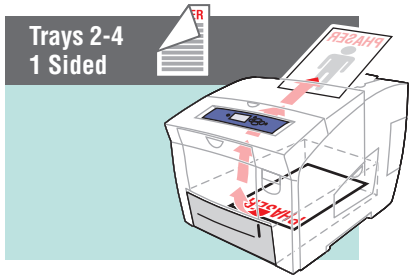
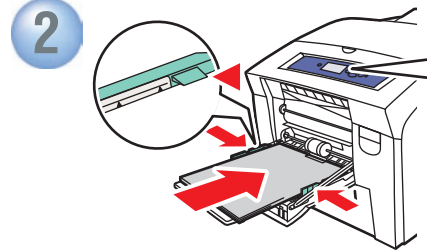
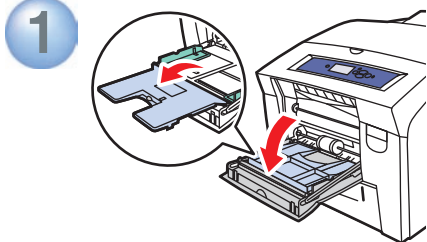
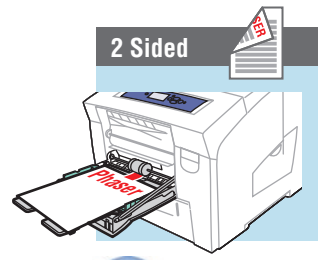
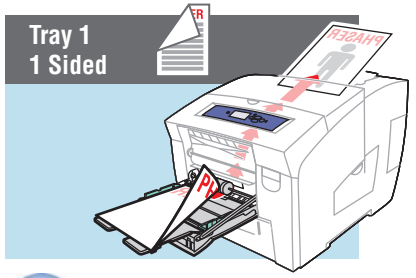
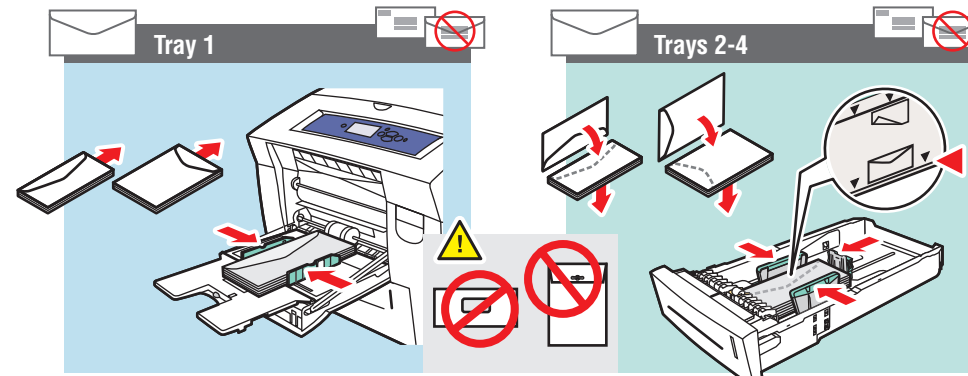
Index Cards	3 x 5 in.
A6	105 x 148 mm
A5	148 x 210 mm
Custom	(SE) x (LE)
#5 1/2	Baronial 4.375 x 5.75 in.
#6 3/4	3.625 x 6.5 in.
Monarch	3.87 x 7.5 in.
Booklet	6 x 9 in.
A7	5.25 x 7.25 in.
Choukei 3 Gou	120 x 235 mm
Choukei 4 Gou	90 x 205 mm
Custom	(SE) x (LE)



- Print the Paper Tips page for more information.
- See the **Printing Basics** chapter in the *User Guide*.

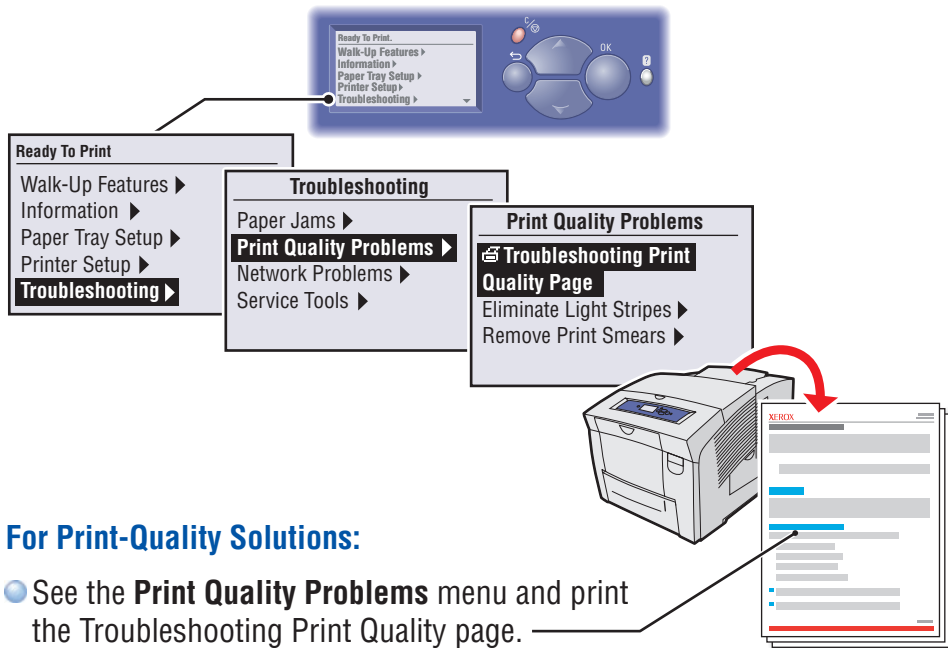


Basic Printing



● **Adjust guides to paper size. Press to click in place.**

Print Quality



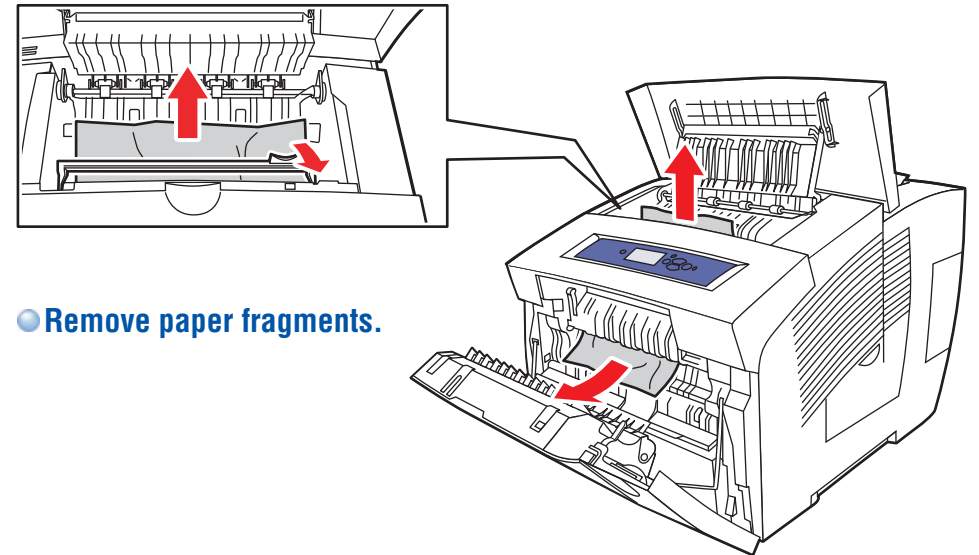
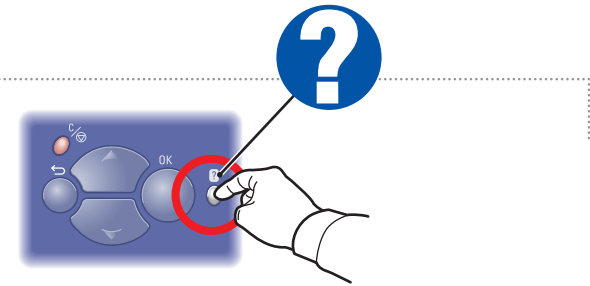
For Print-Quality Solutions:

- See the **Print Quality Problems** menu and print the Troubleshooting Print Quality page.

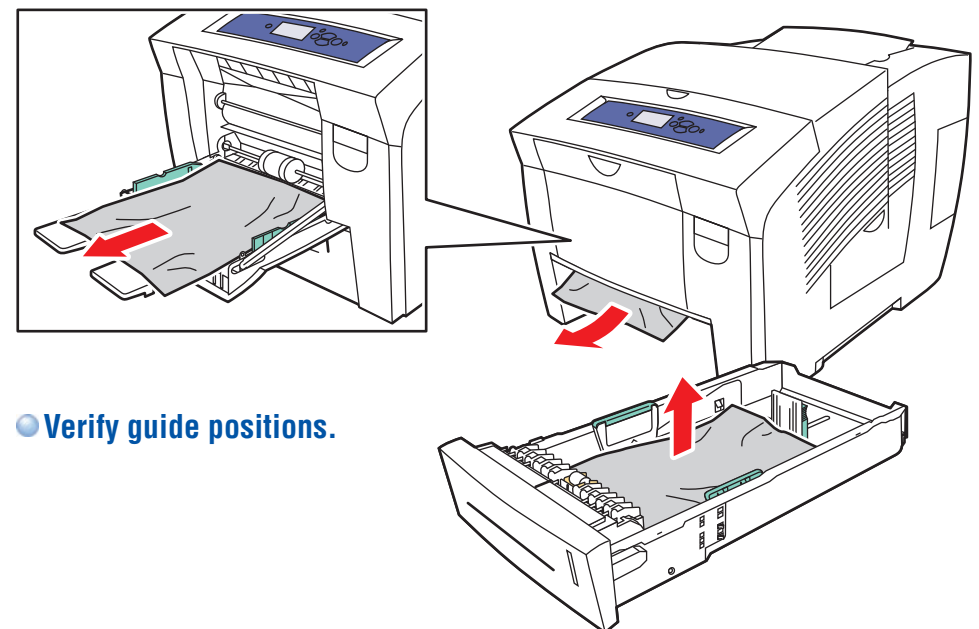
- See the **Print Quality** chapter in the *User Guide*.



Paper Jams



- **Remove paper fragments.**



- **Verify guide positions.**