

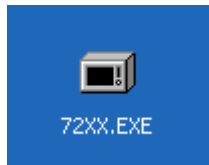
72XX System Administrator Software Upgrade

Initial actions:

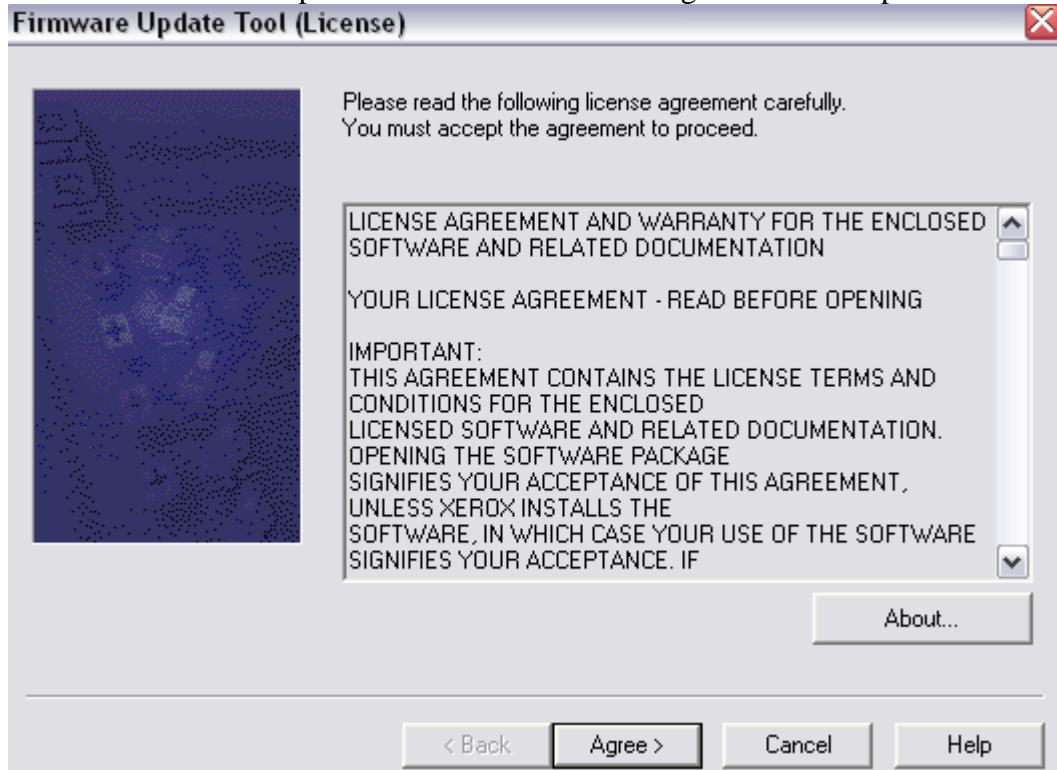
- ❑ Ensure **Port 9100** is enabled on the machine
- ❑ Client must have Microsoft Windows XP
- ❑ If there are **more than one 7228/7235/7245** machine on the network. You are required to know the **IP address** for the machine to be upgraded,
- ❑ Ensure machine is powered on.
- ❑ Close the Web UI, if it is open.

To upgrade

1. Double click on 72XX.exe

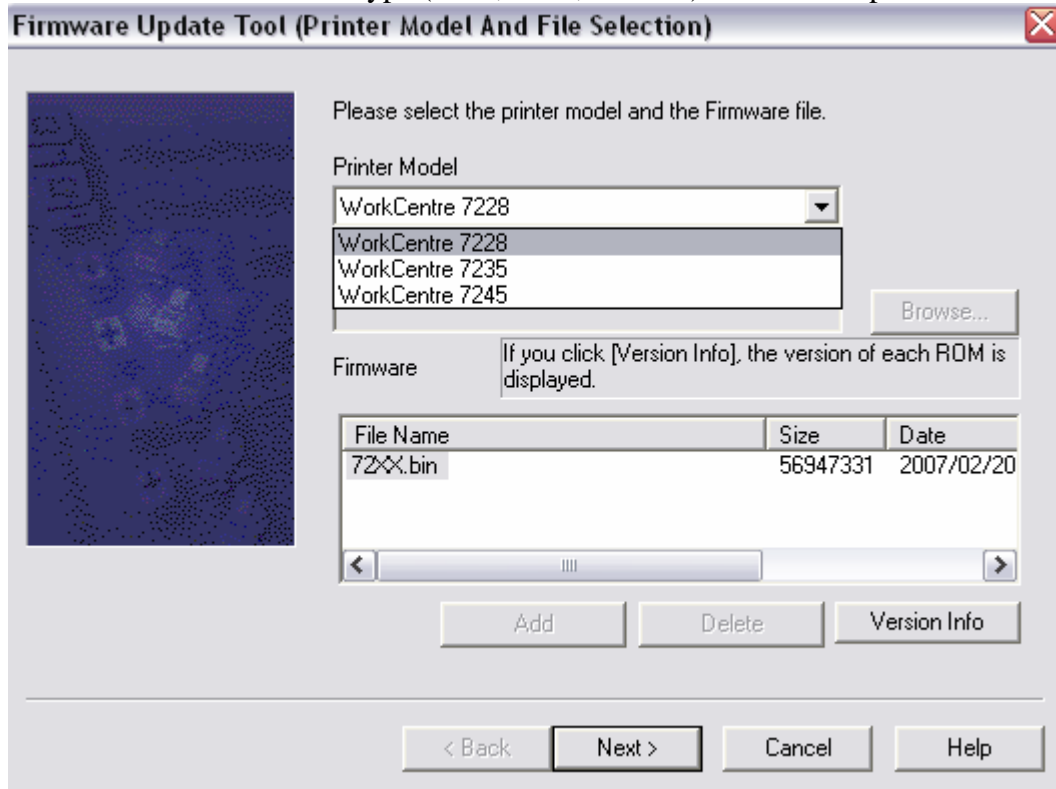


2. Wait until the tool processes and a license message box comes up.

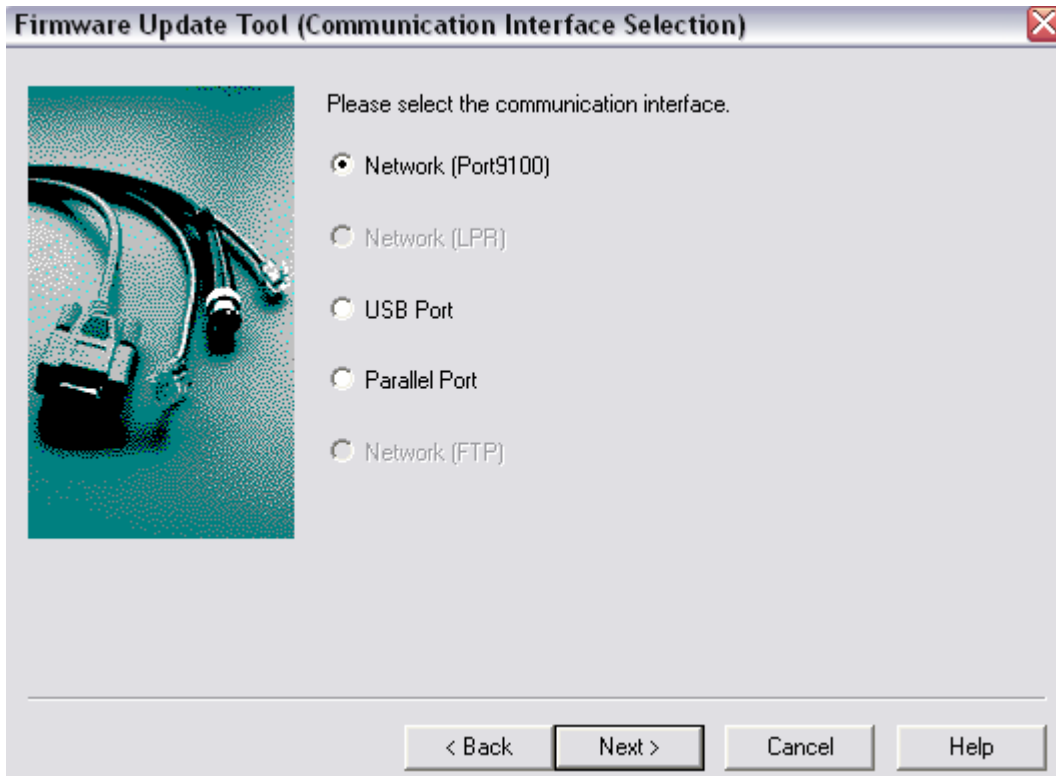


3. Read the License Screen and select **Agree** to accept the license

4. Select the Machine type (7228, 7235, or 7245) from the drop down list



5. Click on the file name in the lower box
6. Select **Next**.
7. Select Network (Port 9100) radial button and select **Next** button.



8. Select **Search** – the tool will check for 7228, 7235, 7245 machines (per the machine type selected in the drop down in step 5) on the network and display them.
9. Click on the check box by the machine to be upgraded
10. Select **Next**
11. Firmware Update tool status message box comes up. Machine LUI will display Downloading. **Do NOT Power Machine OFF during this time.** Lower area of box on client will populate with software modules and status.
12. Firmware Update tool (result) will display the machine and upgrade has completed successfully. Select **Finish** button.
13. Pop up message asks if you want to Exit. Select **Yes** button.

If error message appears that machine is busy, wait until copy / print jobs complete and try again.

If Search function does not find machine (s) add sub net mask (from config sheet). If still not found, add the IP address of the machine.

Instruction on how to Activate XPS file format Printing and Scanning

1. Switch the machine on, if necessary, by pressing the power switch
2. to the <I> position at the top right hand side of the machine. Press the <Log In/Out> button on the control panel.
3. Enter the correct user ID using the numeric keypad on the control panel or the keyboard screen, then select [Confirm].
NOTE: The default Key Operator ID is "11111". If the Auditoron feature is enabled, you

may also be required to enter the password. The default password is “x-admin”.

4. Select [System Settings] on the [System Administrator Menu] screen.
5. Select [System Settings] on the [System Settings] screen.
6. Select [Common Settings] on the [System Settings] screen.
7. Select [Maintenance] on the [Common Settings] screen.
8. Select [Software Options] on the [Maintenance] screen.
9. Select [Keyboard] and enter the Password. Then select [Save]. The password is located on the inside of the front cover of this document.
10. Enter “ pgkiquaipozwd “ or “ yFMTxd9KFe9z “
11. Reboot the Machine. Power OFF and then Power On