

# Xerox Phaser 3500 Network Firmware Release Notes and Installation Instructions

**Network Firmware Version Number:** 1.12

Feature Additions:

- Mac OS 10.X not printing with Rendezvous/Bonjour
- Slow CWIS connection over 10MB Networks
- TSK NIC02 152 Error

Feature Additions:

- Support Added for SSL (SSL Configuration URL "http://(PrinterIPAddress)/properties/\_sslConfig.html")
- Support Added for 802.1x via MD5 (802.1X configuration URL http://(PrinterIPAddress)/properties/\_802\_1x.html)

## Xerox Phaser 3500 Firmware Installation Instructions

### Read this before beginning the firmware update

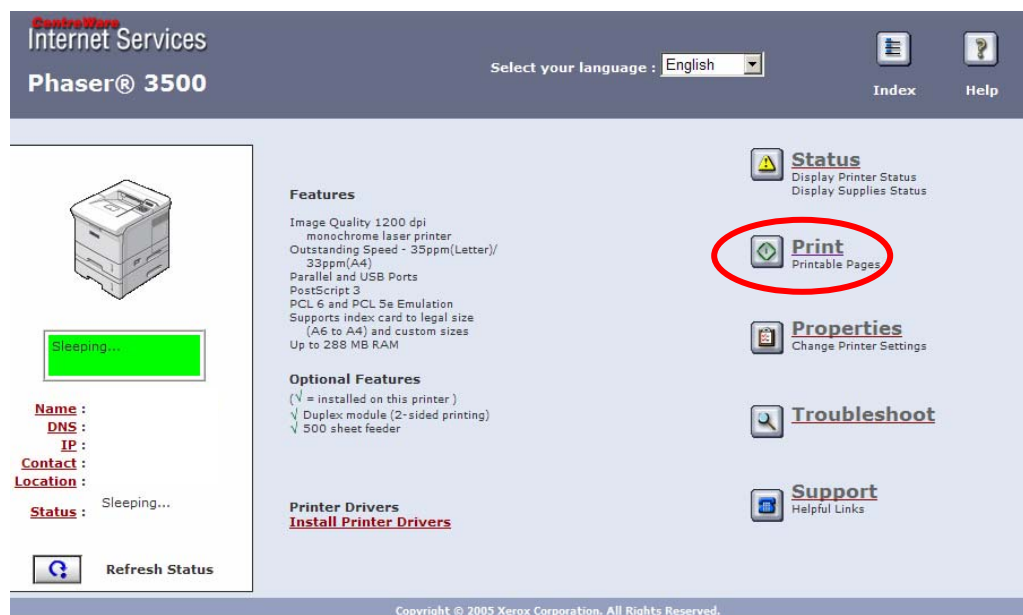
**Caution:** Some of the printer's network settings may be changed from their present value back to the factory default values by the firmware update. It is recommended that customers save the configuration page and use it as a reference to restore the printer's settings after the firmware update is complete.

## I. Updating a Phaser 3500 using a TCP/IP Network and CWIS

**Note:** This is the preferred method for installing the firmware update for most environments.

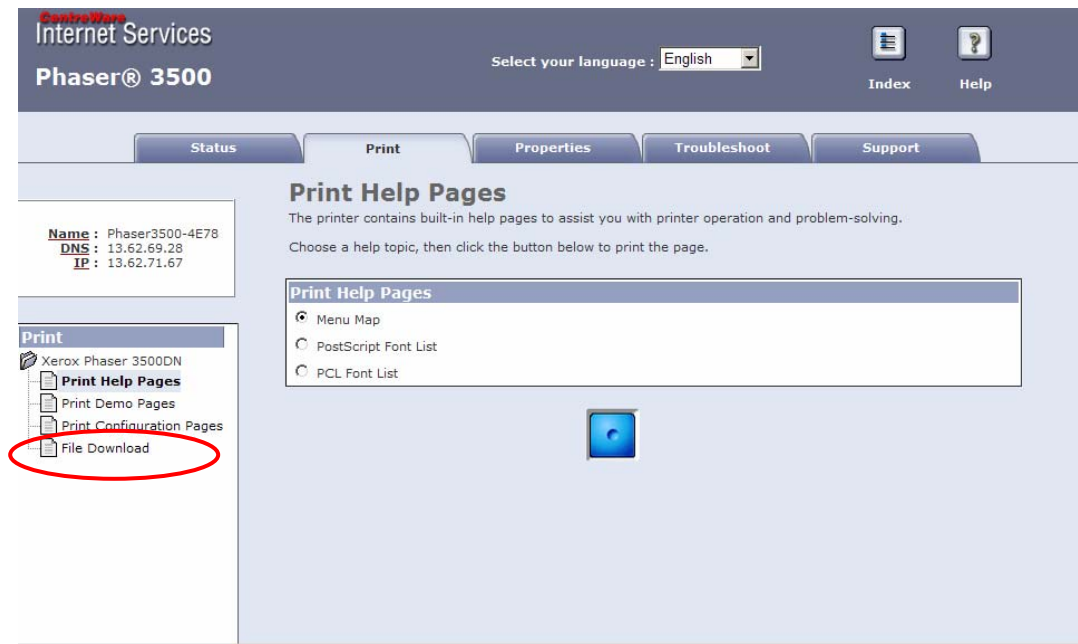
1. Launch your preferred web browser on your computer. Microsoft Internet Explorer, Netscape Navigator, Apple Safari, or most other web-browsers are supported.
2. Enter the TCP/IP address of the printer or its DNS network name in the web browser's address bar, and press Return or Enter to open the page. The address bar is typically at the top of a browser window.
3. Click on the "Print" button in the list of functions on the right side of the page.  
*Shown in the bottom-right red oval.*

**Figure 1: Enter the printer's address and select the "Print" item**



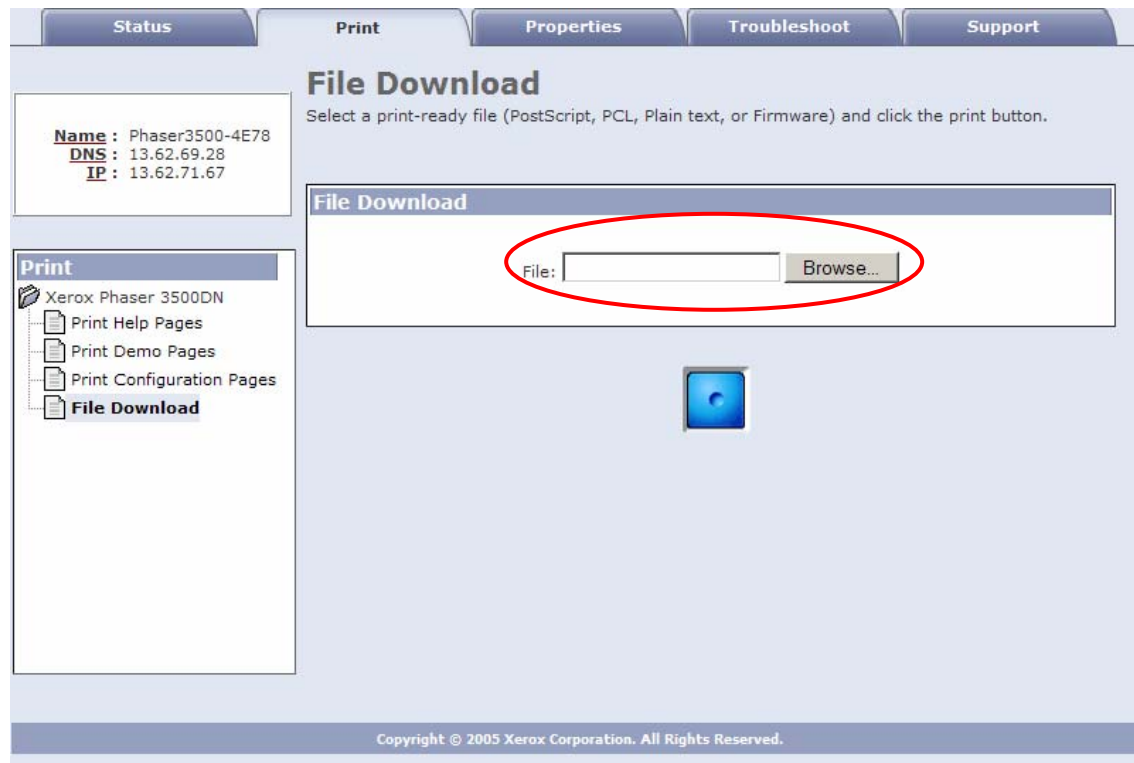
4. Click on the “File Download” link in the list of options on the left side of the page. *Shown in the red oval on the left side of the page.*

**Figure 2: Select the "File Download" section**



5. Click the “Browse” button. In the resulting file open window, select the firmware update file named “firmware.PS” that is provided as part of this package. *Shown in the red oval.*

**Figure 3: Select the firmware update file and press the green button to send it.**



6. Click the Blue button to transmit the firmware update to the printer.
7. The printer restarts automatically when the update process is complete.

**Caution:** *Do not attempt to cancel the firmware update process or turn off the printer power during the update. The printer might be left in an inoperable state that requires service. The printer automatically restarts after the firmware update process is complete.*

**Note:** It is recommended to Reset Connection Setup and Reset NIC from the printers control panel after the Network Firmware has been upgraded. The Reset Connection Setup and Reset NIC menu items can be selected under the Connection menu of the printer's front panel.

8. Restore the printer's settings to their previous values shown in the configuration page printed earlier. Settings may be changed at the printer's front panel interface, or through CentreWare IS using a web browser.