



imaginative solutions.

# Hardware Installation and Startup Guide

Imation Matchprint™ Professional Server  
Version 2.0

## Contents

<b>PRODUCT SAFETY AND COMPLIANCE .....</b>	<b>2</b>
<b>SPECIFICATIONS.....</b>	<b>4</b>
<b>UNPACKING .....</b>	<b>5</b>
<b>CART ASSEMBLY .....</b>	<b>6</b>
<b>SERVER INSTALLATION AND CABLING.....</b>	<b>7</b>
<b>PRINTER SETUP .....</b>	<b>11</b>
<b>PRINTER CALIBRATION .....</b>	<b>12</b>
<b>SPECTROCAM TIPS AND TROUBLESHOOTING.....</b>	<b>18</b>
<b>SYSTEM TROUBLESHOOTING .....</b>	<b>19</b>
<b>HOW TO REPLACE THE BATTERY.....</b>	<b>20</b>

## Product Safety and Compliance

### Warning

Do not modify or use any AC power cord other than the one included with shipping.

In some cases, the supplied power cord may not be compatible with the AC wall outlet in your region. If this is true, you must obtain a suitable power cord that meets the following criteria:

- The cord must be rated for use at the AC voltage available, with a current rating that is at least 125% of the current rating of the product.
- The AC plug end must be terminated in a grounding-type male plug designed for use in your region. The plug ends must be labeled or marked to indicate they have been certified by an agency acceptable in your region.
- The connector at the product end must be an IEC 320, sheet C13, female connector (or the equivalent EN 60 320 connector.)
- The cord must be less than 14.8 feet (4.5 meters) long and, for use in Europe, be created with <HAR> (harmonized) or VDE certified cordage.

### Warning

1. The user must never remove chassis covers. Some system circuitry retains voltage even when the system is turned off. Only qualified service technicians should remove chassis covers.
2. There are no user-serviceable components in the Imation server. Refer all system repair to a qualified service technician.

### Warning

The power supply voltage standby circuit is active when the computer is turned off. Ensure that the computer is disconnected from its power source and from all telecommunication links, networks, or modem lines whenever the chassis cover is removed. Do not operate the computer with the cover removed. Only qualified service technicians should remove chassis covers if repair or component replacement is required.

### Warning

Danger of explosion if the battery is incorrectly replaced. Replace only with the same or equivalent type recommended by the equipment manufacturer. Discard used batteries according to manufacturer's instructions.

## Agency Approvals

U.S.	FCC Class B UL 1950 standard testing
Canada	Canadian EMI Class A CSA 950
Europe	CISPR 22 Class B CE Mark EN 60950 LUD
The radiated and conducted emissions are per EN 55022 class B limits. The radiated and conducted immunity are per EN 55024 class B limits.	
<p>The Imation Matchprint™ Professional Server fulfills the following European Directives and their current amendments:</p> <p>73/23/EEC, Low Voltage Directive (LVD) and 89/336 ECC Electromagnetic Compatibility Directive.</p> <p>Dieses Produkt "IMPS" erfuehlt die Anforderungen der folgenden europaischen Richtlinien und deren derzeit gueltigen Ergaenzungen:</p> <p>73/23/EWG      Niederspannungsrichtlinie 89/336/EWG      Richtlinie ueber elektromagnetische Vertraeglichkeit</p>	

## Radio Frequency Interference Notice (USA)

This equipment has been tested and found to comply with the limits for a Class B digital device, pursuant to Part 15 of the FCC Rules. These limits are designed to provide reasonable protection against harmful interference in a residential installation. This equipment generates, uses, and can radiate radio frequency energy and, if not installed and used in accordance with the instructions, may cause harmful interference to radio communications. However, there is no guarantee that interference will not occur in a particular installation. If this equipment does cause harmful interference to radio or television reception, which can be determined by turning the equipment off and on, the user is encouraged to try to correct the interference by one or more of the following measures:

- Reorient or relocate the receiving antenna.
- Increase the separation between the equipment and the receiver.
- Connect the equipment into an outlet on a circuit different from that to which the receiver is connected.
- Consult the dealer or an experienced radio/TV technician for help.

Any changes or modifications not expressly approved by the grantee of this device could void the user's authority to operate the equipment. The customer is responsible for ensuring compliance of the modified product. Only peripherals (computer input/output devices, terminals, printers, etc.) that comply with FCC class B limits may be attached to this computer product. Operation with non-compliant peripherals is likely to result in interference to radio and TV reception.

All cables used to connect peripherals must be shielded and grounded. Operation with cables, connected to peripherals, that are not shielded and grounded may result in interference to radio and TV reception.

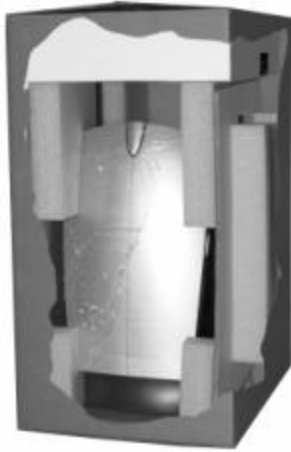
If a Class A device is installed within this system, then the system is considered a Class A system. In this configuration, operation of this equipment in a residential area is likely to cause harmful interference.

## Radio Frequency Interference Notice (CDN)

This Class B digital apparatus complies with Canadian ICES-003.

## Specifications

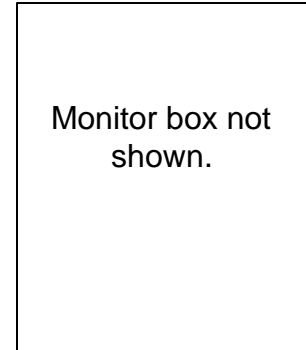
The Imation Matchprint™ Professional Server comes in three boxes.



**Server and cables**



**Cart (optional)**



**Monitor**

### Shipping Carton Specifications

IMN part number	Description	Dimensions L x W x H	Weight Lbs.
74-0401-9321-6	Imation Matchprint™ Professional Server	30" x 30" x 20"	50
74-0401-9539-3	Cart	32.75" x 29.5" x 37.75"	67
66-0000-1958-9	Monitor	19.25" x 9.75" x 20"	16

### Equipment Specifications

<b>Server Dimensions:</b> Height: 22" (558 mm) Length: 19.5" (495 mm) Width: 12" (305 mm) Weight: 34 lbs. (16.5 kg)	<b>Keyboard Dimensions:</b> Width: 18" (457 mm) Length: 7" (178 mm) Height: 1.75" (44.5 mm) Weight: 1 lb. (0.45 kg)
<b>Server Specifications:</b> Voltage: 115 – 230 VAC Current: 10/5 Amps. Frequency: 50/60 Hertz	<b>Video Monitor – LCD</b> Width: 15.5" (394 mm) Height: 16" (406 mm) Length: 7" (178 mm) Weight: 12 lbs. (5.45 kg)
<b>Environment:</b> Temperature 68° - 90° F (16° - 32° C)	<b>Video Monitor Specifications:</b> Voltage: 100-240 VAC Current: 1 Amp Frequency: 50/60 Hertz

## Unpacking

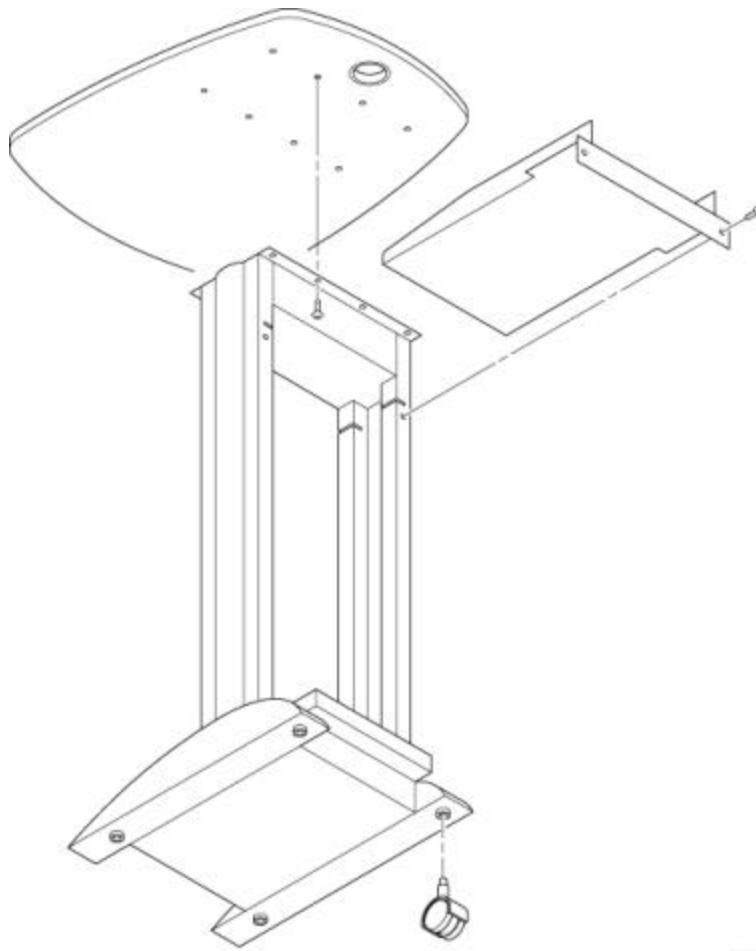
Unpack the **Imation Matchprint™ Professional Server**. The following items are included in your shipping box:

- Imation Matchprint™ Professional Server
- Monitor
- Keyboard
- Mouse
- Print cable
- Scan cable
- Power cable
- Cart (not shown, optional)



## Cart Assembly

Assemble the cart table-top, shelf and wheels as shown in the following graphic:



PF-355A

## Server Installation and Cabling

1. Position the system as shown in the following graphic.

The monitor and Imation Matchprint™ Professional Server should be located within 10 feet of the DC12 copier. The CPU should be placed in a location that provides sufficient airflow clearance. The monitor should be positioned on a solid table or cart.



2. Connect the system cables to the back of the **Imation Matchprint™ Professional Server** as follows:

---

✓ **Note**

All external peripheral cables are designed so the connector can only be inserted in one orientation. Check the orientation of the connector if the cable does not connect easily. Do not use excessive force to connect a cable.

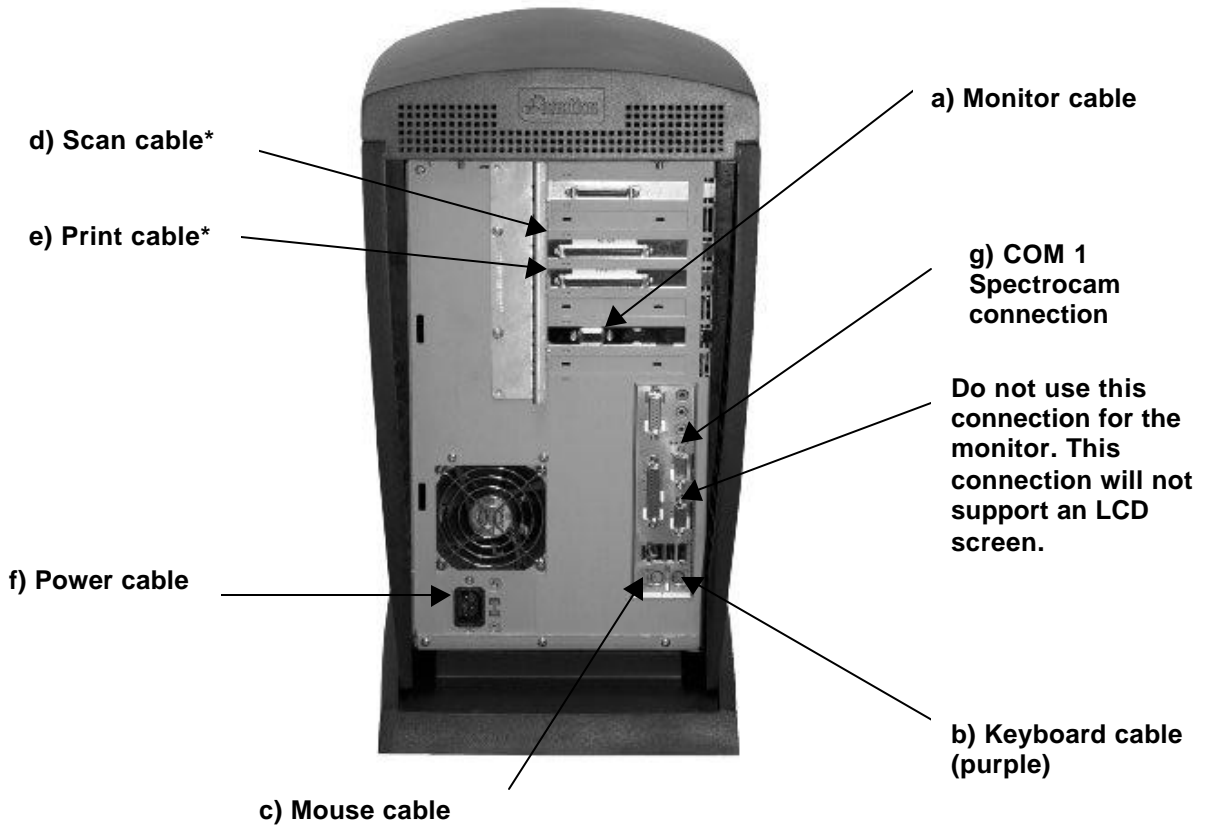
---

- a) Connect the **monitor cable** to the location shown in the graphic. The cable with the blue connector is the monitor cable. (**Do not connect the blue end of the monitor cable to the blue connector location. Use the location shown in the graphic on page 6.**)
- b) Connect the **keyboard cable** to the purple connector on the Imation server. The keyboard cable has a corresponding purple connector.
- c) Connect the **mouse cable** to the corresponding connector on the Imation server.
- d) Connect the **scan cable** latched-end to the Imation server and the thumbscrew-end to the Xerox DocuColor 12™ copier. The scan cable is identified by a label on the connector.
- e) Connect the **print cable** latched-end to the Imation server and the thumbscrew-end to the Xerox DocuColor 12™ copier. The print cable is identified by a label on the connector.

- f) Connect the **power cable** to the Imation server and AC power outlet.
- g) If your Xerox DocuColor 12 LP requires a Spectrocam external calibration device, connect the **Spectrocam** to the COM 1 port.

**⚠ Warning**

Do not modify or use any AC power cord other than the one included with shipping.

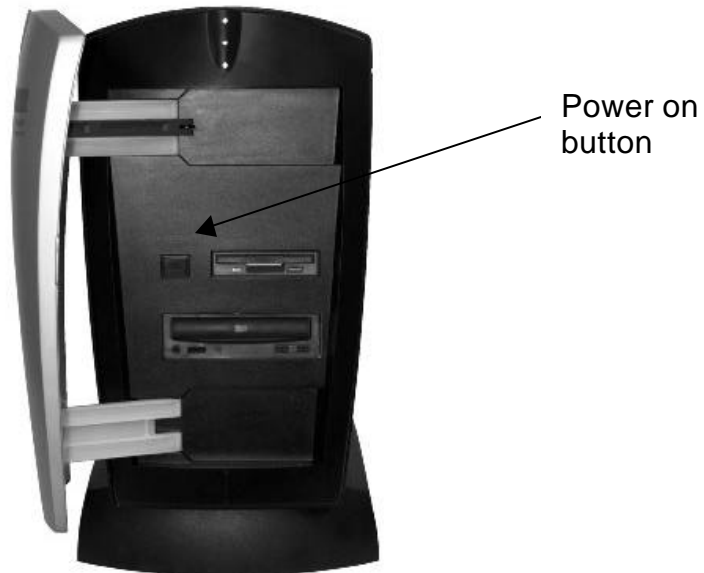


\* The Xerox DocuColor 12™ copier thumbscrew-end connections for both the print and scan cables are shown in the following graphic.





3. Power up the system by pressing the power switch located behind the front cover as shown in the following graphic.



The **Imation Matchprint™ Professional Server** software comes preloaded. System power up takes about 30 seconds. A screen prompt appears saying: “Please select operating system to start.” Leave the default selection as **Imation Matchprint™ Professional Server**. The system will automatically boot after 5 seconds.

4. When the following system prompt appears, press **Ctrl + Alt + Delete** to log on.



5. Enter log on information as follows:

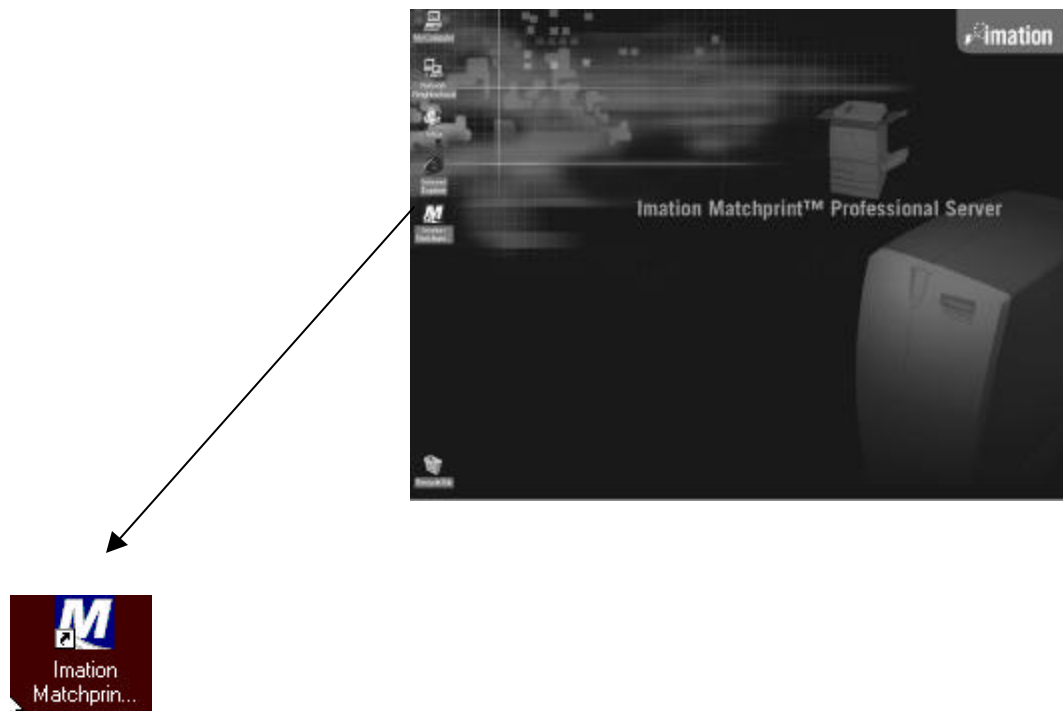
**User name:** Administrator

**Password:** (No password is required.)

**Domain:** (No domain entry is required. Server is not connected to a network.)



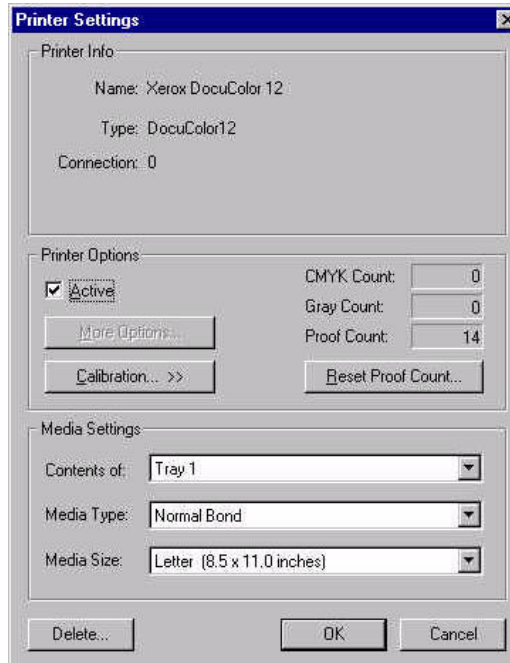
6. After the log on information is entered, click **OK**.
7. To launch the program, double-click on the **Imation Matchprint™ Professional Server** icon located on the desktop.



## Printer Setup

The software is shipped to you with the Printer Settings already set. However, you should confirm that the Media Settings (media type and size) for each tray match what is in your DocuColor 12.

1. From the **Printer** menu, select **Add Printer** or select **XeroxDocuColor 12** (or the name of the printer you need to change). The Printer Settings window displays:



2. Confirm the desired Media Settings for each tray and click **OK**.

The contents of each tray can vary from site to site, however standard tray setup is as follows:

**Contents of:** Tray 1 **Media Type:** Normal Bond **Media Size:** Letter (8.5 x 11 inches)

**Contents of:** Tray 2 **Media Type:** Normal Bond **Media Size:** LetterRotated (11 x 8.5 inches)

**Contents of:** Tray 3 **Media Type:** Normal Bond **Media Size:** Legal (8.5 x 14 inches)

**Contents of:** Tray 4 **Media Type:** Normal Bond **Media Size:** Tabloid (11 x 17 inches) or Heavyweight (12 x 18 inches)

**Contents of:** Tray 6 (High Capacity Feeder) - *Optional* **Media Type:** Normal Bond **Media Size:** Letter (8.5 x 11 inches)

### Notes:

Tray 5 is a manual feed tray located on the left side of the Xerox DocuColor 12. (Tray 5 is not configured here.)

Load paper so the watermark wording is face down in the tray.

## Printer Calibration

For color critical customers, Imation recommends daily calibration and recalibration each time the printer is serviced.

Printer calibration can be performed internally by using the DocuColor 12™ built-in scanner or by using the Spectrostar™ Spectrocam™, an external measurement device, on the DocuColor 12™ LP. Both procedures are described in this section. If calibration is to be performed using the Spectrocam, please go through the following **Spectrocam™ Setup** instructions before beginning the calibration process.

If calibration is to be performed using the DocuColor 12 scanner, please skip to the section titled, **Calibration Procedure**.

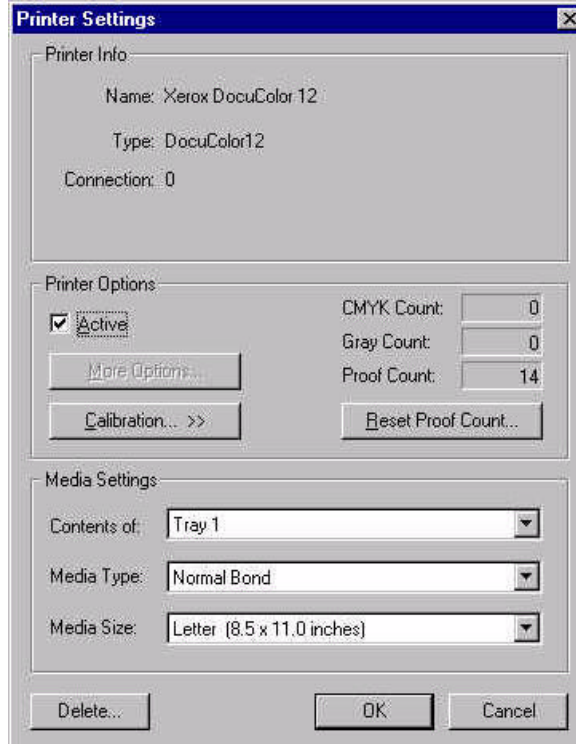
### Spectrocam™ Setup

1. Shut down the computer.
2. Make sure you have connected the Spectrocam™ to the COM 1 (or appropriate) serial port on the back of the **Imation Matchprint™ Professional Server**.
3. Plug the Spectrocam power connector into the AC adapter and then plug the AC adapter into a power outlet.
4. Power on the computer.
5. Launch the **Imation Matchprint™ Professional Server** software.

**Note:** Always disconnect the Spectrocam™ from the AC power supply before removing the Spectrocam™ from the Imation Matchprint Professional Server.

### Calibration Procedure

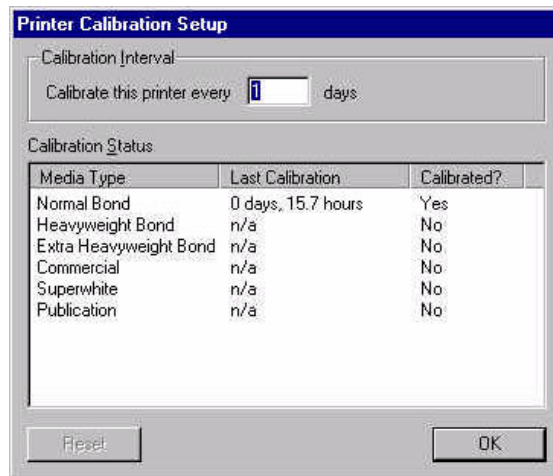
1. From the **Printer** menu, select **XeroxDocuColor 12** (or the name of the printer requiring calibration). The Printer Settings window displays.



2. Click on **Calibration** to display menu selections **Perform Printer Calibration** and **Printer Calibration Setup**.



3. Select **Printer Calibration Setup** to display the following setup screen:



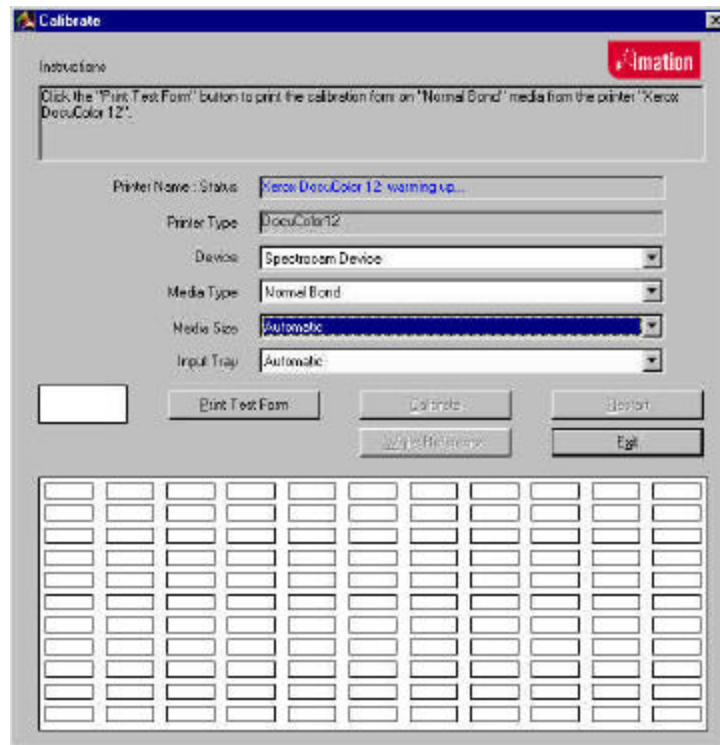
4. Enter how often the printer requires calibration.

The **Last Calibration** column displays the time elapsed since a particular media has been calibrated. Uncalibrated medias display "n/a" in this column. If the time elapsed is longer than the calibration interval, the "Calibrated?" column will say No.

**Notes:**

- Selecting the **Reset** button, nullifies the most recent calibration and returns the selected media to its default setting.
  - The “Calibrate this printer every \_\_\_ days” is specific to the printer only. The “Last Calibration” number indicates when the printer was last calibrated with specified media. For example, if the printer is set to be calibrated every 3 days, it may have been 6 days since it was last calibrated with commercial paper and 2 days since it was last calibrated with bond. However, regardless of the media type, the printer is set to be calibrated every 3 days.
5. Click **OK**.
  6. From the **Calibration** menu, select **Perform Printer Calibration**. The following screen appears:

**Note:** All jobs in the queue are put on hold during calibration except the jobs currently printing.



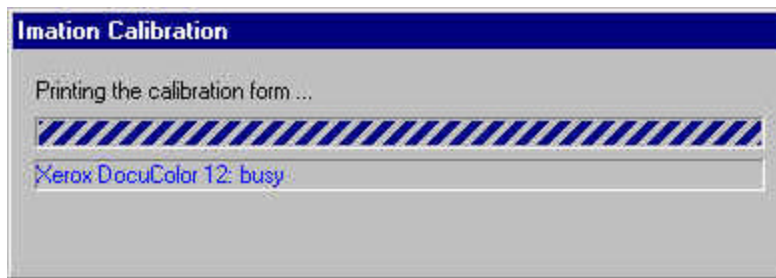
7. From the **Device** drop-down list box, choose either the **DocuColor 12 Scanner** or the **Spectrocam Device**.
8. From the **Media Type** drop-down list box, select the media to be calibrated.

**Note:** Transparency media cannot be calibrated.

9. From the **Media Size** drop-down list box, select the media size on which to print the calibration form.
10. From the **Tray** drop-down list box, select the input tray containing the specified media.

The input tray can be specified if the user wants to calibrate the media contained in a specific tray of the DocuColor 12. An **Automatic** selection chooses the input tray if no input tray is specified. If ExtraHeavyweight or an Imation/Xerox co-branded media is selected, the input tray defaults to Manual Feed. In this case, the user is not able to change the input tray.

11. Click on **Print Test Form** button. A progress bar appears as the form prints:



12. When the form printing is complete:

- Go to [Calibrating with the DocuColor12 Scanner](#) for scanner calibration.
- Go to [Calibrating with the Spectrocam](#) for Spectrocam calibration.

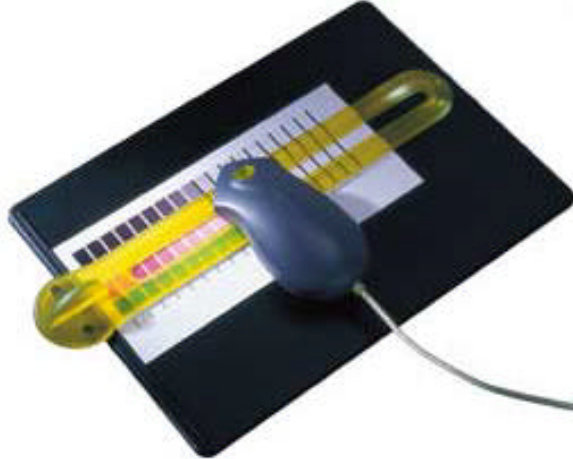
### Calibrating with the DocuColor12 Scanner

1. Place the calibration form on the platen of the DocuColor 12 and click **Calibrate**.
2. If the calibration is successful, the screen display says, "The calibration process was successful. You may now calibrate another media."
3. Click **OK** to go back to the calibration window.

**Note:** If the calibration process fails, check to make sure the test page is properly positioned on the platen. The scanable area is 11"x 17". If the calibration test form is outside this area, calibration will fail.

## Calibrating with the Spectrocam™

1. Place the test form and ruler on the black scanner plate and position the measurement device on the first patch on the upper, left corner.
2. Click on the **Calibrate** button.



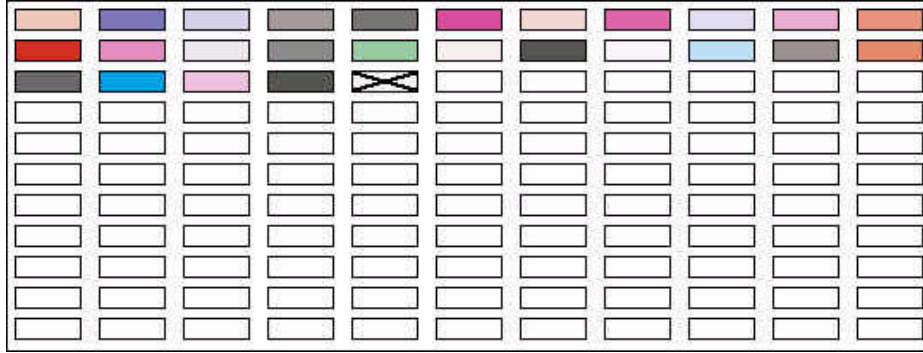
If the Spectrocam was not previously calibrated, a prompt directs you to calibrate the white reference. Place the measurement device on the white target reference and touch the green sensor to calibrate. After calibrating with the white reference, reposition the measurement device on the first patch on the upper, left corner of the test form.

3. Touch the green sensor and move the device slowly down the first row. When you complete the first row, reposition the Spectrocam over the first patch of the second row and touch the green sensor again to begin measuring the second row. Continue in this fashion until all rows are read.

**Important Note on Calibrating the Spectrocam™:** Every Spectrocam™ needs to be calibrated against its own unique White Reference Target (an absolute white point) before taking measurements. Take good care of your Reference Target. For additional information, please see the Spectrocam™ user documentation.

- Patches are read from left to right in a *slow, steady* manner. The color patches appear on the screen as they are measured. It should take approximately 6 to 8 seconds to completely scan one row.
- If you move too slowly or too rapidly, patches are not read correctly. Within the calibrate dialog an X appears on any patch that is miss-read. If this happens, reposition the device on the first patch of that row and touch the sensor to start the patch reading of that row again. The Instruction box at the top of the window will indicate any action you must take regarding measurement readings.

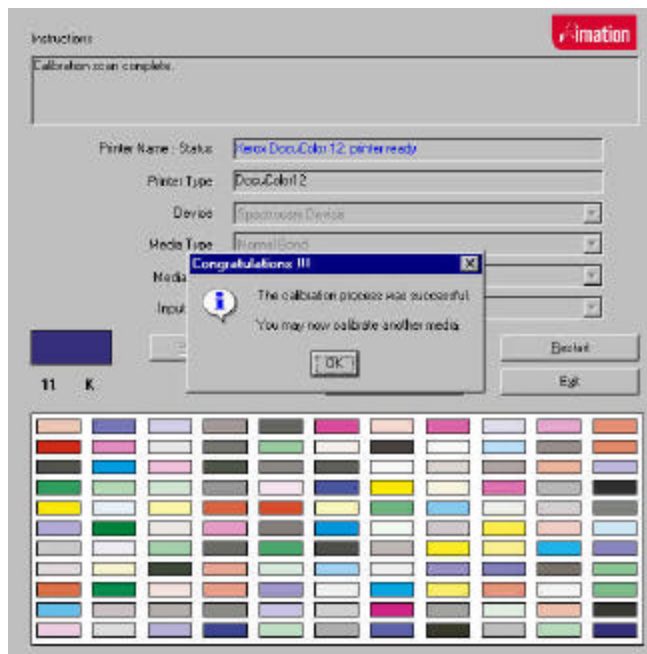




To read the last two rows, you will need to move the test form up so the Spectrocam rests on the black scanner plate.

**Note:** The system times out after 10 minutes of inactivity. Instructions appear directing the user to restart calibration.

If the calibration is successful, the following message appears: "The calibration process was successful. You may now calibrate another media."



4. Click on **OK** to return to the calibration window.
5. Click OK to exit out of each dialog box.
6. Close delivery with Field Work Scheduling System (FWSS).

Hardware installation is complete.

## Spectrocam TIPS and Troubleshooting

### Calibrating the Spectrocam

- Make sure the Spectrocam is calibrated with the white target reference that was shipped with your Spectrocam. The serial numbers on the bottom of the white target reference target and the Spectrocam must match. Setting the white reference to a different target can result in inaccurate printed color.
- When measuring the white target reference, be sure the device is seated correctly.

### Scanning the Test Form

- Make sure the printed test form is properly aligned to the black scan plate. The Spectrocam must read the first patch directly in the center. If a white edge is detected, calibration will fail.
- Make sure the Spectrocam is securely seated in the guide ruler and not tipped while you read patches. Tipping or miss-aligning the Spectrocam while on the guide ruler will cause errors.
- The green sensor on the top of the Spectrocam responds to transitions from light to dark. The sensor must be activated to measure each row. Inadvertently covering the sensor can prematurely initiate the measurement sequence.
- Listen for the flashlamp before you move off the first patch. Sometimes there is a slight delay before it begins to measure.
- Reading patches too rapidly is a common error. Scanning one row should take about 6 to 8 seconds.

 **Caution**

It is possible to turn the computer off using the front panel switch while the computer is operational. Pushing in the power switch and holding the switch in until the computer beeps, then releasing the switch will shut the computer off. However, doing this may result in loss of data and corruption of the computer operation system or application. The computer should only be shut off using the front power switch when the operating system becomes unavailable for shutting off the computer.

---

✓ **Note**

Mailbox locations are available on the Imation Matchprint™ Professional Server only if mailbox is enabled on the Xerox DocuColor 12™ copy sorter. Contact your Xerox technician to enable this setting.

---

All other user information is available online through the **Help** menu selection or as a printable PDF file on the CD-ROM. After the **Imation Matchprint™ Professional Server** is launched, select **Help** -> **Read the User's Guide** to access the online help information.

## System Troubleshooting

- Make sure all cable connections are secure.
- Make sure the DocuColor 12 copier is powered on.
- Make sure the Imation Matchprint™ Professional Server is powered on.
- If both systems are on and the Imation server is still not responding correctly, power off then power on the DocuColor 12 copier. Then power off and power on the Imation server.

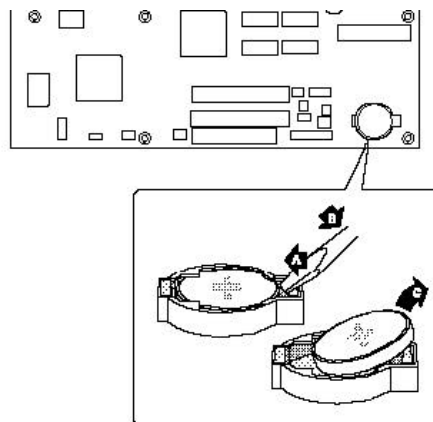
## How to Replace the Battery

When your computer is turned off, a lithium battery keeps the time-of-day clock and the values in CMOS RAM current. The battery is located on the server mother board as shown below.

The battery should last about seven years. When the battery begins to die, it loses voltage; when the voltage drops below a certain level, the Setup program settings stored in CMOS RAM (for example, the date and time) might not be accurate. Replace the battery with an equivalent one.

To replace the battery, follow these steps:

1. Turn off all peripheral devices connected to the computer. Turn off the computer. Disconnect the power cord.
2. Remove the computer cover. Locate the battery on the motherboard as shown in the following figure.



3. With a medium flat-bladed screwdriver, gently pry the battery free from its socket. Note the orientation of the “+” and “-” on the battery.
4. Install the new battery in the socket, orienting the “+” and “-” correctly.
5. Replace the computer cover.

---

### ✓ Note

Do not expose batteries to excessive heat or fire. Keep all batteries away from children. Spent batteries must be disposed of at an approved recycling or disposal facility or in accordance with federal, state, provincial, municipal or local environmental control requirements. The customer agrees to abide by such disposal requirements as may exist in their jurisdiction and to indemnify Imation Corp. for any failure to do so.

---

 **Warning**

Danger of explosion if the battery is incorrectly replaced. Replace only with the same or equivalent type recommended by the equipment manufacturer. Discard used batteries according to manufacturer's instructions.