

Printing to Splash v4.0 From Windows 95/98

January 18, 1999

Splash Technology, Inc.

Sunnyvale, California USA

Trademarks and Copyright

Splash and the Splash logo are trademarks of Splash Technology, Inc. Windows 95 and Windows 98 are registered trademarks of Microsoft Corporation, DocuColor is a trademark of Xerox, Incorporated. AppleTalk is a registered trademark of Apple Computer, Inc. Novell NetWare is a trademark of Novell, Inc. Adobe, the Adobe logo, Adobe Illustrator, PostScript, Adobe PStool, Adobe Type Manager, Adobe PageMaker and Adobe Photoshop are trademarks of Adobe Systems Incorporated, which may be registered in certain jurisdictions. QuarkXPress is a registered trademark of Quark, Inc. All other brand or product names are trademarks of their respective holders.

Copyright © 1999 Splash Technology, Inc.

PN: 0014719-0102 Last revised: January 18, 1999. Your rights of ownership are subject to the limitations and restrictions imposed by the copyright laws as outlined below.

PROPRIETARY RIGHTS NOTICE. The digitally encoded machine readable outline data for producing the type-faces provided as part of your laser printer is copyrighted © 1981 Linotype-Hell AG. Copyright © 1993 Adobe System Incorporated. All Rights Reserved. This data is the property of Linotype-Hell AG and Adobe Systems Incorporated and may not be reproduced, used, displayed, modified, disclosed or transferred without the express written approval of Linotype-Hell AG and Adobe Systems Incorporated.

It is against the law to copy, reproduce, or transmit including, without limitation, electronic transmission over any network any part of the manual or program except as permitted by the Copyright Act of the United States, Title 17, United States Code. Under the law, copying includes translation into another language or format. However, you are permitted by law to write the contents of the program into the machine memory of your computer so that the program may be executed. You are also permitted by law to make working copies of the program, solely for your own use, subject to the following restrictions: (1) Working copies must be treated in the same way as the original copy; (2) If you ever sell, lend, or give away the original copy of the program, all working copies must also be sold, lent, or given to the same person, or destroyed; (3) No copy (original or working) may be used while any other copy (original or working) is in use except within the terms of this license. The copyright notice that is on the original copy of the program must accompany any working copies of the program.

The above is not an inclusive statement of the restrictions imposed on you under the Copyright Act. For a complete statement of the restrictions imposed on you under the copyright laws of the United States of America, see Title 17, United States Code.

Table of Contents

Introduction	5
System Requirements	5
Chapter 1 — Setting Up for Printing to Splash	7
Connecting Your Computer to the Splash Printer	7
Installing the Splash Custom Adobe PostScript Printer Driver	8
Installing the Windows 95/98 PostScript Printer Driver	9
Chapter 2 — Printing to Splash	17
Setting Splash Print Options with the Splash Custom Adobe Printer Driver	17
Setting Splash Print Options with the Windows 95/98 Printer Driver	18
Setting Splash Paper Options	19
Setting Splash Device Options	22
Printing to the Splash Server	23
Using the Splash Print Options	24
Setting Splash Color Options	24
Setting Splash Tray Options	27
Providing User Information	31
Setting Other Splash Options	32
Creating a PostScript or EPS File	36
Printing an Acrobat PDF File	38
Deleting a Print Job	38
Splash Color Correction	39
Splash Color Correction Notes	40
Chapter 3 — Using the Splash Web Queue Manager	41

Chapter 4 — Application Notes	49
General Driver Notes	49
Print Command Options	49
Accidentally Printing EPS Files	49
Deselect PostScript Error Option Before You Print	49
Canceling a Print Job	49
Duplicate Cover Pages	50
Interaction With the Printers Control Panel	50
Jobs with Text or Fill Patterns Over TIFF May Not Print Correctly	50
Some Images Print With Limited Color	50
Printing Gradient Fills	50
Network Notes	50
Novell NetWare Notes	50
PC MACLAN Connect Notes	51
Application Notes	52
Supported Windows 95/98 Applications	52
Adobe Illustrator Notes	52
Adobe PageMaker for Windows Notes	53
Adobe Photoshop v3.0 for Windows Notes	54
CorelDraw Notes	54
Deneba Canvas Notes	55
MacroMedia FreeHand for Windows 95/98 Notes	55
QuarkXPress Notes	57
Microsoft Excel Notes	58
Index	59

Introduction

The Splash™ Windows 95/98 driver allows a PC running Microsoft® Windows 95 or Windows 98 to print to the Splash DocuColor Pro. The driver software lets your Windows 95/98 applications communicate across an appropriate network bridge with a Splash Server, which processes your print jobs and sends them to the printer/copier. Thus, you can develop documents with Windows-based applications, and then print your work on the Splash printer.

This on-line manual describes how to install and use the Splash driver for Windows 95/98. If you are not already familiar with Windows 95/98 procedures and conventions, please refer to your Microsoft documentation before you attempt to print to Splash.

System Requirements

The Splash Windows 95/98 driver requires the following hardware and software:

- An IBM AT or PS/2 (or 100%-compatible) computer with an 80486 or higher processor
- One 3.5" floppy disk drive, high-density (1.4MB) capacity
- Hard disk drive
- CD-ROM Drive
- At least 8 MB of RAM
- Microsoft Windows 95 or Windows 98
- Network hardware that works with the built-in Windows 95/98 drivers to connect your PC to the Splash print queue on the Novell or NT server

Refer to your Windows 95 or Windows 98 documentation for a description of compatible hardware.

Chapter 1

Setting Up for Printing to Splash

This chapter explains how to connect your PC to the Splash printer/copier and how to install the Splash Windows 95/98 Client software. You can use the Splash custom Adobe PostScript Printer driver or the standard Windows 95/98 PostScript Printer Driver. In most cases, you should use the Splash custom driver as this is the only way that you can access all the special features of your Splash printer.

Connecting Your Computer to the Splash Printer

Before you can install the Splash Windows 95/98 Client software, you must establish a network connection to the Splash printer. This connection can be made through software that connects the PC to an AppleTalk network, or through a Novell NetWare or NT print spooler that has been configured for printing to Splash.

If your PC can connect to a Windows NT or Novell NetWare server, you can have a print spooler set up for printing to Splash. The system administrator responsible for setting up print spoolers should refer to the appropriate Windows NT or Novell NetWare documentation, and the Splash NetWare Direct documentation for instructions on how to do this. (See the chapter, “Setting Up TCP/IP and NetWare Direct Printing to Splash” in the *Splash Reference* on-line manual.)

If a Windows NT or Novell NetWare print spooler is not available, you must install an application such as MACLAN Connect to enable your PC to connect to an AppleTalk network.

Installing the Splash Custom Adobe PostScript Printer Driver

To install the Windows 95/98 Client software, use the *Splash CD-ROM* provided with the Splash server. When you install the Splash Windows 95/98 Client software, you must first exit any applications that use the software, or Windows 95/98 will not proceed with the installation.

To install the Splash Windows 95/98 client software and Splash custom printer driver:

1. Insert the *Splash CD-ROM* in your computer.
2. On the Windows 95/98 desktop, double-click the My Computer icon.
3. In the window that appears, double-click the *Splash CD-ROM* icon and then navigate to the **Splashwin\English\Win95cst** directory.
4. Double-click the “Setup” icon.
5. Click Accept to accept the End User License Agreement.
6. Click Next at the Adobe PS 4.2 PostScript Printer Driver Setup window.
7. When prompted whether to copy the setup program, click Next to accept the default answer, **No**.
8. Choose network printer and select the Splash Server queue, then click Next. You can click Browse to locate the Splash.
9. Click Next to ignore the screen that says “You specified a remote computer (or system) for which setup cannot determine the type of installed printer.”
10. Select the drive containing the *Splash CD-ROM*, and select the folder: `\AdobePS\ADOBE\PPD`.
11. Select the DocuColor Pro in the list and click Install.
12. Enter a printer name and click Next.

If you encounter the error “Different Versions Detected” make sure that you do not have any old printer description files installed. If you do, delete the files.
13. Select Continue.

The Splash printer is now properly installed.

Installing the Windows 95/98 PostScript Printer Driver

To install the Windows 95/98 Client software, use the *Splash CD-ROM* provided with the Splash Server. Before you install the Splash Windows 95/98 Client software, make a backup copy of the installation disk. Use the backup disk to do the installation.

When you install the Splash Windows 95/98 Client software, you must first exit any applications that use the software, or Windows 95/98 will not proceed with the installation.

To install the Splash Windows 95/98 client software:

1. Click the Start button, point to Settings, and then choose Printers. The Printers window appears.



2. Double-click Add Printer. The Windows Add Printer Wizard window appears.



3. Click Next to continue the installation process.



Choose Network Printer to tell Windows 95/98 that the Splash printer is connected to your computer over a network. Click Next to continue.

Windows 95/98 tells you to type the network path for your printer.



4. Type in the path to the Splash print queue on your Novell NetWare server, or choose Browse to select the Splash printer from the list of printers that appears.
5. If you print from MS-DOS-based applications, choose Yes; if not, choose No.
6. Click Next to continue.

Windows 95/98 tells you to select the manufacturer and model for your printer.



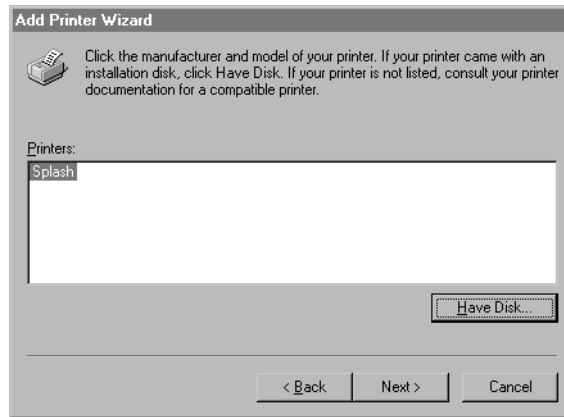
7. Click Have Disk.



8. Insert the *Splash CD-ROM* in your computer, and then click Browse

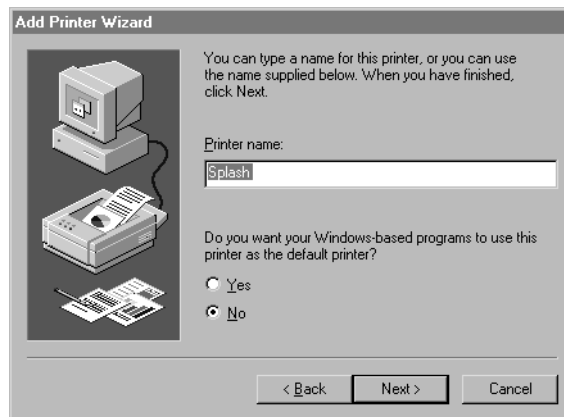
9. Open the **d:\Splashwin\English\Win95** directory on the *Splash CD-ROM*, select the file “spl95pr” and then click Open. (If necessary, change the letter of the drive containing the CD-ROM).

10. Click OK. Windows 95/98 shows a list of printer files from the Splash CD.



11. Select the Splash DocuColor Pro printer/copier.
12. Click Next to continue.

Windows 95/98 displays more options for setting up your PC for printing to Splash Server.



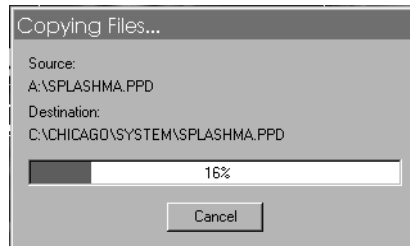
- If you want to change the name for the Splash printer/copier, type a new name in the text box. (This changes the name of the printer as it appears in the Printers window on your computer.)
- If you want the Splash printer/copier to be the default printer for your computer, choose Yes. Otherwise, choose No.

13. Click Next to continue.



14. Choose Yes to print a test page after installation of the printer software is complete. Click Finish to conclude setting Windows 95/98 printer install options.

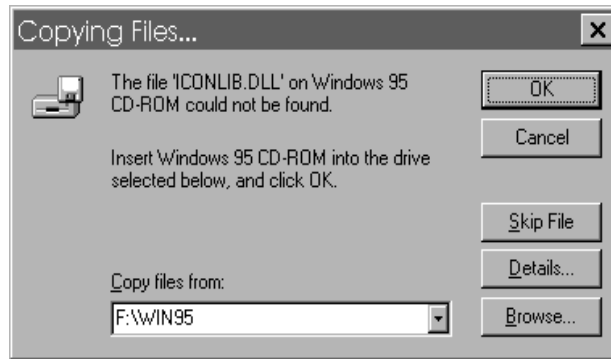
Software installation begins.



During installation, Windows 95/98 prompts you to insert a disk from your Windows 95/98 System Install disk set (or CD-ROM).

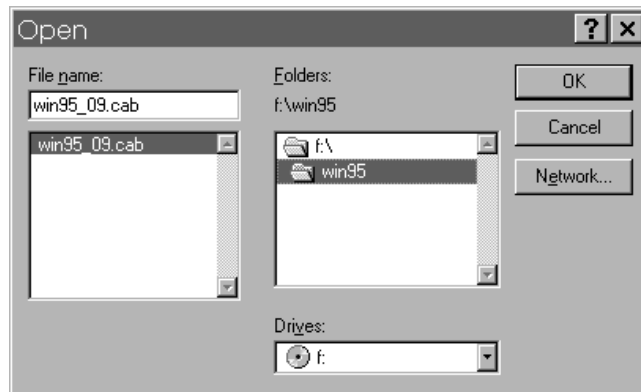


15. Click OK. Another Windows 95/98 message appears.

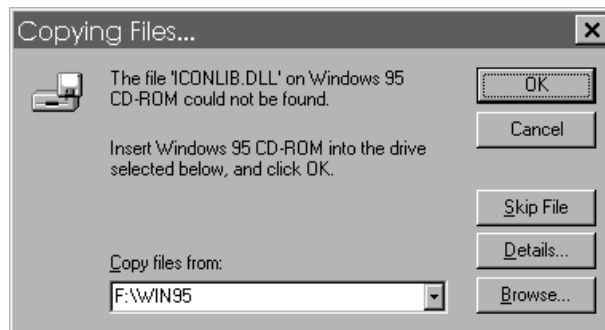


16. Insert the disk (or CD-ROM) in the drive on your computer and click OK.

The Windows 95/98 Open dialog box appears.

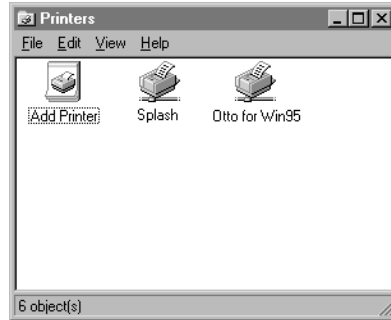


17. Locate and select the Windows 95/98 disk (or CD-ROM) in the Open dialog box, then click OK.



Windows 95/98 completes the installation of Splash Windows Client software.

After the Splash Windows 95/98 Client software is installed, the Splash printer appears in the list of printers available for your computer.



IMPORTANT: If you recently installed Windows 95/98 over a Windows 3.1 installation that had an existing Splash Windows Client driver for Windows 3.1 installed, the older driver may appear in your Windows 95/98 Printers Control Panel. You should delete the older Splash Windows Client driver from the Printers Control Panel.

Chapter 2

Printing to Splash

After you install the Splash Windows 95/98 Client software and connect to the Splash Server, you can print your documents as PostScript or EPS (Encapsulated PostScript) files.

Setting Splash Print Options with the Splash Custom Adobe Printer Driver

Before you print a document to Splash, select print options such as paper size and orientation, color correction, scaling and number of copies to print. This section describes how to set Splash print options with the Splash Custom Adobe Printer Driver.

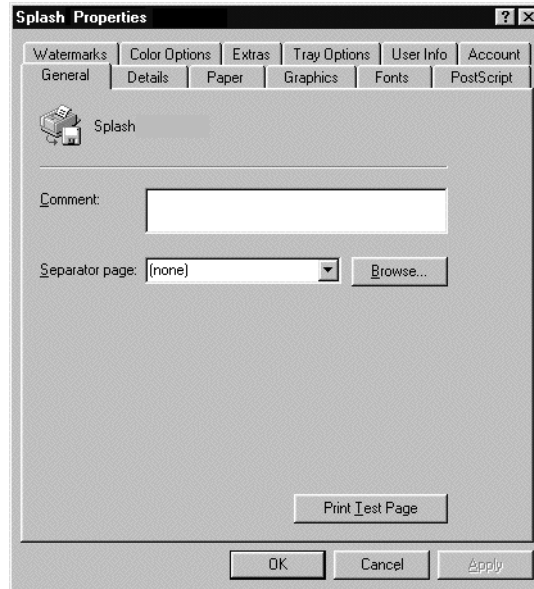
Many applications provide a “Printer Setup” or “Page Setup” command that lets you set Splash print options from your application. See the manual for your application for information.

To set Splash print options:

1. Click the Windows 95/98 Start button, point to Settings, and then choose Printers.
2. Select the Splash printer in the Printers window.



3. Choose Properties in the File menu (or Properties in the Printer menu if you have opened the Splash printer icon). The Splash Properties window appears.



Note: This document describes how to set the print options that are specific to Splash. These options appear when you choose the “Color Options,” “Extras,” “Tray Options,” and “User Info” tabs in the Splash Properties dialog box. Refer to the Adobe PostScript Printer Driver documentation for information about how to use options that appear when you choose other tabs.

Setting Splash Print Options with the Windows 95/98 Printer Driver

Before you print a document to Splash, select print options such as paper size and orientation, color correction, scaling, and number of copies to print. This section describes how to set Splash print options with the Windows 95/98 Printer Properties dialog box.

Many application provide a “Printer Setup” or “Page Setup” command that lets you set Splash print options from your application. See the manual for your application for information.

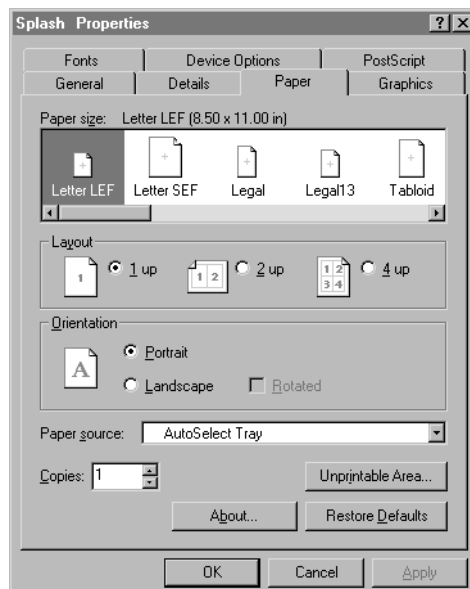
To set Splash print options:

1. Click the Windows 95/98 Start button, point to Settings, and then choose Printers.
2. Select the Splash printer in the Printers window.
3. Choose Properties in the File menu (or Properties in the Printer menu if you have opened the Splash printer icon). The Splash Properties dialog box appears.

Note: This document describes how to set the print options that are specific to Splash. These options appear when you choose the “Paper” and “Device Options” tabs in the Splash Properties dialog box. Refer to the Windows 95/98 On-line Help for information about how to use options that appear when you choose other tabs.

Setting Splash Paper Options

1. Click the Paper tab. The Splash paper options appear.



2. Select a paper size from the Paper Size list. If you select an option other than “AutoSelect Tray,” be sure the correct paper is installed in the tray you select in Step 5.

The page sizes DocuPac, Tabloid Bleed, A3 Bleed, A6, 4x6, B5SEF, and B5LEF only print from the bypass tray.

Note: You must select Heavyweight paper as the media type when you print to DocuPac page size. See “Setting Splash Tray Options” on page 27 for details.

When a paper size has an LEF-suffix (Letter LEF, for example), the paper is loaded with the long edge of the sheet feeding from the tray. When a paper size has an SEF suffix (such as A4 SEF), the paper is loaded with the short edge of the sheet feeding from the tray.

Note: Paper sizes that do not have an “SEF” or “LEF” suffix are handled as short edge feed (SEF) paper by the printer/copier.

The Splash Servers print all supported paper sizes and orientations at 400dpi in both directions. Page sizes print with a 4 mm margin at all edges.

Note: If you select a page size that is not supported by the DocuColor Pro, an error message requesting A6 size paper appears regardless of the page size requested.

3. Select a Layout for your document.

Layout lists the options for arranging pages on paper; 1, 2, or 4 document pages can appear on a single printer page.

4. Under Orientation, select Portrait, Landscape, or Rotated Landscape.

Note: Both “LEF” and “SEF” paper sizes can use any paper orientation.

5. Select a default paper tray from the Paper Source list.

If you select Auto Tray Select, the printer automatically selects a tray based on the page size of the document. You must choose Bypass Tray to use the manual feed option on the printer/copier.

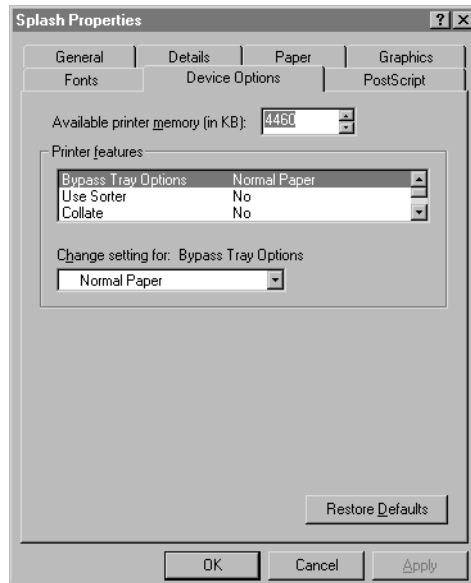
Note: For all applications except Adobe PageMaker 6, the Paper Source list contains two “AutoSelect Tray” options. Select either option to activate the AutoSelect feature.

Note the following when you print to the DocuColor Pro:

- Jobs printed to Splash that use the Tabloid Bleed and A3 Bleed page sizes always go to the top tray on the DocuColor Pro. The Face Down print option does not work with these page sizes. These jobs always print face up. If the DocuColor Pro is equipped with a sorter, Tabloid Bleed and A3 Bleed jobs printed on “Thick” paper type go to the top tray of the sorter.
 - Jobs printed to Splash that use the bypass tray and any paper type except “Normal” always go to the top tray on the DocuColor Pro. The Face Down print option does not work with these paper types. Jobs always print face up. If the DocuColor Pro is equipped with a sorter, jobs printed on “Thick” paper type go to the top tray of the sorter.
 - Jobs printed to the DocuColor Pro bypass tray cannot use the Splash Duplex (double-side printing) commands. Splash supports only single-sided printing to the bypass tray.
 - Jobs printed to Splash that use the A6 page size always go to the top tray on the DocuColor Pro. If the DocuColor Pro is equipped with a sorter, A6 jobs printed on “Thick” paper type go to the top tray of the sorter.
6. Enter the number of copies to print.
 7. Choose Unprintable Area if an application clips the outer edges of the graphics on the output pages. The paper’s unprintable margin area that is reported to the application can be reduced by modifying these values.
 8. When you have made all selections click OK. (Apply can be used to save intermediate selections.)

Setting Splash Device Options

1. Click the Device Options tab. Splash device options appear:



To set the print options that appear under Printer features, first select a Splash option from the list and then choose a setting for the print option in the “Change setting for:” list.

See “Using the Splash Print Options” on page 24 for complete descriptions of the Splash print options that appear in the Device Options tab.

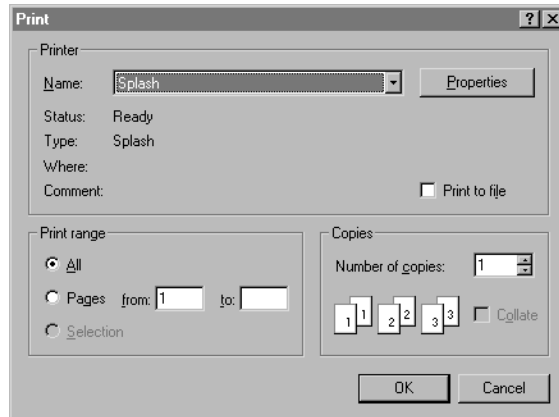
2. When you have made all selections for printing, click OK.

You are now ready to print your document to Splash. Other tabs in the Printer Properties dialog box allow you to set advanced print options that are not specific to the Splash Server. For information about the advanced print options in the other tabs, refer to the Windows 95/98 On-line Help.

Printing to the Splash Server

To print to the Splash printer/copier:

1. From the File menu of your application, choose Print.



The Print dialog box for your application may be simple, or it may contain many extra options for the special features of your application. Adobe Illustrator, for example, has a very simple Print dialog box. The Print dialog box for QuarkXPress has many print options. Custom menu items for Splash appear in the dialog box.

2. Select the print options provided by your application.

Some applications provide a Properties button in the Print dialog box. Click Properties to review and change the Splash print options you selected in the Printers Properties dialog box.

IMPORTANT: Before you print, be sure the page size and other print options match between the Windows 95/98 Client (Printers Properties dialog box) and your application. If the print options set in the application do not match those set in the Printers Setup dialog box, your job may have unexpected results.

3. Click OK to print.

Print jobs that are sent to the Splash Server through a Novell NetWare IPX connection (with Splash NetWare Direct) appear in the Splash Server print queue with the Novell NetWare login ID.

Using the Splash Print Options

This section describes how to use the special print features of the Splash Server. The options described in this section are set in the Device tab in the Windows 95/98 Printers Properties dialog box (see page 22).

Setting Splash Color Options

The Splash color options let you set up the printer/copier for four-pass color printing or grayscale printing, with contone or halftone screening. You can also apply Splash color correction to your print jobs.

Color Model

Select **Grayscale** or **Color** printing as a Color Model for your output. Grayscale images produce similar results with either mode; however, images process and print significantly faster in Grayscale mode than in Color mode.

Printer Mode

This option switches printer output between **Contone** (full color) output and **Screened** output. When Screened is selected, Splash applies halftone screening to the color image. In certain circumstances (such as documents composed primarily of large areas of saturated color), halftone screening produces better results in the printed output.

The screening method used when Screened is selected is configured at the Splash Server. The default screening method is Stochastic. See the *Splash DC Series 4.0 Set-Up Manual* for more information.

RGB Monitor Color Correction

Splash RGB Monitor Color Correction gives you simple-to-use, accurate, and consistent results for:

- Documents with mixed EPS and TIFF file types
- Documents created with “pre-press” applications (such as QuarkXPress) and by non-pre-press applications (such as Microsoft Word)

Splash uses advanced, proprietary techniques to accurately color correct mixed EPS, TIFF, PICT, and other “problem” page layout files that cannot be accurately corrected and printed by other CMS and RIP combinations.

To apply Splash RGB color correction to the print job, select “Enabled” in the **RGB Monitor Color Correction** menu, then select the appropriate RGB options from the Rendering Style, Gamma, and Whitepoint menus.

Select a **Rendering Style** that describes how the document was created:

- Choose **Graphics** for documents that were created with a computer graphics application. This option is designed to optimize printing of more saturated colors, such as those used in business presentation documents.
- Choose **Photographic** to match the colors of various scanned photographic images. This is the best option to choose for proofing photographic material.
- For printing onto transparency media, select the **Graphic OHP** style or the **Photographic OHP** style.

Note: The default Rendering Style is Photographic.

The **Gamma** and **Whitepoint** options adjust Splash color correction to simulate the monitor used to view and work with the document. For most purposes, choose **Normal (1.8)** for Gamma, and choose **Normal (D65)** for Whitepoint.

Gamma describes how a device reproduces tonal gradations. This setting applies to both the input device (such as a scanner) and the output device (such as a computer monitor or a printer). You can use this option to lighten or darken the RGB content of a particular document. The Gamma options are:

- Lightest (1.0)
- Light (1.4)
- Normal (1.8)
- Dark (2.2)
- Darkest (2.6)

Splash RGB color correction provides three standard whitepoint options. The options simulate various lighting conditions for proofing color documents. This option can be used to adjust the RGB content in a particular document relative to the whitepoint of the monitor. If flesh tones or red tones are too magenta, skies and other blues too cyan, and grass and greens too dark (almost bluish), change the Whitepoint setting from “Normal” to “More Blue.” If flesh tones and reds are too yellow, blues too purple, and greens too yellow, change the Whitepoint setting from “Normal” to “More Yellow.”

The Whitepoint options are:

- More Yellow (D50 Proofing)
- Normal (D65)
- More Blue (9300)

See page 39 for more information about Splash color correction.

CMYK Press Color Correction

To apply Splash CMYK color correction to the print job, select “Enabled” in the **CMYK Press Color Correction** menu, then select the appropriate option from the **Press Profile** menu.

- **SWOP** simulates SWOP inks.
- **Euroscale** simulates Euroscale press inks.
- **Enhanced** prints vivid colors on your output. (This profile is not intended for printing press proofs.)
- **Custom1** through **Custom10** are customizable options set at the Splash Server. Ask your Splash Server administrator about the current settings for these.

See page 39 for more information about Splash color correction.

Composite Spot Colors

Splash can simulate PANTONE, Toyo, HKS, or DIC spot colors when you add them to your documents. You must print your documents in composite mode to use this feature.

To print a composite document with simulated spot colors, set the Composite Spot Color type (PANTONE, Toyo, DIC, HK, HN, HE, or HZ) in the Splash Server Preferences (see the *Splash DC Series v4.0 Set-Up Manual* for instructions). The “Enable” item is selected in the **Composite Spot Colors** menu at the printer driver. Splash produces output that simulates the spot color on a printing press.

Note: This feature supports only 100% (non-tinted) spot colors. For best results, do not mix regular press CMYK colors in the same document with spot colors when you use this feature. (Some press CMYK colors may be interpreted as spot colors.)

Text Enhancement

These Splash features, when enabled, improve the printing of text and line drawings. The text enhancement options include:

- **Dynamic Edge Smoothing**—enhanced printing of text and drawings that contain fine lines by smoothing lines and avoiding “jaggies.”
- **Black Overprints**—100% black overprint, no knockout of underlying colors. This prevents any “halo” effect when printing black on top of another color.
- **Alternative Black (Un-mixed)**—substitutes a pure (C=M=Y=0, K=100) black for any R=G=B black in the document. This prevents the buildup of toner on the page and alleviates any shadows created by mis-registered mixed black.

Text enhancement options are set to “On” or “Off” for a print job.

Setting Splash Tray Options

These options let you specify the type of paper loaded in the bypass tray, and tells the printer/copier how to sort or collate the printed job.

Note: Some applications let you print the first page of your document from one paper tray, and all remaining pages from another paper tray. This feature does not work when you print to the Splash Server. All pages print from the paper tray you select for page one.

Bypass Tray Options

To use the bypass tray, you must select “Bypass Tray” in the Paper tab in the Printers Properties dialog box (see page 20), then specify the type of paper loaded in the bypass tray in the Device tab.

- Select **Normal Paper** to print on recommended paper between 16 to 24 pound.
- Select **Transparency** to print on 60 to 105 gsm Xerox transparencies with a white leading edge. For information on recommended transparencies, refer to the manuals supplied with your printer/copier. The only page size you can use with this bypass tray option is either A4 LEF (A4L) or Letter LEF (LetterL), depending on the copier configuration.
- Select **Heavy Weight Paper** to print on paper that is heavier than 24 pound or 105 gsm. See the manuals supplied with your printer/copier for information on recommended heavyweight paper.

Note: You must select this option when you print to DocuPac page size.

- Select **Transparency Interleave** to have the printer insert blank sheets of paper between printed transparencies. This option works for only A4 LEF (A4L) or Letter LEF (Letter L) paper sizes, depending on the copier's configuration.
- Select **Opaque Film** to print on opaque film. See the manuals supplied with your printer/copier for information on recommended film.

Use Sorter

If the optional sorter is attached to the printer/copier, select "Enable" in the **Use Sorter** menu to put all copies of page 1 into bin 1, page 2 into bin 2, and so on. When this option is disabled, Splash stacks all output pages on top of each other in the bin on the top of the copier.

If you print more than 50 copies of a job to the sorter, you will be prompted to remove the printed sheets to print additional pages. You may experience a "Tray Empty" message for a particular tray, even though the correct paper size is loaded in a different paper tray.

Collate

Select "Enable" in the **Collate** menu to print all pages of copy 1, then all pages of copy 2, and so on. When **Use Sorter** is enabled also, Splash sends each copy of a job to a different bin (copy 1 of all pages go into bin 1, copy 2 into bin 2, and so on). When **Use Sorter** is disabled, Splash sends all copies on top of each other in the bin on the top of the copier.

Note the following when you use the DocuColor Pro sorter for uncollated jobs:

- If there are more than 20 pages, Splash prints copies of the first 20 pages in the 20 bins and then an alert dialog appears at the Splash Server to advise you that the sorter bins are full. If the bins are cleared before the error timeout elapses,, the job continues to print. If the bins are not cleared before the error timeout elapses, the job moves to the error queue.
- If there are more than 50 copies in the job, Splash prints 50 copies of each page into the appropriate bin and then an alert dialog appears at the Splash Server to advise you that the sorter bins are full. If the bins are cleared before the error timeout elapses, the job continues to print. If the bins are not cleared before the error timeout elapses, the job moves to the error queue.

Note the following when you use the DocuColor Pro sorter for collated jobs:

- If there are more than 50 pages, Splash prints the first 50 pages of each copy into the appropriate bin and then an alert dialog appears at the Splash Server to advise the operator that the sorter bins are full. If the bins are cleared before the error timeout elapses, the job continues to print. If the bins are not cleared before the error timeout elapses, the job moves to the error queue.
- If there are more than 20 copies in the job, Splash prints the first 20 copies into the first 20 bins, and then an alert dialog appears at the Splash Server to advise you that the sorter bins are full. If the bins are cleared before the error timeout elapses, the job continues to print. If the bins are not cleared before the error timeout elapses, the job moves to the error queue.

IMPORTANT: Be sure to disable the “collate” option in your applications before you print to Splash. Some applications provide a collate option that appears in the Print dialog box. Many applications activate the collate option as a default setting, so you must be sure to uncheck this option in the Print dialog box before you print. If the collate option in your application is activated (checked) it usually interferes with the Splash sorter feature and results in all pages of your document being placed in a single tray by the printer/copier.

Reverse Page Order

Select “Enable” in the **Reverse Page Order** menu to print jobs starting with the last page of the document. Collated documents that are sent to the top bin of the copier end up face-up with page one on top.

Notes

If your application supports “Reverse Page Order” (sometimes called “reverse order” or “back-to-front”), select it in the application rather than here. If you do not, the page order may not print correctly.

If a sorter is connected to the copier and you want to print multiple collated copies, use the sorter.

Do not select “Reverse Page Order” for a separations print job.

Print jobs with “Reverse Page Order” selected do not use the Splash RIP While Receive feature.

If the optional finisher is connected to the copier, and you select the “Staple” option, you must select “Reverse Page Order” to cause page one to be the first page in the final output.

Staple

Select “Enable” in both the **Staple** and the **Collate** menus to staple the job at the DocuColor Pro.

Notes: Stapled print jobs must have “Collate” selected, even if you will print only one copy of the job. This is done automatically when the job is printed. With the Splash AdobePS driver, the Collate option is also selected here.

In addition, you must select the “Reverse Page Order” print option to cause page one to be the first page in the final output. Reverse Page Order can be set from some applications, or from the Splash Options when you print the job.

Duplex

Select single-sided or double-sided printing options from the **Duplex** menu.

- Choose **No Duplex** to print the job as single-sided sheets.
- Choose **Duplex Short Edge Binding** for printing double-sided sheets that will be bound along the short edge of the document.
- Choose **Duplex Long Edge Binding** for printing double-sided sheets that will be bound along the long edge of the document.

The duplex options control the rotation of the second side of each sheet. They do not affect the page margins.

Note: The Duplex options cannot be selected when the job will be printed to the DocuColor Pro bypass tray.

Face Up

Select “Enable” in the **Face-Up** menu to deliver the completed print job to the paper tray with printed pages facing up.

Note: The Face Up option is ignored when one of the Duplex printing options is selected, or when the “Use Sorter” option is selected. If you select “Face Up” in the **Print Delivery** menu for a duplex job or sorter job, the output will print face down to the printer/copier.

Providing User Information

When you print to Splash with the custom Splash driver, you can enter identification information for your print job, if needed. (This feature is not available when you print to Splash with the Windows Printer driver).

Document Owner and Document Password

These optional text fields allow you to enter your name and password, if needed. The text you enter here appears in the job information dialog box for the spool file at the Splash Server. If you do not enter your name, the job includes the network identification name for your computer. Contact your Splash system administrator to learn what information you need to provide in these fields.

Document Comment

An optional text field for any additional information about the print job. You can enter a maximum of 90 characters in this field. Contact your Splash system administrator to learn what information you need to provide in this field.

Account Number

An optional text field for any account number associated with the print job (up to 32 characters). Contact your Splash system administrator to learn what information you need to provide in this field.

Setting Other Splash Options

This section describes other Splash options you can apply to your print jobs.

Spool Options

Splash provides three options for handling the PostScript spool file that is created when you print to Splash:

- **Print and Delete** automatically deletes the spool file after printing the job.
- **Print and Save** saves the spool file after printing. The job is transferred to the Hold queue with the message “*PostScript spool file saved as requested.*”
- **Send and Hold** sends the spool file directly to the Hold queue after it is received by the Splash Server.

Saving the spool file is useful when small quantities of the same file must be printed occasionally. You can change print options for the saved spool file before printing with the Splash Server application. See the *Splash DC Series v4.0 Set-Up Manual* for information.

Note: Saved spool files remain in the Hold queue until you delete them.

To delete a spool file:

- Select it in the Splash Server Hold queue, then press the Delete key.
- Choose Delete Job from the Jobs menu.
- Drag the spool file to the trash.

Separations

Some applications, most notably page layout applications such as PageMaker and QuarkXPress, can produce “separations” as printed output. These are intended to be imaged on film imagesetters and thus each page is converted to one or more (usually four) output grayscale “pages.” If you print separations to a printer that does not have a special separations feature, you will get one grayscale page per color in the original page.

The Splash Server has the ability to re-composite these individual pages back into a single color page to produce a real proof (equivalent to the proof that would be produced from the films via conventional means). The primary benefit of separations is to show overprinted objects with the proper colors and to make trapping visible.

The **Splash Separations** print option prints a composite page from applications that support separations printing.

- Select **Automatic** to apply the Splash Separations feature to all your separations print jobs automatically. This option supports CMYK plates plus any number of plates in PANTONE, Toyo, HKS, or DIC (if these press colors are supported by your separations application). This option supports separations generated by any application. When this is selected, Splash supports the full range of PANTONE, Toyo, HKS, or DIC colors and tints in your documents.

Note: The Splash Separations feature does not accurately represent traps or overprints composed of a PANTONE, Toyo, HKS, or DIC color.

Note: Due to limitations in PageMaker and QuarkXpress, RGB graphics are converted to CMYK and therefore look similar. RGB images are converted to grayscale and appear as gray in the output.

- Select **None** to disable the Splash Separations feature for a job.

The remaining options, **QuarkXPress 3.0 Style**, **QuarkXPress 4.0 Style**, **PageMaker Style**, **FreeHand Style**, and **Canvas Style** use a separations technique from version 1.0 of the Splash software. These options require that the separations job be made up of exactly four process-color plates. These options do not support additional PANTONE plates. If problems occur in the output when you print separations with “Automatic” selected, convert the colors in your document to four process plates then select the v1.0 separations option that matches your application.

Separations Notes:

The Separations feature supports printing of high-resolution DCS (Desktop Color Separation) files. To print a high-resolution proof of a DCS file, activate the separations feature within your application and in the Splash driver print options dialog box.

The Separations feature is not compatible with Adobe Separator separation jobs. To use separations with Adobe Illustrator (typically done with Adobe Separator), create an EPS and place it into either a QuarkXPress or PageMaker document.

Do not choose the Cover Page option in your application’s print dialog box when you print a separations job to Splash. The cover page is interpreted as a color plate, which causes unexpected results in the separations job. (This problem does not occur when the Print Cover Page option is active for the Splash Server application.)

For best results, do not use the version 1.0 separation options for files with spot colors. Always choose “Automatic”. If your job reports a PostScript error printing a CMYK-only file (no spot colors) with the “Automatic” separation option, try printing with one of the version 1.0 separation options.

If a separations document contains one or more spot colors, any spot colors that are not known by the system will be printed as black (or grayscale for tints). After printing, the job will error with the message “Document printed, but unknown spot color: *name*. Run Preflight report for more details.” (*Name* is the name of the unknown spot color.)

If you use a v2.0-style CMYK color correction profile with a separations file, any black areas (including those created with CMY inks) will print using mainly black (K) toner. If you want the output to be closer to the original CMYK values for the purpose of retaining trapping, select a v1.0-style CMYK color correction profile for the job.

Save as TIFF

Saves a rasterized 72, 200, or 400 dpi TIFF file. The TIFF file is placed in the TIFF Folder within the Splash Folder on the Splash Server computer. To activate this feature, select a resolution from the **Save As TIFF** menu.

Note: When **Save As TIFF** is selected, files are not printed, but are instead saved as files in the TIFF Folder within the Splash Folder on the Splash Server Macintosh. The TIFF Folder is pre-configured for network access by AppleTalk clients. This setup allows client PCs with an AppleTalk network connection to the Splash Server to retrieve TIFF files from the TIFF Folder on the Splash Server, and to delete TIFF files from the folder once they have been copied to the client PC.

Note: If you select a paper tray for a Save As TIFF job, the print job will cause an error at the Splash Server. Always select “Auto Tray Select” for Save As TIFF jobs.

Original Type

This print option sets printer/copier screening and filtering to optimize output based on the image type.

- Select **Photographic** for photographic originals to optimize the output, using a 200-line screen at 400 dpi. This is the best option to choose for color images.
- Select **Text/Graphics/Line Art** to optimize the output of all other data types, including text and line art, using a 400-line screen.

Note: When “Text/Graphics/Line Art” (400-line screen) is used, even if color correction mode is selected, appropriate colors are not always printed. The colors printed sometimes differ from when “Photographic” is selected. For documents that emphasize the color image, select “Photographic.” For documents that emphasize sharp lines (such as a map), select “Text/Graphics/Line Art.”

Print Control Strip

When you select “Enable” in the **Print Control Strip** menu, Splash prints a set of color control patches on the edge of the output. This option can be configured to print either color patches or an EPS file or both. See the *Splash DC Series v4.0 Set-Up Manual* for more information.

Note: The control strip image will overwrite the job image if it occupies the same part of the page in the output.

Print Progressives

When you select “Enable” in the **Print Progressives** menu, Splash prints up to four separate sheets for the print job. This print option is configured at the Splash Server to specify which color passes print on each sheet. This allows you to examine the result of each color pass for a four-color document. See the *Splash DC Series v4.0 Set-Up Manual* for more information.

Note: Do not choose the Cover Page option in your application’s print dialog box when you print a progressives job to the Splash Server. The cover page is interpreted as one of the progressives pages, which causes unexpected results in the job. (The problem does not occur when the Print Cover Page option is active for the Splash Server application.)

Note: If you are using progressives to create press proofs, for best results select one of the Splash v1.0-style one-dimensional CMYK Press Color Correction profiles for the print job (see “CMYK Press Color Correction” on page 26). Ask your Splash system administrator for information about the current CMYK profile settings. See the chapter “Calibrating With ColorCal” in the *Splash Reference Manual* for more information about CMYK Color Correction profiles.

Auto Grayscale Detection

Automatic Grayscale Detection (enabled by default in the print driver) checks each page to see if a page has any color on it before printing. If there is no color detected on the page, the copier prints in single-pass grayscale mode, which speeds up

printing, especially for multi-page documents that contain only some color pages. (This also reduces the cost of printing, as you are charged for fewer color pages.) Disable this feature for maximum printing performance when printing documents that have color on every page. (When active, this feature adds approximately one-half second to the printing of each color page.)

This feature is active when the Color Model is set to “Color” (see page 24). The log file indicates the number of pages within the document that were printed in grayscale mode on the copier as a result.

Note: For fastest printing of an entirely black and white document, set the Color Model to Grayscale for the print job (see page 24).

Creating a PostScript or EPS File

As an alternative to printing your document on the Splash printer/copier, you can save a PostScript language description of your document as a disk file. PostScript language descriptions of documents can be used to:

- Create on-disk document archives
- Print a document from a computer that does not have the application that created the document
- Diagnose printing problems

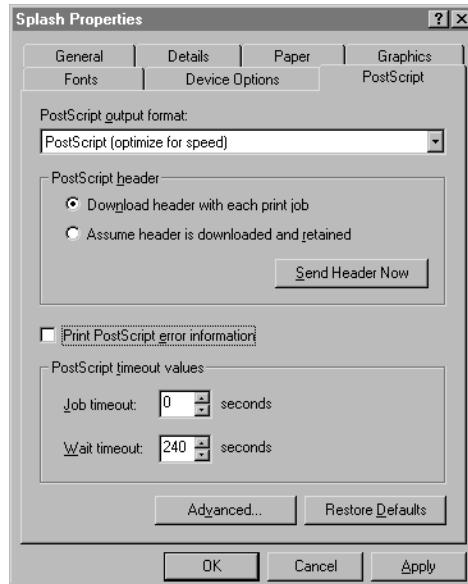
You also may want to create an Encapsulated PostScript (EPS) file; a description of your document that can be imported into other documents.

Some Windows applications provide a Print to File check box in the Print dialog box. If your application does not provide this option, you can use the Windows 95/98 Printers Properties dialog box to choose a PostScript or EPS file as the print destination.

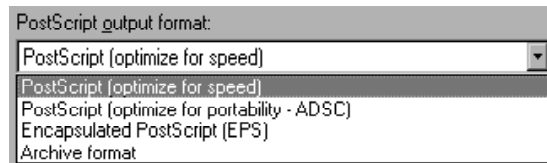
To print a document to a file with the Windows 95/98 Printers Properties dialog box:

1. Click the Windows 95/98 Start button, point to Settings, and then choose Printers.
2. Select the Splash printer in the Printers window.

3. Choose Properties in the File menu (or Properties in the Printer menu if you have opened the Splash printer icon). The Splash Properties dialog box appears.
4. Click the PostScript tab.

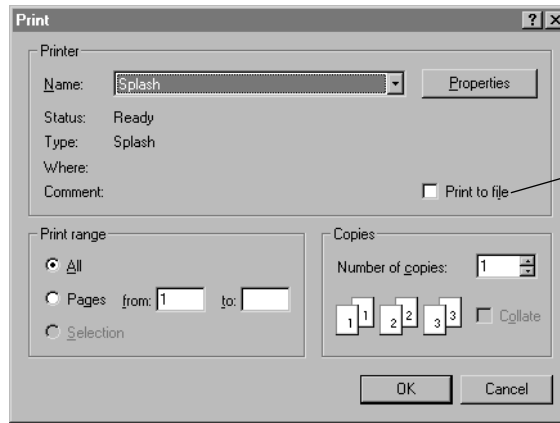


5. Select PostScript (optimize for Portability - ADSC) or Encapsulated PostScript (EPS) from the PostScript output format list.



- Select PostScript (optimize for Portability - ADSC) to create a PostScript file. (You might print to a file, for example, to send it to a service bureau for printing on a commercial press. Since your file is constructed in pure PostScript language, the service bureau does not need your application to print the file.)
- Choose EPS to create an Encapsulated PostScript file. EPS files cannot be printed by themselves, but can be incorporated into other files and printed. (For example, most word processing programs allow you to import an EPS graphic file into your text files.)

6. Click OK.
7. From your application, choose **Print** from the File menu.



8. Select **Print to file** in the Print dialog box.
9. Enter a page range (and number of copies, if needed), then click OK. The Print To File dialog box prompts you for the name of the new PostScript or EPS file.
10. Enter a path and filename, then click OK to create the file.

Refer to the Windows 95/98 On-line Help for more information.

Printing an Acrobat PDF File

You can print PDF-format files created for viewing in Adobe Acrobat by downloading them to the Splash Server with the Web Queue Manager. If you have Acrobat installed on your computer, you can also drop print a PDF file by dragging it to the Splash spool icon.

Deleting a Print Job

To delete a print job, you can either click Cancel in the dialog box that appears as the job is spooling, or delete the job through the Print Manager if it is enabled. (See the documentation provided with Windows 95/98 for instructions.)

Splash Color Correction

Splash has built-in color correction capabilities so you can match your prints to the colors of the image on your display screen and to process inks used on commercial printing presses.

Documents that use both RGB and CMYK graphics used to be a special problem for color proofing. Correcting color for one type of graphic affected the quality of the other. Now, with Splash mixed RGB/CMYK color correction, you get accurate, consistent color for both.

CMYK color correction in v4.0 of the Splash DC Series is optimized for matching mixed press ink colors. Splash CMYK color correction automatically compensates for differences between toner and press ink colors to produce an accurate simulation of the selected press ink profile.

Splash color correction eliminates the color variation that occurs when you print a document as a PostScript file instead of to hard copy, and produces the same RGB color results for both TIFF and EPS files. And since color correction is applied by Splash (instead of by the application) any print job can be color corrected whether you use a pre-press application such as QuarkXPress or a less-complex application such as Microsoft Word.

To ensure the closest possible color correction, use a display calibrator to compensate for the variations of your individual monitor, the lighting conditions in your office, and the whitepoint of your paper.

Two “identical” but uncalibrated monitors may display an image differently enough to exceed the ability of a color correction application to closely match them. In addition, the colors you see on your printed page are affected by the light that is reflecting off the toner, and by the particular shade of white in your paper. If you do not calibrate your display, you may not be taking advantage of some significant benefits that your color correction application offers. Display calibrators can standardize the colors on your display and compensate for different lighting conditions and whitepoints.

If you prefer, you can disable Splash color correction and use a third-party color management system to accomplish your screen-to-print or process ink-to-print color correction. (Color correction using a third-party color management system will increase processing time.)

Splash Color Correction Notes

To achieve the best results with Splash DC Series color correction, note the following:

- When both RGB and CMYK color correction are applied to a print job, any RGB colors in the document are mapped into the gamut of the CMYK color profile. RGB colors within the CMYK profile color gamut will match the RGB monitor settings (gamma and whitepoint), but RGB colors outside the CMYK profile color gamut may develop desaturation and hue shifts.
- If your document contains no CMYK data, or if the RGB colors are primarily out of the CMYK profile color gamut, be sure to turn off Splash CMYK color correction in the printer driver. If CMYK color correction is applied to these files, the RGB colors will be restricted to the CMYK profile color gamut and saturated colors may develop desaturation and hue shifts.

IMPORTANT: MOST BUSINESS APPLICATION DOCUMENTS CONTAIN ONLY RGB DATA. CMYK COLOR CORRECTION SHOULD NORMALLY BE TURNED OFF FOR PRINTING THESE DOCUMENTS.

- For best results with Splash color correction, set the Original Image Type print option to “Photographic” style. The “Text/Graphics/Line Art” option should be used only with grayscale documents or documents that need to show crisp line detail, such as a map.

Chapter 3

Using the Splash Web Queue Manager

If the Splash Server is set up on an Internet or Intranet, and the Splash Web Queue Manager option is installed and enabled at the Splash Server, you can connect to the Splash Server and remotely view and control the Server queues. The Splash Web Queue Manager lets you view and edit print commands for your jobs in the queue, temporarily halt your job from printing, or remove your job from the print queue. In addition, you can send graphics files such as PDF, TIFF, and EPS to the Splash Server for printing.

Before you can use the Splash Web Queue Manager:

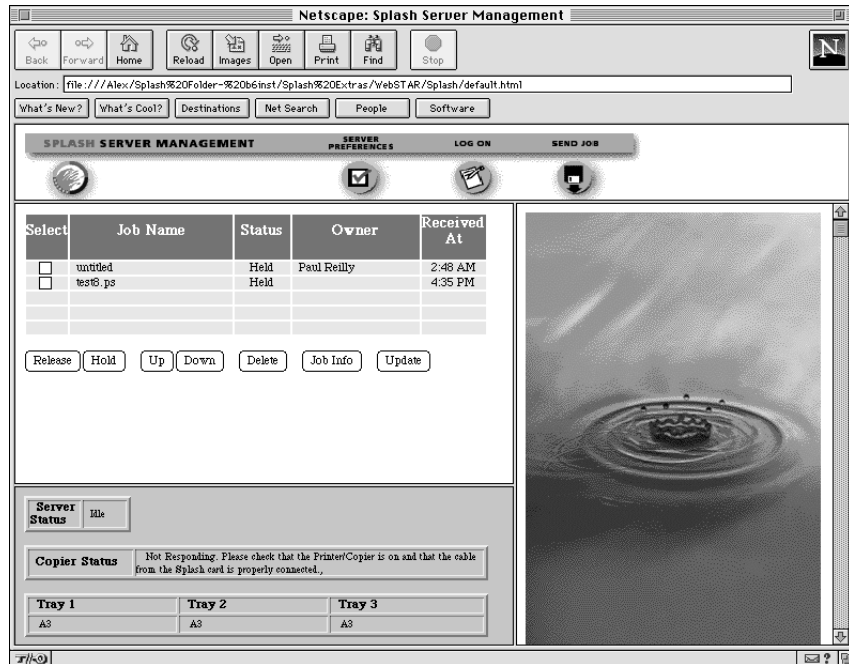
- The Splash Server computer must be set up and running on a TCP/IP network, and the Splash web option must be enabled (see the *Splash Reference* on-line manual for information about how to do this).
- Your Windows 95/98 PC must be running on a TCP/IP network (contact your network administrator for help with this).
- Netscape Navigator (v3.0 or later) or Microsoft Explorer (v3.0 or later) must be installed on your Windows 95/98 PC.

Contact your network administrator for help setting up your computer to use the local Intranet or Internet service. In addition, your administrator needs to provide you with the web address (URL) for the Splash Web Queue Manager.

To use the Splash Web Queue Manager:

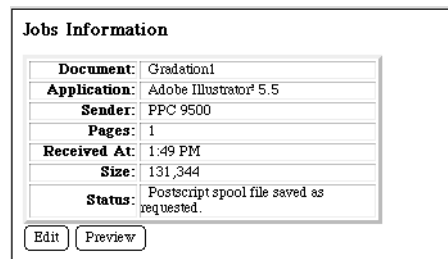
1. Open the web browser application (Netscape Navigator or Microsoft Explorer).
2. In the web browser, enter the web address for the Splash Server. (Contact your Splash administrator for this information.)

3. The Splash Web Queue Manager appears in the browser application window.



A list of print jobs waiting to print at the Splash Server appears on the left in the Web Queue Manager. Information about the Xerox or Fuji Xerox printer/copier appears at the bottom. If an error occurs at the copier, this information displays. (The chapter "Splash Error Messages" in the *Splash Reference* on-line manual provides a list of error messages.)

To view information for a print job, select the checkbox to the left of the job in the list, then click the Job Info button below the job list. Information for the selected print job appears on the right in the Splash Web Queue Manager.



If you select more than one job in the list, Splash provides information for each job you selected.

If the job has already been RIPped, you can click the Preview button in the Job Information screen to view a preview image of the first page of the job if your Splash Server is configured to support this feature.

Click Server Preferences to view the default server preferences set for the Splash Server. If you are logged on as the Administrator, you can also change Preferences from this screen.

Managing Print Jobs in the Queue

If the Splash Server is configured to allow client computers to manage print jobs in the queue, you can use the Splash Web Queue Manager to place jobs on hold, delete them, or move jobs up and down in the queue.

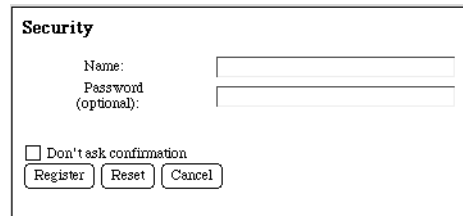
Use the command buttons that appear under the print job list to manage jobs in the Splash queues.

Select	Job Name	Status	Owner	Received At
<input type="checkbox"/>	test	Error	Paul Reilly	3:50 PM
<input type="checkbox"/>	test	Error	Paul Reilly	3:48 PM
<input type="checkbox"/>	SplashDefault.html	Error	Paul Reilly	3:39 PM
<input type="checkbox"/>	test	Error	Paul Reilly	5:21 PM

- To place a hold on a job, select the checkbox to the left of the job, then click the Hold button below the print job list. To take the job off hold, select it, then click the Release button.
- To make a job print sooner, select it, then click the Up button. Each time you do this, the job moves up one place in the queue.
- To force a job to print later than other jobs, select it, then click the Down button. Each time you do this, the job moves down one place in the queue.
- To cancel a print job, select it, then click the Delete button.

The job list updates to show the revised Splash Server queue information.

If the Splash Server is configured to limit remote print queue management, the Splash Web Queue Manager asks you to log on when you attempt to make changes to jobs in the print queue.



The image shows a security login form titled "Security". It contains two text input fields: "Name:" and "Password (optional):". Below the password field is a checkbox labeled "Don't ask confirmation". At the bottom of the form are three buttons: "Register", "Reset", and "Cancel".

Enter your user name and password, then click Register to complete logon. A message appears on the right to confirm your logon. The confirmation message tells you which jobs you have permission to manage with the Web Queue Manager.

Note: If you did not provide a user name and password when you originally sent the job, enter the "Owner" name that appears next to your print jobs in the Web Queue Manager job list.

Editing Print Jobs in the Queue

To view and change the print options for a job listed in the Splash Web Queue Manager, select the checkbox to the left of the job, click the Job Info button, then click the Edit button that appears below the job information. The current print options for the job appear.

Page Settings	
Pages Tray Color Extras Submit	
Number Of Copies:	<input type="text" value="1"/>
Page Range:	<input checked="" type="radio"/> All <input type="radio"/> Odd <input type="radio"/> Even <input type="radio"/> Selected <input type="text"/> Example: 3,5,10-20,25-
Duplex:	<input type="text" value="No Duplex"/>
Paper Handling:	<input type="checkbox"/> Use Sorter <input type="checkbox"/> Collate <input type="checkbox"/> Reverse Page Order <input type="checkbox"/> Staple <input type="checkbox"/> Face Up
Paper Size Handling:	<input type="checkbox"/> Force Paper Size To: <input type="text" value="Letter LEF"/> <input type="checkbox"/> Scale To Paper Size
Tray Settings	
Pages Tray Color Extras Submit	
Tray Selection:	<input type="text" value="Automatic"/>
Bypass Tray Options:	<input type="text" value="Normal Paper"/>

Click “Pages,” “Tray,” “Color,” and “Extras” at the top of the editor to view and select Splash print options for the job. (See Chapter 2 for complete information about the Splash print options.)

When you have finished selecting print options, click “Submit” at the top of the editor, then click “Save Settings” to confirm your changes.

Printing Graphics Files

With the Splash Web Queue Manager you can send graphics files such as PDF, TIFF, EPS, and PostScript files to the printer/copier for printing.

Note: Microsoft Explorer versions 3.0 and earlier do not support sending files to the Splash Server for printing.

To send a file to Splash:

1. Click “Send Job” in the Splash Web Queue Manager window.
2. Select print options for the job. The Web Queue Manager editor appears.

Send Job To Splash Color Server

This page allows you to submit a job to the Splash Color Server.
Your job can be a PostScript file, an EPS file, or a TIFF file. The following options will be applied to PostScript files only.
After selecting the options click "Submit" in the tool bar to select and submit your file.

Page Settings
[Pages Tray Color Extras Submit]

Number Of Copies:

Page Range: All Odd Even Selected

Example: 3,5,10-20,25-

Paper Handling: Use Sorter
 Collate
 Reverse Page Order
 Manual Duplex

Paper Size Handling: Force Paper Size To:

 Scale To Paper Size

Tray Settings
[Pages Tray Color Extras Submit]

Click “Pages,” “Tray,” “Color,” and “Extras” at the top of the editor to select Splash print options for the graphics file. (See Chapter 2 for complete information about the Splash print options.)

3. When you have finished selecting print options, click “Submit” at the top of the editor. Instructions on how to select the file to print appear.

Submit
[Pages Tray Color Extras Submit]

Select the file to Spool to the Splash Server by clicking on the "Browse" Button.
Select "Send" to send your file to the Splash Color Server.

Send this file:

Browse...

Send Reset Settings Cancel

4. Click Browse. A file selection dialog box appears. Select the file to print, then click OK in the dialog box.
5. Click “Send” to print the graphics file to the Splash Server.

The Splash Web Queue Manager transfers the file to the Drop Folder at the Splash Server. The Splash Server processes and prints the job.

Splash Web Queue Manager Notes

Missing Privileges Dialog Box

If you try to release a job that you do not have access privileges for, the Missing Privileges dialog box appears. Click the “Back” button in the Splash Web Queue Manager to close the error dialog and return to the Splash Web Queue Manager.

Pipeline Buffer Server Preference Not Available

The Pipeline Buffer Server Preference cannot be set through the Splash Web Queue Manager.

Some Frames Cover the Job Queue Frame in Internet Explorer

With Microsoft's Internet Explorer, the Job Edit, Job Info, and Log On frames cover the Splash Print Queue frame. To restore the Print Queue frame, click the “Refresh” button.

Job Selection Checkmarks Disappear

If you click to select a job in the Print Queue frame, and do not perform a command (such as Edit Job or Job Info), the checkmark disappears. This occurs because the server updates the Print Queue every so often. If no command is sent to the server, the server cannot tell that the job is selected at the client, so the checkmark is erased when the frame is refreshed.

Chapter 4

Application Notes

The following notes apply to the Splash Windows 95/98 driver software. Please read them before you use this software to print to Splash.

General Driver Notes

Print Command Options

When you print to Splash using the Adobe PS driver and custom Splash PPD, some print commands include a list of options. To select an option that appears in a list, click the arrow buttons on the right side of the list until the option you want appears, then click the option to select it. The option that appears blue in the list is the selected option. Print commands that work in this manner are CMYK Color Correction Press Profile, RGB Rendering Style, RGB Gamma, RGB Whitepoint, and Separations.

Accidentally Printing EPS Files

If a printer driver is configured to print EPS output to a printer rather than a file, a warning message states that EPS should not be output to a port; the job prints correctly within the application, then the printer stays in a waiting mode until either another job is sent, or a timeout error occurs. To avoid this error, be sure that EPS format is printed to a file, rather than to a printer. (See Chapter 2 for instructions.)

Deselect PostScript Error Option Before You Print

Be sure to uncheck the “Print PostScript error information” checkbox in the Windows 95/98 PostScript Printer Properties window before printing to Splash. (*Note:* the default setting for this option is on. Be sure to uncheck this option in the Printer Properties window.)

Canceling a Print Job

If you cancel a print job, the Splash printer generates a blank page with some applications.

Duplicate Cover Pages

If “Print Cover Page” is selected in the Splash Server application, and you select the Cover Page option in your application, Splash prints two cover pages for the job.

Interaction With the Printers Control Panel

Some changes to settings made in the Windows Printers Control Panel, such as “Set as Default Printer,” “Remove,” and “Connect,” take effect only after the Printers Control Panel is closed.

Jobs with Text or Fill Patterns Over TIFF May Not Print Correctly

For jobs printed from a Windows client, text and fill patterns that overlay a TIFF image may not print. Avoid overlaying a TIFF image with text or fill patterns in your Windows documents.

Some Images Print With Limited Color

Images based on RLE-4 and RLE-8 compression print with limited halftoning effects. Typically, shades of gray or color print as either black or white. There is no known workaround.

Printing Gradient Fills

Documents that contain radial fills require extra time for Splash to process and print.

Network Notes

Novell NetWare Notes

When you set up a client to print to Splash with Novell NetWare, deselect the Banner Page option with Novell’s User’s Tools on the client computer. If the Banner Page option is selected, Splash will not receive some Splash Windows driver feature selections (including tray specifications and color correction settings). Novell’s Banner Page feature also interferes with proper printing of A3 Full Bleed on Over-size paper size.

When you print to Splash with Novell NetWare, your print job is spooled by both the Splash Server and by the Novell bridge. This results in slower printing. If you also enable the Windows Print Manager, the print job is triple spooled—once on the Windows client, once on the Novell server, and once on Splash.

PC MACLAN Connect Notes

If you connect to the Splash Server from Windows 95/98 using Miramar System's PC MACLAN Connect software, for most applications you must set the printer data format to "Pure binary data" in the Windows 95/98 Printer Properties PostScript tab. For Microsoft Office applications (Word, Excel, PowerPoint), you must set the printer data format to "ASCII data", disable PostScript error reporting, and disable sending "CTRL+D" after the print job to print files correctly.

To set up printing for all applications except Microsoft Office applications, connect to the Splash Server and use the custom Splash Adobe Printer Driver to set up the Splash Server and install the Splash client software. After Splash Server setup is complete:

1. Open the Start menu, point to Settings then choose Printers from the submenu that appears. The Printer control panel appears.
2. Double-click the Splash Server printer icon in the Printer control panel. The Splash print queue window opens.
3. Choose Properties from the Printer menu in the Splash print queue window. The Printer Properties dialog box appears.
4. Click the PostScript tab. The PostScript options appear.
5. Click the Advanced button. The Advanced PostScript options appear.
6. Under Data Format, select "Pure binary data" then click OK.
7. Click OK to close the Printer Properties dialog box.

Setup for printing from most applications to the Splash Server over PC MACLAN Connect is complete.

To set up printing for Microsoft Office applications:

1. Double-click the Splash Server printer icon in the Printer control panel. The Splash print queue window opens.

2. Choose Properties from the Printer menu in the Splash print queue window. The Printer Properties dialog box appears.
3. Click the PostScript tab. The PostScript options appear.
4. Click to deselect the “Print PostScript error information” checkbox.
5. Click the Advanced button.
6. Under Data Format, select “ASCII data”.
7. Click to deselect “Send CTRL+D before job” then click OK.
8. Click OK to close the Printer Properties dialog box.

Setup for printing from Microsoft Office applications to the Splash Server over PC MACLAN Connect is complete.

Application Notes

This section describes how to optimize Splash performance with specific applications.

Supported Windows 95/98 Applications

The applications listed below have been tested and are known to work with Windows 95/98.

- Adobe PageMaker 6.5
- Adobe Photoshop 4.0
- Adobe Illustrator 4.1
- Microsoft Office 97
- MacroMedia FreeHand 7.0
- QuarkXPress 4.0
- CorelDRAW

Adobe Illustrator Notes

In Adobe Illustrator, if you select an A3 portrait page size and a reduce/enlarge value of 200% or greater in page setup, you may get multiple copies when only one is selected.

The top and bottom margins are reversed when you print from Adobe Illustrator version 3.2.

In some cases, gradients in Adobe Illustrator 5.0 do not print properly with Splash. If you notice that gradients print with “banding,” move the file “smt_SpecialStartup001.ps” from the PostScript Items folder within the Splash Extras folder, to the Splash Folder. This will correct the problem.

Adobe PageMaker for Windows Notes

Adobe PageMaker 5.0 for Windows jobs with embedded TIFFs are not processed properly by Color Central and do not print when “Substitute High Resolution Images” is selected. To resolve this problem, do not select “Substitute High Resolution Images” for these jobs.

Under certain circumstances, Adobe PageMaker print jobs that are sent to a specific paper tray are moved to the Error queue and do not print. This occurs when no paper trays at the copier contain Letter or Letter LEF paper. To correct the problem, make sure at least one paper tray at the copier is loaded with Letter or Letter LEF paper.

If you are using PageMaker 6.0, RGB colors may not be created and printed as expected. Upgrade to PageMaker 6.5 to ensure RGB color matching between the monitor and print output.

If an Adobe PageMaker 5 document contains high-resolution TIFF images, the TIFFs do not print properly to a Color Central Lite queue that is configured for APR (Automatic Picture Replacement). There are three ways to work around this problem:

- Use a low-res sample of the TIFF instead of the high-res TIFF in the document.
- Use an EPS image instead of a TIFF in the document.
- Print the PageMaker 5 document to a Color Central Lite queue that is not configured for APR.

Adobe Photoshop v3.0 for Windows Notes

When you print multiple copies of a document in Adobe Photoshop v3.0 for Windows the Splash Server RIPs each copy as a separate document. This slows printing of the job (because the job is RIPped multiple times instead of once) and causes inaccurate information to appear in the print status line in the Server window. Until this problem is resolved, you can avoid slow printing of multiple copies of a document in the following way:

1. In the Splash print options, choose “Print and Save” from the Spool Options list. This saves the spooled print job on the Splash Server after you print the Adobe Photoshop file. (See the appropriate *Printing to Splash...* on-line manual for instructions on how to select Splash print options.)
2. Print the file from Adobe Photoshop.
3. After your file has printed, go to the Splash Server computer and double-click the saved spool file (created when you printed the job from Adobe Photoshop). The Splash lets you set the number of copies to print, as well as other Splash printing options.
4. When you finish editing the spool file, click OK then drag it to the Waiting queue to print.

Save as TIFF

When you use the Splash Save as TIFF option with a long-edge feed paper orientation selected (LetterL, A4L, B5L, and so on), the page appears rotated when the TIFF is opened in Adobe Photoshop. This does not occur when short-edge feed paper orientations are used with Save as TIFF.

CorelDraw Notes

If you attempt to save a document as a TIFF with CorelDraw 5.0, the job errors at the Server with the message, “Can’t save as TIFF.”

To use the Splash Separations feature, you must have CorelDraw version 7.0 or later installed. Earlier versions of CorelDraw will print a black page for each separation plate.

Deneba Canvas Notes

There are several limitations associated with printing a separations document to Splash from the Canvas application:

- When you print a separations job to Splash from Canvas, select the “Canvas Style” separations option. The “Automatic” option does not work with Canvas documents.
- Certain Canvas separations documents that contain several complex PostScript operations, such as a combination of trapping, overprinting, and DCS recombination, result in an error at the Splash Server. These jobs return the error message “Error: undefined; OffendingCommand:” and the separations job does not print. This problem is caused by faulty PostScript code generation by Canvas.
- With Canvas, a multiple-page separations document printed with the Splash driver prints the first page only.

Canvas documents that contain many complex gradients do not print all gradients correctly when the Splash “Screened” print option is enabled for the job. Some gradients print with a patterned fill and the gradients are heavily stepped. If the document contains multiple pages the problem is more pronounced on later pages.

Macromedia FreeHand for Windows 95/98 Notes

Before you print a document to Splash from Macromedia FreeHand, you must select the Splash PPD in the FreeHand Print dialog box. A Browse window appears in the FreeHand Print dialog box. Use the Browse window to select the Splash PPD from the Windows\System directory. If you experience problems printing from FreeHand, copy the Splash PPD to the PPDs directory within the FreeHand application directory.

With Macromedia FreeHand 3.11, if you print an A3 size image with the Fit To Page option, Splash may print a blank sheet of paper.

The name “Tool Box” appears instead of the correct print job name in the print queue for FreeHand 3.1. This problem is caused by a design flaw in FreeHand.

For best results printing your documents to Splash, upgrade to FreeHand version 7. Earlier versions of this application may produce problems when you print to Splash.

FreeHand 7.x Notes

If you select 2-Up or 4-Up printing for a FreeHand document the job prints the page borders only. The page contents do not print on the 2-up or 4-up job output.

If the printer/copier runs out of paper while printing an Macromedia FreeHand document, Splash prompts you to add more paper to the tray, or cancel the print job. If you click the Cancel button to cancel the print job, FreeHand displays a second add paper message and then prints an “Error” page once you add paper to the tray. If your print job specified multiple copies, FreeHand transfers the page count to the “Error” page. This results in multiple prints of the error message page.

When you print to Splash from FreeHand 7 on a PC running Windows 95/98, do not select the “Use PPD” checkbox in the print dialog box. When this checkbox is selected, the Splash print options are not sent with your print jobs.

If you print a FreeHand document from Windows 95/98, and specify a paper size that is not available at the copier, the job does not print and does not report an error. To successfully print the FreeHand file, select the “Print and Save” spool file option when you print a job. A spool file for the job appears in the Hold queue. Double-click the spool file and select the “Force paper size to” option to print the job to a paper size that is available at the copier. After the job prints successfully, delete it from the Print and Save queue.

FreeHand documents saved as PostScript files do not print correctly when they are placed in the Splash Drop Folder or dragged onto the Server queues. The file prints as a blank page or does not print at all.

The Splash Reverse Order print option does not work with FreeHand 7 on a PC running Windows 95/98.

As described in the MacroMedia TechNote #3617, TrueType fonts are not correctly downloaded from Windows 95/98 when using FreeHand 5.0. The characters will look correct on the screen, but the wrong characters are printed. The workaround for this problem is to add the following line to the “Win.ini” file in the [compatibility32] section:

```
FH5=0x0008
```

MacroMedia FreeHand for Windows 95/98 does not appear to support the Splash printing features. Options can be selected in the Device Options property dialog box, but they have no effect when printing from FreeHand. The only known workaround is to edit the spool job once it is received at the Splash Server and add the desired Splash print features to the job.

Windows Jobs with Text or Fill Patterns Over TIFF May Not Print Correctly

For jobs printed from a Windows client, text and fill patterns that overlay a TIFF image may not print. Avoid overlaying a TIFF image with text or fill patterns in your Windows documents.

QuarkXPress Notes

Force Tray Does Not Work

With QuarkXPress, if you print with the Force Tray option, but the printer/copier tray does not contain the correct paper size, the print job errors. Splash does not report that the tray contains an incorrect paper size. To avoid this problem, use the Auto Tray Select option instead of Force Tray.

Splash Reverse Order Printing Option Not Supported

The Splash Reverse Page Order print option is supported for QuarkXPress print jobs that fit entirely in frame buffer memory. The Reverse Page Order option is also supported when the Use Collated Mini Sets option is enabled in the Splash Server Preferences.

Note: If the print job has an odd number of pages and the Splash “Duplex” print option is selected, select both the Splash “Reverse Page Order” option and the QuarkXPress “Back to Front” option to print the job correctly.

Landscape LEF Jobs Rotated

When you print a job with Landscape orientation and an LEF paper size selected, the output is rotated 180 degrees. To avoid this, choose Options in the Page Setup dialog box then select “Flip Horizontal” and “Flip Vertical” under Visual Effects before you print the job.

Microsoft Excel Notes

Due to a problem caused by Microsoft Excel PostScript generation, an Excel print job may return to the Splash print queue with an error, although the actual job successfully prints. If this happens, delete the errored job from the Splash queue.

Index

A

Add Printer Wizard 9

Adobe Illustrator
 notes 52
 separations 33

Adobe PageMaker
 auto tray select 20
 notes 53
 separations 33

Adobe Photoshop, notes 54

Adobe Separator 33

AppleTalk connection software 7

Applications supported for Splash 52

Auto Tray Select 20

Automatic Grayscale Detection 35

C

Canceling a print job 44

Canvas
 notes 55
 separations 33

Choosing color correction 25

CMYK Press color correction 26

CMYK/RGB mixed color files 39

Color correction, RGB 25

Color options 24

Color printing 24

Composite Spot Colors 26

Contone printing option 24

CorelDraw , notes 54

Cover page
 duplicate 50
 with separations printing 33

Custom color correction 26

D

DCS files, printing 33

Default printer 12

Deleting a print job 38, 44

Device Options tab 22

DIC spot colors 26

DocuPac 19, 27

Duplex printing 30

E

Enable Separations 33

Encapsulated PostScript (EPS) files
 creating 36
 printing 49

Enhanced color correction 26

Euroscale color correction 26

F

FreeHand
 notes 55
 separations 33

G

Gamma options 25
Graphic OHP 25
Graphics rendering style 25
Grayscale printing 24, 35

H

Heavy weight paper 27
Hold status for a print job 44

I

IPX printing 7

L

Landscape paper orientation 20
Layout options 20
LEF vs. SEF paper sizes 20

M

MACLAN Connect 7
Memory requirement (RAM) 5

Microsoft Excel notes 58
More Blue whitepoint option 25
More Yellow whitepoint option 25

N

Networking hardware and software 5
Novell NetWare 7, 10, 23, 50

O

Orientation 20
Original Image Type 34

P

PANTONE spot colors 26
Paper orientation 20
Paper size options 19
Paper source option 20
Paper tab 19
Photographic OHP 25
Photographic originals 34
Photographic rendering style 25
Portrait paper orientation 20
PostScript, creating a print file 36
Print Control Strip 35
Print cover page 50
Print dialog box 23

Print job priority 44
Print options 17, 18
Print Progressives 35
Printer name 12
Printers setup 9

Q

QuarkXPress
 notes 57
 separations 33

R

RAM requirement 5
RGB color correction 24
RGB/CMYK mixed color files 39
RLE-4 and RLE-8 compression note 50
Rotated landscape paper orientation 20

S

Save as TIFF 34
Save Spool File 32
Screened printing option 24
Separations
 do not use with cover page 33
 print option 33
Splash client driver, older versions 15
Splash color options 24

Splash IPX Direct 7, 23
Spot colors 26
Supported applications 52
SWOP color correction 26
System requirements 5

T

Text Enhancement 27
Text/Graphics/Line Art originals 34
TIFF, save print job as 34
Toyo spot colors 26
Transparency 27
Transparency interleave 28

U

Unprintable Area 21

W

Whitepoint options 25
Windows 95 Driver floppy disk 8, 9
Windows NT 7