

Version 1.0
09/10



Xerox® ColorQube™ 9301/9302/9303 Internet Services



©2010 Xerox Corporation. All Rights Reserved. Unpublished rights reserved under the copyright laws of the United States. Contents of this publication may not be reproduced in any form without permission of Xerox Corporation.

XEROX®, XEROX and Design® and ColorQube® are trademarks of Xerox Corporation in the United States and/or other countries.

Changes are periodically made to this document. Changes, technical inaccuracies, and typographic errors will be corrected in subsequent editions.

Document version 1.0: September 2010

Contents

| | |
|-----------------------------------|-----|
| Introduction | 220 |
| Accessing Internet Services | 221 |
| Status | 222 |
| Welcome | 222 |
| Description & Alerts | 222 |
| Billing Information | 222 |
| Usage Counters | 223 |
| Configuration | 223 |
| Consumables | 223 |
| Trays | 224 |
| Information Pages | 224 |
| SMart eSolutions | 224 |
| Jobs | 227 |
| Active Jobs | 227 |
| Saved Jobs | 227 |
| Print | 228 |
| Scan | 229 |
| Address Book | 230 |
| Properties | 231 |
| Support | 232 |
| Help | 233 |

Introduction

Internet Services uses the embedded HTTP Server on the device. This allows you to communicate with the ColorQube™ 9301/9302/9303 through a web browser and gives you access to the Internet or Intranet.

Entering the IP Address of the device as the URL (Universal Resource Locator) in the browser provides direct access to the device.

Internet Services enables users to perform many functions, including:

- Checking machine status, billing information and consumable status.
- Submitting print jobs over the internet or intranet.
- Set up the Public Address Book by importing an existing address book, or by adding entries individually.
- Creating, modifying and deleting Workflow Scanning templates.
- Customize the device settings such as Energy Saver, Paper Trays and Timeout Settings.

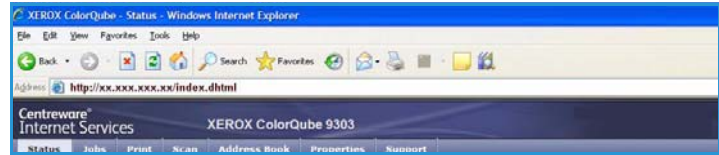
The Internet Services Help function describes all the features and functions available.

Accessing Internet Services

Prior to connecting to Internet Services the device must be physically connected to the network with TCP/IP and HTTP enabled. An operational workstation with *TCP/IP Internet* or *Intranet* accessibility is also required. To access Internet Services:

1. Open the web browser from your Workstation.

2. In the URL field, enter `http://` followed by the IP Address of the device. For example: If the IP Address is 192.168.100.100, enter the following into the URL field:
`http://192.168.100.100.`



3. Press **Enter** to view the Home page.

The Internet Services options for your device are displayed.

Note To find out the IP address of your device, print a configuration report. Refer to the [Machine and Job Status](#) guide for instructions.

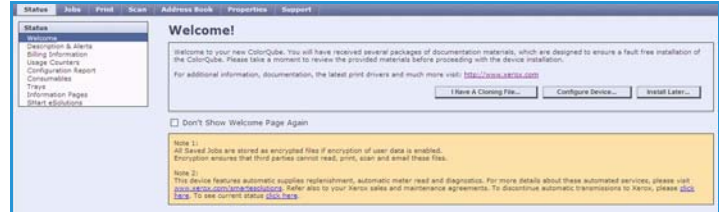
Status

The *Status* option provides information about the device.

Welcome

The Welcome page provides information about setting up and installing your device.

Once you have reviewed this page it can be switched off using the **Don't Show Welcome Page again** option.



Description & Alerts

A description of any problems or *Alerts* on the device.



Billing Information

Provides the device serial number, the number of black impressions and the number of color impressions made.



Usage Counters

Provides more detailed information on device usage, such as number of copied sheets, number of printed sheets, number of faxes and number of large sheets.

| Counter | Count |
|--|-------|
| Total Impressions | 4258 |
| Black Impressions | 1018 |
| Black Copied Impressions | 678 |
| Black Printed Impressions | 330 |
| Color Impressions | 3240 |
| Color Copied Impressions | 1363 |
| Color Printed Impressions | 2883 |
| Embedded Fax Impressions | 10 |
| Internet Fax Impressions | 0 |
| Server Fax Impressions | 0 |
| Large Impressions | 36 |
| Black Large Impressions | 0 |
| Color Large Impressions | 36 |
| Stored Image Printed Impressions | 0 |
| Black Stored Image Printed Impressions | 0 |
| Color Stored Image Printed Impressions | 0 |
| Black Copied Sheets | 695 |
| Color Copied Sheets | 1354 |
| Black Printed Sheets | 286 |
| Color Printed Sheets | 3286 |
| Embedded Fax Sheets | 10 |
| Black Copied 2 Sided Sheets | 8 |
| Color Copied 2 Sided Sheets | 239 |
| Black Printed 2 Sided Sheets | 2 |
| Color Printed 2 Sided Sheets | 669 |
| Embedded Fax 2 Sided Sheets | 0 |
| Black Copied Large Sheets | 0 |
| Color Copied Large Sheets | 0 |
| Black Printed Large Sheets | 0 |
| Color Printed Large Sheets | 36 |
| Embedded Fax Large Sheets | 0 |

Configuration

This section displays the configuration of the device and the option to print a configuration report.

| Configuration Option | Link |
|-----------------------------------|---|
| ADP Is | Scan to Home |
| Accounting | Scan to Mailbox |
| AppleTalk | Security |
| Audit Log | Server Fax |
| Authentication Configuration | Services |
| Authentication Method | SLP |
| Common User Data | SMTP |
| Connectivity Physical Connections | SNMP |
| Connectivity Protocols | Software Versions |
| Embedded Fax | SSDP |
| Encryption | TCP/IP v4 |
| Extensible Service Setup | TCP/IP v6 |
| FIT | Web Services |
| General Setup | Web Services on Device |
| HTTP | WINS |
| Image Overlay | Workflow Scanning |
| Internet Fax | XPS (XML Paper Specification) |
| IP Filtering | Save Jobs for Reprint |
| IP Sec | Scan to E-mail |

[Print Configuration Page](#)

Consumables

This option provides information on the life of the device consumables, such as the Ink Sticks and Cleaning Unit.

| Component | Status | Life Remaining | Estimated Pages / Days |
|------------------------------------|--------|----------------------|------------------------|
| ColorQube Ink | | | |
| Magenta Ink | OK | 0 1 2 3 4 5 6 sticks | 11138 56 |
| Cyan Ink | OK | 0 1 2 3 4 5 6 sticks | 32480 164 |
| Yellow Ink | OK | 0 1 2 3 4 5 6 sticks | 32044 167 |
| Black Ink | OK | 0 1 2 3 4 5 6 sticks | 40068 203 |
| Cleaning Unit | | | |
| Cleaning Unit | OK | 0 25 50 75 100% | |
| Document Feeder Feed Roller | | | |
| Document Feeder Feed Roller | OK | 0 25 50 75 100% | 147000 703 |

[Refresh](#)

Trays

This area displays status information about all the paper trays. It also provides information about the tray media and settings.

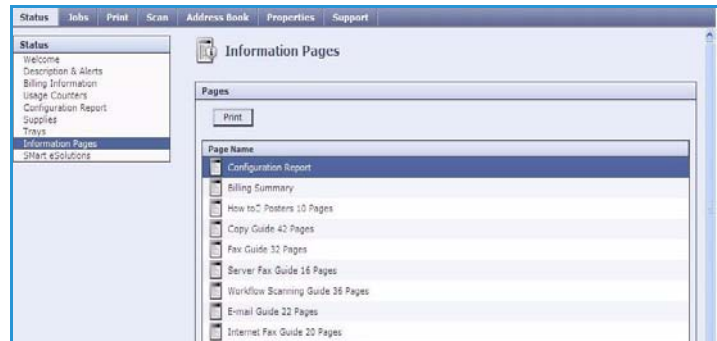


Information Pages

Using this option, individual guides can be printed which provide information about the ColorQube™ 9301/9302/9303 services and features.

It also provides sampler pages which are used for checking the quality and color settings.

Select the guide or sampler page required and select **Print**.

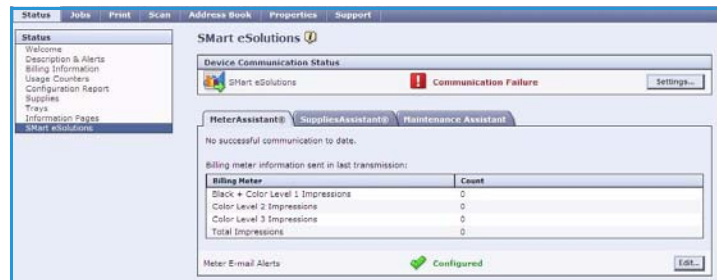


Smart eSolutions

Smart eSolutions provides the ability to automatically send data to Xerox to be used for billing, supplies tracking and replenishment and for troubleshooting problems.

Smart eSolutions provides the following features:

- **Meter Assistant™** - automatically submits meter readings to Xerox from networked devices. This ends the need to collect and report meter read information manually.
- **Supplies Assistant™** - manages ink and component supplies for your device and monitors actual usage.
- **Maintenance Assistant** - monitors the device and reports diagnostic information to Xerox through your network. You can also use the Maintenance Assistant to conduct an online troubleshooting session with Xerox and to download information about your device performance.



Meter Assistant™

Meter Assistant™ provides detailed information, including dates, times, and counts of impressions sent in the last billing meter transmission. The meter data is recorded in the Xerox service management system. It is used for the invoicing of metered service agreements, and also for evaluating consumable usage against printer performance.

Email notifications can be setup to alert you of the following changes:

- **Billing meter reads reported** - an alert is generated when billing meter readings have taken place. You can set up your device so that it will automatically offer meter readings when requested by the Xerox Communication Server.
- **Smart eSolutions enrollment is cancelled** - an alert is generated when the state is changed from "Enrolled" to "Not Enrolled."
- **Smart eSolutions communication error has occurred** - an alert is generated when there is a communication error.

For information about configuring the Meter Assistant™ settings, refer to the [System Administrator Guide](#).

Supplies Assistant™

The Supplies Assistant™ enables you to proactively manage ink and component supplies for your device, ensuring that you never run out. It monitors supplies usage and automatically orders supplies based on actual usage.

The most recent supplies usage information sent to Xerox can also be viewed. Use the **Refresh** button to ensure the latest information is displayed.



For information about configuring the Supplies Assistant™ settings, refer to the [System Administrator Guide](#).

Maintenance Assistant

Maintenance Assistant monitors your device and notifies Xerox support services of potential issues. It automates the notification, troubleshooting and repair process, minimizing device downtime.

- If a problem occurs, you can use the **Send Diagnostics Information to Xerox...** option to immediately send information to Xerox which will assist with troubleshooting activities.
- Use the **Start an Online Troubleshooting session at www.xerox.com...** button to access the Xerox website for immediate advice on resolving device problems.



Status

- Use the **Download File to Your Computer...** button to save or view a CSV file containing detailed information about device usage and any problems which have occurred on your device.
- Use the **Refresh** button to view the latest status information.

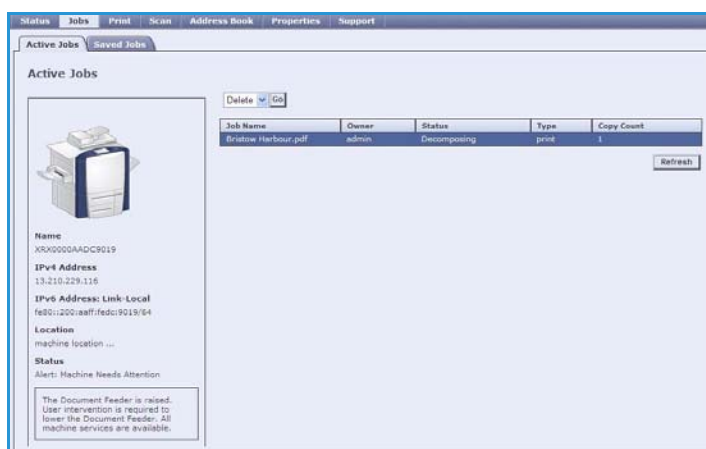
For information about configuring the Maintenance Assistant settings, refer to the [System Administrator Guide](#).

Jobs

The *Jobs* option provides information about the all the incomplete jobs in the *Job List* on the device and the Saved Jobs.

Active Jobs

Use this option to check the status of your job. The *Incomplete Jobs* list displays a list of the current jobs and the status of each job.



Saved Jobs

Jobs which have been saved to the device memory can be accessed using the *Saved Jobs* option. A *Saved Job* can be selected and printed, deleted, copied or moved.

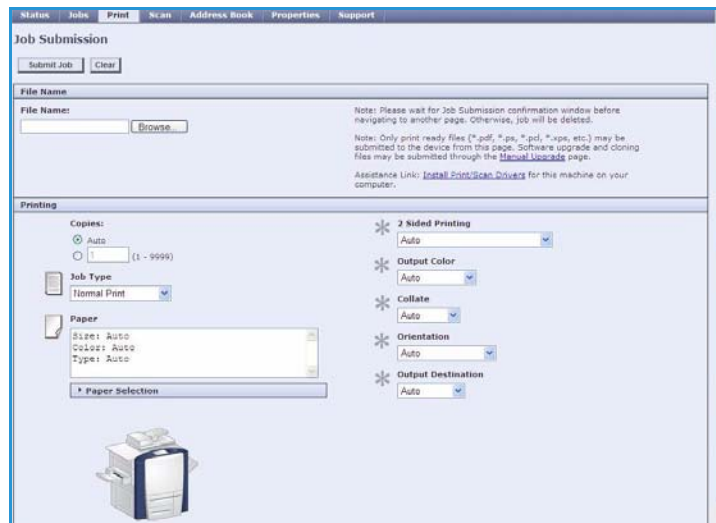
For information about creating and managing Saved Jobs, refer to [Saving Jobs for use with Print From...](#) on page 203.

Print

The *Print* option enables you to send a print ready job such as a PDF or PostScript file to the printer over the internet. You can send the job from your desktop or from a remote location.

To use the *Job Submission* option:

- Enter the file name of the job requiring printing, or use the **Browse** option to locate the file.
- Program the printing options required.
- Select **Submit Job** to send the job to the printer over the internet.

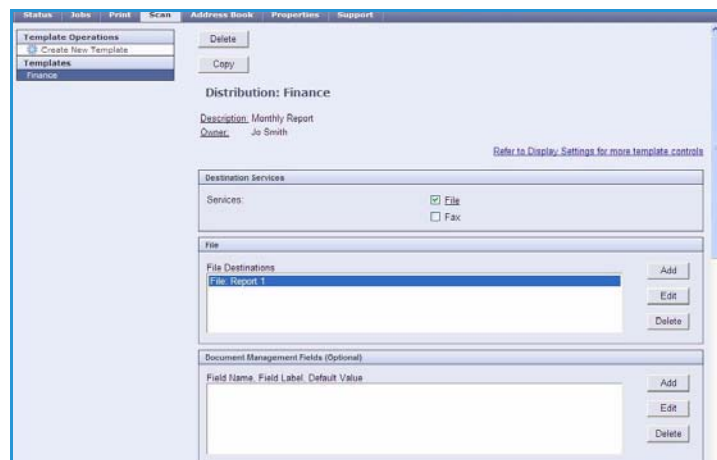


Scan

The *Scan* option displays a list of all the *Workflow Scanning* templates that have been created using Internet Services.

Use the Scan options to create, modify, copy or delete Workflow Scanning templates.

Refer to the [Workflow Scanning](#) guide for more information about the Scan options.



Address Book

The device supports two types of address book:

- Internal - A global address book provided by LDAP (Lightweight Directory Access Protocol) services.
- Public - An address book created from a list of names and addresses saved in a CSV file (Comma Separated Values) format.

The *Address Book* tab is used to setup and manage a Public Address Book. The file must be in a CSV (Comma Separated Values) format for the device to be able to read the file contents. The device can have access to both an LDAP server and a Public Address Book. If both are configured the user will be presented with the choice to use either address book to select e-mail recipients.



Refer to the [System Administrator Guide](#) for further information about Address Books.

Properties

The *Properties* option contains all the settings, setups and default values for installing and setting up the device. These are protected by a user name and password and should only be changed by your System Administrator.

Refer to the [System Administrator Guide](#) for information about configuring your device.

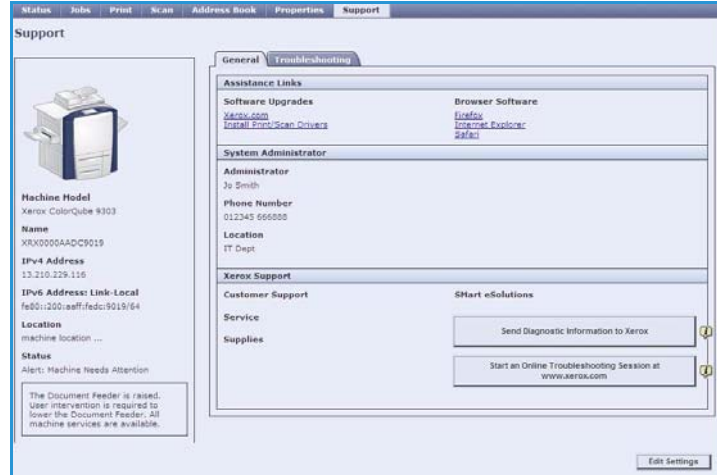


Support

The *Support* option contains the **General** and **Troubleshooting** tabs.

The **General** tab displays the name and telephone number of your System Administrator and the telephone numbers you should use for *Customer Support* and *Supplies*.

Use the **Troubleshooting** tab to access reports and information to help identify and resolve device problems.



Help

Select the **Help** button to display the *Help* screens.

The structure of the *Help* screens corresponds to the structure of the Internet Services options.

Use the menu on the left of the *Help* page to access descriptions and instructions about all the features and functions of Internet Services.

