

Xerox FreeFlow[®]
Print Server v. 8.0. SP
Customer Welcome Package for
Xerox Color 550/560



©2010 Xerox Corporation. All rights reserved. Xerox® and the sphere of connectivity design, FreeFlow® and DocuColor® are trademarks of or licensed to Xerox Corporation in the United States and/or other countries.

Printed in the United States of America.

Changes are periodically made to this document. Changes, technical inaccuracies, and typographic errors will be corrected in subsequent editions.

Contents

- 1 Welcome and Congratulations 1-2
 - Simplicity—to help you get the work done..... 1-2
 - ConfidentColor Technology—delivers great results everytime..... 1-2
 - Variable Printing—from simple to complex..... 1-2
 - Benchmark security—because it truly matters. 1-3

- 2 “Getting Started” Multimedia Program for FreeFlow Print Server 2-3
 - Summary 2-3
 - This one hour program will kick start your learning. 2-3
 - Client and Remote Support..... 2-4
 - Variable Data Printing 2-5
 - Workflow 2-5

- 3 Considerations and Notes 3-5
 - Color Management Notes 3-5
 - Scanning & Imaging Notes 3-6
 - Networking 3-6

Welcome and Congratulations



This is the latest software and documentation package for your Xerox FreeFlow Print Server. Whether you're starting out in digital color or already delivering color-critical jobs, this sleek, simple and smart new software will help you get the job done.

FreeFlow Print Server brings the most sophisticated blend of office and production workflows come together with the FreeFlow Print Server version 8 for the Xerox® Color 550/560 Production Printer. The FreeFlow Print Server delivers production level capabilities such as robust queue management and Adobe® PDF Print Engine support while honoring all of the office capabilities the machine has to offer

Simplicity—to help you get the work done.

Whether you are printing with PostScript or through the new Adobe PDF Print Engine, the FreeFlow Print Server makes it easy to get great results, every time. The Xerox® Print Driver is very visual and makes it easy for people to submit jobs for printing. For the operator or walk-up user, the User Interface (UI) is easy to use and can be customized to support the activities that you do the most. And for those last minute changes, you can make them effortlessly at the UI on a page, job or queue level.

ConfidentColor Technology—delivers great results everytime.

Whether you are looking for great results with built-in or customizable color controls, the FreeFlow Print Server has it. Color calibration is not only reliable but also easy, quick and very accurate. And with Xerox® Consistent Color Mode—an easy, one-button selection to “normalize” color across multiple print engines combined with Xerox’s advanced profiling technology and the highly refined calibration techniques—the FreeFlow Print Server provides you with a benchmark in simple, built-in color management for consistency across devices and time.

Variable Printing—from simple to complex.

From simple to complex, the FreeFlow Print Server can handle your variable data printing needs, thanks to variable caching, background forms and other performance features. All data is kept intact using a native format without file conversion—so you can feel confident that your job will

print quickly and correctly. It's the logical printing solution whether you are just beginning or already printing variable jobs.

Benchmark security—because it truly matters.

Benefit from multiple security levels, all based on super-secure UNIX®, which is not susceptible to attack from email viruses or worms. Encrypted job-submission modes provide for public and private key encryption. Security profiles offer custom setups, a print mode that limits duplicate page printing, and more. Rest assured, you are working with a very secure system.

“Getting Started” Multimedia Program for FreeFlow Print Server

Summary

Xerox is now offering a new resource designed to help you learn the basic operation of the FreeFlow Print Server to get you printing as quickly as possible with your new Xerox printing system. If you are a new user or have not used the FreeFlow Print Server much, the Getting Started resource is the perfect place for you to start.

This one hour program will kick start your learning.

Where

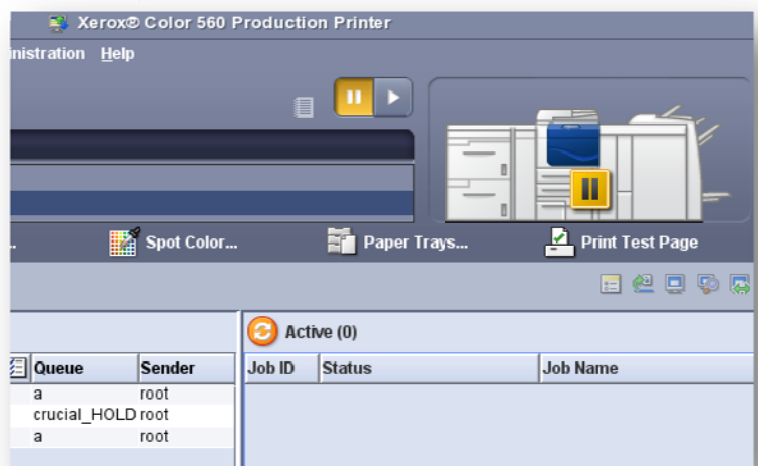
Getting Started is multimedia based and available for download from www.xerox.com/freelflowgettingstarted

The multimedia version will also be available on the “Customer Documentation” CD-ROM, inside the folder named “Getting Started FreeFlow Print Server Multi-media Program.”

What

Getting Started with the FreeFlow Print Server covers topics including:

Basic Printing



- Print Server Tour and Job Flow
- How to Submit Jobs
- How to Manage Jobs
- How to Customize your Screen

Managing Color

- Calibrating Color for Your System
- Color Management Flow
- Adjusting Color Balance

What's New with FreeFlow Print Server:

- Changes to the User Interface
- New Features
- Enhanced Features
- Performance Improvements

How Long?

Getting Started with the FreeFlow Print Server will take approximately one hour to complete. At the end there are exercises that you can print and take to your system so you'll be able to start using the FreeFlow Print Server to print and manage basic jobs quickly.

Client and Remote Support

The software pack includes Windows and Macintosh printer drivers. Xerox recommends visiting <http://www.support.xerox.com/> to obtain the latest drivers and applications. For example, 20+ multinational languages are available and other apps can be found here.

- 7 full-featured drivers
- Support for Xerox® Global print driver
- Xerox® fully featured print drivers
- Windows® 2000/XP®/Vista™/
- Microsoft® Windows WHQL
- dynamic tray and status reporting
- Macintosh® OS 10.6 or higher for drivers
- Adobe PostScript® Printer Descriptions (PPD)
- HTTP and HTTPS browser submission support
- IPP for job submission and system status
- Support of IPv4 and IPv6 (dual mode supported)



Variable Data Printing

- Xerox® VIPP®, Line Mode, Database Mode,
- Native PPML v2.1 Graphic Arts
- Optimized PostScript and PDF
- Subset application support—user defined or data driven
- Color background form support
- Indefinite job size support
- Dynamic cache architecture

Workflow

- Adobe PDF Print Engine 2.0 support
- Single rendering engine with the Adobe Common Rendering Engine
- Xerox® Print Drivers deliver consistent experience office through production
- Simultaneous receiving, selecting, processing and printing of jobs
- Extensive job management capabilities at page, job and queue levels
- Preflight, preview and soft proof for job accuracy
- Layout/Imposition standard (e.g., booklet, 4-up)
- Hot folder drag-and-drop support for Windows®, Macintosh®, Linux® and UNIX®
- JDF job ticket support
- FreeFlow Remote Print Server for remote fleet management
- Page exception programming allows for last minute job changes at the server
- Adjustable creep for signature booklet layouts
- Right-side and bottom-side bind edge support
- Edge enhancement refines text
- Delivers all office features as well as production features in one solution

Considerations and Notes

Color Management Notes

- ✓ Calibration: Xerox recommends using most common media used on-site when performing platen calibration. You should also know that the Xerox 550/560 FFPS has a superb fleet calibration pre-loaded. You will find the product produces very good color results ‘out of the box’.
- ✓ The i1spectrophotometer option is a “plug and play” hardware only option. Upon plugging an XRITE i1 into the FFPS DFE, you will have a choice of either Platen Calibration OR i1 spectrophotometer calibration path. Platen and i1 produce very good quality and are nearly equal for normal calibration. However, an i1 hardware unit is needed to perform the FFPS advanced profile setups.

Scanning & Imaging Notes

- ✓ Adobe PDF Print Engine is supported and is a standard queue button on all FFPS Xerox 550/560's. A customer can choose to use either the legacy PDF or new APPE print paths for their PDF workflows. The default queue setting is the traditional (aka legacy) PDF print path. Xerox recommends testing key apps on both pathways for image quality and performance.
- ✓ A new set of Scan-to-Anywhere features has been added that includes a host of new capability: scan-to-PC, scan-to-USB, scan-to-email and scan-to-web. The legacy FFPS "Scan Back" feature is no longer supported on Xerox 550/560 and has been superseded by the "scan-to-all" options.

Networking

- ✓ AppleTalk Protocol is available but is not "on" by default. Modern Mac OS uses TCP/IP. For legacy AppleTalk protocol, Click "enable" AppleTalk in the FFPS Network User Interface.
- ✓ Novell is no longer supported for NDS. For FFPS Xerox 550/560 v8 model only.
- ✓ Network Setup: In order to obtain full feature functionality the site will need 1 Network drop but Xerox requires 2 IP numbers. Therefore, Xerox requires 1 network drop and 2 IP. NOTE: All network setup UI's, cables and hardware is supplied with every FFPS Xerox 550/560.