

# Elixir



## DesignPro Tools for AFP Migration Guide

---

Elixir Technologies Corporation  
721 East Main Street  
Ventura, CA 93001

Copyright ©2008 by Elixir Technologies Corporation.  
All rights reserved.  
DP200801V300

All product names and trade names used herein are trademarks of their respective owners.

To report any errors you might find, please send a note to [errata@elixir.com](mailto:errata@elixir.com). Please note: e-mails are used to correct future versions of this guide and may not receive an individual reply. For technical support, please see “[Customer Support](#)” on page 10.

# Contents

<b>Chapter 1: Introduction</b>	<b>5</b>
DesignPro Tools Overview .....	6
Associated DesignPro Tools Applications and Utilities .....	6
About This Guide? .....	7
Who Should Use This Guide? .....	7
Related Guides .....	8
Conventions .....	8
Typographic Conventions .....	8
Symbolic Conventions .....	9
Getting the Answers You Need .....	10
Customer Support .....	10
Elixir Web Site .....	11
Elixir Training .....	11
Product Help .....	12
Release Notes .....	12
 <b>Chapter 2: Migration from Elixir Application Suite to DesignPro Tools</b>	 <b>13</b>
DesignPro Tools Components .....	13
Before You Install: A Checklist .....	14
Installation .....	16
Supported File Formats in DesignPro Tools .....	19
PostScript, PCL and PDF Support .....	20
Licensing .....	20
Configuration .....	20
Feature Set Comparison .....	20
Setting Input and Output Parameters .....	24
Raster vs. Vector Objects .....	30
Understanding Workflows .....	31
Resource Migration .....	34
Migrating: Directory Structure .....	37
Migrating: Forms .....	42
Font Lists .....	44

---

Tags .....	46
Proof Printing .....	47
Color Palettes and Shade Patterns.....	47
Migrating: Fonts.....	47
Migrating: Images .....	47
Migrating: Visual PPFA .....	48
File Settings .....	52
Font and Segment Mapping .....	53
Migrating: Resource Mapping .....	53
Custom Tools and Processes .....	55
Dispatcher and User Tools .....	55
Transformer.....	55
Loader .....	55
Proof Printing .....	55
Conversion from Microsoft Windows and PDF File Formats.....	56
Proofing Variable Data Applications .....	56
Automated Processing.....	57

## Index

**59**

## Chapter 1:

# Introduction

Welcome to the *DesignPro Tools for AFP Migration Guide*. This guide provides information on migrating from the Elixir Application Suite (EAS) to DesignPro Tools. This guide is not intended to replace the recommended DesignPro Tools training course. Elixir recommends that all DesignPro Tools customers attend an Elixir DesignPro Tools training class.

Information on the following is included in this guide:

- Before you install: a checklist.
  - Installation notes for the migrating user.
  - Information on licensing and configuration.
  - Setting up input and output parameters for reading and writing resources.
  - A workflow comparison between Elixir Application Suite and DesignPro Tools for creating a form.
  - Resource migration.
  - When and how to upgrade your existing resources to DesignPro Tools.
  - Specific instructions for certain applications that migrating users should know.
  - Custom tools and processes.
- A look at a few Elixir Application Suite tools that are not supported, or are supported differently in DesignPro Tools.



It is important that all migrating users read this chapter prior to installing, configuring, and using DesignPro Tools.

This chapter defines who should use this guide, describes the guides within the DesignPro Tools documentation set, and provides Elixir Customer Support and training information.

---

# DesignPro Tools Overview

DesignPro Tools for AFP provides a Windows-based, visual design environment for the rapid and cost-effective creation of resources and variable designs for the AFP print environment. DesignPro Tools supports integrated OGL and PPFA editors that make it easy to create and edit the overlays, fonts, images, and data layout needed for AFP printing. Once designed, resources can be saved in the AFP Source or Object format.

Developed according to the published IBM Advanced Function Presentation (AFP) standards, DesignPro Tools supports Record Format, as well as Traditional PageDefs and enables the management and conversion of resources to different formats.



Forms and overlays are two terms for the same resource object. This guide uses these terms interchangeably.

## Associated DesignPro Tools Applications and Utilities

DesignPro Tools is a collection of editors, applications and utilities:

- **DesignPro Manager:** a Windows-based desktop program for managing and converting resources to multiple supported formats. You can also open other DesignPro Tools applications using the Manager.
- **DesignPro Form Editor:** an advanced form design tool used to create and edit forms for AFP printers.
- **DesignPro Visual PPFA:** an application for developing overlay, FormDef and PageDef resources for IBM PPFA printing. Also allows advanced options such as selecting a sample data file for PageDef creation and proofing with that sample data file onscreen.
- **DesignPro Font Editor:** a complete font design application used for creating and editing AFP raster fonts, as well as Elixir and PCL fonts. You can also open True Type fonts in this editor.
- **DesignPro Graphics Editor:** a full service bitmap editor providing various transformations and commands for tiling graphics into raster fonts.

- 
- **Elixir PrintDriver Pro:** a utility for “printing” Windows documents into forms. Windows documents can be opened in their original format and printed using the Elixir PrintDriver into forms. All supported formats can be created using the PrintDriver.
  - **Elixir Scout:** a system service that watches directories for a file or an event to perform any number of actions like opening an executable (EXE or COM), running a batch file (BAT or CMD), or selecting a process (DLL).
  - **Elixir Viewer:** displays printstream and resource files.
  - **AFPDS Tree:** displays the hierarchical structure of AFPDS files and the binary data contained in the structured field records.

## About This Guide?

This guide is divided into two chapters:

**Chapter 1: [Introduction](#)**, provides a general introduction to DesignPro Tools and the DesignPro Tools Migration Guide.

**Chapter 2: [Migration from Elixir Application Suite to DesignPro Tools](#)**, provides information on migrating from Elixir Application Suite to DesignPro Tools.

## Who Should Use This Guide?

Anyone migrating from Elixir Application Suite to DesignPro Tools should start here and review this guide for instructions and notes pertaining to installation, configuration, and using DesignPro Tools.

This guide assumes you are already familiar with Elixir Application Suite. In addition, you should be familiar with Microsoft Windows operations, printer and font management operations and PC peripherals. You should also have access to reference manuals for PC software and hardware, including any printers you are using for the design and print processes.

---

## Related Guides

If you require further information about a specific topic or wish to obtain product background information, reference the following resources, all of which are part of the DesignPro Tools for AFP documentation package.

- *DesignPro Tools for AFP Getting Started Guide*
- *DesignPro Tools Manager for AFP User Guide*
- *DesignPro Tools Form Editor for AFP User Guide*
- *DesignPro Tools Visual PPFA User Guide*
- *DesignPro Tools Font Editor for AFP User Guide*
- *DesignPro Tools Graphics Editor for AFP User Guide*

## Conventions

Elixir products adhere to Microsoft Windows conventions for using menus, menu commands, dialogs, command buttons, icons and the mouse. See your Windows manual for more information.

Refer to the following for more information on the conventions used in this guide:

- [Typographic Conventions](#) (page 8)
- [Symbolic Conventions](#) (page 9)

## Typographic Conventions

Following typographic conventions are used in this guide to identify special information.

Convention	Information Type/Example
<b>Bold type</b>	Text for you to enter. Field names, windows, toolbars, buttons and workspace areas within a task step. Example: From the <b>File</b> menu, select <b>Open</b> . Example: Click <b>Edit Property Settings</b> .
<i>Italic type</i>	References to other documents and books.  <i>Example: refer to the DesignPro Tools Form Editor for AFP User Guide.</i>



---

## Symbolic Conventions

Look for the following symbols as you read through this guide to identify special information:



The **Note** symbol calls your attention to additional information.



The **Tip** symbol highlights a helpful tip.



The **Shortcut** symbol calls your attention to an easier way of accomplishing a task.



The **Warning** symbol warns you of problems you might encounter.




The **Migrating Users** symbol provides notes and tips for anyone migrating from a previous version of DesignPro Tools or Elixir Application Suite.



The **Question** symbol refers you to the online help for more information.

To open online help:

- From the **Help** menu, select **Help Topics**.
- or
- Click  in an open dialog

## Getting the Answers You Need

Elixir Technologies provides you with multiple ways to learn and use DesignPro Tools:

- [Customer Support](#) (page 10)
- [Elixir Web Site](#) (page 11)
- [Elixir Training](#) (page 11)
- [Product Help](#) (page 12)
- [Release Notes](#) (page 12)

## Customer Support

If you purchased this product directly from Elixir Technologies, you can contact the Customer Support Center for your region at the number listed below.



If you have purchased this product from some other source, please contact the authorized support representative from that source. Elixir provides customer support for products purchased directly from Elixir.

### North and South America:

- +1 805 641 5900 ext. 3  
Monday - Friday, 7:00 am to 4:00 pm Pacific Standard Time; if closed, press 2 to reach Elixir's extended Support coverage.
- [Elx\\_support@elixir.com](mailto:Elx_support@elixir.com)

---

### **Asia Pacific:**

- [Asia\\_support@elixir.com](mailto:Asia_support@elixir.com)

### **Europe:**

- +44 (0) 207 993-4811  
Monday - Friday, 6:00 am to 4:00 pm Central European Time
- +1 805 641 5900 ext. 3  
Monday - Friday, 4:00 pm to 2:00 am Central European Time
- [Europe\\_support@elixir.com](mailto:Europe_support@elixir.com)

An Elixir Product Specialist will take your call and ask for the following information:

- Your name, organization, telephone number and address.
- Elixir product name and version number.
- A complete description of the problem, including any error messages printed or displayed on your monitor.

## **Elixir Web Site**

You can obtain product support from the Elixir web page at [www.elixir.com](http://www.elixir.com).

Select **Support** to:

- Ask a question of Elixir Support.
- Download the latest product releases and patches.
- View the latest product Release Notes.
- Sign up for Elixir Training.
- Renew your product license.

## **Elixir Training**


Elixir Technologies offers training for its full-range of Windows-based products. For more information, contact Elixir Learning at +1 805 641 5900, ext. 4.

---

## Product Help

Elixir software uses the Microsoft Windows Help program to provide online help for all product functions.

This online tool includes step-by-step procedures that you can follow as you work

- **Context-Sensitive Help** can be activated from within the software for certain dialogs by clicking  available on the top right corner of a dialog.
- **Online Help** can be opened from any component from the **Help** menu by selecting **Contents**.

## Release Notes

Release Notes display at the start of product installation so you can review them before beginning the installation process. Once installation completes, you can access Release Notes from the product CD at *drive:\Relnotes*. There are two formats of the Release Notes file: Relnotes.pdf and Relnotes.txt. The TXT file can be viewed using either Notepad or WordPad. The PDF file can be viewed using Adobe Reader.

## Chapter 2:

# Migration from Elixir Application Suite to DesignPro Tools

### In this chapter...

- [Before You Install: A Checklist](#)
- [Installation](#)
- [Setting Input and Output Parameters](#)
- [Understanding Workflows](#)
- [Resource Migration](#)
- [Custom Tools and Processes](#)

## DesignPro Tools Components

DesignPro Tools is available in the following configurations:

- DesignPro Tools Professional (supported output format: AFP, Xerox, Elixir, PCL, PS, PDF)
- DesignPro Tools for Xerox (supported output formats: Xerox, Elixir, PCL, PS, PDF)
- DesignPro Tools for AFP (supported output formats: AFP, Elixir, PCL, PS, PDF)
- DesignPro Form Editor (supported output formats: Elixir, PCL, PS, PDF)

The DesignPro Form Editor package provides only Elixir form (ELX, EFR), font (HDR) and image (LP3) output formats. A Professional, AFP, or Xerox package is required to convert these resources into other print formats.

---

Most customers purchase the standalone Form Editor package when they have more than one person designing/editing forms. In such a situation, they purchase multiple standalone Form Editors to generate resources in Elixir formats and one full package of DesignPro Tools (Professional, Xerox, or AFP depending on their print environment) to convert the Elixir resources.



Forms and overlays are two terms for the same resource object. This guide uses these terms interchangeably.

## Before You Install: A Checklist

Before you start installing, configuring, or using DesignPro Tools, here are a few questions you should think through and find answers to:

- 1 Should I install DesignPro Tools on a separate PC or use the PC I am already using for Elixir Application Suite?
  - DesignPro Tools can coexist with Elixir Application Suite without any issues. For more information, see [“Installation”](#) on page 16.
  - You should not install DesignPro Tools on a PC that already has Elixir software other than the Elixir Application Suite installed, such as Opus.
  - DesignPro Tools can be installed on a PC with Transformation Suite and PageMiner only if the base release for all products is the same. For example, DesignPro Tools Version 3.00 can be installed with version 8.00 of Transformation Suite and version 4.00 of PageMiner. Contact Elixir Customer Support before installing DesignPro Tools on a PC which has Transformation Suite and/or PageMiner installed.
  - DesignPro Tools can be installed with Vitesse on the same PC. Contact Elixir Customer Support before installing DesignPro Tools on a PC which has Vitesse installed.
- 2 What Operating System and Print Compilers do I need for DesignPro Tools?
  - See the Software Requirements section in Chapter 2: Installation of the *DesignPro Tools for AFP Getting Started Guide*.
- 3 Do I need to worry about concurrent licensing for Elixir Application Suite and DesignPro Tools?
  - No – See [“Licensing”](#) on page 20 in this chapter.

- 
- 4 Now that DesignPro Tools supports using native resources, should I use native resources or Elixir resources (or both)?
    - See [“Resource Migration”](#) on page 34 in this chapter.
  - 5 Do I need to move my existing resources into the DesignPro Tools environment immediately?
    - No – See [“Resource Migration”](#) on page 34 in this chapter.
  - 6 Can I use EAS AppBuilder PageDefs and FormDefs in Visual PPFA?
    - Yes – See [“Resource Migration”](#) on page 34 in this chapter.
    - For step by step instructions on upgrading a PageDef and FormDef to Visual PPFA, see [“Migrating: Visual PPFA”](#) on page 48 in this chapter.
  - 7 Am I using any custom processes (for example, programs built in Visual Basic to facilitate certain Elixir Application Suite tasks) with my Elixir Application Suite system?
    - If so, you will need to identify these and determine if they are still needed in DesignPro Tools.
    - Shortcuts to programs and utilities can be added to the DesignPro Manager; see the *DesignPro Tools Manager for AFP User Guide* for instructions on adding shortcuts in the DesignPro Manager.
  - 8 Am I using the Dispatcher, Transformer, or Loader in Elixir Application Suite?  
Refer to [“Custom Tools and Processes”](#) on page 55 for more information:
  - 9 Am I using the Transformer in Elixir Application Suite?
    - See [“Transformer”](#) on page 55 in this chapter.
  - 10 Am I using any custom font or segment mappings?
    - See [“Migrating: Resource Mapping”](#) on page 53 in this chapter.

---

## Installation

Should you install DesignPro Tools on a separate PC from Elixir Application Suite? The choice you make depends on your workflow, and how you want to integrate the new software into your environment. Some considerations for both options are listed below to help you make decision.



The *DesignPro Tools for AFP Getting Started Guide*, provided with every package of DesignPro Tools and also available on the product install CD, describes the step-by-step process of installing DesignPro Tools. Please make sure that you go through this guide before installing DesignPro Tools.

### When installing DesignPro Tools on a separate PC:

- If you want to open existing Elixir Application Suite resources, you will need to create a profile referencing the location of those resources on your PC or network. Profiles are created in the DesignPro Manager. For details, refer to *DesignPro Tools Manager for AFP User Guide*.

### When installing DesignPro Tools on the same PC as Elixir Application Suite:

- Back up all existing Elixir Application Suite resources before installing DesignPro Tools.  
The DesignPro Tools installation will not interfere with your existing resources in any way. However, once you open and save a resource in DesignPro Tools, you may not be able to open that same resource in Elixir Application Suite again due to updates in the Elixir format. This specifically applies to ELX forms; when opened in Elixir Application Suite after modification in DesignPro Tools, the Elixir Application Suite Form Editor may ignore some objects. For this reason, you may wish to have a backup version of each original resource, in the event you need it again within Elixir Application Suite.

#### **Recommended Installation Approach:**

If you are installing DesignPro Tools on a machine that has an Elixir Application Suite installed, we recommend that you install DesignPro Tools in a separate folder. Elixir Application Suite is always installed under a folder *drive:\Elixir*, so it is recommended that you change the target folder name to an alternate name during the DesignPro Tools installation process. Recommended alternate folder names are:

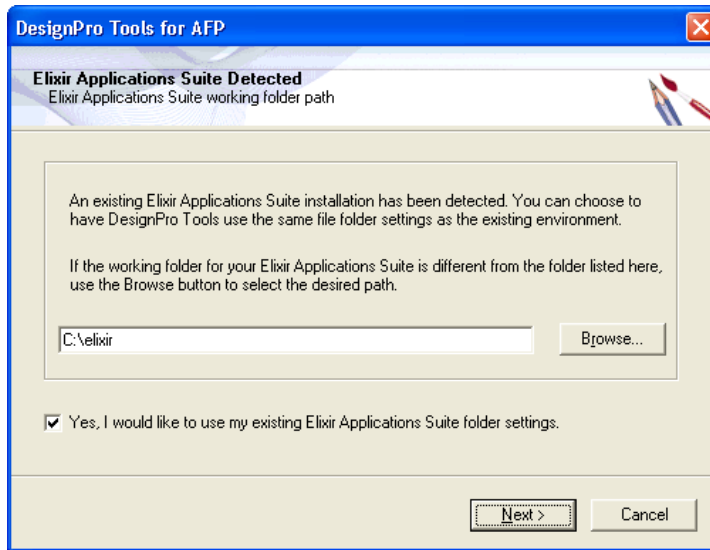
- DPT
- DPTools
- DesignPro



---

Installing DesignPro Tools in a separate and unique folder will help you keep your old and new resources separate. It will also make it easier to identify older resources that are no longer in use in the event you wish to move these older resources to another location or delete them entirely. Naming the DesignPro Tools folder as suggested above will also assist the Elixir Customer Support Team in helping you with questions.

- During installation, a previous Elixir Application Suite installation is recognized. You will be asked if you want to use the same resource location for DesignPro Tools as is being used for Elixir Application Suite.



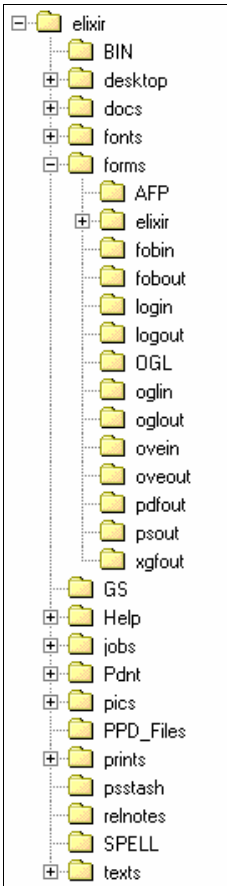
*The existing EAS file structure is recognized during install. You are prompted to select a resource location for the new installation.*



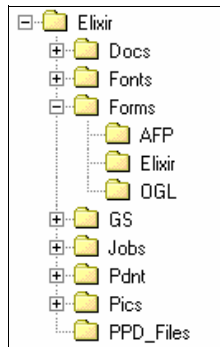
The complete installation process and all software and hardware requirements are documented in Chapter 2: Installation of the *DesignPro Tools for AFP Getting Started Guide*.

The DesignPro Tools installation creates a set of folders organized by resource type that is slightly different than Elixir Application Suite systems. The input and output folders for each resource type have been eliminated and a single folder for each type is used. However, many of the Elixir resource folder locations remain the same. For example, Elixir fonts are located in *drive:\Elixir\Fonts\Elixir* for both Elixir Application Suite and DesignPro Tools.

The EAS directory structure. Each resource type has an input and an output folder.



The DesignPro Tools directory structure. Notice that there is only one folder for AFP overlays. This includes both input and output overlays.



*The EAS directory structure. Each resource type has an input and an output folder.*

---

**If you choose to use a different location for your resources** and you want to use Elixir Application Suite resources in DesignPro Tools, you will need to create a profile referencing the Elixir Application Suite resource location.

Profiles are created in the DesignPro Manager. For instructions on creating profiles, refer to the *DesignPro Tools Manager for AFP User Guide*.

**If you choose not to use a different location for your resources**, you will need to be vigilant about resources needed in Elixir Application Suite.



Forms, images, and fonts can use the same extensions in DesignPro Tools as are used in Elixir Application Suite. Resources are not completely backwards compatible, which means any file opened and saved in DesignPro Tools may not open correctly in Elixir Application Suite. This specifically applies to ELX forms and any AFP format resources created in DesignPro Tools. New functionality supported in DesignPro Tools is not available in EAS.

Physical path settings for each resource folder are controlled globally by virtual folders in the DesignPro Manager, and managed within each DesignPro Tools application using the Profile Selection dialog. Changes in virtual folders are posted to a profile file, and multiple profile files can be created to enable custom combinations of resource paths.

If you have multiple customers or projects that require discrete collections of resources, you can create individual profiles for each collection of resources and activate those profiles during resource editing sessions. For more information on the directory structure, refer to [“Migrating: Directory Structure”](#) on page 37 in this chapter.

## Supported File Formats in DesignPro Tools

DesignPro Tools lets you work with native AFP resources, thus eliminating the need for resource conversion. Note that *compilers* are included in DesignPro Tools. The following native formats are supported in DesignPro Tools:

### AFP

- Forms: OVE, OGL
- Fonts: AFP bounded and unbounded, ATM Type 1, True Type
- Images: AFP PSEG, JPG, BMP, TIFF, PNG, PCX
- PageDefs/FormDefs: Object (OBJ), Source (PPFA)

---

## PostScript, PCL and PDF Support

In addition to AFP format, DesignPro Tools also provides option for saving your forms in PostScript, PCL and PDF format. When saved in PostScript or PCL formats, forms can be easily proof printed on network printers. PDF format provides more flexibility and portability. You can attach the form to an e-mail and send it for review or approval.

## Licensing

For DesignPro Tools, you will use a new license file. The presence of the new license file will not interfere with the existing license for Elixir Application Suite.

## Configuration

The configuration and setup files for DesignPro Tools are stored independently of the Elixir Application Suite configuration files. This enables both systems to run independently from one another, even when installed on the same PC.

Converter settings (Desktop settings in Elixir Application Suite) will need to be manually reset in each DesignPro Tools application. These settings are accessed by selecting **Tools, Application Format Setting** and **Input Formats, Output Formats**, and/or **Elixir Properties** from the application menu. You can also save the input and output properties in a custom EPM file and then load the same EPM file in each application. You can save and load EPM files by selecting **Tools, Application Format Setting, Load** or **Save**.



For more information on saving and loading EPM files, refer to the *DesignPro Tools Manager for AFP User Guide*.

## Feature Set Comparison

In this section, a comparison of Elixir Suites and DesignPro Tools is provided in the following tables. The first table provides a general comparison between Elixir Application Suite and DesignPro Tools. The second table provides a comparison between Elixir Form and DesignPro Form Editor. The third table compares APPBuilder and Visual PPFA.

---

## Elixir Application Suite vs. DesignPro Tools:

Elixir Application Suite	DesignPro Tools
Elixir Application Suite editors work only with Elixir-format resources, requiring Elixir Desktop to be used to convert native formats into Elixir formats before any further usage.	The need to pre-convert resources has been eliminated. Instead, a resource, in its native AFP format, is loaded directly into the editing application using standard File/Open function. No pre-conversion of resources (font, form, image) is required.
Rigid folder structure for conversions and other operations.	Folder structure can be customized. Files can be input from or output to any Windows folder on the local machine or on the network.
User interface provided very few customizing options.	Windows-standard, highly intuitive interface with full customizing toolbars.
16 bit environment.	32 bit environment.
AppBuilder for AFP – Option available for additional price.	Integrated into DesignPro Tools. Includes Visual PPFA for handling PPFA PageDef and FormDef. Imports all DBF files created in AppBuilder for AFP. Visual PPFA is available only in DesignPro Tools for AFP and Professional.
PrintDriver – Option available for additional price.	Integrated into DesignPro Tools. Includes the enhanced PrintDriver Pro that enables user to convert Microsoft Windows documents into AFP and Elixir forms. It also converts resources, such as fonts and images, into target formats on the fly. For more information, refer to <a href="#">“Conversion from Microsoft Windows and PDF File Formats”</a> on page 56.
Elixir Viewer – Option available for additional price.	Integrated into DesignPro Tools. Includes Elixir Viewer to view various file formats.
No automation capability.	Includes Elixir Scout for automation of frequently performed operations. For more information, refer to <a href="#">“Automated Processing”</a> on page 57.
No Profiles facility for multiple users.	Profiles for multiple users that preserve individual environment settings for each user.

<b>Elixir Application Suite</b>	<b>DesignPro Tools</b>
No Virtual folders capability.	Virtual folders enable easy management of multiple sets of resources.
Online Help available.	Improved Help including context-sensitive, Windows-based online help.

### **Elixir Form vs. DesignPro Form Editor:**

<b>Elixir Form</b>	<b>DesignPro Form Editor</b>
Input formats: ELX only. Cannot open native AFP formats.	Input: ELX, EFR, OGL, OVE, EP (Elixir PrintDriver Form) and EMF (Windows EMF).
Output formats: ELX only. Requires Converter for conversion to native AFP formats.	Output: EFR, OGL, OVE, PostScript, PCL, PDF and Image File (TIF). No conversion required.
No support for full color images.	Full color, highlight color and black and white images fully supported.
Supports image formats: LP3, TIF, BMP, LW8. Conversion required for other formats.	Supports image formats: JPG, BMP, TIF, PCX, PNG, AFP PSegs (IM GOCA, IOCA). No conversions required.
Font barcode support. No BCOCA support.	Full support for BCOCA and font barcodes. Easy barcode inclusion to design through drag-and-drop.
Grid display and Snap to Grid. No Guidelines.	Grid display, Snap to Grid and Guidelines for easy alignment and positioning of objects.
Limited zoom level control.	Zoom level control from 10% to 1000% with 'Fit to page' and 'Whole page' options.
No proofing through preview option available.	Instant proofing capability by preview in Elixir Viewer. Proof print direction from the Viewer on local network PCL/PS printers. For more information, refer to <a href="#">“Proofing Variable Data Applications”</a> on page 56.
Standard toolset for lines, boxes, ellipses, paths and text.	Enhanced toolset for lines, boxes, ellipses, paths and text.
No text import option, spell check available.	Import RTF and TXT files directly into your forms. Edit text just like in a word processor. Split, join, justify and reformat text. Run spell check as you type or spell check the entire text block.
No inline editing of images.	Edit images within the DesignPro Form Editor.

<b>Elixir Form</b>	<b>DesignPro Form Editor</b>
Font mapping is available through mapping files that require manual editing.	Includes Resource Map that provides a visual interface for easy mapping of fonts.
No resource manager.	Resource Manager provides a visual listing of all resources, including fonts, graphics and color palettes, which are used in a particular form. Provides shortcut for easy inclusion, removal, or export of these resources.
No option to save or load font lists.	Save and import font lists. Import fonts into font lists automatically with RTF files.
Data Tags are supported. No visual depiction of tag structure in a form.	Data Tags are supported. Manage window provides a Tag tree structure for easy manipulation and management of tags in a form.
16-bit graphical user interface.	32-bit graphical user interface. Easy to use for users familiar with Microsoft Windows application.

#### **APPBuilder vs. Visual PPFA:**

<b>APPBuilder</b>	<b>Visual PPFA</b>
No Record format PageDef support.	Visual PPFA is the first visual editor in the industry to offer Record format PageDef support.
No PPFA source code display.	Real-time display of PPFA source code.
No comment import from PPFA source.	Auto-import of comments from PPFA source.
No facility to generate Object list.	Object lists available.
No option to load or view data for mapping on PageDef.	Load and view sample data in EBCDIC, ASCII and mixed-mode formats.
Data to be defined when fields are entered. No drag-n-drop of data possible.	Define records and fields by drag-n-drop of fields to the Design Area.
Preview with live data requires IBM viewer, not easy to setup.	Instant preview option with live sample data in Elixir Viewer (included). Proof validity as IBM ACIF is used in the background to generate the proof.
N-UP option available.	Basic and enhanced N-UP supported with improved viewing capabilities.
Floating page segment and form support; no viewing capabilities.	Floating page segments and forms visible in work area.

APPBuilder	Visual PPFA
Limited to black and white and highlight color support, no color support.	Color and full color support for RGB, CMYK and OCA color. Black and white and highlight colors are also supported.
16-bit graphical user interface.	32-bit graphical user interface. Easy to use for users familiar with Microsoft Windows applications.



Visual PPFA is available only in DesignPro Tools Professional (supports both Xerox and AFP environments) and DesignPro Tools for AFP (supports AFP environment only).

## Setting Input and Output Parameters

In each of the DesignPro Tools applications, you can access input and output property dialogs for each resource type. Input properties define how a resource is read by the application for viewing and editing, and output properties define how a resource is written or saved to a target format.

In Elixir Application Suite, all of these properties are set when converting resources on the Desktop. In DesignPro Tools, these properties can be accessed in each application when opening and saving, as well as in the DesignPro Manager when using the Conversions dialog.

This section shows you how to access these property dialogs.



In this section, DesignPro Form Editor is used to display input and output property dialogs. All DesignPro Tools applications access and display property dialogs using the same steps.

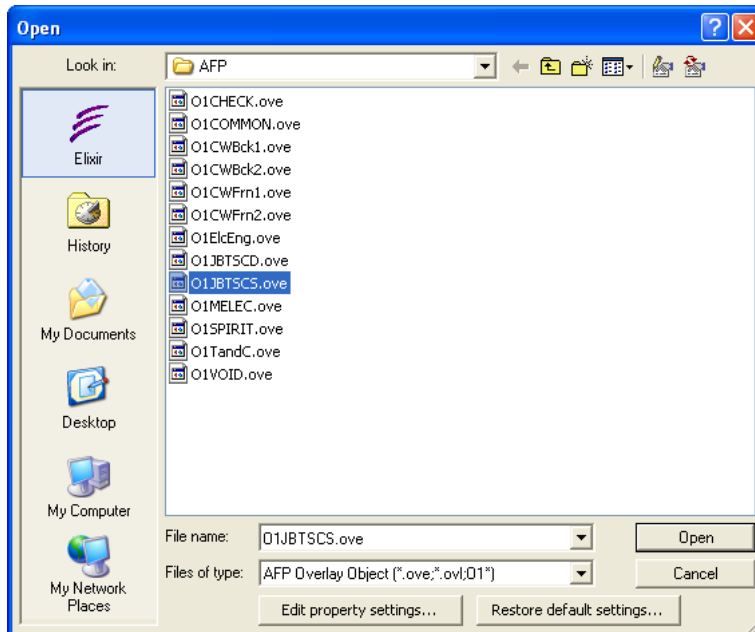


- 
- 1 From the **Start** menu, select **Program, Elixir Applications, DesignPro Tools, DesignPro Form Editor**.

To access input property pages when opening a resource:

- 2 From the **File** menu, select **Open**.
- 3 From the **Files of Type** drop-down list, select **AFP Overlay Object (\*.ove; \*.ovl; OI\*)**

Selecting any format other than EFR displays the Edit Property Settings and Restore Default Settings buttons.



*Selecting AFP Overlay Object (\*.ove; \*.ovl; OI\*) in the Files of Type drop-down list.*

---

**4** In the left pane, click **Elixir**.

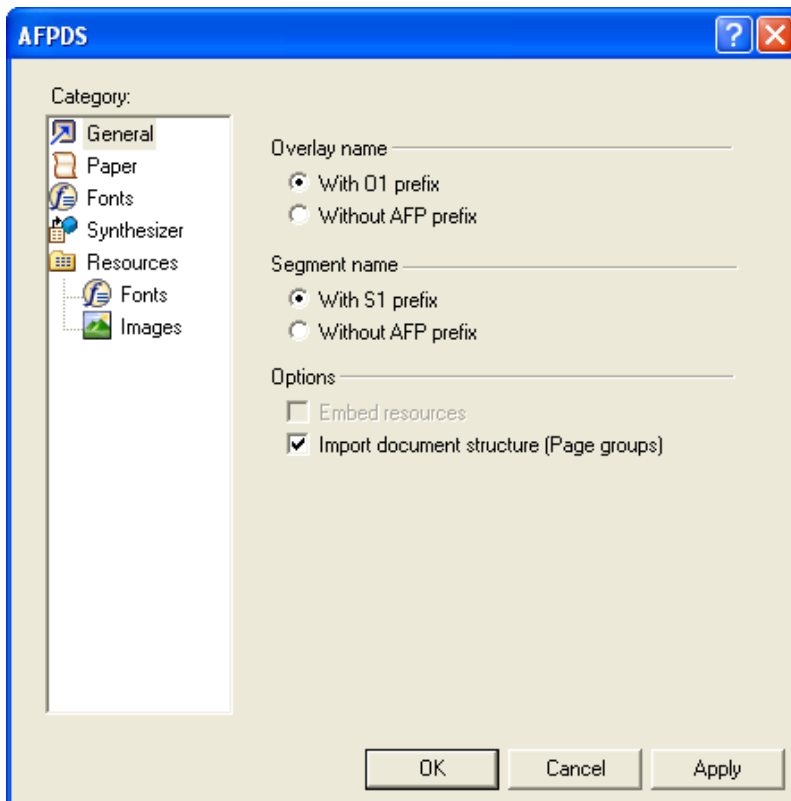
The Elixir icon automatically locates the default directory for AFP forms from the open profile.



The path will automatically update to the specified profile's directory for the selected Files of type if the Elixir icon is selected in the left pane of the dialog. For example, the default profile lists drive:\Elixir\Forms\Afp as the directory for AFP forms. You can also open a form from a different location by browsing for the desired path in the Look in drop-down list.

**5** Click **Edit Property Settings**.

The AFPDS dialog displays. Properties set in this dialog determine how a form is read when a file is opened in DesignPro Form Editor.



*The AFPDS input property dialog displays.*



For information on all the options available in the input (parser) property dialog(s), refer to the *DesignPro Tools Online Help*.

To open the Online Help, click  available on the top right of an open dialog.

- 6 Click **OK** to close the dialog.
- 7 Select an OVE resource and click **Open**.

The selected form opens in the DesignPro Form Editor. If the form does not open properly and messages display in the Messages window, you will need to close the file, review and set the appropriate property settings carefully and then reopen the form.



Properties set at the time of opening a file are not saved for future use. These properties are set at the document level and are not retained once the open process is completed. To set the required properties as default, select **Tools, Application Format Setting, Input Formats** and the required input format from the application menu. These properties are set at the application level and are retained by the system. You are not required to set the properties each time you open a file.

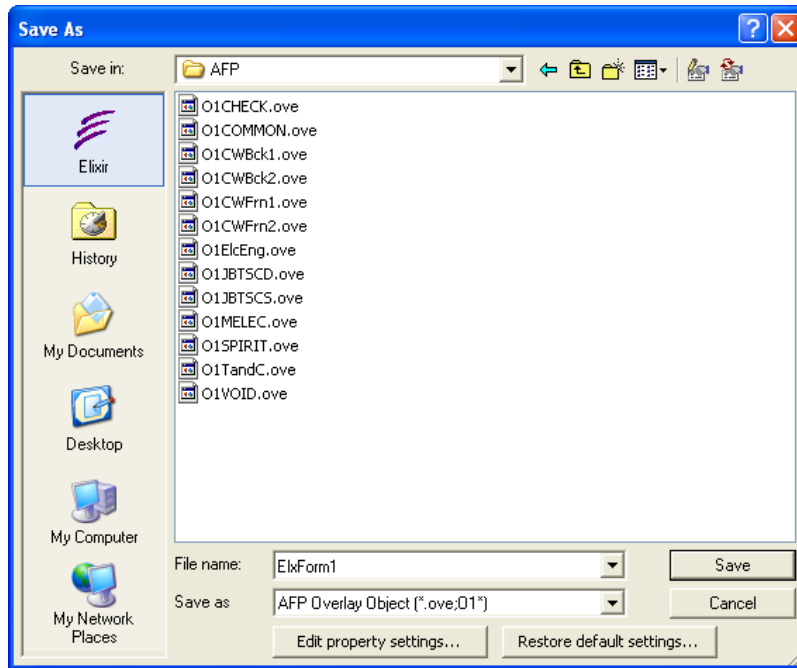
To access output property pages when saving a resource to a target format:

- 1 Select **File, Save as** from the menu.
- 2 From the **Save as** drop-down list, select **AFP Overlay Object (\*.ove;O1\*)**.  
Selecting any format other than EFR displays the Edit Property Settings and Restore Default Settings buttons.

---

**3** In the left pane, click **Elixir**.

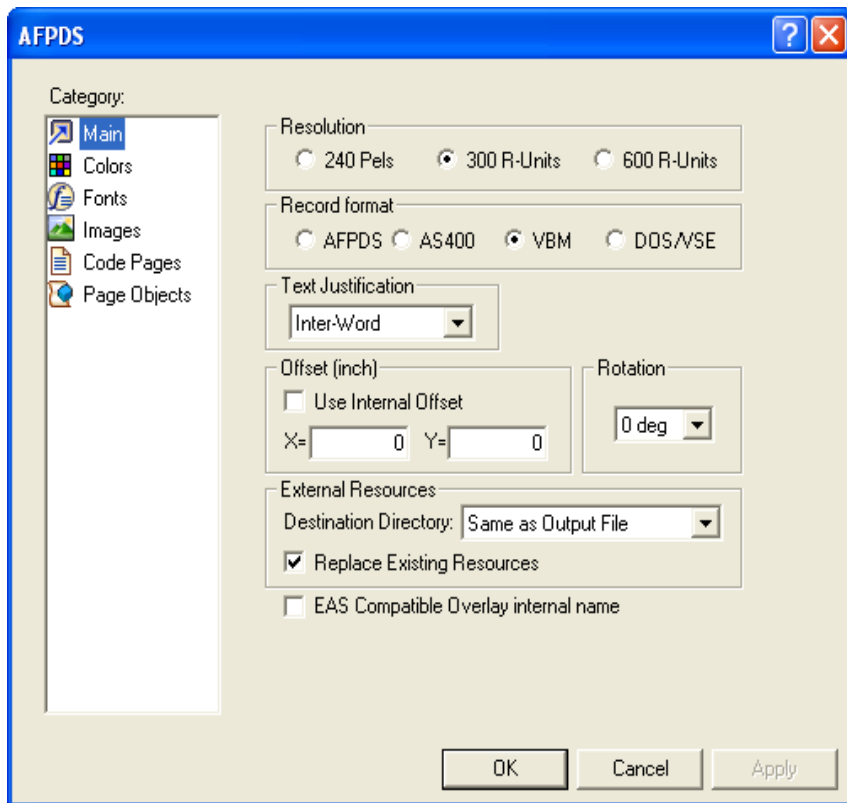
The Elixir icon automatically locates the default directory for AFP forms from the open profile.



*Selecting AFP Overlay Object (\*.ove;O1\*) in the Save as drop-down list.*

**4** Click **Edit Property Settings**.

The AFPDS dialog displays Properties set in this dialog affect how the form is saved to the target format.



*The AFPDS output property dialog displays.*



For information on all the options available in the output (converter) property dialog(s), refer to the *DesignPro Tools Online Help*.

To open the Online Help, click  available on the top right of an open dialog.

---

5 Click **OK** to close the dialog.

6 Name the output file and click **Save**.

The form saves in the selected format. If error messages display after saving the form, resave the file after reviewing and setting the appropriate property settings carefully.



Properties set at the time of saving a file are not saved for future use. These properties are set at the document level and are not retained once the save process is completed. To set the required properties as default, select **Tools, Application Format Setting, Output Formats** and the required output format from the application menu. These properties are set at the application level and are retained by the system. You are not required to set the properties each time you save a file.

## Raster vs. Vector Objects

DesignPro Tools Professional and AFP enable you to convert objects placed on a form to either raster or vector objects.

Raster objects consists of a pattern of individual dots, called pixels, arranged in a grid. Each pixel has a specific location and color. Raster images display jagged edges when magnified on screen or printed at a large magnification. Raster objects use a simple dot-based format, which is easier for a printer to process. AFP high-speed laser printers are fast because they use very simple resources. The simpler the format, the faster the printer can print.

Vector objects are defined geometrically using a formula. Vector graphics do not lose clarity or detail when scaled to any size or printed at any resolution. Vector objects take valuable computing time to create, since each font must be scaled as it is used. This slows printers when printing.

To specify objects as either vector or raster: select **Tools, Application Format Setting, Output Formats** and **AFPDS** from the application menu. From the dialog that displays, select the **Page Objects** category. You can select from the following options:

- **Use GOCA graphics (do not rasterize):** Uses GOCA graphics objects for images in a form, FormDef, or PageDef. The objects are treated as a vector object. AFP architecture processes GOCA objects efficiently, and the quality is very high in the printed output.
  - **Draw area borders separately:** Causes the interior of an object and the border lines to be drawn as two separate raster images. For example, for a shaded box, the interior shade would be drawn as one single borderless shape, and the outline would be drawn as another shape with no interior. When a form is re-opened, the object interior and border are treated as two separate objects.
- **All rasterize to image under Overlapping Objects (with unsupported mixing mode):** Rasterizes overlapping objects into images. The AFP format only supports the Source mixing mode; therefore, overlapping objects in the overlay need to be rasterized into images.



For information on all the options available in the output (converter) property dialog(s), refer to the *DesignPro Tools Online Help*.

To open the Online Help, click  available on the top right of an open dialog.

## Understanding Workflows

In this section, two standard workflows for form development are outlined for both Elixir Application Suite and DesignPro Tools. The first workflow compares creating a new form. The second workflow compares modifying an existing form.

### Workflow 1: Creating a new form with new resources

Elixir Application Suite	DesignPro Tools
Download and/or place all resources for the form (fonts and images) in the appropriate Elixir standard directory structure.	Download and/or place all resources for the form (fonts and images) in the appropriate directory structure, as defined by the working profile (customizable).
Convert original image (BMP, PCX, TIFF, or page segment) to the Elixir LP3 format.	Use BMP, PCX, TIFF, JPG, PNG, or AFP page segment formats directly on the form in the DesignPro Form Editor or  Convert original image to the Elixir LP3 format.

---

Elixir Application Suite	DesignPro Tools
Use Windows outline fonts (Adobe Type 1 or True Type) or  Convert Windows or AFP fonts to the Elixir HDR format.	Use AFP raster or Windows outline fonts (Adobe Type 1 or True Type) or  Convert Windows or AFP fonts to the Elixir HDR format.
Create form in the ELX format.	Create form in the EFR or ELX format or  Create form in the OVE or OGL format.
Convert images to page segments.	Save form to the AFP format (images can be saved to the AFP format at the same time or separately).
Convert fonts to AFP fonts.	Save form to the AFP format (fonts can be saved to the AFP format at the same time or separately).
Convert form to AFP form, Source, or Object format.	Save form to the AFP format (fonts and images can be saved to the AFP format at the same time or separately).
Upload to host.	Upload to host.

As you can see, the basic workflow is the same with some additional options and increased flexibility provided in DesignPro Tools. Also, the need to separately convert before and after form creation has been eliminated. You can work directly with AFP resources. If you prefer the flexibility and functionality supported by the Elixir format, you can still keep the source in Elixir, then save to the AFP format directly in the DesignPro Form Editor.

For instructions on accomplishing each of these workflow steps, reference *DesignPro Tools Online Help*.



---

## Workflow 2: Editing an existing form

<b>Elixir Application Suite</b>	<b>DesignPro Tools, using Elixir as the source format</b>	<b>DesignPro Tools, using native resources only</b>
Download and place all resources (form, fonts and images) in the appropriate Elixir standard directory structure.	Download and place all resources (form, fonts, and images) in the appropriate directory structure, as defined by the working profile (Profile can be customized).	Download and place all resources (form, fonts, and images) in the appropriate directory structure, as defined by the working profile (Profile can be customized).
Convert original image (BMP, PCX, TIFF, or page segment) to the Elixir LP3 format.	Convert original image to the Elixir LP3 format.	Use AFP page segment directly on the form in the DesignPro Form Editor.
Convert AFP fonts to the Elixir HDR format.	Convert AFP fonts to the Elixir HDR format.	Use AFP raster fonts directly on the form in the DesignPro Form Editor.
Convert AFP form to the Elixir ELX format.	Convert AFP form to the Elixir EFR or ELX format.	Use AFP form directly in the DesignPro Form Editor.
Modify form and save as ELX.	Modify form and save as EFR or ELX.	Modify form and save as OVE or OGL (fonts and images can be re-saved to AFP format if necessary).
Convert images to page segments.	Save form to the AFP format (images can be saved to AFP format at the same time or separately).	No conversion required.
Convert fonts to AFP fonts.	Save form to the AFP format (fonts can be saved to AFP format at the same time or separately).	No conversion required.
Convert form to AFP form, Source, or Object format.	Save form to the AFP format (fonts and images can be saved to AFP format at the same time or separately).	No conversion required.
Upload to host.	Upload to host.	Upload to host.

---

Again, the basic workflow is the same with additional options and increased flexibility in DesignPro Tools. Working with native resources is a great benefit, especially when there are only slight modifications to be made to a form in production: no pre or post-conversion step is necessary.



See [“Resource Migration”](#) on page 34 for an in-depth discussion on whether to use Elixir or native resources. The tables above are provided to show a typical workflow using Elixir and native resources in DesignPro Tools, as opposed to Elixir Application Suite.

## Resource Migration

When upgrading to DesignPro Tools, one of your main concerns may be all of your existing resources: when and how should you migrate them to DesignPro Tools?

Initially, it is recommended that you run both systems in parallel while you learn the new workflows and tools. Existing resources can be opened in DesignPro Tools, so you can update the required resources by saving them into the new format.



It is recommended that you backup your resources before you start using them in DesignPro Tools. Once resources are modified in DesignPro Tools, they may not open correctly in Elixir Application Suite.

One of the major improvements introduced in DesignPro Tools is its ability to use native resources without pre or post-conversion steps. You can choose to use all native, all Elixir, or a combination of both types of resources.



Native refers to an environment's own format. AFP resources, such as OVE or OGL forms, AFP fonts, and Page Segments are native resources.

All current Elixir Application Suite print resources are in Elixir legacy formats, which include ELX, LP3, HDR, and AppBuilder database files. The DesignPro Tools editors support the loading and editing of all these legacy formats. There are, however, some important changes to note:

- 
- Elixir Form legacy resources  
DesignPro Tools can open all ELX files created in previous Elixir Application Suite versions.  
Note that the DesignPro Form Editor creates a new file type with an EFR extension. Forms can be saved to the legacy ELX format for use in Elixir applications that cannot use the EFR files, such as Opus. ELX files can also be reopened in Elixir Application Suite, although objects that are not supported by Elixir Application Suite will be ignored.
  - Visual PPFA resources  
Visual PPFA imports PageDefs and FormDefs from AppBuilder 4.10 or later versions. If you are migrating to Visual PPFA from AppBuilder, and you want to import PageDefs and FormDefs from AppBuilder, you must upgrade to AppBuilder 4.10. Once you have upgraded to AppBuilder 4.10, your files are ready for importing into Visual PPFA. Step by step instructions are provided in [“Migrating: Visual PPFA”](#) on page 48.
  - Visual PPFA creates new Elixir formats for PageDefs and FormDefs. Each resource exists as an individual file. PageDefs are identified with an EPD extension and FormDefs with an EFD extension. AppBuilder cannot read the DesignPro Tools PageDef and FormDef formats.
  - Previous EAS AFP systems  
Opening or importing output resources created by DesignPro Tools and Visual PPFA in previous EAS systems is not recommended, even when the file extensions have not changed. This includes source and compiled forms, compiled PageDefs and FormDefs, fonts, and page segments created or compiled in one of the DesignPro Tools applications. This is due to improvements and updates made to the AFP architecture.

DesignPro Tools supports native, legacy, and its own resource formats. Even with the ability to use native resources, you may consider keeping your source files in the Elixir format. Some advantages of the Elixir format:

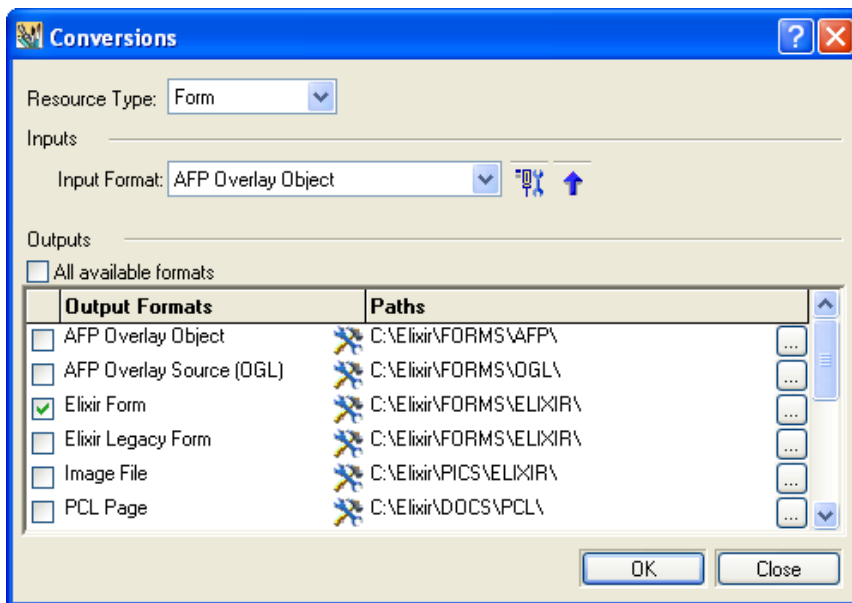
- Files can be used for multiple environments. If your original file is in Elixir format, it can be modified and then saved to AFP, PCL, PDF and other print formats.
- DesignPro Form Editor supports many features not available in native formats. For example, AFP forms place each line of text individually. The Elixir format can keep text blocks as paragraphs, making them easier to edit.
- Visual PPFA PageDefs and FormDefs saved in Elixir Native format support many features not available in PPFA source. For example, names for records, fields, and other tree objects are not retained and interpreted as comments in PPFA source. Also, internal comments and environmental settings, such as Template forms, are only saved in the Elixir format.

---

Once you become accustomed to the DesignPro Tools environment, and are ready to stop using Elixir Application Suite, you have two choices:

- Continue to migrate resources one-by-one, as modifications are needed.
- Migrate all resources at once by converting them in the Conversions dialog of DesignPro Manager.

The Conversions dialog can convert many files to single or multiple output types in one session. You can open the Conversions dialog by dragging and dropping files on the Converters icon in the Applications tab in the Manager.



*A sample batch conversion using the Conversions dialog.*



For instructions on converting resources, reference the *DesignPro Tools Manager for AFP User Guide*.

---

## Migrating: Directory Structure

When migrating, you will want to verify that your profiles are set up correctly in the DesignPro Manager. You should check profiles before beginning any work in DesignPro Tools.

A profile holds all of the information that was contained by the System.ini file in Elixir Application Suite. A default profile is created and stored in the SystemData.ini file, based on the information provided during installation, when DesignPro Tools is installed. This file establishes the basic operating environment and is located at *drive:\Documents and Settings\Current User\Application Data\Elixir Technologies\Profiles*.

The profile also includes the directory structure used to identify, read, and write resources. When you load a profile in DesignPro Manager, you can verify that the directory structure is correct by viewing your virtual folders. Virtual folders are pointers to physical folders on your drive or network.

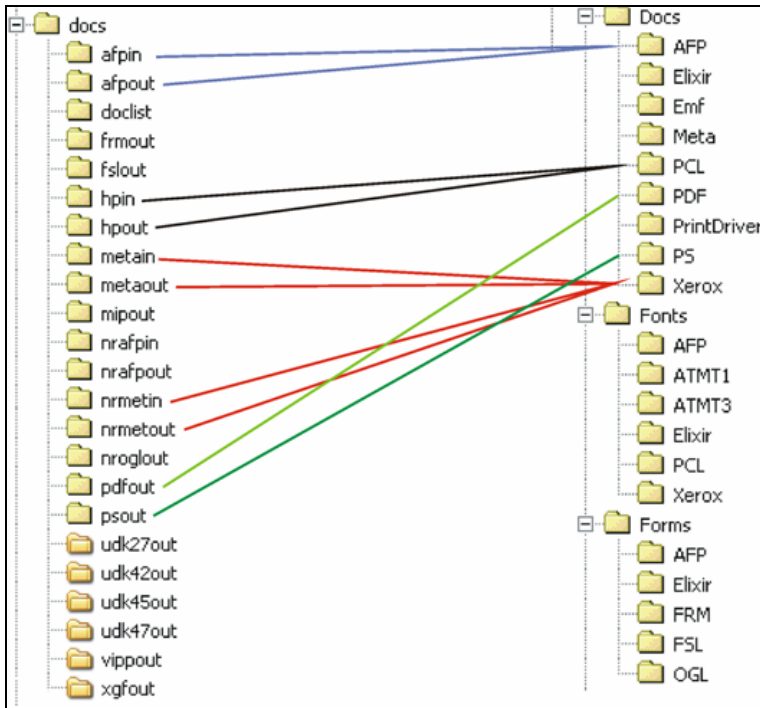


For more information about virtual folders and to learn how to map new folders and unmap existing folders, refer to Chapter 3: Configuration in the *DesignPro Tools for AFP Getting Started Guide*.

The following sections provide a comparison between the Elixir Application Suite and DesignPro Tools directory structure based on the default profile. Many of the old directories are no longer mapped because the files formats they previously contained are either obsolete or are no longer supported.

## Documents

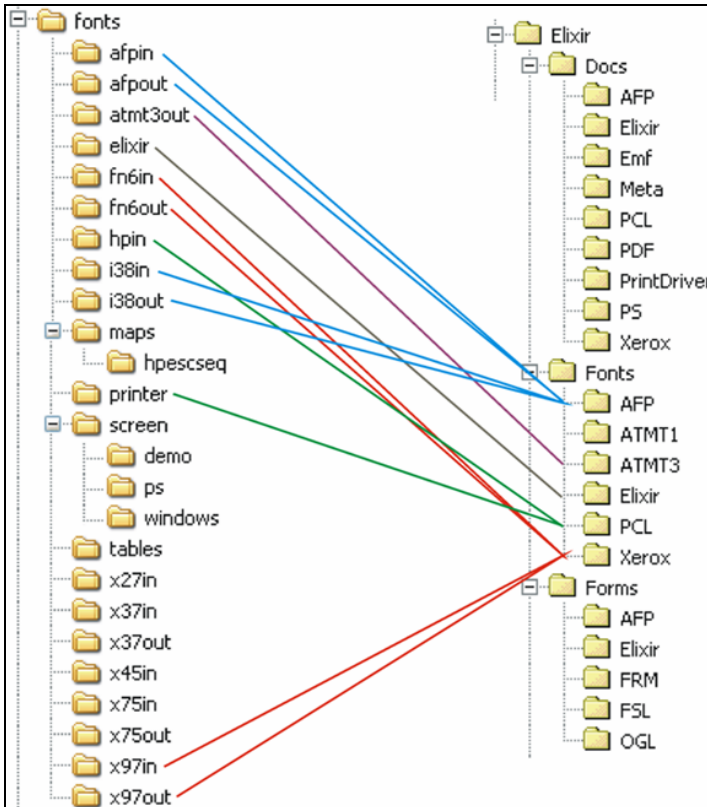
In the default profile, the documents are stored under the Documents folder located at *drive:\Elixir\Docs* in DesignPro Tools. The image below provides a comparison of the Elixir Application Suite and DesignPro Tools directory structure for documents. The input and output folders for each resource type have been eliminated and a single folder for each type is used.



*Comparison of the “Docs” directory structure in Elixir Application Suite and DesignPro Tools.*

## Fonts

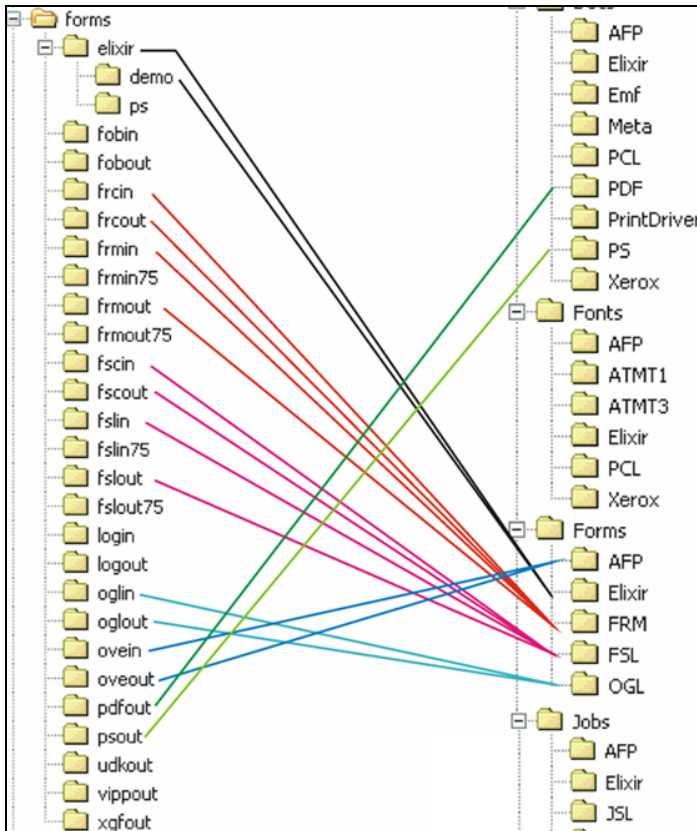
In the default profile, fonts are placed under the fonts folder located at *drive:\Elixir\Fonts* in DesignPro Tools. The image below provides a comparison of the Elixir Application Suite and DesignPro Tools directory structure for fonts. The input and output folders for each resource type have been eliminated and a single folder for each type is used.



*Comparison of the "Fonts" directory structure in Elixir Application Suite and DesignPro Tools.*

## Forms Folder

In the default profile, the forms are placed in the forms folder located at *drive:\Elixir\Forms* in DesignPro Tools. The image below provides a comparison of the Elixir Application Suite and DesignPro Tools directory structure for forms. The input and output folders for each resource type have been eliminated and a single folder for each type is used.



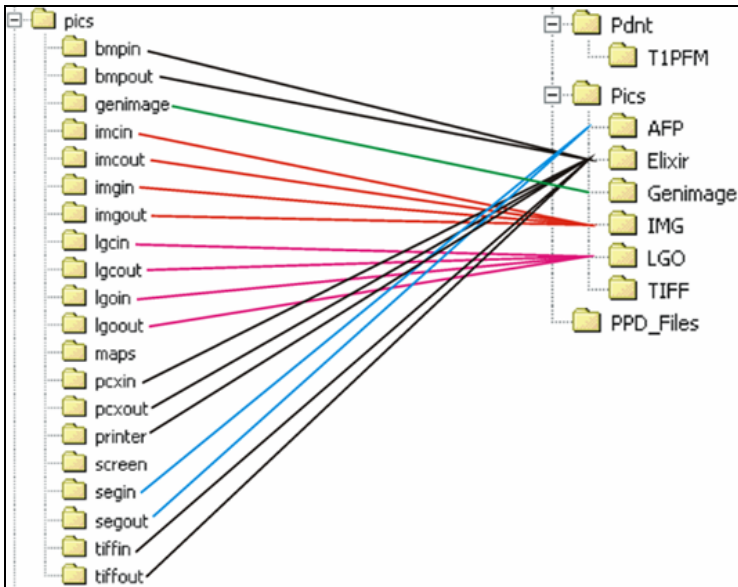
*Comparison of the “Forms” directory structure in Elixir Application Suite and DesignPro Tools.*



---

## Graphics Folder

In the default profile, the graphics are stored under the graphics folder located at *drive:\Elixir\Graphics* in DesignPro Tools. The image below provides a comparison of the Elixir Application Suite and DesignPro Tools directory structure for graphics. The input and output folders for each resource type have been eliminated and a single folder for each type is used.

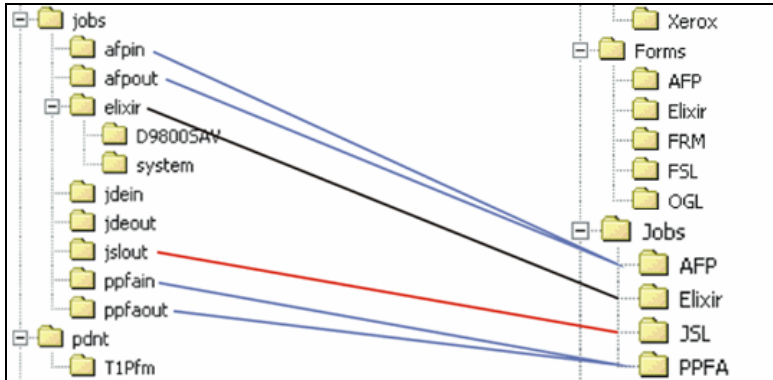


*Comparison of the “Pics” directory structure in Elixir Application Suite and DesignPro Tools.*

---

## Jobs Folder

In the default profile, the jobs are stored under the jobs folder located at *drive:\Elixir\Jobs* in DesignPro Tools. The image below provides a comparison of the Elixir Application Suite and DesignPro Tools directory structure for jobs. The input and output folders for each resource type have been eliminated and a single folder for each type is used.



*Comparison of the “Jobs” directory structure in Elixir Application Suite and DesignPro Tools.*

## Migrating: Forms

Once the profiles are verified, you can begin migrating your resources. DesignPro Tools does not require conversion of resources for the purpose of migration. You can simply open your existing resources in DesignPro Tools applications. If you have already used the Converter in DesignPro Manager to convert your forms, you can open them in DesignPro Form Editor and start editing them.

To open a form:

- 1 From the **Start** menu, choose **Programs, Elixir Applications, DesignPro Tools, DesignPro Form Editor**.
- 2 From the **File** menu, select **Open**.

- 
- 3 From the **Files of Type** drop-down list, select your resource type.  
Existing Elixir resources use the ELX file extension. The Edit Property Settings and Restore Default Settings buttons display when you select a format other than EFR.
  - 4 Browse to select a form.  
ELX forms are located at *drive:\Elixir\Forms\Elixir*.
  - 5 Click **Edit Property Settings**.  
The properties dialog displays for the selected resource type. Properties set in this dialog affect how a form is read when opening the file in the DesignPro Form Editor.
  - 6 Set the appropriate settings for your form and click **OK** to close the dialog.
  - 7 Click **Open**.  
The selected form opens in the DesignPro Form Editor. If there are issues when opening the form, you will need to close the file, then review and set the appropriate property settings carefully before reopening the form.



For information on all the options available in the input (parser) property dialog(s), refer to the *DesignPro Tools Online Help*.

To open the Online Help, click  available on the top right of an open dialog.

The Elixir EFR format provides a single format that saves to virtually all print and presentation formats, including AFP, PostScript, PCL, and PDF. The ability to have a common file as the source for all environments improves the overall efficiency for resource management and production.

To save the form as an EFR:

- 1 From the **File** menu, select **Save as**.
- 2 From the **Save as** drop-down list, select **Elixir Form (\*.efr)**.
- 3 Name the file and click **Save**.

Elixir legacy ELX files created in Elixir Application Suite can be opened directly into DesignPro Form Editor without any special preparation. It is important that the paths to the Elixir legacy fonts and images are specified correctly so that DesignPro Tools can locate the resources.

---

Due to limitations in the ELX format, certain AFP page objects, when converted from AFP to Elixir in Elixir Application Suite, are rasterized as images and stored in a special folder. The path to this folder is read during DesignPro Tools installation, if the option is selected to use Elixir Application Suite path settings, and set in the default profile. If the path is not set correctly, it can be set by modifying the `SYSTEM_GENIMAGE_FILEPATH` variable in the profile. This folder is typically `drive:\Elixir\Pics\Genimage`.



Editing profiles is an advanced topic and is not covered in this guide. For more information on profiles, refer to the *DesignPro Tools Manager for AFP User Guide*.

## Font Lists

DesignPro Tools now provides support for directly importing Elixir Application Suite external font list files. P2lfonts.lst files created in Elixir Application Suite can now be loaded in DesignPro Tools.

To import a font list as LST:

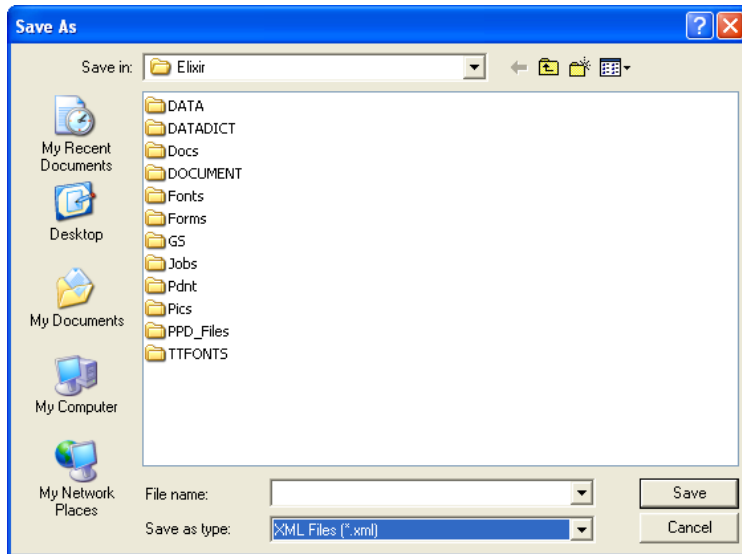
- 1** Open a form in the DesignPro Form Editor.
- 2** From the **File** menu, select **Import, Font List**.  
The Open dialog displays.
- 3** Select **LST Files (\*.lst)** from the **Files of Type**.
- 4** Select the required font file and click **Open**.  
The file opens in DesignPro Form Editor.

DesignPro Tools supports a new font list format for importing and exporting font lists during form creation. The new font list is saved in an external XML file. The XML file can be archived or printed for easy reference, and imported when creating new forms.

---

To export a font list as XML:

- 1 Open a form in the DesignPro Form Editor.
- 2 From the **File** menu, select **Export, Font List**.  
The Save as dialog displays.



*Saving a font list as an XML file.*

- 3 Name the font list and click **Save**.  
The file is saved in XML format.



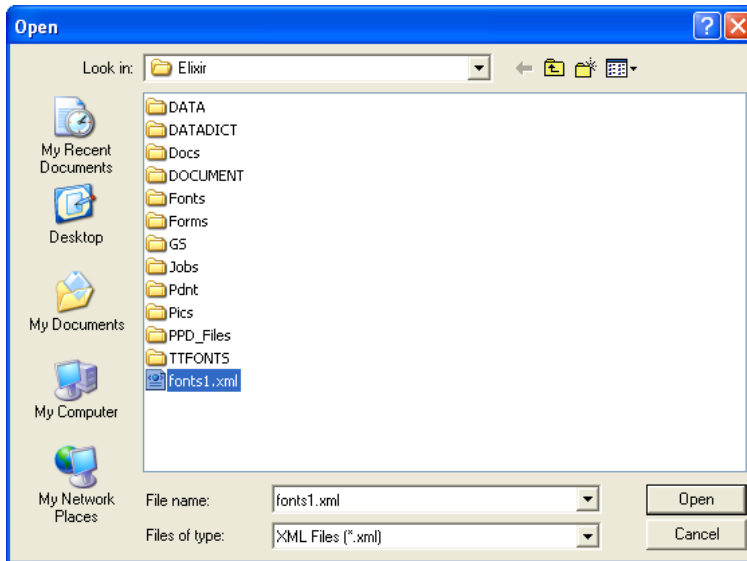
The exported XML font list cannot be opened in the Elixir Application Suite Form Editor.

---

To import an XML font list in DesignPro Form Editor:

- 1 From the **File** menu, select **Import, Font List**.

The Open dialog displays.



*Loading an XML font list file in DesignPro Form Editor.*

- 2 Select a Font List and click **Open**.

The font list loads in the open form.

## Tags

Tag support is available in DesignPro Tools. The tags in ELX forms are recognized in DesignPro Form Editor. The tag structure can be viewed in the **Tag Structure** tab of the **Manage** window.



You cannot save tag commands to a target format unless you have purchased a tagging option (sold separately from DesignPro Tools).

---

## Proof Printing

The Elixir Application Suite requirement for HP soft fonts for proof printing no longer applies.

## Color Palettes and Shade Patterns

DesignPro Tools includes the same color palettes and shade patterns provided with Elixir Application Suite therefore, existing Elixir legacy forms using these palettes and patterns can be used in DesignPro Tools.

## Migrating: Fonts

Fonts can be migrated by opening an existing font and then saving it in DesignPro Tools. You can also use Elixir legacy fonts saved in Elixir Application Suite without modification in the DesignPro Tools editors. This includes both generic Elixir fonts and all AFP components. Remember that both Elixir Application Suite and DesignPro Tools use the same extension for fonts, so it is possible to overwrite existing fonts.



The font naming convention has changed in DesignPro Tools for half-point font sizes. The new naming convention does not start using the alphabet with a point size of 1. This means that a font created with DesignPro Tools may have the same name as an existing font, but would be a larger point size. If you use half-point font sizes, you may wish to create a virtual folder specifically for DesignPro Tools fonts.

## Migrating: Images

You can use Elixir legacy images saved in Elixir Application Suite in the DesignPro Tools editors without modification. DesignPro Tools supports other image formats, such as JPG, BMP, PNG, PCX, and TIFF, which do not need to be converted before they can be used in the DesignPro Tools editors.



Remember that both Elixir Application Suite and DesignPro Tools use the same extension for images, so it is possible that existing images might be overwritten.

---

## Migrating: Visual PPFA

Existing AppBuilder FormDefs and PageDefs can be migrated to Visual PPFA. There are two methods to import existing PageDefs and FormDefs in Visual PPFA.



AppBuilder resources cannot be converted using the **Conversions** dialog into the DesignPro Tools format. Each PageDef and FormDef must be opened and saved in Visual PPFA to migrate these resources.

### I. Importing PageDefs and FormDefs using the Elixir AppBuilder Document.dbf file in DesignPro Visual PPFA:

- 1** From the **Start** menu, choose **Programs, Elixir Applications, DesignPro Tools, DesignPro Visual PPFA**.  
DesignPro Visual PPFA opens.
- 2** From the **File** menu, select **Open**.  
The Open dialog displays.
- 3** From the **Files of Type** drop-down list, select **Elixir AppBuilder 4.xx (Document.dbf)**.



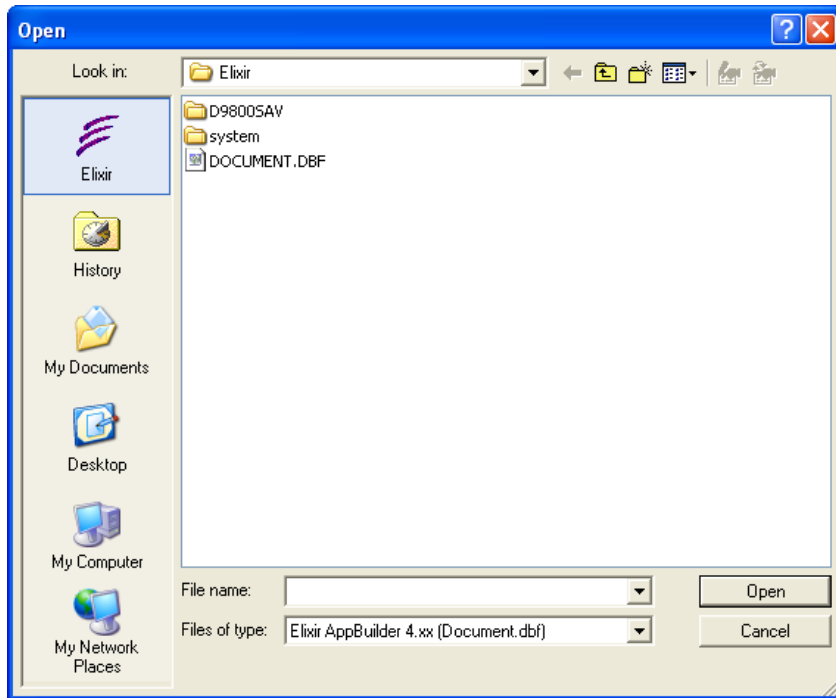
In order to migrate AppBuilder PageDef and FormDef resources, you must have AppBuilder version 4.10 or higher installed.

- 4** Browse to *drive:\Elixir\Jobs\Elixir* and select required database document.



---

This database stores all FormDef and PageDef information for Elixir AppBuilder.



*Selecting the AppBuilder database.*

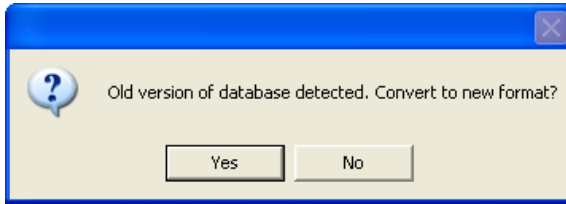


The location of the AppBuilder database should be specified in the active profile. You can map additional virtual folders to a profile in the DesignPro Manager.

**5** Click **Open**.

---

Visual PPFA prompts you to convert the old version of the database to the new format.

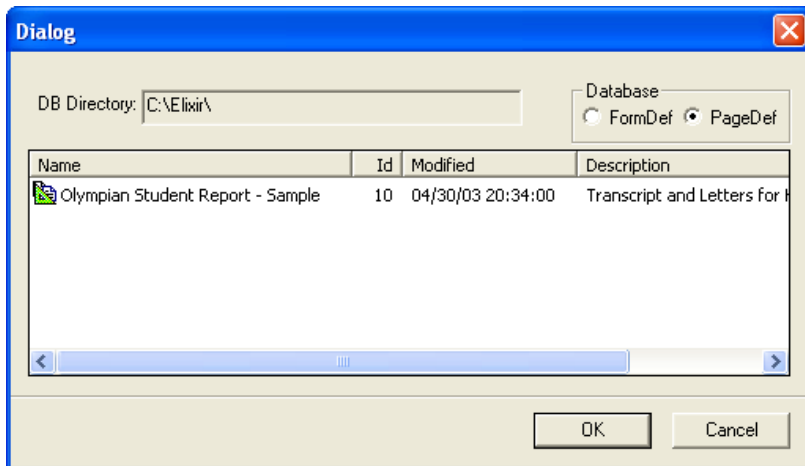


*You are prompted to convert an older version to the new format.*

**6** Click **Yes**.

**7** Select **PageDef** for Database.

All of the PageDefs in your AppBuilder database display. You can toggle back and forth between FormDefs and PageDefs, but can only open one resource type at a time.



*Selecting a Page Definition to open in Visual PPFA.*

**8** Select a PageDef from the list and click **OK**.

The PageDef opens in Visual PPFA.

---

**9** From the **File** menu, select **Save as, PageDef** from the menu.

**10** In the **Save as** drop-down list, select **Elixir PageDef (\*.epd)**.



The process for opening FormDefs is the same as for opening PageDefs. FormDefs are saved in Elixir FormDef (EDF) format.

**11** Name the new resource and click **Save**.

You have successfully migrated a PageDef.

## **II. Importing PageDefs and FormDefs individually:**

**1** Open Elixir AppBuilder for AFP from Elixir Desktop.

**2** From the **File** menu, select **PageDef, Load PageDef**.

The Load PageDef dialog displays.

**3** Select the required PageDef from the available list and click **OK**.

The selected PageDef loads in the AppBuilder Design Area

Follow the above-mentioned steps to load the required FormDef.

To export PageDefs and FormDefs using Elixir AppBuilder for AFP:

**1** From the **File** menu, select **Convert, Export**.

The Export Options dialog displays.

**2** Choose the appropriate options for your print environment.

PageDef and FormDef can be saved in source (PPFA), as well as object (AFPDS) formats.

**3** Specify the required names for the PageDef and FormDef.

**4** Click **OK**.

If you are using the default Elixir folders, the PageDefs and FormDefs will be exported to *drive:\Elixir\Jobs\Afpout* folder.

---

To import the exported files in DesignPro Visual PPFA:

- 1 Open DesignPro Visual PPFA.
- 2 From the **File** menu, select **Open**.
- 3 Browse to find the exported PageDef.
- 4 Select the required PageDef and click **Open**.
- 5 Select **Project, Load FormDef** from the menu to open the required FormDef.
- 6 Browse for the FormDef and click **Open**.
- 7 After editing, select **File, Save** and save the PageDef and FormDef one by one. Now, you have imported your Appbuilder application in Visual PPFA.



You need to make sure that the resources used in PageDefs and FormDefs exported from the Elixir AppBuilder for AFP are copied to the correct DesignPro Tools directory. Otherwise, error messages for missing resources will display in the Messages window. You can use DesignPro Manager to place the resources in the correct folders.

## File Settings

Each DesignPro Tools application offers both default property settings for resources and a method to temporarily override the defaults if needed for a specific application. You can change the default settings by selecting **Tools, Application Format Setting** and then choosing the required Input or Output format from the applications menu. To temporarily override these settings, click on the **Edit Property Settings** button in the **Open** dialog and make the required changes. Once you have saved the resource, the input or output properties revert back to their default settings.



For information on all the options available in the input (parser) and output (converter) property dialog(s), refer to the *DesignPro Tools Online Help*.

To open the Online Help, click  available on the top right of an open dialog.

# Font and Segment Mapping

Custom mappings for AFP are handled in the Elixir Resource Map. Any default mappings from EAS must be manually transferred to the Resource Map.

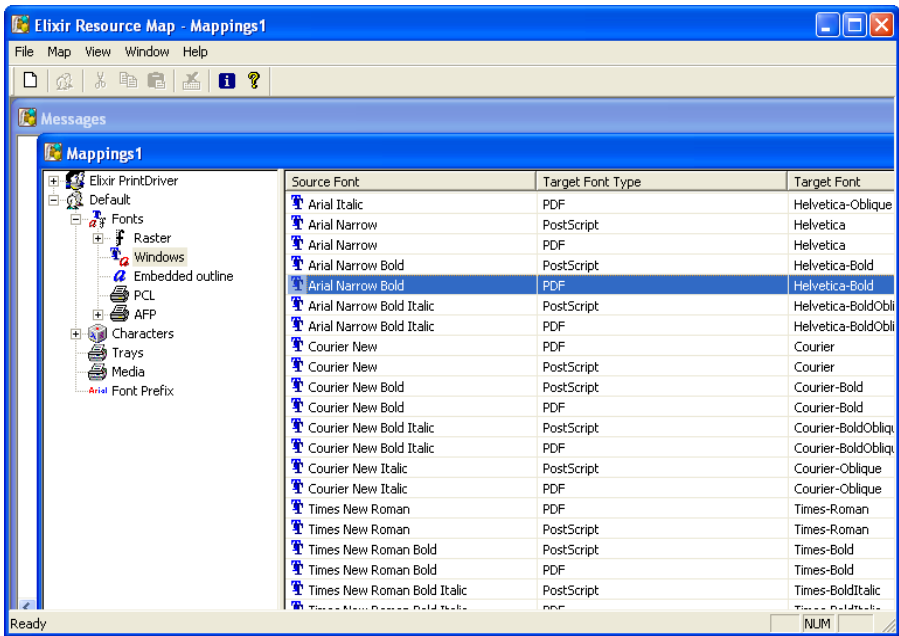
Settings for OGL MVS DDNAME or VM FILETYPE, defined in Default.fam in EAS, are defined in the property pages for OGL output in DesignPro Tools.

The same settings for images, defined in *drive:\Elixir\Pics\Maps\Default.sam* in EAS, are also defined in the OGL output property pages in DesignPro Tools.


# Migrating: Resource Mapping

In Elixir Application Suite, resource mapping is accomplished using a Psfont.map or a Default.fam file. All resource mapping for DesignPro Tools is located in the Elixir Resource Map. Any previous mappings within Elixir Application Suite mapping files need to be defined within the Resource Map.

- I From the DesignPro Manager, DesignPro Form Editor or Visual PPFA application menu, select **Tools, Resource Map**.  
The Resource Map opens.



*The default mapping within the Resource Map.*

- 
- 2** Click  next to the **Fonts** node.  
The available font types display.
  - 3** Select the font type for the **Source Font** column.  
The Source Font types include Raster, Windows, Embedded outline, PCL and AFP.
  - 4** Right-click the table on the right side of the **Mappings** window and select **Add** from the pop-up menu.  
The Font Mapping dialog displays.
  - 5** If mapping an Elixir or Windows font, click **Font Selection** in the **Source** category.  
The Open dialog displays.
  - 6** Select a font and click **OK**.
  - 7** Select the **Targets** category and select the output target types.  
Each output target type selected displays as a sub-category under the main Targets category.
  - 8** Select the output type sub-category and set the appropriate settings or choose a Target font.
  - 9** Click **Apply** and **OK**.  
The new mapping adds to the Resource Map.



For more information on Font Mapping, refer to the *DesignPro Tools Manager for AFP User Guide*.

---

## Custom Tools and Processes

Elixir Application Suite includes many tools, processes, and stand-alone utilities. Many of these were developed to work specifically with the Elixir legacy ELX format and are tied to the Elixir Application Suite directory structure. Shortcuts for the most commonly used tools and utilities are provided in the DesignPro Manager. New utilities that duplicate the functionality of some Elixir Application Suite utilities will be created for future DesignPro Tools releases.

### Dispatcher and User Tools

The Elixir Application Suite Desktop Dispatcher and User Tools provide shortcuts that open external programs, BAT files, or DOS operations. These functions are typically opened by dragging and dropping a resource onto the shortcut icon.

DesignPro Tools provides equivalent functionality in the Tools & Utilities tab in the Manager. Shortcuts are set up using a wizard. Open the associated utility or application by either double-clicking on a tool icon or dragging and dropping a file onto an icon.

### Transformer

The Transformer is not completely supported in this release of DesignPro Tools. The Elixir Application Suite Desktop Transformer does provide a series of functions that can be performed against Elixir forms and images. Full support will be available in a future release of DesignPro Tools.

### Loader

The Elixir Application Suite Desktop Loader is a simple interface for transferring files to and from an IBM host. The Desktop provides the ability to open a DOS version of a third-party terminal emulation package's file transfer program, which communicates with the IND\$FILE host program.

No equivalent to the Loader is provided in DesignPro Tools. This is due to the many easy-to-use Windows-based terminal emulation programs available and host support for common file transfer protocols like FTP.

### Proof Printing

The proof print process no longer requires special PCL fonts in this release of DesignPro Tools.

---

## Conversion from Microsoft Windows and PDF File Formats

Elixir PrintDriver Pro uses the Windows print function to convert Windows-based and PDF documents to Elixir or target printer format forms. It also provides several options for handling fonts and images. True Type and Adobe fonts can be converted to either AFP format fonts; document images can be converted to page segment format. Font and image conversions can be performed simultaneously during the form conversion. Files converted using Elixir PrintDriver Pro can be edited in the DesignPro Form Editor.

## Proofing Variable Data Applications

Elixir Viewer provided with DesignPro Tools is an improved version of the previous Elixir Application Suite Elixir Viewer. Elixir Viewer provides an on-screen viewing and test-printing of documents and forms to check object and text placement before final printing. You can also run data proofing with sample data to preview output from Visual PPFA. Data proofing combines Pagedefs, Formdefs, data, and other resources to generate an instant preview of the final job, therefore, eliminating the need to run proofing on production printers and saving valuable time.

Supported formats:

- AFP (MO:DCA) Document (AFP)
- AFP Overlay Object (OVE;01)
- AFP Overlay Source (OGL)
- Elixir DAT files (DAT)
- Elixir Document (EDF)
- Elixir Form (EFR)
- Elixir GDF (GDF), Elixir Legacy Form (ELX)
- Elixir PrintDriver Document (EPL)
- Elixir PrintDriver Form (EP)
- Postscript (PS), Windows EMF (EMF)

Elixir Viewer uses the same configuration and conversion capabilities as Elixir input parsers to display pages on-the-fly. Elixir setup files (EPM) configured using the Elixir Converters can be opened in Elixir Viewer to set up the properties for input formats. For more information on Elixir Viewer, refer to the *Elixir Viewer Online Help*.



---

## Automated Processing

DesignPro Tools provides Elixir Scout Manager for automating various processes. Elixir Scout is an integrated system service that watches directories for a file or an event. When a specified file is present or an event occurs, Scout can perform a user specified action. These actions can include launching an executable (EXE or COM), running a batch file (BAT or CMD), or selecting a process (DLL).

Elixir Scout Manager runs in the background as a Windows service, providing event-triggered directory "watch" capabilities. It is used to configure Scout and provide a UI window for operations. For more information, refer to the *Elixir Scout Manager Online Help*.



# Index

## A

AFP

fonts [43](#), [47](#)

AFPDS dialog [26](#)

AFPDS Tree

description [7](#)

AppBuilder

database [49](#)

ASCII [23](#)

Automated Processing [57](#)

automation [21](#)

## B

barcodes [22](#)

BAT files [55](#)

BCOCA [22](#)

BMP [22](#)

## C

CMYK [24](#)

colors

palettes, migrating [47](#)

configuration

migrating [14](#), [20](#)

conventions [8](#)

symbolic [9](#)

typographic [8](#)

Conversions dialog [24](#), [36](#)

converting

setting up parameters [24](#)

customer support [10](#)

## D

data

tags [46](#)

DBF [48](#)

DDNAME [53](#)

DEFAULT.FAM [53](#)

DesignPro Font Editor

description [6](#)

DesignPro Form Editor

description [6](#)

opening [25](#)

DesignPro Graphics Editor

description [6](#)

DesignPro Manager

description [6](#)

DesignPro Tools

AFPDS Tree See AFPDS Tree

applications [6](#)

Editors [6](#)

Elixir PrintDriver Pro [7](#)

Font Editor See DesignPro Font Editor

Form Editor See DesignPro Form Editor

Graphics Editor See DesignPro Graphics Editor

introduction [6](#)

Manager See DesignPro Manager

Scout See Elixir Scout

Utilities [6](#)

Viewer See Elixir Viewer

Visual PPFA See DesignPro Visual PPFA

DesignPro Visual PPFA

description [6](#)

dialogs

AFPDS [26](#), [29](#)

Conversions [24](#), [36](#)

Export Options [51](#)

Font Mapping [54](#)

Load PageDef [51](#)

Open [44](#), [48](#), [54](#)

Profile Selection [19](#)

Save As [45](#)

directory structure

Elixir Application Suite [18](#)

migrating [37](#)

Dispatcher [55](#)

document.dbf [48](#)

documentation

online [12](#)

Documents folder [38](#)

DocuMerge users, font lists [44](#)

DOS operations [55](#)

---

## E

EAS Loader [55](#)

EBCDIC [23](#)

EFD [35](#)

Elixir

- PageDef [51](#)

- PrintDriver Pro [7](#)

- Resource Map [53](#)

- resources, advantages [35](#)

- Scout [7](#)

- tags [46](#)

- Viewer [7](#)

Elixir Application Suite

- Desktop settings [20](#)

- directory structure [18](#)

- Loader [55](#)

- migrating FormDefs [35](#)

- migrating PageDefs [35](#)

- processes [55](#)

- utilities [55](#)

Elixir Scout

- automate processes [21](#), [57](#)

- description [7](#)

Elixir Viewer [21](#), [22](#), [23](#), [56](#)

Elixir web site [11](#)

ELX [22](#), [34](#), [43](#), [55](#)

environments

- multiple [35](#)

EPD [35](#), [51](#)

Export Options dialog [51](#)

extensions

- AFP [56](#)

- BAT [55](#)

- DAT [56](#)

- DBF [48](#)

- EDF [56](#)

- EFD [35](#)

- EFR [56](#)

- ELX [34](#), [43](#), [55](#), [56](#)

- EMF [56](#)

- EP [56](#)

- EPD [35](#), [51](#)

- EPL [56](#)

- HDR [34](#)

- LP3 [34](#)

OGL [35](#), [56](#)

OVE [56](#)

## F

Feature Set Comparison [20](#)

folder structure [21](#)

Font barcode [22](#)

Font Editor See DesignPro Font Editor

font lists

- migrating [44](#)

Font Mapping dialog [54](#)

fonts

- AFP fonts [47](#)

- DEFAULT.FAM [53](#)

- half point sizes [47](#)

- HP soft fonts [47](#)

- mapping [53](#)

- migrating, concerns [47](#)

- migrating, font lists [44](#)

- naming conventions [47](#)

- PCL [55](#)

Fonts folder [39](#)

Form Editor See also DesignPro Form Editor

FormDefs

- created in EAS [35](#)

- importing AppBuilder FormDefs in Visual  
PPFA [35](#)

- new file extension [35](#)

forms

- font lists [44](#)

- font mapping [23](#)

- migrating [42](#)

- opening [42](#)

- save as EFR [43](#)

- tags [46](#)

Forms folder [40](#)

FTP [55](#)

## G

Graphics Editor See DesignPro Graphics Editor

Graphics folder [41](#)

Grid [22](#)

guides

- related [8](#)

---

## H

HDR [34](#)

help

- context-sensitive [12](#)
- customer support [10](#)
- Elixir web site [11](#)
- online help [12](#)
- related guides [8](#)
- release notes [12](#)

highlight color [22](#), [24](#)

HP soft fonts [47](#)

## I

IBM

- AFP standards [6](#)

image formats [22](#)

images

- migrating concerns [47](#)

input parameters [24](#)

installing

- before you install checklist [14](#)
- migrating [16](#)

introduction

- DesignPro Tools [6](#)

## J

Jobs folder [42](#)

## L

legacy Elixir resources [35](#)

licensing, migrating [20](#)

Load PageDef dialog [51](#)

Loader [55](#)

LP3 [34](#)

## M

Manager See DesignPro Manager

migrating

- color palettes [47](#)
- configuration [20](#)
- custom tools [55](#)
- Desktop settings [20](#)
- directory structure [37](#)
- Dispatcher [55](#)
- fonts [44](#), [47](#)
- forms [42](#)

images [47](#)

installing [16](#)

licensing [20](#)

Loader [55](#)

profiles [37](#)

resource mapping [53](#)

resources [34](#)

setup files [20](#)

shading patterns [47](#)

Transformer [55](#)

user tools [55](#)

utilities [55](#)

workflows [31](#)

MVS hosts [53](#)

## N

native resources [34](#)

N-UP [23](#)

## O

OCA [24](#)

OGL [53](#)

Open dialog [44](#), [48](#), [54](#)

opening

- DesignPro Form Editor [25](#)

- Elixir Resource Map [53](#)

- forms [42](#)

Opus [35](#)

output parameters [24](#)

## P

page segments

- created in EAS [35](#)

- mapping [53](#)

PageDefs

- created in EAS [35](#)

- DesignPro Tools [21](#), [23](#)

- importing AppBuilder PageDefs in Visual  
PPFA [35](#)

- new file extension [35](#)

- record format support [23](#)

- template overlays [35](#)

PCL [55](#)

PCX [22](#)

PPFA

- comments [35](#)

---

PrintDriver See Elixir PrintDriver Pro  
printing

PCL [55](#)

proof [55](#)

printstream display [7](#)

Profile Selection dialog [19](#)

profiles

migrating concerns [37](#)

multiple [19](#)

selecting [19](#)

proof printing [47](#), [55](#)

PSFONT.MAP [53](#)

## R

related guides [8](#)

release notes [12](#)

resource manager [23](#)

Resource Map [53](#)

resources

advantages to using Elixir formats [35](#)

directory structure [18](#)

Elixir Application Suite [35](#)

legacy [35](#)

mapping [53](#)

migrating [34](#)

native [34](#)

source files [35](#)

Visual PPFA [35](#)

Resources window

Documents [38](#)

Fonts [39](#)

Forms [40](#)

Graphics [41](#)

Jobs [42](#)

RGB [24](#)

RTF [22](#), [23](#)

## S

Save As dialog [45](#)

saving

forms in EFR format [43](#)

Scout See Elixir Scout

setting

input parameters [24](#)

output parameters [24](#)

setup files [20](#)

shading patterns, migrating [47](#)

shortcuts [55](#)

support [10](#)

system.ini [37](#)

## T

tags [46](#)

template overlays [35](#)

terminal emulation programs [55](#)

TIF [22](#)

training [11](#)

Transformer [55](#)

TXT [22](#)

Typographic Conventions [8](#)

## U

user tools [55](#)

utilities

Dispatcher [55](#)

Elixir Application Suite [55](#)

Loader [55](#)

Transformer [55](#)

user tools [55](#)

## V

Viewer See Elixir Viewer

viewing AFPDS files [7](#)

virtual folders

Documents [38](#)

Fonts [39](#)

Forms [40](#)

Graphics [41](#)

Jobs [42](#)

Visual PPFA

importing Elixir FormDefs [35](#)

importing Elixir PageDefs [35](#)

resources [35](#)

Visual PPFA See also DesignPro Visual PPFA

VM [53](#)

## W

workflows

creating a form [31](#)

editing a form [33](#)