

Xerox CX Print Server, Powered by Creo, for Xerox 700 Digital Color Press

Version 1.5, Service Pack 1

Overview

Welcome to the Xerox CX print server 1.5 Service Pack 1 software release notes. This document describes:

- Installing Service Pack 1

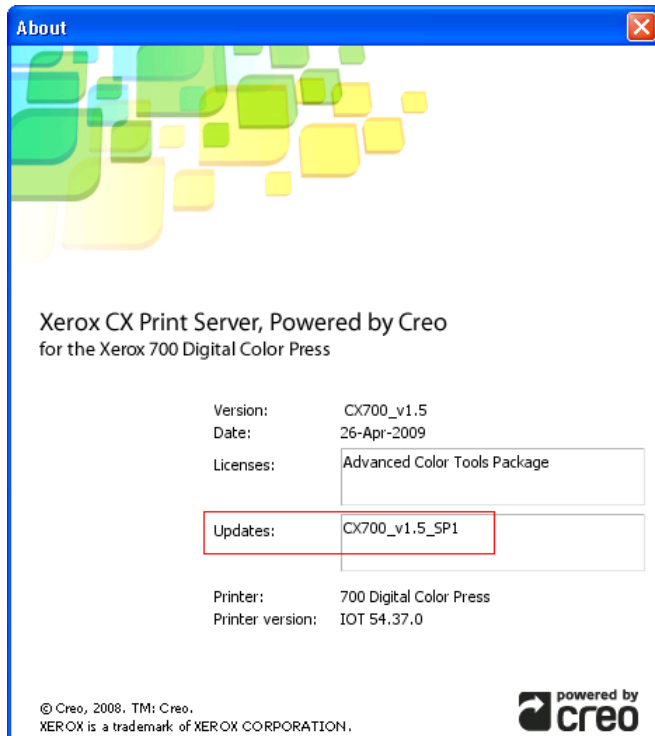
Service Pack 1 also includes:

- Fixed SPARs

Installing Service Pack 1

1. Disable any anti-virus software currently running on the CX print server.
2. Exit the CX print server software, and verify that the CX print server icon no longer appears in the launch bar in the system tray.
3. Insert the CX700_V1.5_SP1 CD into the CD/DVD drive or download the service pack from Xerox.com.
4. Double-click the Zip file to extract the service pack files.
5. Locate and double-click the **Setup.exe** file.
6. When the message for uninstalling the **ColorServerGUI** appears, click **Yes** and follow the instructions to complete the installation procedure.
7. When the installation is complete, click **Yes, I want to restart my computer now**, and click **Finish**.
8. As soon as the CX print server restarts, enable the anti-virus software.

9. From the **Help** menu, select **About**, and under **Updates** verify that the SP1 software was installed.

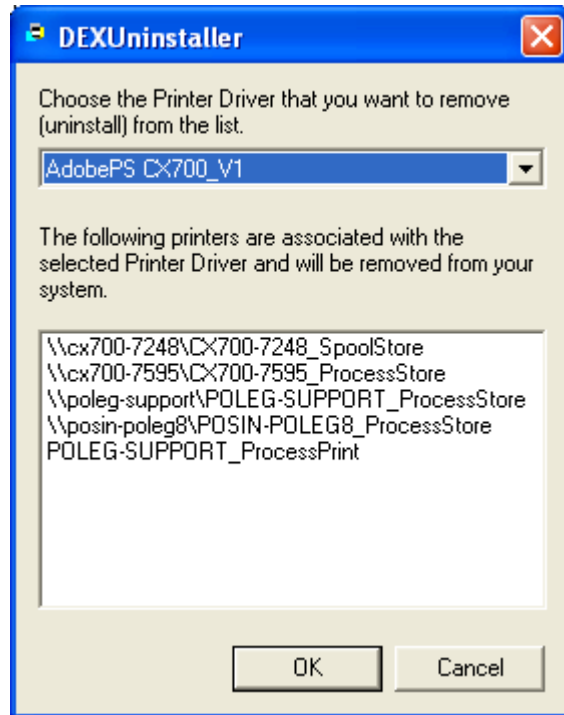


Note: You can also verify the software version information on a printed test page.

After you install Service Pack1, perform the following steps on your Windows-based computer:

1. Exit all software that is open.
2. On your desktop, click **Start > Run**, and in the **Open** box, type \\{Server Name}\\Utilities\\PC Utilities\\Driver Extension.
3. Double-click the **DEXUninstaller.exe** file.

4. Choose **AdobePS CX700_V1** and Click **OK**.



Release Notes



Fixed SPARs

This section lists the SPARs that are resolved in the CX print server 1.5 SP 1 software.

SPAR#	Summary
580820628	Cannot print from tray 5.
757603821	Graphic elements are lost in imposition.
698204363	Gradation is not applied to the whole page.
237433111	Custom size paper asks for incorrect paper, or causes a 45-360 fault.
051847179	Manual duplex wizard causes a fault with coated 300 gsm stock.
741753111	Unable to change a job name in CX700 Spire GUI.
164756456	Highlighting in Merge Jobs "RTP Jobs" does not exist in the CX700.
119867586	Virtual printer queues deleted.
092897486	RIPnt error after preview.
732754413	B&W job shows color clicks with VP set as Creo Grayscale.
742044911	Cannot select HCS when the Enhanced Driver Interface is off.
136624646	When printing .vps files from XMpie with finishing options, the throughput productivity slows down.
337188567	Finisher booklet settings of virtual queues not applied to jobs.
108902280	Blank page issue with odd # pages when saving 2up imposition and face up printing.
449360839	Zero file size issue when scanning format is TIFF or JPEG.
129263980	On IOT with a High Capacity Stacker, when offset per set or slip sheets are selected in CX700, the sample set button does not work.
643256091	Imposition options are not visible in the Danish language.

Release Notes



SPAR#	Summary
185709894	The sample file, Altona.pdf, displays differently in overprint preview than when it is printed.
537043702	The French language mode, on the Creo server, always adds the number '6' in the quantity field.
060152425	Slow down in RIPping with imposed mailing file.
032169573	Set integrity issues after a paper jam occurrence.
498341386	Virtual printers disappear when certain jobs are printed.
500851944	Fold booklets without stapling does not work. The output is sent to the top tray, and not the booklet maker tray.
147986668	Tabs jamming/ fault 077-909 after upgrading to v1.5 CREO software.
128620472	Creo allows 300 gsm auto duplex.
509105711	Cannot produce calibration chart when machine finisher's configuration is with OCT.
270077895	Unable to re-print jobs from tray 5 when Creo Spire is configured for French

About Print On-Demand Solutions Group

The Print On-Demand Solutions Group develops and supports high-performance CREO Color Servers and key workflow solutions for a range of digital production printers and presses. It also develops advanced on-demand applications to enable the creation of personalized direct mail, targeted catalogs and other powerful one-to-one marketing communications tools.

This independent unit of Kodak's Graphic Communications Group will continue to help its customers leverage their investment in digital printing.

For more information about CREO Color Servers, visit www.creoservers.com

(c) Kodak, 2010. All rights reserved. Creo is a trademark of Eastman Kodak Company. Adobe, Acrobat, Adobe Illustrator, Distiller, Photoshop, PostScript, and PageMaker are trademarks of Adobe Systems Incorporated. Apple, AppleShare, AppleTalk, iMac, ImageWriter, LaserWriter, Mac OS, Power Macintosh, and TrueType are registered trademarks of Apple Computer, Inc. Macintosh is a trademark of Apple Computer, Inc., registered in the U.S.A. and other countries. PANTONE, Hexachrome, PANTONE Goe, PANTONE Hexachrome, and PANTONE MATCHING SYSTEM are the property of Pantone, Inc. PEARL, PEARLsetter, PEARLhdp, PEARLdry, and PEARLgold are registered trademarks of Presstek, Inc. Technical data subject to change without notice.