

Customer Release Notes - README

Xerox Versalink Products

Release Version xx.31.81

RELEASE DATE JULY 20TH 2018

Software Release Details:

Product Model	System Software	Controller ROM
Xerox® VersaLink® B400	37.31.81	1.40.6
Xerox® VersaLink® B405	38.31.81	1.40.6
Xerox® VersaLink® C400	67.31.81	1.40.6
Xerox® VersaLink® C405	68.31.81	1.40.6
Xerox® VersaLink® B7025/30/35	58.31.81	1.40.6
Xerox® VersaLink® C7000	56.31.81	1.40.6
Xerox® VersaLink® C7020/25/30	57.31.81	1.40.6
Xerox® Phaser® 6510	64.31.81	1.40.6
Xerox® WorkCentre® 6515	65.31.81	1.40.6

Contents

Product Firmware Release xx.31.81	4
1. USB SCANNING ADDED TO VERSALINK – A4 MFP MODELS ONLY	4
2. WPA2 - KRACK VULNERABILITY ADDRESSED	4
3. BLUE ANGEL SUPPORT HAS BEEN ADDED TO POWER SAVER MODE	4
4. XML FORMAT NOW AVAILABLE WHEN DOWNLOADING CONFIGURATION REPORT	4
CAVEAT: USB MAY NOT BE RECOGNIZED ON WIN7.X/8.X AFTER UPGRADE	4
Product Firmware Release xx.23.21	5
1. PASSWORD FIELD MISSING WHEN SETTING UP SMB SCANNING	5
2. UNABLE TO USE \$ CHARACTER WPA2 PASSPHRASE	5
3. PRINTING CUSTOM SIZE ON CARDSTOCK PROMPTS FOR DIFFERENT SIZE IN BYPASS	5
4. LDAP AUTHORIZATION GROUP PERMISSIONS NOT WORKING PROPERLY	5
Product Firmware Release xx.21.61	5
1. FAULT 116-313 AFTER UPGRADING TO XX.21.41 OR XX.21.51	5
Product Firmware Release xx.21.51	6
1. @PRINTBYXEROX APP	6
2. FAX CONFIRMATION SHEET PRINTS IN BLACK ONLY	6
3. XEROX DROP BOX APP BLANK SCREEN	6
4. SLOW PRINTING ON MAC OSX WITH BI-DI IS ENABLED	6
Product Firmware Release xx.21.41	6
1. THINPRINT	6
2. AUTO-POPULATE THE REALM ON WALK-UP UI	8
3. ELIMINATE THUMBNAIL ON FAX CONFIRMATION SHEET	9
4. REMOVE EMBEDDED WEB SERVER SUPPORT FOR 3DES CIPHER SUITE (SWEET32)	9
5. DEFAULT OUTPUT TRAY SETTING FOR COPY JOB	9
6. ONE-TOUCH FEATURE ENHANCEMENT	10
7. PERSONAL FAVORITES	10
8. SNMPV3 FIPS 140-2 MODE SUPPORT	11
9. SIMULTANEOUS HTTP AND HTTPS SUPPORT	11

Product Model	System Software	Controller ROM
Xerox® VersaLink® B400	37.31.81	1.40.6
Xerox® VersaLink® B405	38.31.81	1.40.6
Xerox® VersaLink® C400	67.31.81	1.40.6
Xerox® VersaLink® C405	68.31.81	1.40.6
Xerox® VersaLink® B7025/30/35	58.31.81	1.40.6
Xerox® VersaLink® C7000	56.31.81	1.40.6
Xerox® VersaLink® C7020/25/30	57.31.81	1.40.6
Xerox® Phaser® 6510	64.31.81	1.40.6
Xerox® WorkCentre® 6515	65.31.81	1.40.6

Product Firmware Release xx.31.81

1. USB Scanning added to Versalink – A4 MFP Models Only

This change allows users the ability to scan directly to a PC or Mac when connected to the device via USB cable. It requires the new scan drivers that are currently available here:

[Windows Scan driver](#)

[Mac Scan Driver](#)

2. WPA2 - KRACK Vulnerability Addressed

The serious weaknesses in WPA2-supplement, a protocol that secures all modern protected Wi-Fi networks, has been identified and fixed in this release. No longer can an attacker exploit these weaknesses using key reinstallation attacks (KRACKs) to the Xerox Printers.

3. Blue Angel Support has been added to Power Saver Mode

Based in Germany, Blue Angel was the first environmental-related label for products and services in the world. Since 1978 it has helped promote ecological awareness and guide consumers to the most ecologically sound products. In order to achieve Blue Angel, devices must meet stringent requirements for air emissions, materials selection, recyclable design, and energy consumption.

4. XML format now available when downloading Configuration Report

Administrators now have the availability to download the device configuration report in XML format. To enable this feature, it is located on the WEBUI under Home → Download Configuration Report.

NOTE: XML Notepad can be used to view the XML Configuration Report. A direct Microsoft download link is available here: <https://www.microsoft.com/en-us/download/confirmation.aspx?id=7973>

Caveat: USB may not be recognized on Win7.x/8.x after upgrade

A device connected to a PC running Windows 7 or 8 with a USB cable may experience an issue of the device not being recognized by the PC. This issue is not expected to occur on PCs running Windows 10.

After upgrading to the release, the PC may need to update the USB driver and reassign it to the USB Composite Device driver.

Customers may check if this issue is being seen on their Windows7.x/8.x workstations by following these steps:

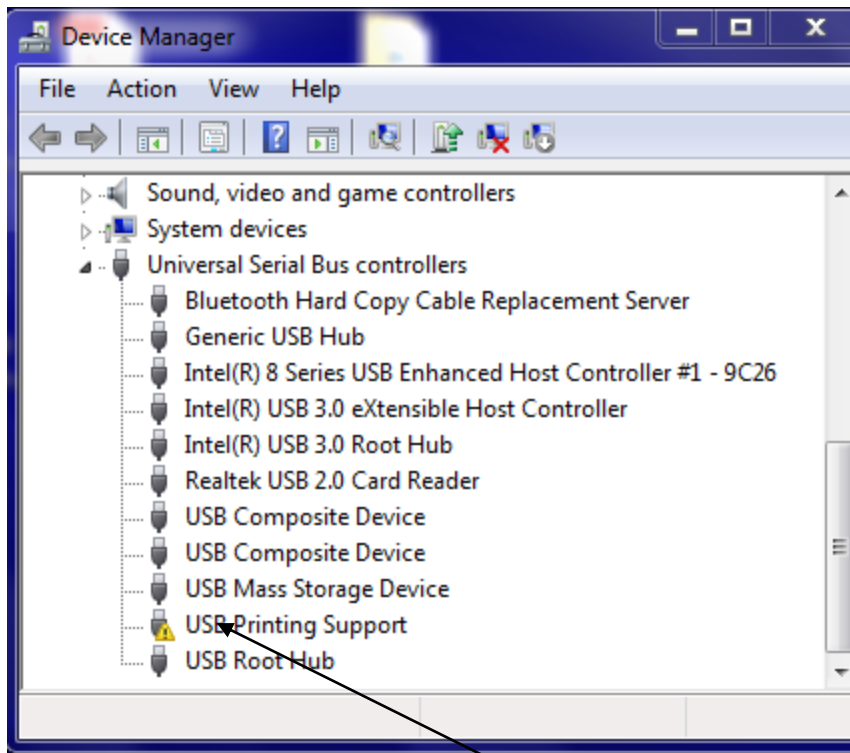
1. Open [Control Panel] on the Windows 7.x/8.x Workstation
2. Customers can determine if their PC has this issue by checking the Universal Serial Bus controllers section of Device Manager
3. Depending on your version of Windows, Control Panel is usually available from the [Start Menu] or [Apps] Screen. Otherwise, follow the notes below depending upon the operating system used.

Note #1: Windows 8.x → In Windows 8, tap or click on the **Hardware and Sound** link. You could also jump right to Device Manager through the Power User Menu and not have to go through Control Panel.

Note #2: Windows 7.x → In Windows 7, look under [System]

4. Select the **[Hardware]** tab, and then click the **[Device Manager]** button.
With Device Manager now open, you can now view the list and select [Universal Serial Bus controllers] to identify if the problem is being seen on the Windows Workstation.

Please reference sheet shot below:



Note: Customers who have a **Yellow Warning!** next to the USB Printing Support will need to Right Click on the USB Printing Support line and select Update Driver Software.

Product Firmware Release xx.23.21

1. Password field missing when setting up SMB scanning

This release has corrected the malfunction of not allowing end users to enter a password. The password box has been re-implemented for scanning.

2. Unable to use \$ Character WPA2 Passphrase

A change has been made that will now give end users the ability to enter the special character "\$" when setting WIFI WPA2 passphrase.

3. Printing custom size on cardstock prompts for different size in Bypass

This release has corrected the malfunction of requesting incorrect orientation/size in the bypass tray.

4. LDAP Authorization Group permissions not working properly

This release has corrected the malfunction where when using LDAP Authorization Group Permissions where VersaLink models will fail to apply group-based restrictions when the user belongs to a group structure of 5 nested groups and the group names also contained parentheses. Please Note: VersaLink products only support the max of five (5) nested groups

Product Firmware Release xx.21.61

1. Fault 116-313 after upgrading to xx.21.41 or xx.21.51.

When upgrading to either xx.21.41 or xx.21.51 the machine might display fault 116-313. Release xx.21.61 fixes the issue and will be deployed on Xerox.com for the models listed in the table above during the month of March 2018

Product Firmware Release xx.21.51

1. @PrintByXerox App

Use the new Xerox® @PrintByXerox App to print email attachments and documents sent from mobile devices. Simple email-based printing is available without a license and without the need to create any Mobile Print Cloud account as long as the MFP or Printer has access to the internet. Full documentation is located here: <http://www.support.xerox.com/support/xerox-app-gallery/documentation/enus.html>

2. Fax Confirmation Sheet Prints in Black only

On our color devices, fax confirmation sheets will be printed in black only with this software release installed.

3. Xerox Drop Box App Blank Screen

This software release corrects a malfunction when initiating the Xerox Dropbox App.

4. Slow printing on Mac OSX with Bi-Di is enabled

This release improves performance of printing via Mac OSX with bi-Directional support is enabled for the device. Product Firmware Release xx.21.41

Product Firmware Release xx.21.41

1. ThinPrint

ThinPrint is a Third Party solution that saves network bandwidth by allowing print data to be compressed at the server and decompressed at the Print device before being printed out on a printer. The ThinPrint solution also supports print data encryption prior to sending to the print device. Xerox has added the ability to accept this compressed (and encrypted if configured) print data, process the Thin Print data, and print.

Note: Xerox devices must be equipped with a hard drive or solid-state drive to utilize the ThinPrint feature.

ThinPrint WebUI



Once the ThinPrint Protocol is enabled, the Admin has access to the settings below. The port must be enabled. The default port number for ThinPrint communication is 4000.

Note: Although a different port number can be configured. It is important not enter a port number that is already in use.

ThinPrint

Port

✓

|||

Port Number

1–65535

4000

TBCP Filter

|||

Connection Timeout

1–65,535 Seconds

300

Packet Size

200–64,000 Bytes

64000

AutoConnect

Printer Class

versali

Cancel

OK

ThinPrint requires a certificate to be loaded on the device when running with TLS encryption. This is located in System Security SSL/TLS Settings

Note: The ThinPrint Engine/Server output queue and the Xerox device ThinPrint settings must both be set to TLS encryption for print jobs to be encrypted (see more below).

ThinPrint Server Settings

Properties of ThinPort: on TP

Configure

Advanced

Job Statistics

Port name:

ThinPort:

☒ Use encryption

Bandwidth control

☐ Enable

Bandwidth (kbit/s (kbps)):

826

min

max

☒ TCP/IP (sockets)

TCP port:

4000

☐ Virtual Channel Protocol (ICA or RDP)

☐ Use Virtual Channel Gateway

☐ LPD

☐ Minimum print data volume

LPD configuration

Printer queue:

lp

LPD decompression filter:

☒ No data compression

OK

Cancel

Apply

ThinPrint Device Settings

SSL/TLS Settings

☒ TLS 1.0
 ☒ TLS 1.1
 ☒ TLS 1.2

Select at least one protocol.

Device Certificate - Server
 CN=XC-60EB8B

HTTP - SSL/TLS Communication
 ☒

HTTP - SSL/TLS Port Number
 1-65535
 443

LDAP - SSL/TLS Communication
 ☒

SMTP - SSL/TLS Communication
 SSL/TLS

ThinPrint - SSL/TLS Communication
 ☒

Device Certificate - Client
 CN=tp.cactest.lab,O=Xerox,L=Rochester,ST=NY,C=US

Verify Remote Server Certificate
 ☐

Cancel

OK

Caveats:

- Unencrypted print jobs from the server will not be accepted by ThinPrint protocol when TLS encryption is enabled on the print device.
- Cloning of the ThinPrint settings is not supported.
- Use of MIBS / OID string commands for ThinPrint settings is not supported.
- Audit Logging of the ThinPrint enablement / configuration is not supported.
- Thin Print may require the use of TLS 1.0 for encrypted job communication.
- Not applicable to Xerox® Phaser® 6510, Xerox® WorkCentre® 6515

2. Auto-populate the realm on walk-up UI

This release will automatically populate the default realm for walk-up users authenticating with Kerberos or SMB, allowing other pre-configured realms to be selected from a menu on the local user interface. The preconfigured menu will hold up to 50 Kerberos realm names or 5 SMB realm names which can be populated through the Authentication setup menu in the Embedded Web Server.

Note: An error message will appear on the walk-up UI if a user enters their fully qualified (username@realm) instead of just their username.

Not applicable to Xerox® Phaser® 6510, Xerox® WorkCentre® 6515

3. Eliminate thumbnail on fax confirmation sheet

The key codes below provide the ability to turn on/off the fax image that is printed on the fax confirmation sheet. The fax image is printed on the confirmation sheet by default. When the “Enablement Key” is applied, the faxed image will be suppressed. The “Disablement Key” will restore the default condition, displaying the fax image.

Feature Key Instructions:

1. On the device’s Embedded Web Server select System-> Security-> Feature Enablement
2. Enter correct enable/disable code (include the * character)

The Feature keys are as follows:

Product Model	Enablement Key	Disablement Key
Xerox® VersaLink® B405	*3002333081	*3002333080
Xerox® VersaLink® C405	*3003333081	*3003333080
Xerox® VersaLink® B7025/30/35	*3014333081	*3014333080
Xerox® VersaLink® C7020/25/30/35	*3014333081	*3014333080
Xerox® WorkCentre® 6515	*3005333081	*3005333080

4. Remove embedded web server support for 3DES cipher suite (Sweet32)

Sweet32 is the name of an attack that takes advantage of design weaknesses in a cipher known as 3DES, or Triple-DES. Fortunately, successfully carrying out the TLS variant of the Sweet32 attack requires a very particular set of capabilities on the part of the attacker. The attacker needs to keep the victim on the web page for days, in order to execute a practical attack; researchers found that up to 785 GB of data transfer is required. Xerox has removed this cipher from the web server components of these products, removing the possibility of an attack via the embedded web interface.

5. Default output tray setting for copy job

This feature addresses an issue for devices with the optional Office Finisher LX installed. Copy jobs without finishing options selected were limited to output the job to the Center Output Tray where offsetting cannot be performed. A new Admin accessible setting is available on the Embedded Web Server (EWS) to default copy job output to the finisher tray. This provides the ability to offset the sets with or without finishing options selected.

To change the setting:

Open EWS of the device and log in as admin.

Select Apps > Copy

Select General Settings and Policies

Select Output Destination

Selections are “Center Output Tray” (default) or “Right-Side Output Tray” (finisher).

Figure 1: Output Destination shown when optional **Office Finisher LX** is installed.

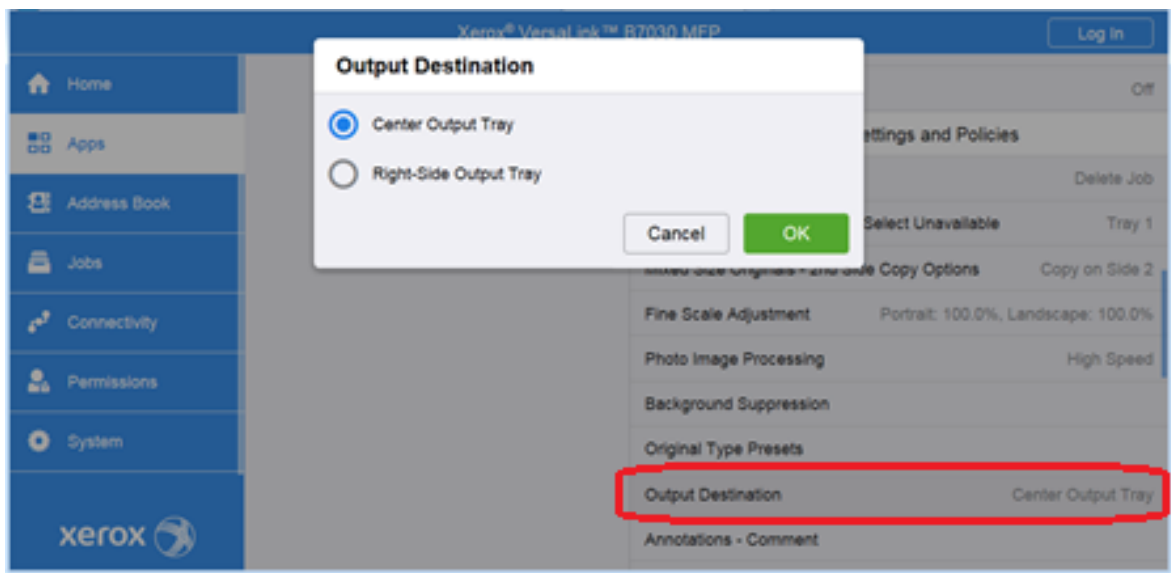
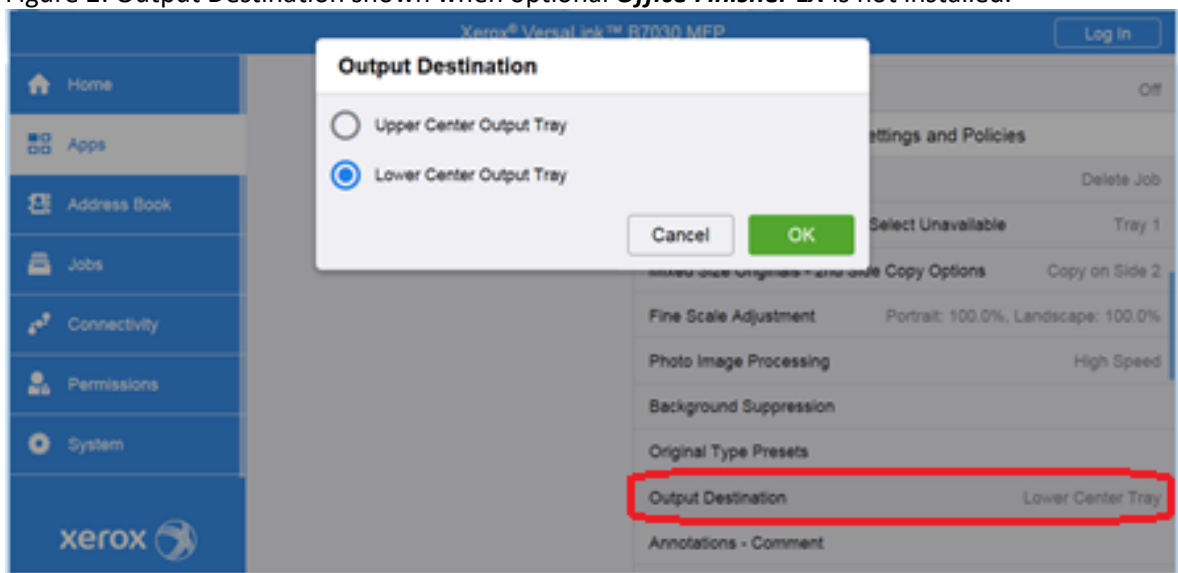


Figure 2: Output Destination shown when optional **Office Finisher LX** is not installed.



Not applicable to Xerox® Phaser® 6510, Xerox® WorkCentre® 6515

6. One-Touch Feature Enhancement

This update expands the capabilities of One Touch features, allowing users to create, edit, and share one-touch “apps” that save and simplify complicated or lengthy workflows that customers may need to do frequently. Once created this app will appear and behave similarly to native device apps and functions. Creation of one-touch apps is simple, with a new option presented within app menus that allow for settings and control for a function to be saved. Once saved, the new one-touch app appears at the LUI like other native functions, and can be edited later if desired. One-touch apps can be shown for all users, user groups, or just the creator of the one touch app. This app can be cloned and shared, and supports personalization and customization.

Not applicable to Xerox® Phaser® 6510, Xerox® WorkCentre® 6515

7. Personal Favorites

This update adds enhancements to the personalization and customization functions that allow users to customize and save individual application settings and contacts to individual user accounts. This allows users to streamline

and customize their user experience by saving frequently used options, hiding unused features and functions, and providing an overall more efficient streamlined user experience. Frequently used contacts and destinations can be prioritized and saved, specific to the individual user. With the addition of one touches, and the already present UI customization and personalization options, this provides a best in class user experience for these devices. Not applicable to Xerox® Phaser® 6510, Xerox® WorkCentre® 6515

8. SNMPv3 FIPS 140-2 mode support

FIPS 140-2 approved security protocols have been added to SNMPv3 enabling its use in FIPS 140-2 mode without an exception. This enhancement provides an overall improvement to device security and management compatibility within secure environments.

Not applicable to Xerox® Phaser® 6510, Xerox® WorkCentre® 6515

9. Simultaneous HTTP and HTTPS Support

HTTPS connectivity is now available, using default, self signed certificates without a user having to enable and configure HTTPS, similar to operation of AtlaLink devices. This will allow HTTPS connections, as well as services and functions that depend on and require HTTPS functionality to work seamlessly without the extra step of enabling HTTPS and configuring certificates. Devices will still have the ability to enforce HTTPS ONLY connections by disabling insecure HTTP.

© 2018 Xerox Corporation. All rights reserved. Xerox® and Xerox and Design® and VersaLink® are trademarks of Xerox Corporation in the United States and/or other countries. BR22773
Other company trademarks are also acknowledged.
Document Version: 1.0 (January 2017).

