

Help file for Xerox Scanner Driver

Requirement

The “Xerox Phaser 3100 MFP” software must be installed.

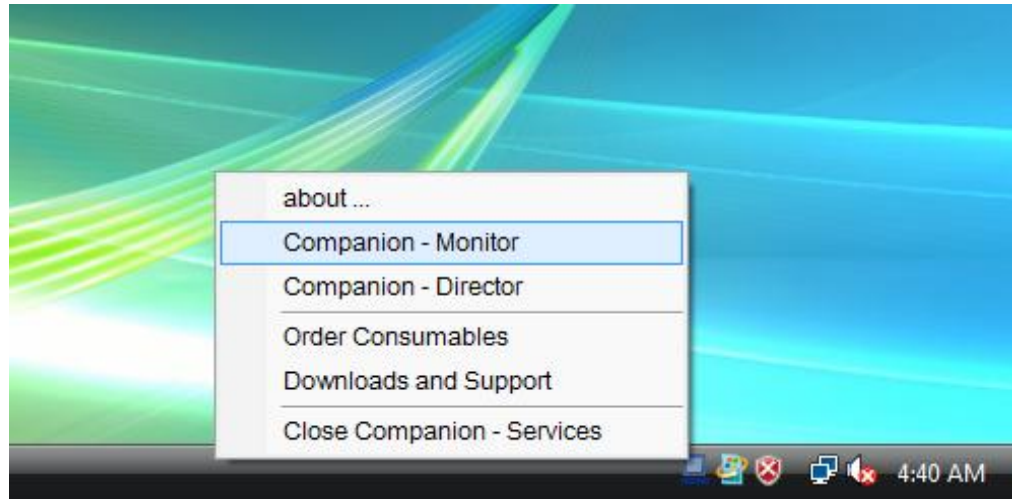
Instructions to follow for this package

If you have installed applications and drivers

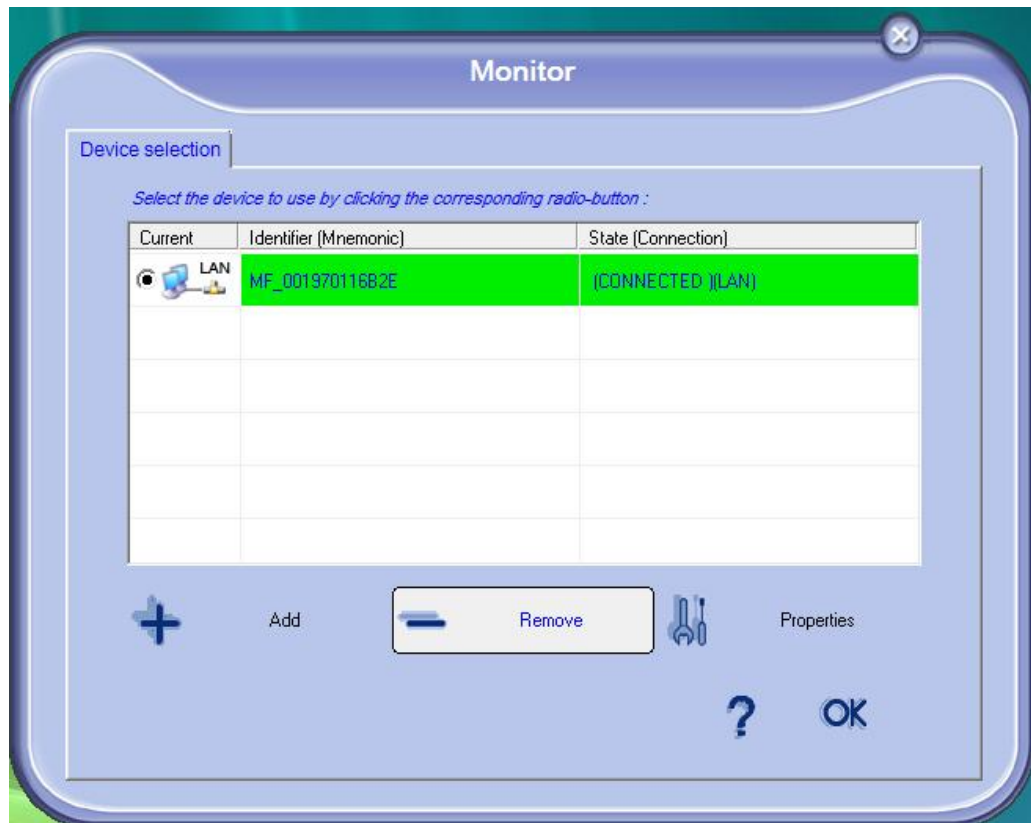
1. Disconnect USB devices.
2. Right click on “Xerox Companion - Monitor” icon in the right bottom to the screen.



3. In the menu, click on “Companion - Monitor”.



4. If you have LAN devices installed in the Monitor dialog, you must delete them.



5. Run the file “XeroxScannerDriver.exe” and follow instructions on the PC.

If you have installed drivers only and you have already installed printers and scanners, you must in this case:

1. Run the file “XeroxScannerDriver.exe” and follow instructions on the PC.
2. Add your LAN devices from the “Install a network or wireless printer and scanner” shortcut (Start Menu -> Programs -> Xerox Companion Suite -> PHASER 3100 MFP)

