

# Replacing the Xerox Mobile Express Driver with the Xerox Global Print Driver

© 2019 Xerox Corporation. All rights reserved. Xerox®, AltaLink®, ConnectKey®, Global Print Driver®, VersaLink® and WorkCentre® are trademarks of Xerox Corporation in the United States and/or other countries. BR27742

Other company trademarks are also acknowledged.

Document Version: 1.0 (November, 2019).

## Replacing the Xerox Mobile Express Driver with the Xerox Global Print Driver

While Xerox will not release new versions of the Mobile Express Driver that support new products, you are welcome to continue to use the current Mobile Express Driver as long as you like. It is not necessary to remove the Xerox Mobile Express Driver.

You can use the Xerox Global Print Driver to print to new Xerox printers and keep using the Mobile Express Driver to print to existing printers should you wish.

The easiest way to create printers with the Global Print Driver is with the Xerox Smart Start installer. It scans the network looking for printers in a similar way as the Mobile Express Driver. If the Smart Start does not support a printer, then users need to create a Windows printer with the printer installation wizard.

This guide will detail how to install printers using Smart Start and how to install them manually. It also contains a section on how to remove the Mobile Express Driver, in case you do wish to remove it at some point.

### Xerox Smart Start

Smart Start is the latest print driver installer from Xerox. It will scan your network looking for supported printers and present them to the user. When users select the printer, they want to install Smart Start. It presents them with a list of print driver options and installs automatically.

Follow this [link](#) and accept to the End User Licensing Agreement (EULA) to download Smart Start.

#### XEROX PRINTERS SUPPORTED BY SMART START V1.2.23.0

Supported Products	
Xerox® WorkCentre® 7830/7835/7845/7855*	Xerox® AltaLink® B8045/B8055/B8065/B8075/B8090
Xerox® WorkCentre 7830i/7835i/7845i/7855i*	Xerox AltaLink C8030/C8035/C8045/C8055/C8070
Xerox® WorkCentre 7970/7970i*	Xerox® B1022/B1025 Multifunction Printer
Xerox® WorkCentre 7220/7225*	Xerox® Phaser® 6510, Xerox WorkCentre 6515
Xerox® WorkCentre 7220i/7225i*	Xerox® VersaLink® B400/B405
Xerox® WorkCentre 5845/5855/5865/5875/5890*	Xerox® VersaLink B600/B605/B610/B615
Xerox® WorkCentre 5865i/5875i/5890i*	Xerox® VersaLink B7025/7030/7035
Xerox® WorkCentre 5945/5955*/5955i*	Xerox® VersaLink C400/C405
Xerox® WorkCentre 6655/6655i*	Xerox® VersaLink C500/C505/C600/C605
Xerox® WorkCentre 3655S/3655X/3655i*	Xerox® VersaLink C7020/C7025/C7030/C7000
	Xerox® VersaLink C8000/C900

\* Xerox Smart Start cannot install scan drivers for these products. Please go to [www.support.xerox.com](http://www.support.xerox.com) and download a separate scan driver for your product.

## Xerox Smart Start Instructions to Install New GPD Drivers

1. Launch XeroxSmartStart.exe – this requires elevation to an administrator account.
2. Agree to the End User Licensing Agreement (EULA).
3. Xerox Smart Start will scan for printers.
4. If Smart Start discovers the printer you want to install select **Advanced Install**. Do not select Quick Install.
5. If Xerox Smart Start did not find the printer you want to install select **Don't See Your Printer**.
  - a. Enter the Printer's DNS name or IP address in the network address field and select **Connect**.
6. Smart Start will display the **below list of driver install options**:

### Print System

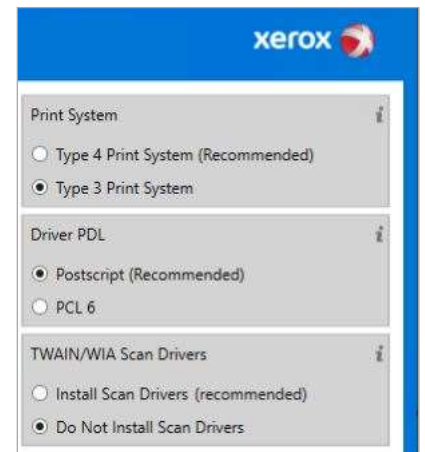
- Users have the option of selecting either the **Type 3** or **Type 4 Print System**.
- Smart Start will recommend Type 4 for Windows 10, but Xerox recommends the **Type 3 Print System** for all your printer installations. Select **Type 3 Print System** as shown.

### Driver PDL

- Users have the option of selecting either **PostScript** or **PCL6**.
- Smart Start will recommend different PDLs depending on the type of printer selected. The Mobile Express Driver used PostScript only. Xerox recommends selecting the default PDL but if you would like to only support Postscript in your environment, you are welcome to do so.

### Scan Driver Options

- The scan driver is optional.
  - Scan drivers are used to scan images from MFPs and transfer the images to the user's desktop over the network.
  - Unless users have a need to scan documents directly to their desktop Xerox recommends **Do Not Install Scan Drivers**.
7. When ready select **Install**.
  8. Smart Start will automatically download the V3 Global Print Driver and create a Windows printer.
  9. You can now choose to exit Smart Start or install another printer.



## Manual Printer Installation Instructions

This section will detail how to create Windows printers with the Global Print Driver without using Smart Start.

### DOWNLOAD THE XEROX GLOBAL PRINT DRIVER

First, we need to download the Global Print Driver from [Xerox.com](https://www.xerox.com).

1. Open <https://www.support.xerox.com>
2. Type **"Global print driver"** in the search field.
3. Select the **Global Print Drivers & Downloads** link.

4. The Mobile Express Driver uses PostScript so choose the **V3 Xerox Global Print Driver PostScript**.
5. Accept the EULA to download the Global Print Driver.
6. Extract the .zip file to your desktop.

### OPEN THE MOBILE EXPRESS DRIVER'S PRINTER LIST

To help us create printers with the Global Print Driver we are going to open the Mobile Express Driver's printer list.

1. Start **Notepad.exe**
2. Select **File, Print**
3. Choose the **Xerox Mobile Express printer** then select **Preferences**.
4. This will launch Mobile Express printer's Mobile Printing dialog.

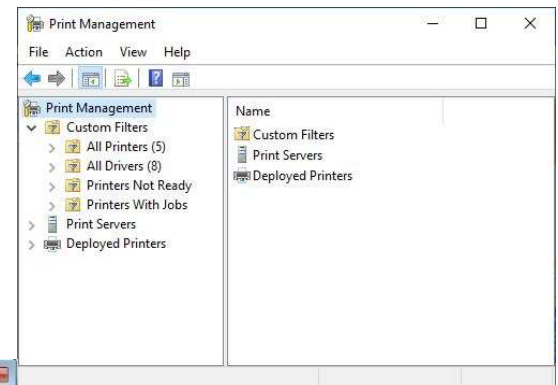
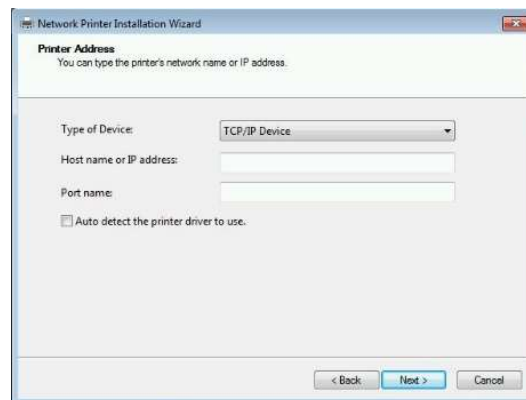
The Mobile Printing dialog will contain a list of all the printers you have printed to. You can sort the list with the view button. The IP address, DNS name, and location for each printer will be displayed in the list. We are going to leave this window open and use this information to create Standard TCP/IP ports for the Xerox Global Print Driver.

### CREATE PRINTERS WITH PRINT MANAGEMENT

Xerox recommends using the Print Management utility to create printers with the Xerox Global Print Driver. This is faster than using the wizard in Control Panel, especially if you want to create multiple printers.

1. Select **Start** then type "Print Management".
2. Windows should find the Print Management utility. Select the program's icon to open it.
3. In Print Management expand **Print Servers**.

4. Right-click on the (local)
5. This will
6. In the **Services**
7. In the **Type of printer**
8. Use the IP printers in fill in the When



print server and select **Add Printer**. launch the printer installation wizard. wizard choose **Add a TCP/IP or Web Printer by IP address or hostname** next screen choose **TCP/IP Device** for Device and uncheck **Auto detect the driver to use**. Select **Next**. address or DNS name from one of the the Mobile Express Driver's printer list to Host name or IP address in this screen. ready select **Next**.

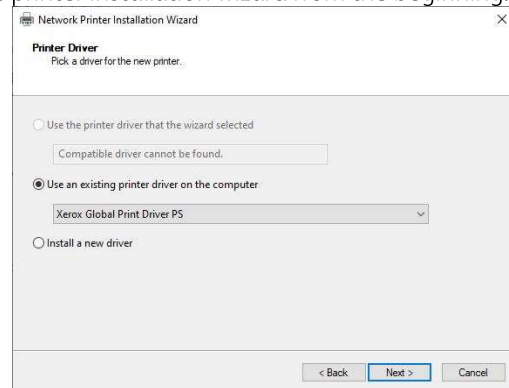
9. In the next screen choose **Install a new driver**.
10. In the next screen select **Have Disk**, then select **Browse**.
11. Browse to the folder containing the extracted Global Print Driver. You are looking for the file **"x3UNIVP.inf"**.
12. Select **x3UNIVP.inf** then select **Open**.
13. Select **OK**. The printer installation wizard will ask you to choose a Global Print Driver model:
  - a. Xerox Global Print Driver PS
  - b. Xerox GPD PS V5.675.6

It does not matter which model you choose. Both models are functionally the same. The versioned model allows for different versions of the Global Print Driver to coexist on the same PC.

14. In the next screen enter a name for the printer and uncheck **Share this printer**.
  - a. You need to be an administrator in order to share a printer. If you are not an administrator and you leave **Share this printer** checked the printer installation will fail.
15. In the next screen select **Next** to create the printer. Installing a new print driver requires elevation to an administrator account.

There is an **Add another printer** checkbox on the last screen of the printer installation wizard. Check it if you wish to add additional printers. This will restart the printer installation wizard from the beginning. Choose a new printer from the Mobile Express Driver's list and enter its IP or DNS name into the wizard.

You do not need to reinstall the Global Print Driver when you create the next printer. The printer installation wizard remembers the previous print



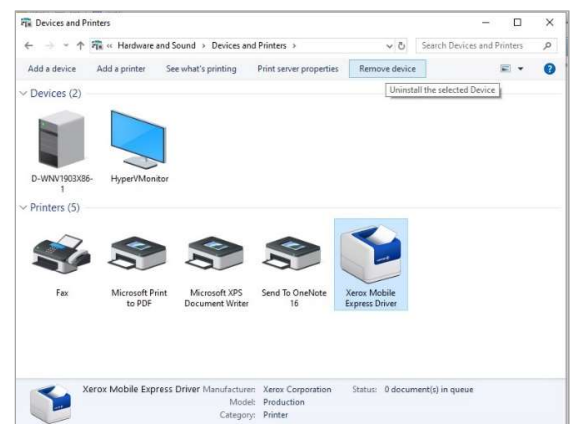
printer  
Driver  
drivers

you have installed. In the printer installation wizard choose **Use an existing printer driver on the computer**.

## How to Remove the Xerox Mobile Express Printer and Driver

When you have created all your printers with the Global Print Driver, you can remove the Xerox Mobile Express printer if you wish.

1. Close Notepad and any other program used for printing such as Word or Adobe Reader.
2. Open Control Panel.
3. In Control Panel select **View Devices and Printers** under Hardware and Sound.
4. Select the Xerox Mobile Express Driver then select **Remove Device**. This requires elevation to an administrator account.



Now we need to remove the Mobile Express Driver.

1. Select any printer in **Devices and Printers** then select **Print Server Properties**.
2. In Print Server Properties select the **Drivers** tab.
3. Select the **Change Driver Settings** button. This requires elevation to an Administrator account.
4. Select the Xerox Mobile Express Driver and choose **Remove**.
5. Windows will prompt to remove the driver only or the driver and driver package. Choose to **remove the driver and driver package**. Then select **OK**.
6. Select **Delete** to finish deleting the print driver.

