

# XEROX INTERFACE MODULE<sup>B1</sup>



## OPERATOR MANUAL

Initial issue: 02/03  
Latest revision: 10/03  
**9.133702**

This page is intentionally left blank.

## TABLE OF CONTENTS

---

<b>INTRODUCTION</b> .....	<b>.5</b>
<b>DESCRIPTION OF THE PROCESS</b> .....	<b>.6</b>
<b>DESCRIPTION OF THE MACHINE</b> .....	<b>.7</b>
1 - Features description .....	.7
2 - Technical specifications .....	.8
<b>JAM DETECTION</b> .....	<b>.10</b>
<b>HOW TO PROGRAM A JOB (ROTATION OR REGISTRATION)?</b> ...	<b>.11</b>
<b>JAM CLEARANCE - JOB RECOVERY</b> .....	<b>.12</b>
<b>TROUBLESHOOTING</b> .....	<b>.13</b>

This page is intentionally left blank.

## INTRODUCTION

---

This manual provides informations for operating the **Xerox Interface Module**.

Welcome to the **Xerox Interface Module**. This product is an interface for the DocuTech 120 printer.

The XIM will enable in line finishing by receiving sheets from the host printer and sending these sheets in to a stacker or other Finishing device.

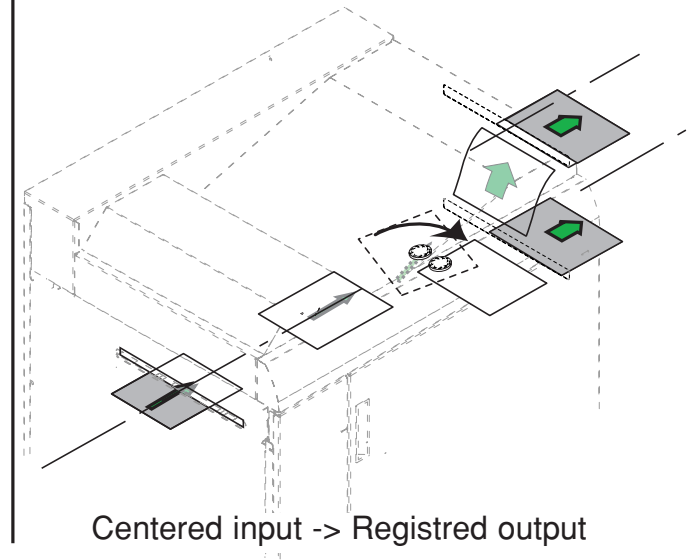
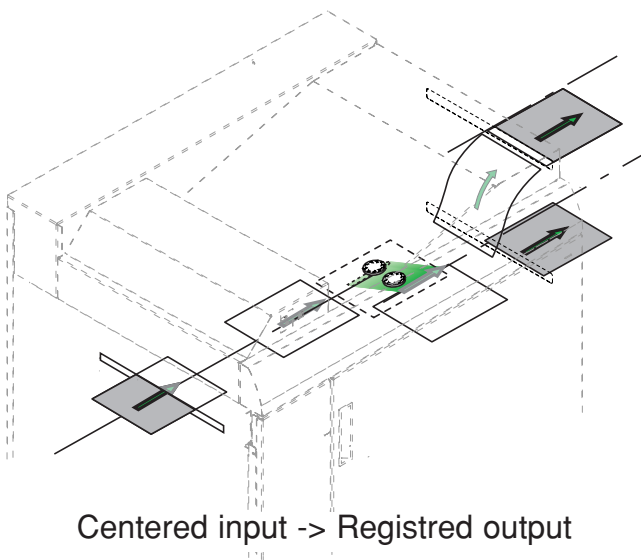
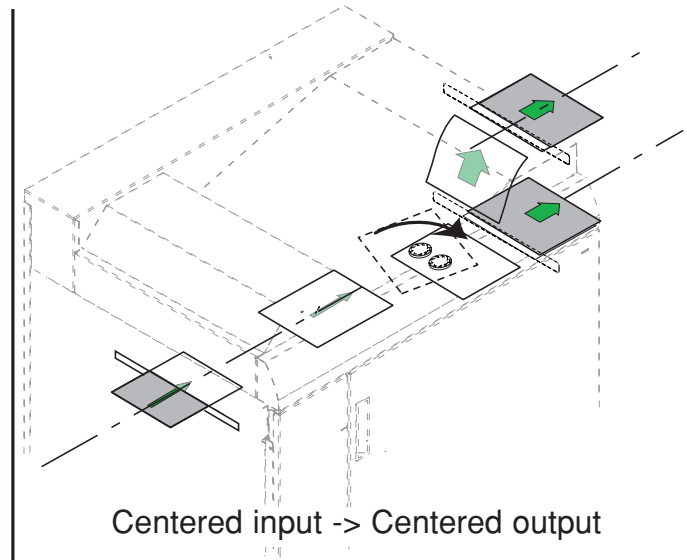
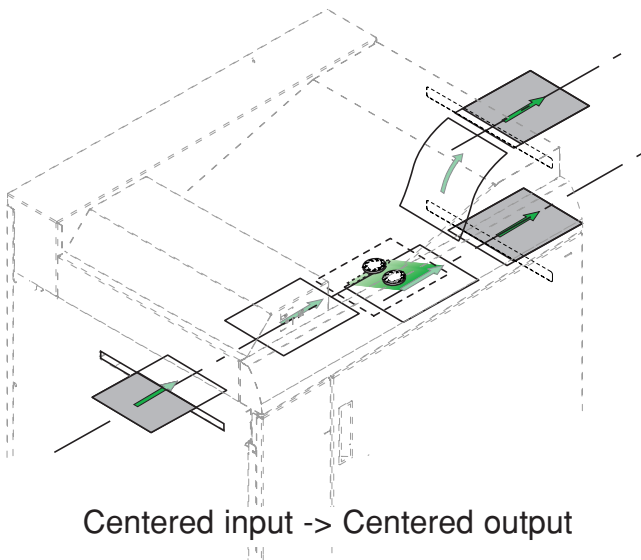
The information contained in this manual is based on the most current information available at the time of editing.

## DESCRIPTION OF THE PROCESS

Schematic view of the paper path.

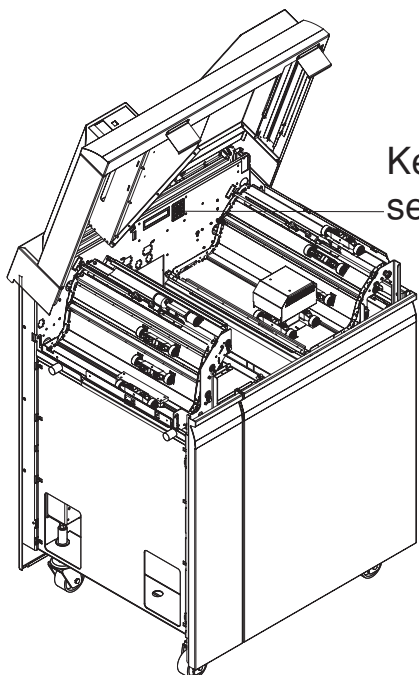
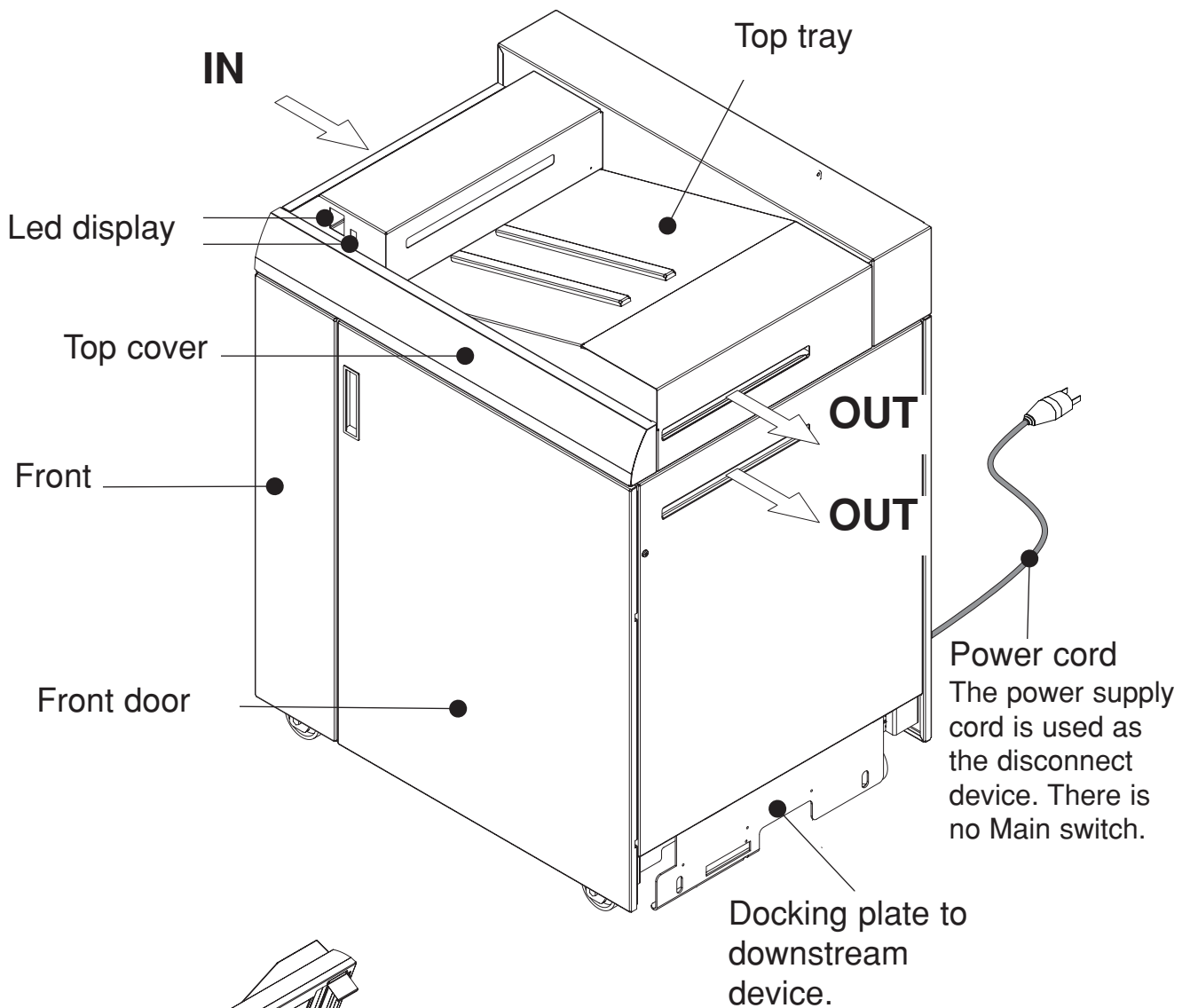
WITHOUT ROTATION

WITH ROTATION



## DESCRIPTION OF THE MACHINE

### 1 - Features description



Keyboard and switch for service use only.

#### **General:**

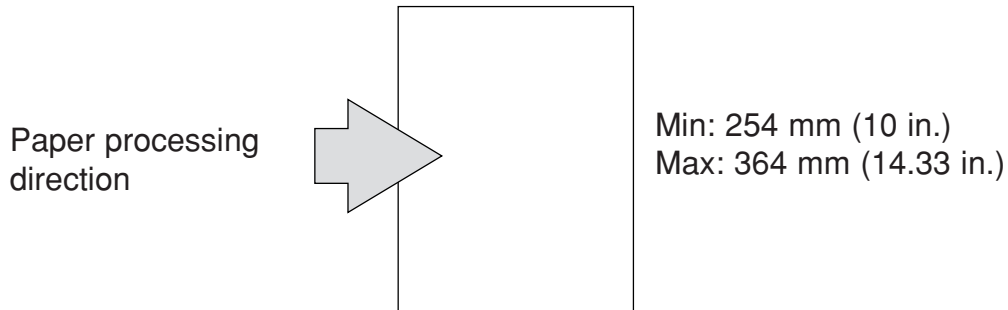
Height of the entrance / exit: 860mm / 33.8in.

Height of the exit : 860 mm (33.8 in.) or 1020mm (40.1 in.)  
(Adjustable : + 60mm / 2.4in. and - 15mm / .6in.).

## 2 - Technical specifications

### Paper type:

Min: 178 mm (7 in.)  
Max: 470 mm (18.5 in.)



### Paper format:

Paper Size / Orientation				
	LEF	SEF	Inches	mm
Envelopes #10 <sup>2</sup> to 9"x12"	X		4.12x9.5 to 9"x12"	105x241 to 229x305
A5	X		(5.83x8.27)	148x210
Statement	X		5.5x8.5	(140x216)
7x10	X		7x10	(178x254)
B5 - JIS	X		(7.17x10.12)	182x257
Executive	X		7.25x10.5	(184x267)
16K (Taiwan) <sup>3</sup>	X		(7.64 x 10.51)	194x267
8x10	X		8x10	(203x254)
8x10		X	8x10	(203x254)
Letter	X		8.5x11	(215/216x279)
Letter		X	8.5x11	(215/216x279)
Ltr Cover	X		9x11	(229x279)
Ltr Cover		X	9x11	(229x279)
Ltr Tab <sup>1</sup>	X		9x11	(229x279)
210x270	X		(8.27x10.63)	210x270
210x270		X	(8.27x10.63)	210x270
A4	X		(8.27x11.69)	210x297
A4		X	(8.27x11.69)	210x297
210x330		X	(8.27x13)	210x330
215x275	X		(8.46x10.83)	215x275
215x275		X	(8.46x10.83)	215x275
215x356		X	(8.46x14.02)	215x356
216x273	X		(8.5x10.7)	216x273
216x273		X	(8.5x10.7)	216x273
A4 Cover	X		(8.78x11.69)	223x297
A4 Cover		X	(8.78x11.69)	223x297
A4 Tab <sup>1</sup>	X		(8.78x11.69)	223x297
Spanish – XE	X		(8.46x12.4)	215x315
Spanish – XE		X	(8.46x12.4)	215x315
8x13		X	8x13	(203x330)



Paper Size / Orientation					PPM
	LEF	SEF	Inches	mm	
215x330		X	(8.46x13)	215x330	72
Foolscap – XE		X	8.5x13	(216x330)	72
220x330		X	(8.66x13)	220x330	72
Legal		X	8.5x14	(216x356)	72
9x14		X	9x14	(229x356)	72
SB4		X	(9.9x14.1)	252x358	72
B4 –JIS		X	(10.12x14.33)	257x364	72
8K (Taiwan) <sup>3</sup>		X	(10.51x15.28)	267x388	72
A3		X	(11.69x16.54)	297x420	72
Ledger		X	(11x17)	(279x432)	72
12x18		X	12x18	(305x457)	48
12x18.5		X	12x18.5	(305x470)	48
12.2x17		X	(12.2x17)	310x432	48
4 up-6x9		X	12.5x18.5	(317.5x470)	48
2 up-6x9	X		12.5x9.5	(317.5x241.3)	96
SRA4					
2 up-A5	X		(12.6x8.9)	320x225	120
SRA3					
4 up-A5		X	(12.6x17.7)	320x450	48
Labels	X	X	See 16.0-3	See 16.0-3	

Notes :

1 Tabs are fed tab trailing.

2 #10 Envelopes enters IOT with flap open, flap trailing and front side facing down.

Paper orientation , excluding Envelopes, encompass both long grain and short grain papers.

Brackets ( ) indicate the equivalent size for informational purposes only.

3 Korea and Taiwan: Actual FX APO market region includes this set of papers and the ESG set of papers.

**Paper capacity :**

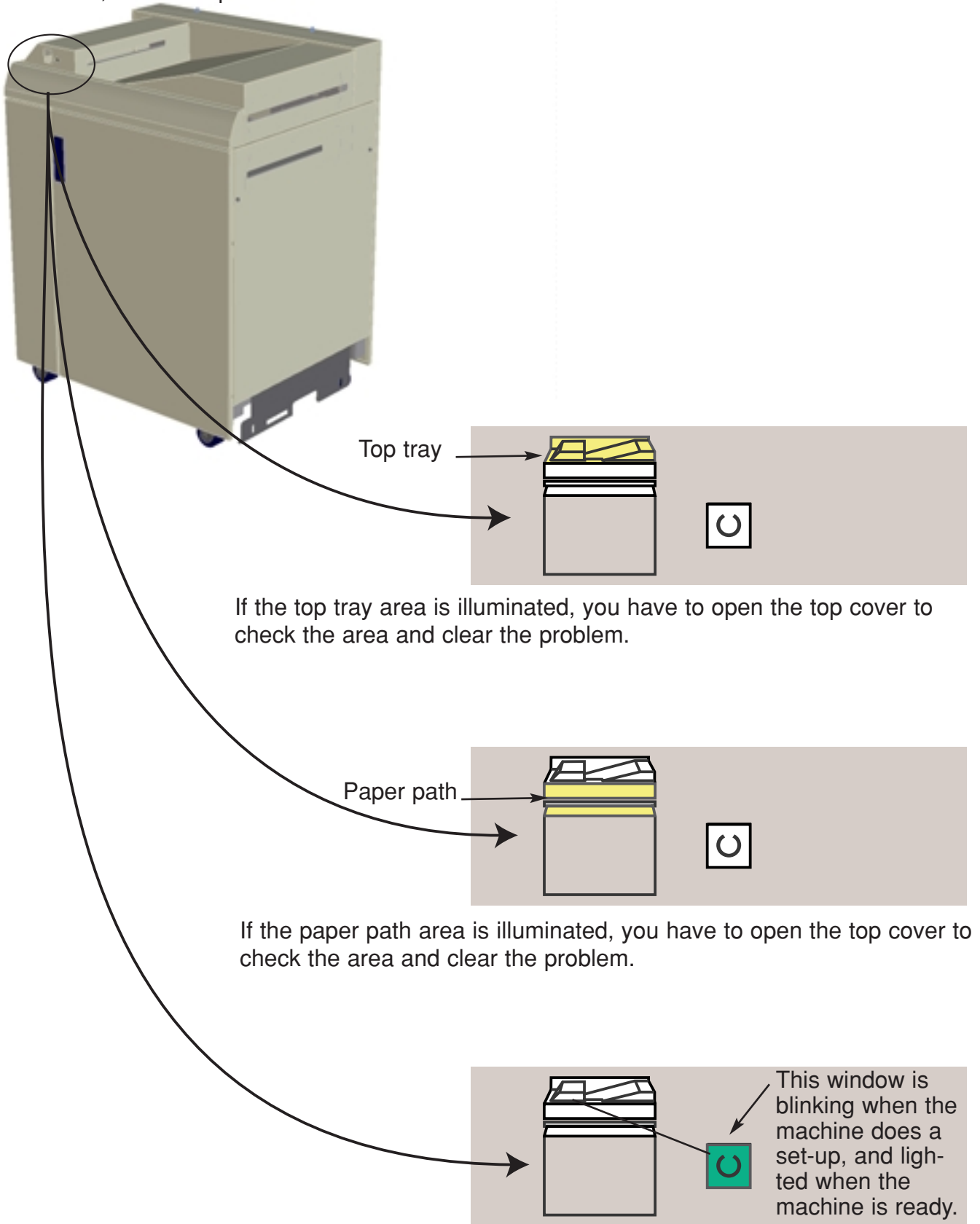
Maximum 465 mm (18.3 in.)

**Input speed :**

DocuTech 120 : up to 216 ppm

## JAM DETECTION

The display represents the top tray and the paper path area. When part of the mimic is illuminated, there is a problem in this area.



## HOW TO PROGRAM A JOB (ROTATION OR REGISTRATION)?

---

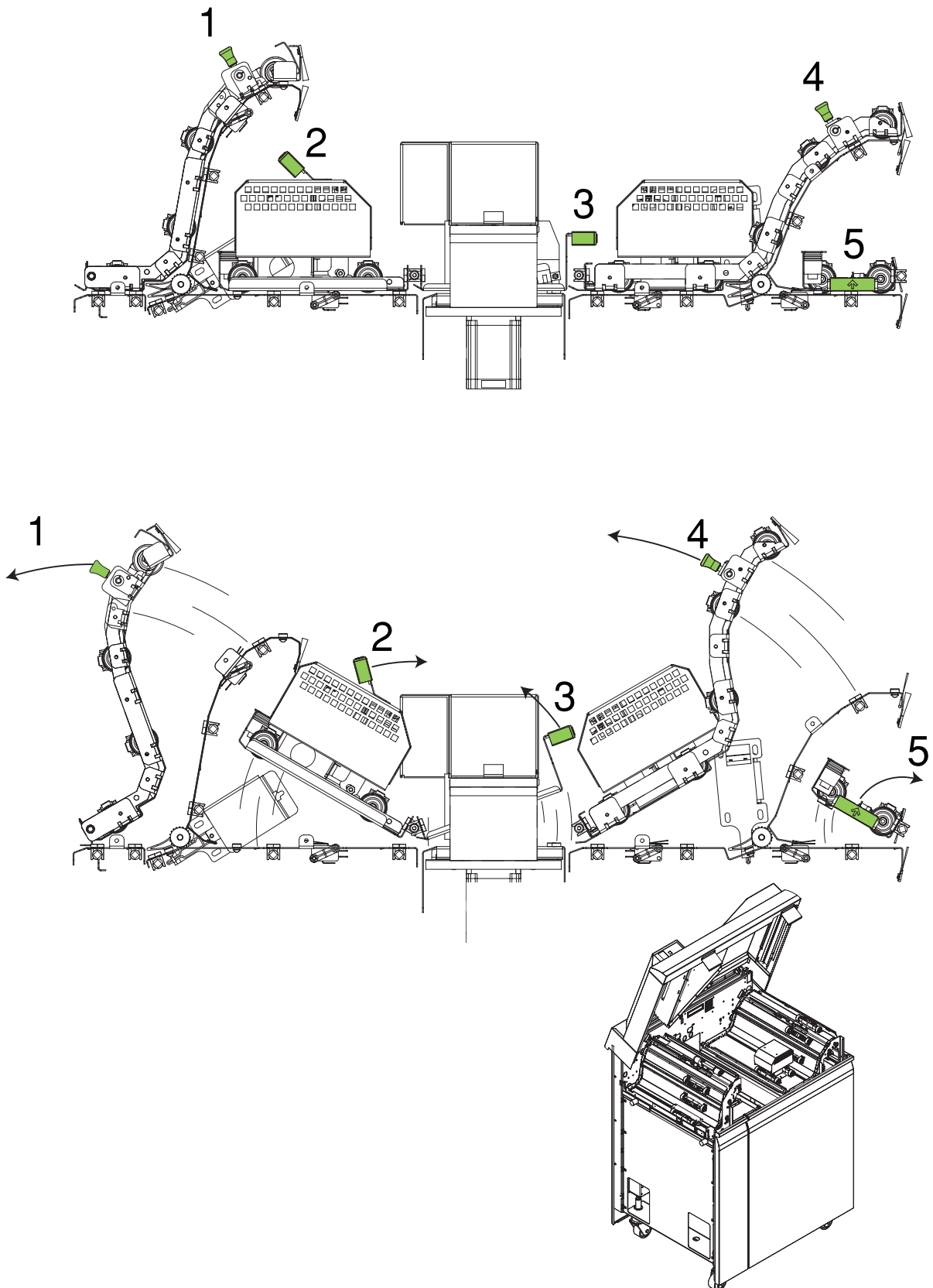
Refer to printer user interface, not available on XIM.

Functions to be programmed:

- Rotation/No rotation.
- Centered or edge registered output.
- Higher or lower exit selection...

# JAM CLEARANCE - JOB RECOVERY

## - Location of the baffles



## TROUBLESHOOTING

---

<b>Problem</b>	<b>Cause</b>	<b>Solution</b>
Green power window not illuminated	No power	<ul style="list-style-type: none"> <li>• Check that the power cord is connected to the wall outlet</li> <li>• Check if printer is ready</li> <li>• Check communication cable from Docutech 120 to XIM for proper connection</li> <li>• Check for other area if the mimic not illuminated</li> <li>• Check the service switch position (see "description of the machine" chapter)</li> </ul>
Poor registration		
Paper Jams	High paper curl	<ul style="list-style-type: none"> <li>• Adjust printer decurler</li> <li>• Flip paper in printer paper tray</li> </ul>
	Mechanical obstruction	<ul style="list-style-type: none"> <li>• Check for obstruction in the stacker paper path</li> <li>• Ensure that all transports and baffles are properly seated</li> </ul>
	High paper curl	<ul style="list-style-type: none"> <li>• Adjust printer decurler</li> <li>• Flip paper in printer paper tray(s)</li> <li>• Switch to heavier weight paper</li> </ul>
	Dirty sensors	<ul style="list-style-type: none"> <li>• Clean sensors with cotton swab</li> </ul>

This page is intentionally left blank.